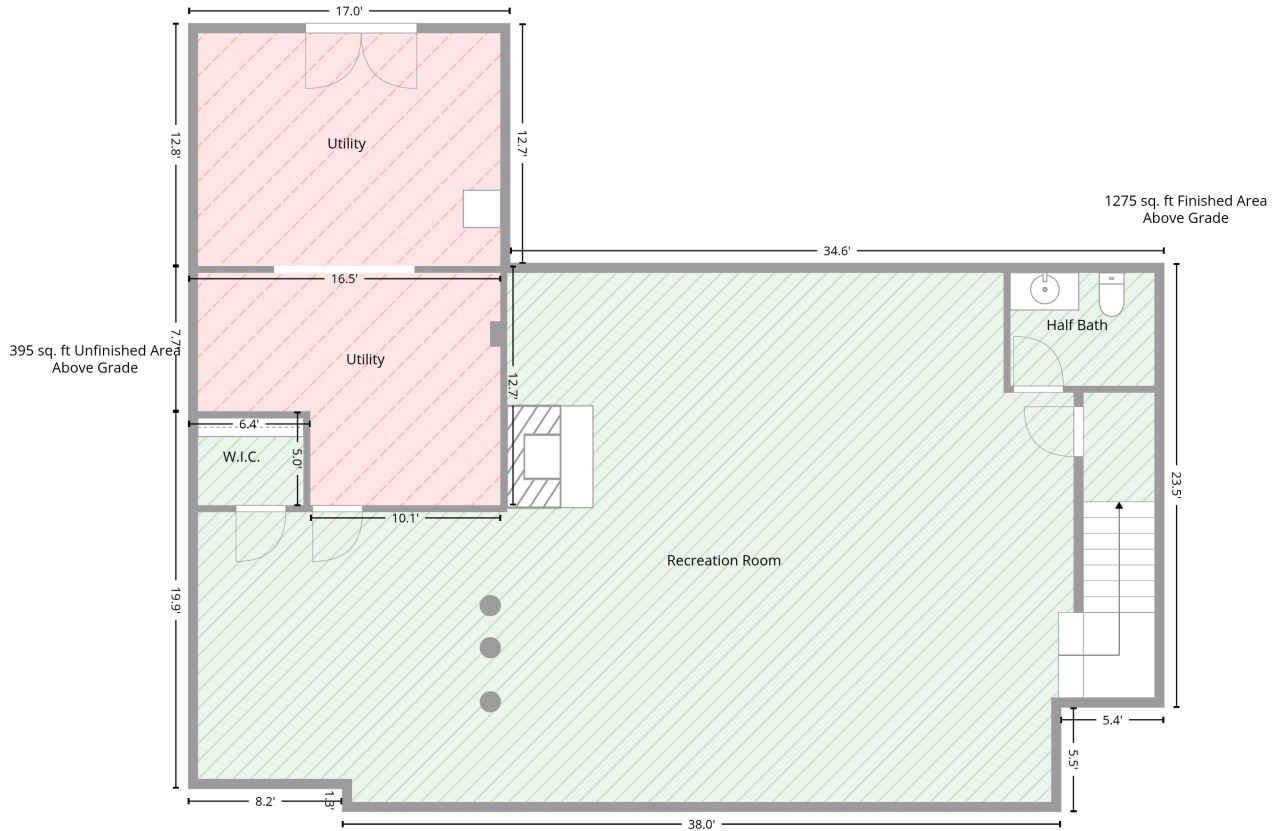


139 Morning Dove Lane, Statesville, North Carolina, United States

Total area: 4284 sq. ft
Gross living area: 3821 sq. ft

Finished area: 3821 sq. ft
Non-standard finished area: 0 sq. ft

Level 1



Total area: 1670 sq. ft
Gross living area: 1275 sq. ft

Finished area: 1275 sq. ft
Non-standard finished area: 0 sq. ft

Space	Area (sq. ft)	Calculation <small>Coordinate Polygon Area Algorithm using inches</small>
Finished Area • Living area • Finished Area	1275	$-\left((649.3 + 649.3) * (193.8 - 475.3) + (649.3 + 583.9) * (475.3 - 475.3) + (583.9 + 583.9) * (475.3 - 541.5) + (583.9 + 128.3) * (541.5 - 541.5) + (128.3 + 128.3) * (541.5 - 526.9) + (128.3 + 30.6) * (526.9 - 526.9) + (30.6 + 30.6) * (526.9 - 287.9) + (30.6 + 107.8) * (287.9 - 287.9) + (107.8 + 107.8) * (287.9 - 347.4) + (107.8 + 228.6) * (347.4 - 347.4) + (228.6 + 228.6) * (347.4 - 195.8) + (228.6 + 234.6) * (195.8 - 193.8) + (234.6 + 649.3) * (193.8 - 193.8)\right) * 0.5 * 0.00694$
UTILITY • Non-living area • Unfinished Area	177	$-\left((228.6 + 228.6) * (195.8 - 347.4) + (228.6 + 107.8) * (347.4 - 347.4) + (107.8 + 107.8) * (347.4 - 287.9) + (107.8 + 30.6) * (287.9 - 287.9) + (30.6 + 30.6) * (287.9 - 195.8) + (30.6 + 228.6) * (195.8 - 195.8)\right) * 0.5 * 0.00694$
UTILITY • Non-living area • Unfinished Area	218	$-\left((234.6 + 234.6) * (41.8 - 193.8) + (234.6 + 228.6) * (193.8 - 195.8) + (228.6 + 30.6) * (195.8 - 195.8) + (30.6 + 30.6) * (195.8 - 41.8) + (30.6 + 234.6) * (41.8 - 41.8)\right) * 0.5 * 0.00694$

139 Morning Dove Lane, Statesville, North Carolina, United States

Total area: 4284 sq. ft
Gross living area: 3821 sq. ft

Finished area: 3821 sq. ft
Non-standard finished area: 0 sq. ft

Level 2



Total area: 2614 sq. ft
Gross living area: 2546 sq. ft

Finished area: 2546 sq. ft
Non-standard finished area: 0 sq. ft

Space	Area (sq. ft)	Calculation
Finished Area	2546	Coordinate Polygon Area Algorithm using inches
<ul style="list-style-type: none"> Living area Finished Area 		$ \begin{aligned} & -((938.6 + 938.6) * (-3.6 - 239.4) + (938.6 + 932.6) * (239.4 - 239.4) + (932.6 + 932.6) * (239.4 - 245.4) \\ & + (932.6 + 789.4) * (245.4 - 245.4) + (789.4 + 789.4) * (245.4 - 277.7) + (789.4 + 649.3) * \\ & (277.7 - 277.7) + (649.3 + 649.3) * (277.7 - 399) + (649.3 + 598) * (399 - 399) + (598 + 598) * \\ & (399 - 625.7) + (598 + 443.6) * (625.7 - 625.7) + (443.6 + 443.6) * (625.7 - 541.5) + (443.6 + \\ & 283.1) * (541.5 - 541.5) + (283.1 + 283.1) * (541.5 - 725.3) + (283.1 + 128.3) * (725.3 - 725.3) + \\ & (128.3 + 128.3) * (725.3 - 526.9) + (128.3 + 30.6) * (526.9 - 526.9) + (30.6 + 30.6) * (526.9 - 41.8) \\ & + (30.6 + 234.6) * (41.8 - 41.8) + (234.6 + 234.6) * (41.8 - 193.8) + (234.6 + 592) * (193.8 - 193.8) \\ & + (592 + 592) * (193.8 - -3.6) + (592 + 938.6) * (-3.6 - -3.6) * 0.5 * 0.00694 \end{aligned} $

139 Morning Dove Lane, Statesville, North Carolina, United States

Total area: 4284 sq. ft
Gross living area: 3821 sq. ft

Finished area: 3821 sq. ft
Non-standard finished area: 0 sq. ft

Level 2

Space	Area (sq. ft)	Calculation <small>Coordinate Polygon Area Algorithm using inches</small>
PORCH • Non-living area • Unfinished Area	62	$-((443.6 + 443.6) * (541.5 - 596.6) + (443.6 + 283.1) * (596.6 - 597.2) + (283.1 + 283.1) * (597.2 - 541.5) + (283.1 + 443.6) * (541.5 - 541.5)) * 0.5 * 0.00694$
DECK • Non-living area • Unfinished Area	357	$-((569.4 + 569.4) * (-24 - 53.4) + (569.4 + 592) * (53.4 - 53.4) + (592 + 592) * (53.4 - 193.8) + (592 + 585.1) * (193.8 - 193.8) + (585.1 + 554) * (193.8 - 172.7) + (554 + 493.8) * (172.7 - 172.7) + (493.8 + 462.6) * (172.7 - 193.8) + (462.6 + 234.6) * (193.8 - 193.8) + (234.6 + 234.6) * (193.8 - 53.4) + (234.6 + 528.1) * (53.4 - 53.4) + (528.1 + 528.1) * (53.4 - -24) + (528.1 + 569.4) * (-24 - -24)) * 0.5 * 0.00694$
STORAGE • Non-living area • Unfinished Area	68	$-((649.3 + 649.3) * (399 - 589.9) + (649.3 + 598) * (589.9 - 589.9) + (598 + 598) * (589.9 - 399) + (598 + 649.3) * (399 - 399)) * 0.5 * 0.00694$
GARAGE • Attached Garage	539	$-((932.6 + 932.6) * (245.4 - 535.5) + (932.6 + 649.3) * (535.5 - 535.5) + (649.3 + 649.3) * (535.5 - 277.7) + (649.3 + 789.4) * (277.7 - 277.7) + (789.4 + 789.4) * (277.7 - 245.4) + (789.4 + 932.6) * (245.4 - 245.4)) * 0.5 * 0.00694$

139 Morning Dove Lane, Statesville, North Carolina, United States

Total area: 4284 sq. ft
Gross living area: 3821 sq. ft

Finished area: 3821 sq. ft
Non-standard finished area: 0 sq. ft

Property UPD

Data	Value
Structure	1
Unit	1
Level Number	1
Below Grade	false
Level Low Ceiling	false
ADU Indicator	false
Total Area	1670
Finished Area	1275
Non-Standard Finished Area	0
Structure	1
Unit	1
Level Number	2
Below Grade	false
Level Low Ceiling	false
ADU Indicator	false
Total Area	2614
Finished Area	2546
Non-Standard Finished Area	0