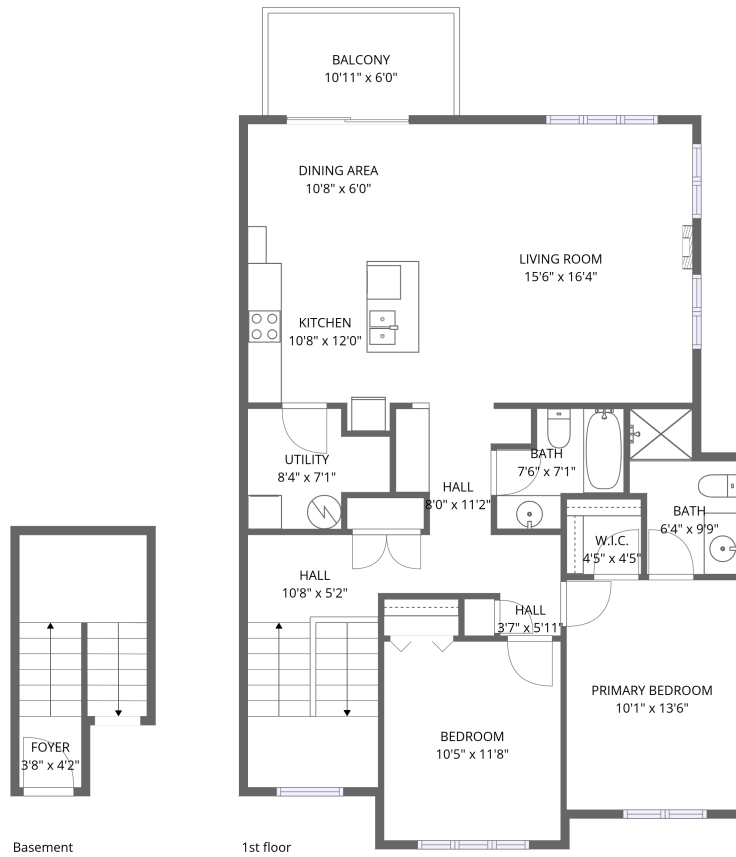


Home data report

1015 Beryl Private, B, Gloucester, Ontario, Canada, B




Total Area: 1211 sq. ft

Basement: 95 sq. ft, 1st Floor: 1116 sq. ft

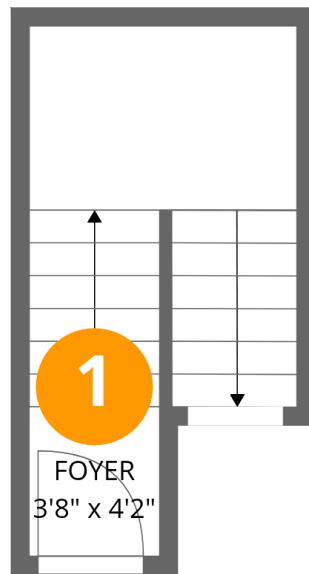
Excluded: Balcony 66 sq. ft, Walls: 0 sq. ft

Property summary

 **2** Floors

 **2** Bedrooms

 **2** Bathrooms



Room dimensions

Floor 1 Below grade

Total:95sqft

Excluded: 0sqft

#		Dimensions	sqft	Counted as living area
1	Foyer	3'8" x 4'2"	15 sq. ft	Yes

1015 Beryl Private, B, Gloucester, Ontario, Canada, B



Room dimensions

Floor 2

Total: 1116 sqft Excluded: 66 sqft

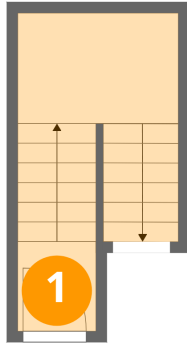
#		Dimensions	sqft	Counted as living area
2	Living Room	15'6" x 16'4"	253 sq. ft	Yes
3	Primary Bedroom	10'1" x 13'6"	136 sq. ft	Yes
4	Bedroom	10'5" x 11'8"	122 sq. ft	Yes
5	Dining Area	10'8" x 6'0"	64 sq. ft	Yes
6	Hall	8'0" x 11'2"	89 sq. ft	Yes
7	Hall	3'7" x 5'11"	21 sq. ft	Yes
8	W.I.C.	4'5" x 4'5"	19 sq. ft	Yes
9	Bath	7'6" x 7'1"	53 sq. ft	Yes
10	Kitchen	10'8" x 12'0"	128 sq. ft	Yes
11	Bath	6'4" x 9'9"	62 sq. ft	Yes
12	Utility	8'4" x 7'1"	59 sq. ft	Yes

Home data report

1015 Beryl Private,B,Gloucester,Ontario,Canada, B

#		Dimensions	sqft	Counted as living area
13	Hall	10'8" x 5'2"	55 sq. ft	Yes
14	Balcony	10'11" x 6'0"	65 sq. ft	No

1 Floor 1 - Foyer



Dimensions: 3'8" x 4'2"
Area: 15 sq. ft
Counted as living area: Yes

Heated: Yes
Finished: Yes
Enclosed: Yes
Contiguous: Yes
Permitted: Yes
Wet space: No
Addition: No
Conversion: No

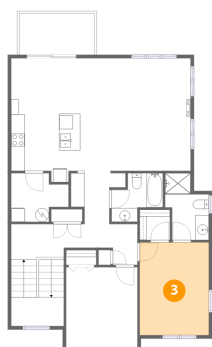
2 Floor 2 - Living Room



Dimensions: 15'6" x 16'4"
Area: 253 sq. ft
Counted as living area: Yes

Heated: Yes
Finished: Yes
Enclosed: Yes
Contiguous: Yes
Permitted: Yes
Wet space: No
Addition: No
Conversion: No

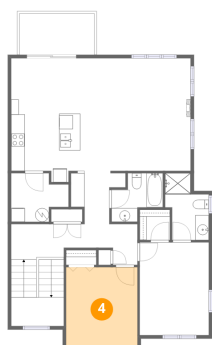
3 Floor 2 - Primary Bedroom



Dimensions: 10'1" x 13'6"
Area: 136 sq. ft
Counted as living area: Yes

Heated: Yes
Finished: Yes
Enclosed: Yes
Contiguous: Yes
Permitted: Yes
Wet space: No
Addition: No
Conversion: No

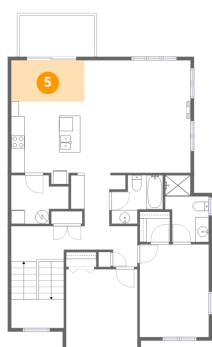
4 Floor 2 - Bedroom



Dimensions: 10'5" x 11'8"
Area: 122 sq. ft
Counted as living area: Yes

Heated: Yes
Finished: Yes
Enclosed: Yes
Contiguous: Yes
Permitted: Yes
Wet space: No
Addition: No
Conversion: No

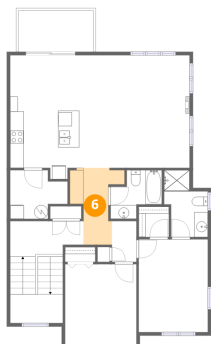
5 Floor 2 - Dining Area



Dimensions: 10'8" x 6'0"
Area: 64 sq. ft
Counted as living area: Yes

Heated: Yes
Finished: Yes
Enclosed: Yes
Contiguous: Yes
Permitted: Yes
Wet space: No
Addition: No
Conversion: No

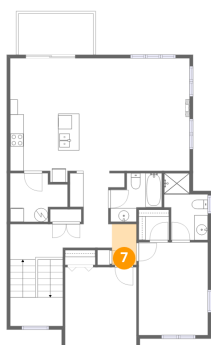
6 Floor 2 - Hall



Dimensions: 8'0" x 11'2"
Area: 89 sq. ft
Counted as living area: Yes

Heated: Yes
Finished: Yes
Enclosed: Yes
Contiguous: Yes
Permitted: Yes
Wet space: No
Addition: No
Conversion: No

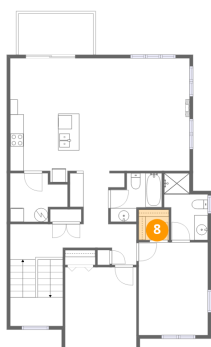
7 Floor 2 - Hall



Dimensions: 3'7" x 5'11"
Area: 21 sq. ft
Counted as living area: Yes

Heated: Yes
Finished: Yes
Enclosed: Yes
Contiguous: Yes
Permitted: Yes
Wet space: No
Addition: No
Conversion: No

8 Floor 2 - W.I.C.



Dimensions: 4'5" x 4'5"
Area: 19 sq. ft
Counted as living area: Yes

Heated: Yes
Finished: Yes
Enclosed: Yes
Contiguous: Yes
Permitted: Yes
Wet space: No
Addition: No
Conversion: No

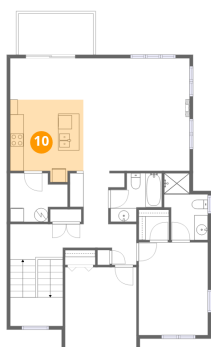
9 Floor 2 - Bath



Dimensions: 7'6" x 7'1"
Area: 53 sq. ft
Counted as living area: Yes

Heated: Yes
Finished: Yes
Enclosed: Yes
Contiguous: Yes
Permitted: Yes
Wet space: Yes
Addition: No
Conversion: No

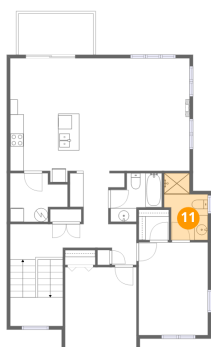
10 Floor 2 - Kitchen



Dimensions: 10'8" x 12'0"
Area: 128 sq. ft
Counted as living area: Yes

Heated: Yes
Finished: Yes
Enclosed: Yes
Contiguous: Yes
Permitted: Yes
Wet space: No
Addition: No
Conversion: No

11 Floor 2 - Bath



Dimensions: 6'4" x 9'9"
Area: 62 sq. ft
Counted as living area: Yes

Heated: Yes
Finished: Yes
Enclosed: Yes
Contiguous: Yes
Permitted: Yes
Wet space: Yes
Addition: No
Conversion: No

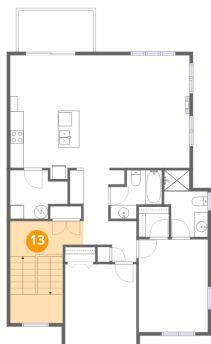
12 Floor 2 - Utility



Dimensions: 8'4" x 7'1"
Area: 59 sq. ft
Counted as living area: Yes

Heated: Yes
Finished: Yes
Enclosed: Yes
Contiguous: Yes
Permitted: Yes
Wet space: No
Addition: No
Conversion: No

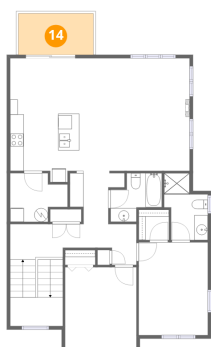
13 Floor 2 - Hall



Dimensions: 10'8" x 5'2"
Area: 55 sq. ft
Counted as living area: Yes

Heated: Yes
Finished: Yes
Enclosed: Yes
Contiguous: Yes
Permitted: Yes
Wet space: No
Addition: No
Conversion: No

14 Floor 2 - Balcony



Dimensions: 10'11" x 6'0"
Area: 65 sq. ft
Counted as living area: No

Heated: No
Finished: No
Enclosed: No
Contiguous: Yes
Permitted: Yes
Wet space: No
Addition: No
Conversion: No