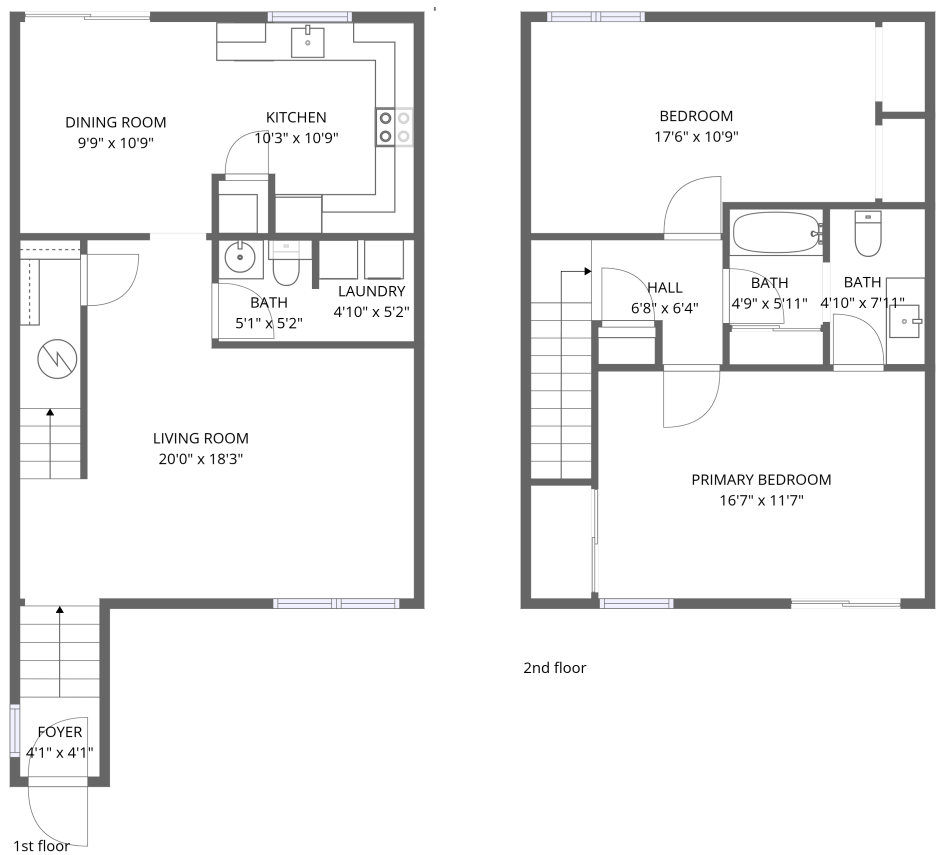


Home data report

23 Colonial Drive, East Merrimack, Merrimack, Hillsborough County, New Hampshire, United States, 03054



Total Area: 1212 sq. ft

1st Floor: 624 sq. ft, 2nd Floor: 588 sq. ft

Excluded: Walls: 94 sq. ft

Property summary

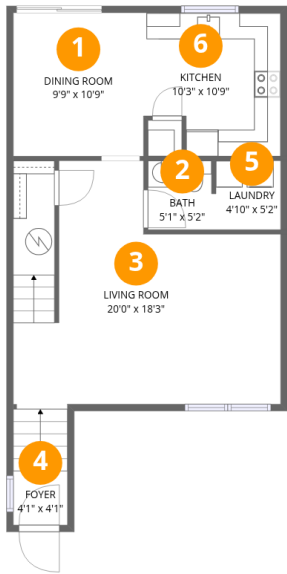
 **2** Floors

 **2** Bedrooms

 **1** Bathrooms

 **1** Half baths

23 Colonial Drive, East Merrimack, Merrimack, Hillsborough County, New Hampshire, United States, 03054

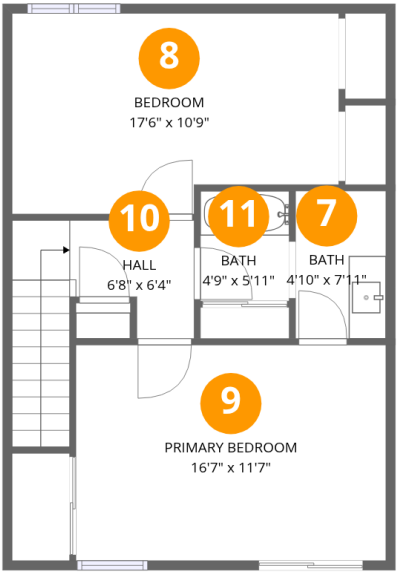


Room dimensions

Floor 1 Total:624sqft   Excluded: 0sqft

#		Dimensions	sqft	Counted as living area
1	Dining Room	9'9" x 10'9"	105 sq. ft	Yes
2	Bath	5'1" x 5'2"	26 sq. ft	Yes
3	Living Room	20'0" x 18'3"	305 sq. ft	Yes
4	Foyer	4'1" x 4'1"	37 sq. ft	Yes
5	Laundry	4'10" x 5'2"	25 sq. ft	Yes
6	Kitchen	10'3" x 10'9"	101 sq. ft	Yes

23 Colonial Drive, East Merrimack, Merrimack, Hillsborough County, New Hampshire, United States, 03054



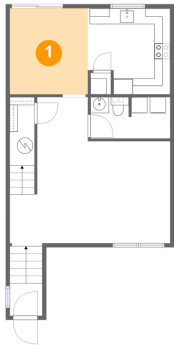
Room dimensions

Floor 2 Total:588sqft Excluded: 0sqft

#		Dimensions	sqft	Counted as living area
7	Bath	4'10" x 7'11"	38 sq. ft	Yes
8	Bedroom	17'6" x 10'9"	176 sq. ft	Yes
9	Primary Bedroom	16'7" x 11'7"	192 sq. ft	Yes
10	Hall	6'8" x 6'4"	72 sq. ft	Yes
11	Bath	4'9" x 5'11"	28 sq. ft	Yes

23 Colonial Drive, East Merrimack, Merrimack, Hillsborough  
County, New Hampshire, United States, 03054

1 Floor 1 - Dining Room



Dimensions: 9'9" x 10'9"  
Area: 105 sq. ft  
Counted as living area: Yes

Heated: Yes  
Finished: Yes  
Enclosed: Yes  
Contiguous: Yes  
Permitted: Yes  
Wet space: No  
Addition: No  
Conversion: No

2 Floor 1 - Bath



Dimensions: 5'1" x 5'2"  
Area: 26 sq. ft  
Counted as living area: Yes

Heated: Yes  
Finished: Yes  
Enclosed: Yes  
Contiguous: Yes  
Permitted: Yes  
Wet space: Yes  
Addition: No  
Conversion: No

23 Colonial Drive, East Merrimack, Merrimack, Hillsborough  
County, New Hampshire, United States, 03054

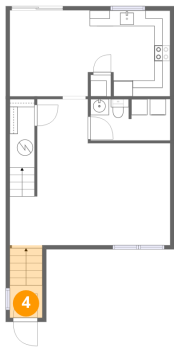
3 Floor 1 - Living Room



Dimensions: 20'0" x 18'3"  
Area: 305 sq. ft  
Counted as living area: Yes

Heated: Yes  
Finished: Yes  
Enclosed: Yes  
Contiguous: Yes  
Permitted: Yes  
Wet space: No  
Addition: No  
Conversion: No

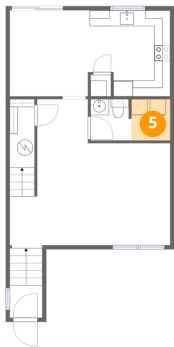
4 Floor 1 - Foyer



Dimensions: 4'1" x 4'1"  
Area: 37 sq. ft  
Counted as living area: Yes

Heated: Yes  
Finished: Yes  
Enclosed: Yes  
Contiguous: Yes  
Permitted: Yes  
Wet space: No  
Addition: No  
Conversion: No

5 Floor 1 - Laundry

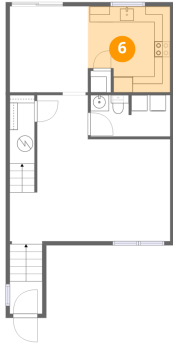


Dimensions: 4'10" x 5'2"  
Area: 25 sq. ft  
Counted as living area: Yes

Heated: Yes  
Finished: Yes  
Enclosed: Yes  
Contiguous: Yes  
Permitted: Yes  
Wet space: No  
Addition: No  
Conversion: No

23 Colonial Drive, East Merrimack, Merrimack, Hillsborough  
County, New Hampshire, United States, 03054

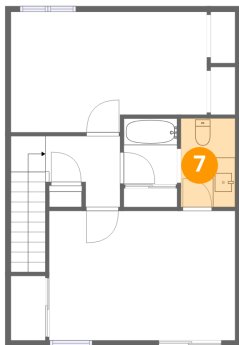
## 6 Floor 1 - Kitchen



Dimensions: 10'3" x 10'9"  
Area: 101 sq. ft  
Counted as living area: Yes

Heated: Yes  
Finished: Yes  
Enclosed: Yes  
Contiguous: Yes  
Permitted: Yes  
Wet space: No  
Addition: No  
Conversion: No

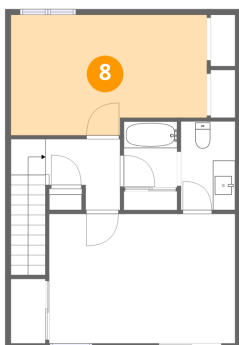
## 7 Floor 2 - Bath



Dimensions: 4'10" x 7'11"  
Area: 38 sq. ft  
Counted as living area: Yes

Heated: Yes  
Finished: Yes  
Enclosed: Yes  
Contiguous: Yes  
Permitted: Yes  
Wet space: No  
Addition: No  
Conversion: No

## 8 Floor 2 - Bedroom

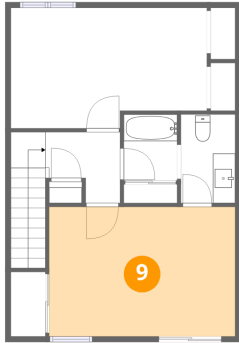


Dimensions: 17'6" x 10'9"  
Area: 176 sq. ft  
Counted as living area: Yes

Heated: Yes  
Finished: Yes  
Enclosed: Yes  
Contiguous: Yes  
Permitted: Yes  
Wet space: No  
Addition: No  
Conversion: No

23 Colonial Drive, East Merrimack, Merrimack, Hillsborough  
County, New Hampshire, United States, 03054

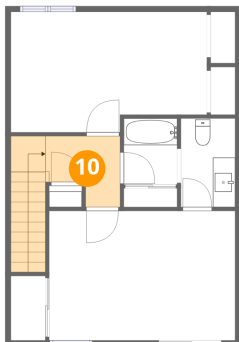
## 9 Floor 2 - Primary Bedroom



Dimensions: 16'7" x 11'7"  
Area: 192 sq. ft  
Counted as living area: Yes

Heated: Yes  
Finished: Yes  
Enclosed: Yes  
Contiguous: Yes  
Permitted: Yes  
Wet space: No  
Addition: No  
Conversion: No

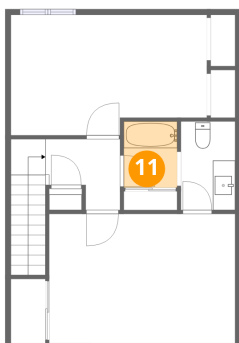
## 10 Floor 2 - Hall



Dimensions: 6'8" x 6'4"  
Area: 72 sq. ft  
Counted as living area: Yes

Heated: Yes  
Finished: Yes  
Enclosed: Yes  
Contiguous: Yes  
Permitted: Yes  
Wet space: No  
Addition: No  
Conversion: No

## 11 Floor 2 - Bath



Dimensions: 4'9" x 5'11"  
Area: 28 sq. ft  
Counted as living area: Yes

Heated: Yes  
Finished: Yes  
Enclosed: Yes  
Contiguous: Yes  
Permitted: Yes  
Wet space: Yes  
Addition: No  
Conversion: No