

Home data report

623 Marco Rd, Apollo, PA, US



Total Area: 1595 sq. ft

Basement: 0 sq. ft, 1st Floor: 1067 sq. ft, 2nd Floor: 528 sq. ft

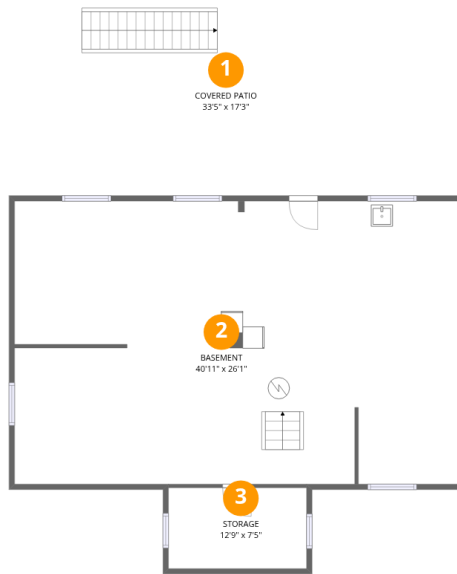
Excluded: Storage 99 sq. ft, Basement 1067 sq. ft, Covered patio 577 sq. ft, Porch 116 sq. ft, Deck 414 sq. ft, Low ceiling 33 sq. ft, Walls: 208 sq. ft

Property summary

 **3** Floors

 **2** Bedrooms

 **2** Bathrooms



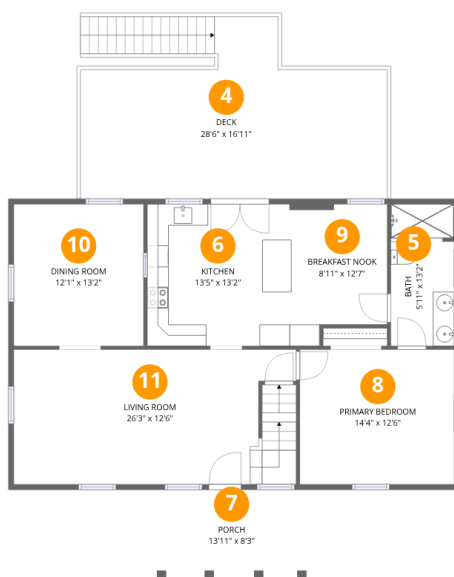
Room dimensions

Floor 1 Below grade

Total:0sqft

Excluded: 1743sqft

#		Dimensions	sqft	Counted as living area
1	Covered Patio	33'5" x 17'3"	577 sq. ft	No
2	Basement	40'11" x 26'1"	1061 sq. ft	No
3	Storage	12'9" x 7'5"	95 sq. ft	No



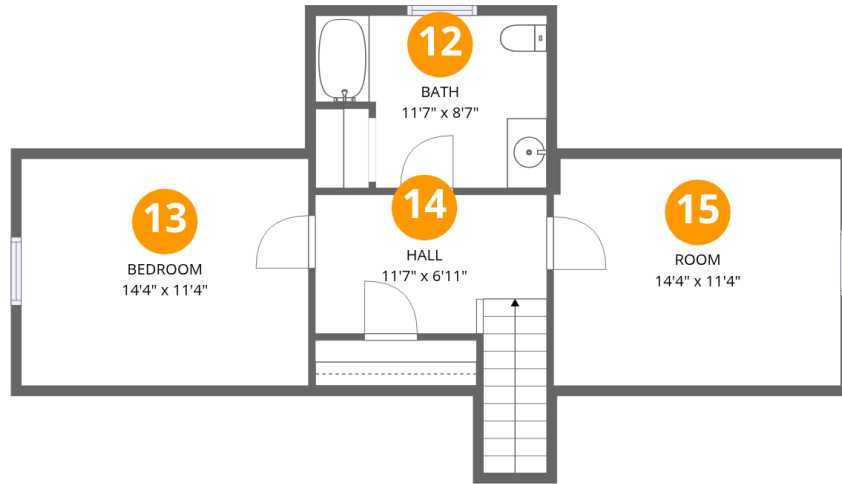
Room dimensions

Floor 2

Total: 1067sqft

Excluded: 530sqft

#		Dimensions	sqft	Counted as living area
4	Deck	28'6" x 16'11"	414 sq. ft	No
5	Bath	5'11" x 13'2"	77 sq. ft	Yes
6	Kitchen	13'5" x 13'2"	177 sq. ft	Yes
7	Porch	13'11" x 8'3"	116 sq. ft	No
8	Primary Bedroom	14'4" x 12'6"	180 sq. ft	Yes
9	Breakfast Nook	8'11" x 12'7"	105 sq. ft	Yes
10	Dining Room	12'1" x 13'2"	159 sq. ft	Yes
11	Living Room	26'3" x 12'6"	326 sq. ft	Yes



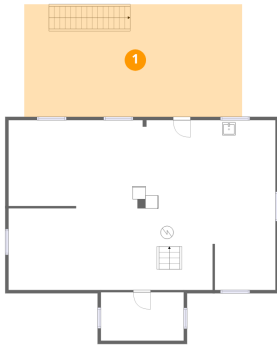
Room dimensions

Floor 3

Total:528sqft Excluded: 33sqft

#		Dimensions	sqft	Counted as living area
12	Bath	11'7" x 8'7"	87 sq. ft	Yes
13	Bedroom	14'4" x 11'4"	141 sq. ft	Yes
14	Hall	11'7" x 6'11"	102 sq. ft	Yes
15	Room	14'4" x 11'4"	152 sq. ft	Yes

1 Floor 1 - Covered Patio



Dimensions: 33'5" x 17'3"
Area: 577 sq. ft
Counted as living area: No

Heated: No
Finished: No
Enclosed: No
Contiguous: Yes
Permitted: Yes
Wet space: No
Addition: No
Conversion: No

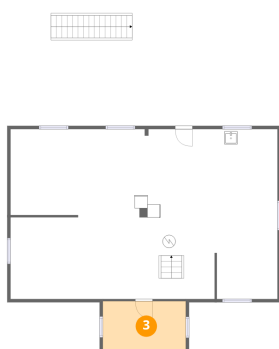
2 Floor 1 - Basement



Dimensions: 40'11" x 26'1"
Area: 1061 sq. ft
Counted as living area: No

Heated: Yes
Finished: No
Enclosed: Yes
Contiguous: Yes
Permitted: Yes
Wet space: No
Addition: No
Conversion: No

3 Floor 1 - Storage



Dimensions: 12'9" x 7'5"
Area: 95 sq. ft
Counted as living area: No

Heated: No
Finished: No
Enclosed: No
Contiguous: Yes
Permitted: Yes
Wet space: No
Addition: No
Conversion: No

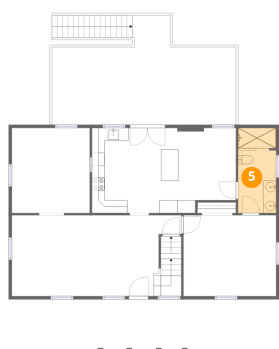
4 Floor 2 - Deck



Dimensions: 28'6" x 16'11"
Area: 414 sq. ft
Counted as living area: No

Heated: No
Finished: No
Enclosed: No
Contiguous: Yes
Permitted: Yes
Wet space: No
Addition: No
Conversion: No

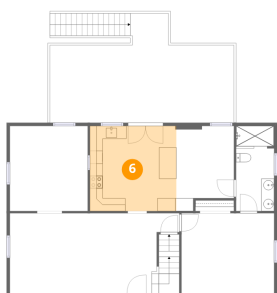
5 Floor 2 - Bath



Dimensions: 5'11" x 13'2"
Area: 77 sq. ft
Counted as living area: Yes

Heated: Yes
Finished: Yes
Enclosed: Yes
Contiguous: Yes
Permitted: Yes
Wet space: Yes
Addition: No
Conversion: No

6 Floor 2 - Kitchen



.....

Dimensions: 13'5" x 13'2"
Area: 177 sq. ft
Counted as living area: Yes

Heated: Yes
Finished: Yes
Enclosed: Yes
Contiguous: Yes
Permitted: Yes
Wet space: No
Addition: No
Conversion: No

7 Floor 2 - Porch

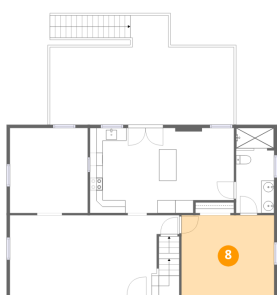


.....

Dimensions: 13'11" x 8'3"
Area: 116 sq. ft
Counted as living area: No

Heated: No
Finished: No
Enclosed: No
Contiguous: Yes
Permitted: Yes
Wet space: No
Addition: No
Conversion: No

8 Floor 2 - Primary Bedroom

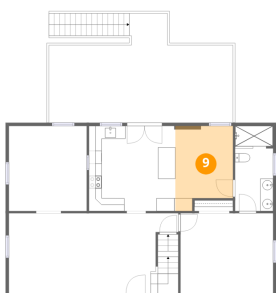


.....

Dimensions: 14'4" x 12'6"
Area: 180 sq. ft
Counted as living area: Yes

Heated: Yes
Finished: Yes
Enclosed: Yes
Contiguous: Yes
Permitted: Yes
Wet space: No
Addition: No
Conversion: No

9 Floor 2 - Breakfast Nook



.....

Dimensions: 8'11" x 12'7"
Area: 105 sq. ft
Counted as living area: Yes

Heated: Yes
Finished: Yes
Enclosed: Yes
Contiguous: Yes
Permitted: Yes
Wet space: No
Addition: No
Conversion: No

10 Floor 2 - Dining Room



.....

Dimensions: 12'1" x 13'2"
Area: 159 sq. ft
Counted as living area: Yes

Heated: Yes
Finished: Yes
Enclosed: Yes
Contiguous: Yes
Permitted: Yes
Wet space: No
Addition: No
Conversion: No

11 Floor 2 - Living Room

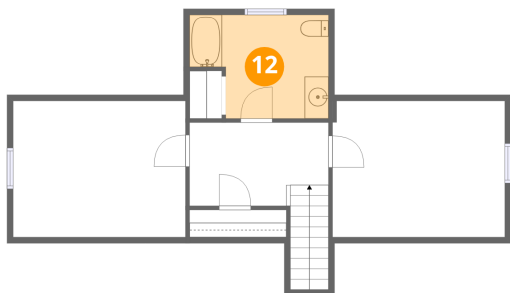


.....

Dimensions: 26'3" x 12'6"
Area: 326 sq. ft
Counted as living area: Yes

Heated: Yes
Finished: Yes
Enclosed: Yes
Contiguous: Yes
Permitted: Yes
Wet space: No
Addition: No
Conversion: No

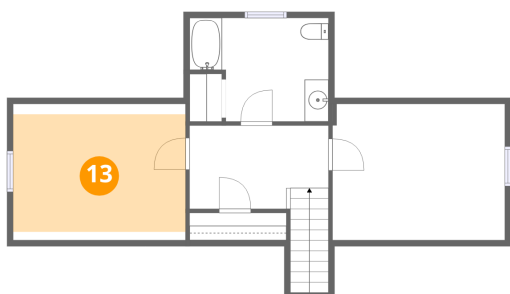
12 Floor 3 - Bath



Dimensions: 11'7" x 8'7"
Area: 87 sq. ft
Counted as living area: Yes

Heated: Yes
Finished: Yes
Enclosed: Yes
Contiguous: Yes
Permitted: Yes
Wet space: Yes
Addition: No
Conversion: No

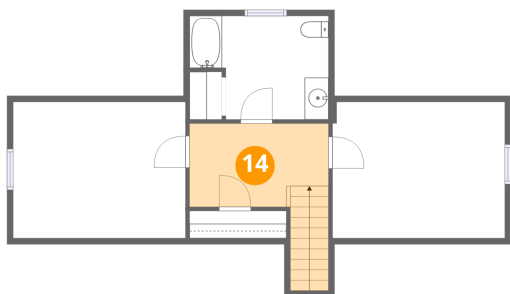
13 Floor 3 - Bedroom



Dimensions: 14'4" x 11'4"
Area: 141 sq. ft
Counted as living area: Yes

Heated: Yes
Finished: Yes
Enclosed: Yes
Contiguous: Yes
Permitted: Yes
Wet space: No
Addition: No
Conversion: No

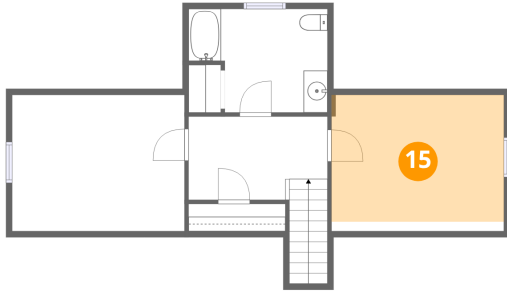
14 Floor 3 - Hall



Dimensions: 11'7" x 6'11"
Area: 102 sq. ft
Counted as living area: Yes

Heated: Yes
Finished: Yes
Enclosed: Yes
Contiguous: Yes
Permitted: Yes
Wet space: No
Addition: No
Conversion: No

15 Floor 3 - Room



Dimensions: 14'4" x 11'4"
Area: 152 sq. ft
Counted as living area: Yes

Heated: Yes
Finished: Yes
Enclosed: Yes
Contiguous: Yes
Permitted: Yes
Wet space: No
Addition: No
Conversion: No