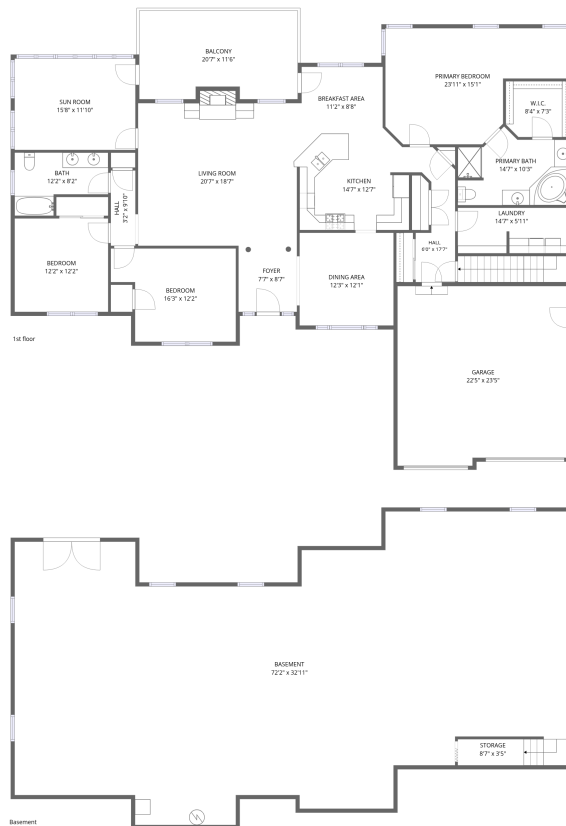


Home data report

137 Stanleys Loop, Ferrum, Franklin County, Virginia, United States, 24088



Total Area: 2323 sq. ft

Basement: 0 sq. ft, 1st Floor: 2323 sq. ft

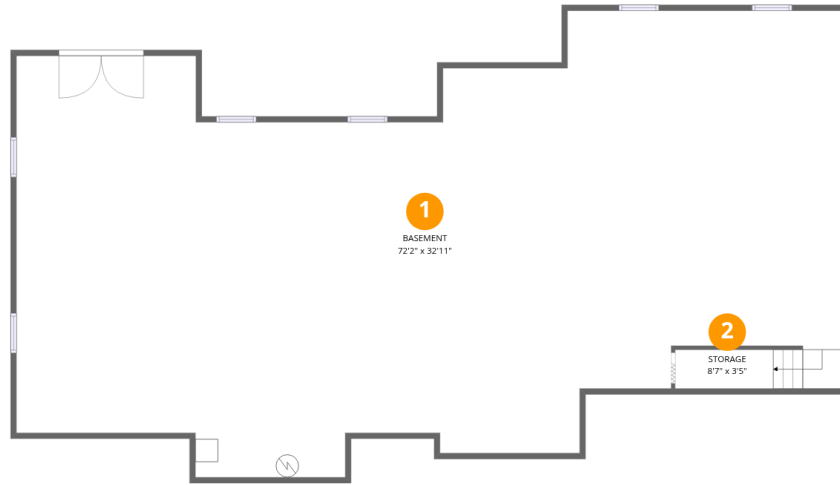
Excluded: Basement 2291 sq. ft, Storage 29 sq. ft, Garage 511 sq. ft, Balcony 228 sq. ft, Fireplace 9 sq. ft, Walls: 271 sq. ft

Property summary



Home data report

137 Stanleys Loop, Ferrum, Franklin County, Virginia, United States, 24088



Room dimensions

Floor 1 Below grade

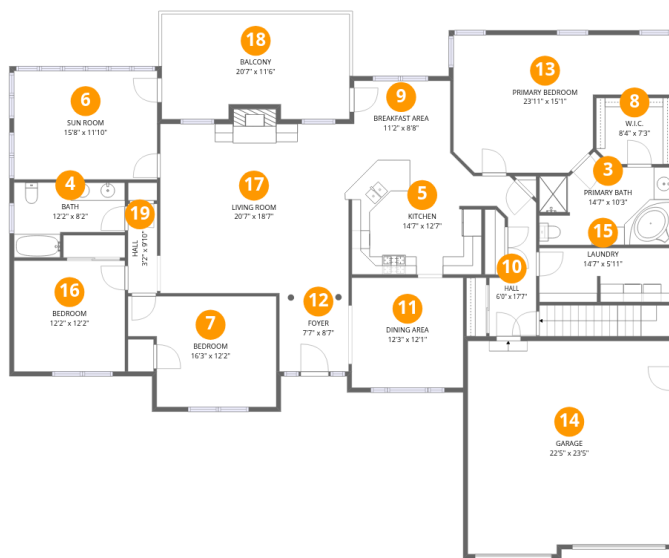
Total:0sqft

Excluded: 2320sqft

#		Dimensions	sqft	Counted as living area
1	Basement	72'2" x 32'11"	2286 sq. ft	No
2	Storage	8'7" x 3'5"	29 sq. ft	No

Home data report

137 Stanleys Loop, Ferrum, Franklin County, Virginia, United States, 24088



Room dimensions

Floor 2

Total:2323sqft

Excluded: 748sqft

#		Dimensions	sqft	Counted as living area
3	Primary Bath	14'7" x 10'3"	122 sq. ft	Yes
4	Bath	12'2" x 8'2"	80 sq. ft	Yes
5	Kitchen	14'7" x 12'7"	176 sq. ft	Yes
6	Sun Room	15'8" x 11'10"	187 sq. ft	Yes
7	Bedroom	16'3" x 12'2"	173 sq. ft	Yes
8	W.I.C.	8'4" x 7'3"	59 sq. ft	Yes
9	Breakfast Area	11'2" x 8'8"	95 sq. ft	Yes
10	Hall	6'0" x 17'7"	74 sq. ft	Yes
11	Dining Area	12'3" x 12'1"	148 sq. ft	Yes
12	Foyer	7'7" x 8'7"	65 sq. ft	Yes
13	Primary Bedroom	23'11" x 15'1"	282 sq. ft	Yes

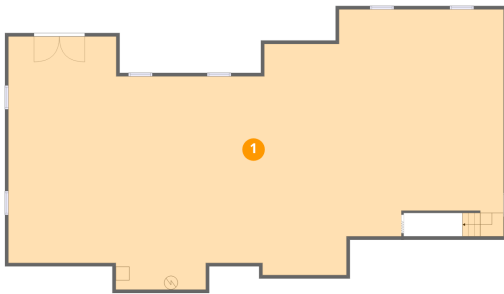
Home data report

137 Stanleys Loop, Ferrum, Franklin County, Virginia, United States, 24088

#		Dimensions	sqft	Counted as living area
14	Garage	22'5" x 23'5"	511 sq. ft	No
15	Laundry	14'7" x 5'11"	85 sq. ft	Yes
16	Bedroom	12'2" x 12'2"	148 sq. ft	Yes
17	Living Room	20'7" x 18'7"	391 sq. ft	Yes
18	Balcony	20'7" x 11'6"	228 sq. ft	No
19	Hall	3'2" x 9'10"	31 sq. ft	Yes

137 Stanleys Loop, Ferrum, Franklin County, Virginia, United States, 24088

1 Floor 1 - Basement



Dimensions: 72'2" x 32'11"
Area: 2286 sq. ft
Counted as living area: No

Heated: Yes
Finished: No
Enclosed: Yes
Contiguous: Yes
Permitted: Yes
Wet space: No
Addition: No
Conversion: No

2 Floor 1 - Storage

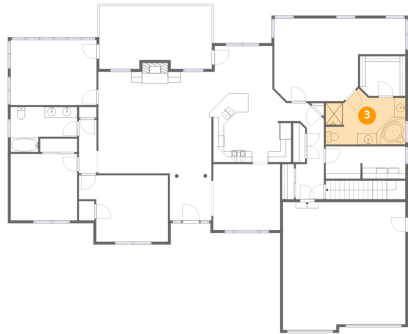


Dimensions: 8'7" x 3'5"
Area: 29 sq. ft
Counted as living area: No

Heated: No
Finished: No
Enclosed: No
Contiguous: Yes
Permitted: Yes
Wet space: No
Addition: No
Conversion: No

137 Stanleys Loop, Ferrum, Franklin County, Virginia, United States, 24088

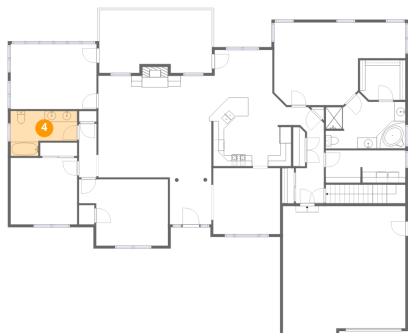
3 Floor 2 - Primary Bath



Dimensions: 14'7" x 10'3"
Area: 122 sq. ft
Counted as living area: Yes

Heated: Yes
Finished: Yes
Enclosed: Yes
Contiguous: Yes
Permitted: Yes
Wet space: Yes
Addition: No
Conversion: No

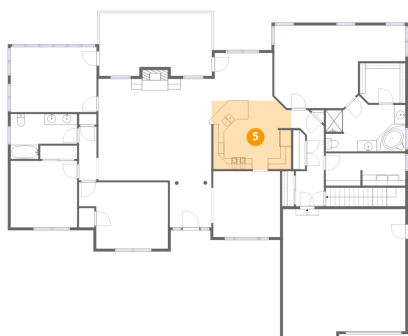
4 Floor 2 - Bath



Dimensions: 12'2" x 8'2"
Area: 80 sq. ft
Counted as living area: Yes

Heated: Yes
Finished: Yes
Enclosed: Yes
Contiguous: Yes
Permitted: Yes
Wet space: Yes
Addition: No
Conversion: No

5 Floor 2 - Kitchen

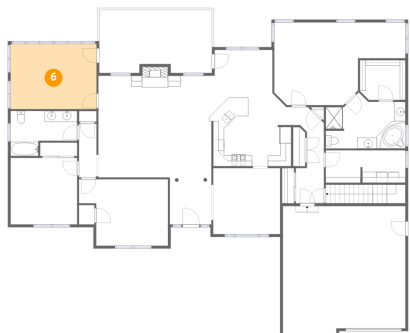


Dimensions: 14'7" x 12'7"
Area: 176 sq. ft
Counted as living area: Yes

Heated: Yes
Finished: Yes
Enclosed: Yes
Contiguous: Yes
Permitted: Yes
Wet space: No
Addition: No
Conversion: No

137 Stanleys Loop, Ferrum, Franklin County, Virginia, United States, 24088

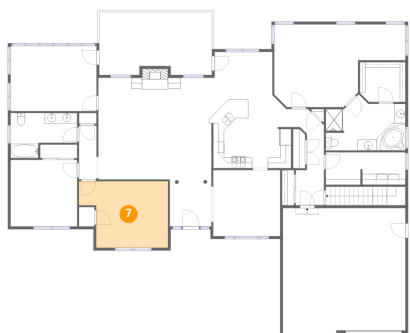
6 Floor 2 - Sun Room



Dimensions: 15'8" x 11'10"
Area: 187 sq. ft
Counted as living area: Yes

Heated: Yes
Finished: Yes
Enclosed: Yes
Contiguous: Yes
Permitted: Yes
Wet space: No
Addition: No
Conversion: No

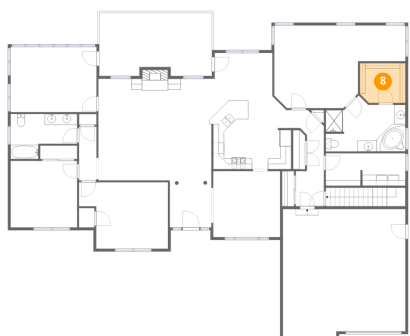
7 Floor 2 - Bedroom



Dimensions: 16'3" x 12'2"
Area: 173 sq. ft
Counted as living area: Yes

Heated: Yes
Finished: Yes
Enclosed: Yes
Contiguous: Yes
Permitted: Yes
Wet space: No
Addition: No
Conversion: No

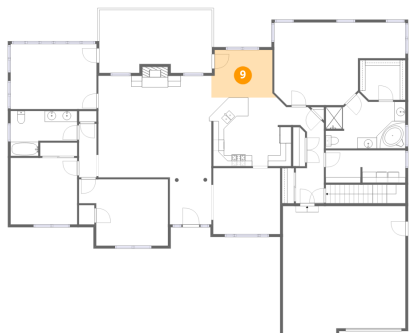
8 Floor 2 - W.I.C.



Dimensions: 8'4" x 7'3"
Area: 59 sq. ft
Counted as living area: Yes

Heated: Yes
Finished: Yes
Enclosed: Yes
Contiguous: Yes
Permitted: Yes
Wet space: No
Addition: No
Conversion: No

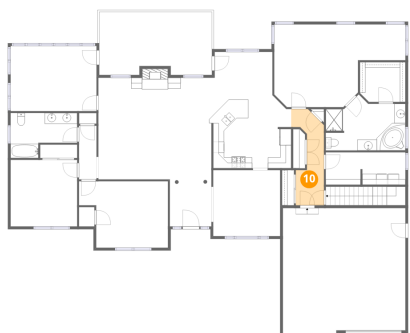
9 Floor 2 - Breakfast Area



Dimensions: 11'2" x 8'8"
Area: 95 sq. ft
Counted as living area: Yes

Heated: Yes
Finished: Yes
Enclosed: Yes
Contiguous: Yes
Permitted: Yes
Wet space: No
Addition: No
Conversion: No

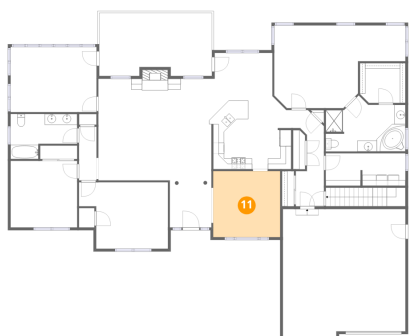
10 Floor 2 - Hall



Dimensions: 6'0" x 17'7"
Area: 74 sq. ft
Counted as living area: Yes

Heated: Yes
Finished: Yes
Enclosed: Yes
Contiguous: Yes
Permitted: Yes
Wet space: No
Addition: No
Conversion: No

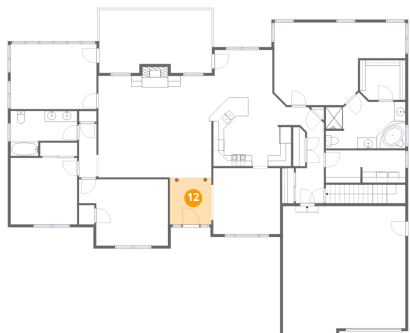
11 Floor 2 - Dining Area



Dimensions: 12'3" x 12'1"
Area: 148 sq. ft
Counted as living area: Yes

Heated: Yes
Finished: Yes
Enclosed: Yes
Contiguous: Yes
Permitted: Yes
Wet space: No
Addition: No
Conversion: No

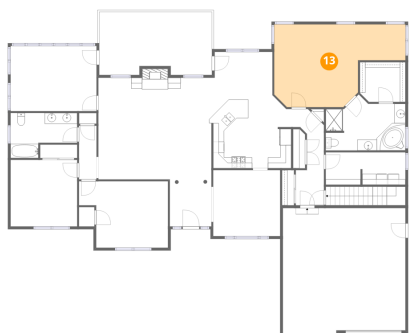
12 Floor 2 - Foyer



Dimensions: 7'7" x 8'7"
Area: 65 sq. ft
Counted as living area: Yes

Heated: Yes
Finished: Yes
Enclosed: Yes
Contiguous: Yes
Permitted: Yes
Wet space: No
Addition: No
Conversion: No

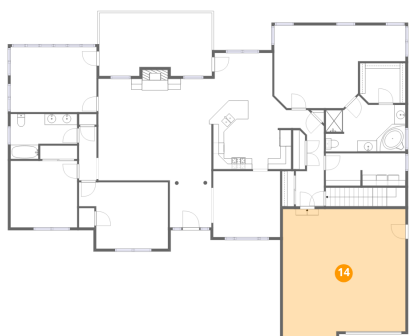
13 Floor 2 - Primary Bedroom



Dimensions: 23'11" x 15'1"
Area: 282 sq. ft
Counted as living area: Yes

Heated: Yes
Finished: Yes
Enclosed: Yes
Contiguous: Yes
Permitted: Yes
Wet space: No
Addition: No
Conversion: No

14 Floor 2 - Garage

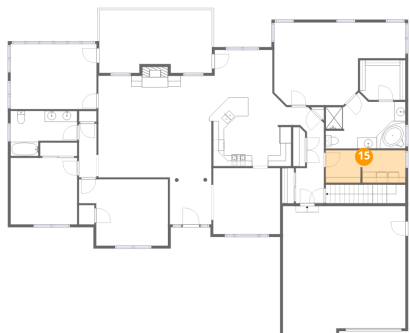


Dimensions: 22'5" x 23'5"
Area: 511 sq. ft
Counted as living area: No

Heated: No
Finished: No
Enclosed: Yes
Contiguous: Yes
Permitted: Yes
Wet space: No
Addition: No
Conversion: No

137 Stanleys Loop, Ferrum, Franklin County, Virginia, United States, 24088

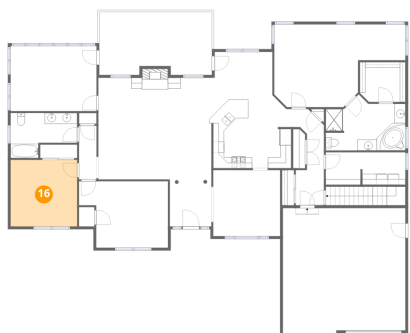
15 Floor 2 - Laundry



Dimensions: 14'7" x 5'11"
Area: 85 sq. ft
Counted as living area: Yes

Heated: Yes
Finished: Yes
Enclosed: Yes
Contiguous: Yes
Permitted: Yes
Wet space: No
Addition: No
Conversion: No

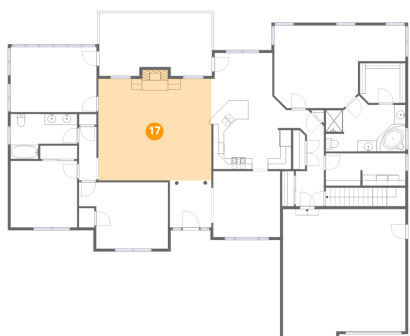
16 Floor 2 - Bedroom



Dimensions: 12'2" x 12'2"
Area: 148 sq. ft
Counted as living area: Yes

Heated: Yes
Finished: Yes
Enclosed: Yes
Contiguous: Yes
Permitted: Yes
Wet space: No
Addition: No
Conversion: No

17 Floor 2 - Living Room

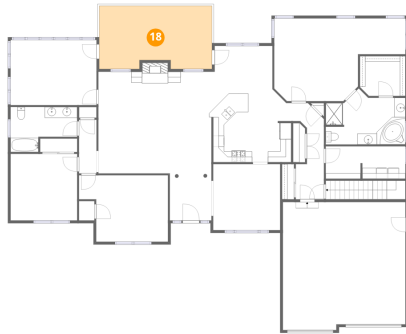


Dimensions: 20'7" x 18'7"
Area: 391 sq. ft
Counted as living area: Yes

Heated: Yes
Finished: Yes
Enclosed: Yes
Contiguous: Yes
Permitted: Yes
Wet space: No
Addition: No
Conversion: No

137 Stanleys Loop, Ferrum, Franklin County, Virginia, United States, 24088

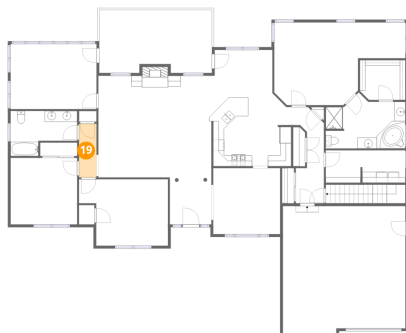
18 Floor 2 - Balcony



Dimensions: 20'7" x 11'6"
Area: 228 sq. ft
Counted as living area: No

Heated: No
Finished: No
Enclosed: No
Contiguous: Yes
Permitted: Yes
Wet space: No
Addition: No
Conversion: No

19 Floor 2 - Hall



Dimensions: 3'2" x 9'10"
Area: 31 sq. ft
Counted as living area: Yes

Heated: Yes
Finished: Yes
Enclosed: Yes
Contiguous: Yes
Permitted: Yes
Wet space: No
Addition: No
Conversion: No