

Home data report

1295 South Banana River Drive, Merritt Island, Brevard County, Florida, United States, 32952



Total Area: 4917 sq. ft

1st Floor: 1808 sq. ft, 2nd Floor: 2123 sq. ft, 3rd Floor: 986 sq. ft

Excluded: Garage 1200 sq. ft

Property summary

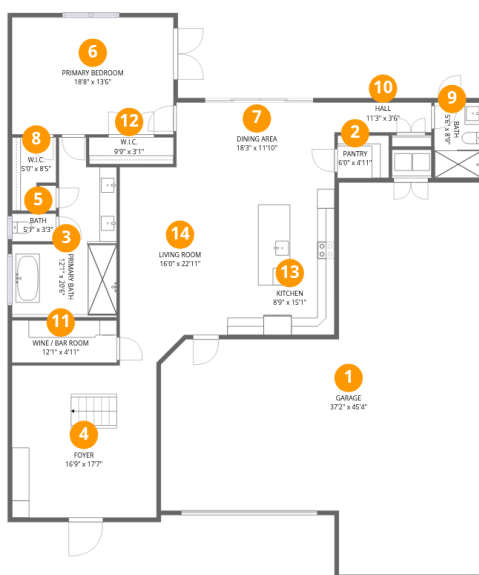


Scan captured on Fri, 15 May 2026 21:21:01 GMT

FLOOR PLAN CREATED BY CUBICASA APP. MEASUREMENTS DEEMED HIGHLY RELIABLE BUT NOT GUARANTEED.

Home data report

1295 South Banana River Drive, Merritt Island, Brevard County, Florida, United States, 32952



Room dimensions

Floor 1

Total:1808sqft

Excluded: 1200sqft

#		Dimensions	sqft	Counted as living area
1	Garage	37'2" x 45'4"	1155 sq. ft	No
2	Pantry	6'0" x 4'11"	30 sq. ft	Yes
3	Primary Bath	12'1" x 20'6"	173 sq. ft	Yes
4	Foyer	16'9" x 17'7"	294 sq. ft	Yes
5	Bath	5'1" x 3'3"	16 sq. ft	Yes
6	Primary Bedroom	18'8" x 13'6"	253 sq. ft	Yes
7	Dining Area	18'3" x 11'10"	196 sq. ft	Yes
8	W.I.C.	5'0" x 8'5"	36 sq. ft	Yes
9	Bath	5'6" x 8'9"	48 sq. ft	Yes
10	Hall	11'3" x 3'6"	39 sq. ft	Yes
11	Wine / Bar Room	12'1" x 4'11"	59 sq. ft	Yes

Scan captured on Fri, 15 May 2026 21:21:01 GMT

FLOOR PLAN CREATED BY CUBICASA APP. MEASUREMENTS DEEMED HIGHLY RELIABLE BUT NOT GUARANTEED.

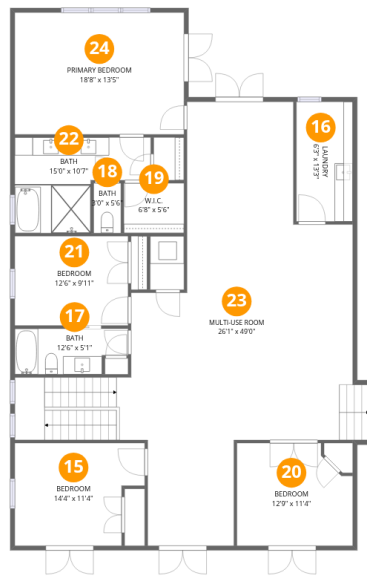
Home data report

**1295 South Banana River Drive, Merritt Island, Brevard County,
Florida, United States, 32952**

#		Dimensions	sqft	Counted as living area
12	W.I.C.	9'9" x 3'1"	30 sq. ft	Yes
13	Kitchen	8'9" x 15'1"	133 sq. ft	Yes
14	Living Room	16'0" x 22'11"	311 sq. ft	Yes

Home data report

1295 South Banana River Drive, Merritt Island, Brevard County, Florida, United States, 32952



Room dimensions

Floor 2

Total:2123sqft Excluded: 0sqft

#		Dimensions	sqft	Counted as living area
15	Bedroom	14'4" x 11'4"	146 sq. ft	Yes
16	Laundry	6'3" x 13'3"	82 sq. ft	Yes
17	Bath	12'6" x 5'1"	57 sq. ft	Yes
18	Bath	3'0" x 5'6"	17 sq. ft	Yes
19	W.I.C.	6'8" x 5'6"	37 sq. ft	Yes
20	Bedroom	12'9" x 11'4"	135 sq. ft	Yes
21	Bedroom	12'6" x 9'11"	124 sq. ft	Yes
22	Bath	15'0" x 10'7"	120 sq. ft	Yes
23	Multi-use Room	26'1" x 49'0"	906 sq. ft	Yes
24	Primary Bedroom	18'8" x 13'5"	251 sq. ft	Yes

Home data report

1295 South Banana River Drive, Merritt Island, Brevard County, Florida, United States, 32952



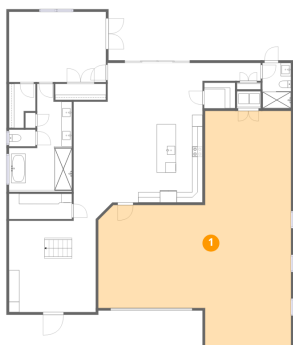
Room dimensions

Floor 3

Total:986sqft Excluded: 0sqft

#		Dimensions	sqft	Counted as living area
25	Bedroom	10'10" x 15'2"	146 sq. ft	Yes
26	Bath	5'5" x 11'1"	60 sq. ft	Yes
27	Kitchen / Wet Bar	16'9" x 15'5"	241 sq. ft	Yes
28	Family Room	16'9" x 25'8"	438 sq. ft	Yes

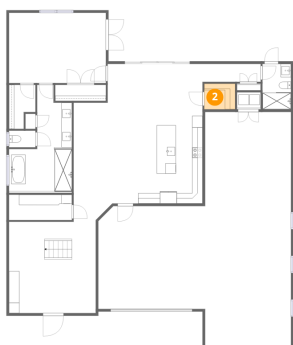
1 Floor 1 - Garage



Dimensions: 37'2" x 45'4"
Area: 1155 sq. ft
Counted as living area: No

Heated: No
Finished: No
Enclosed: Yes
Contiguous: Yes
Permitted: Yes
Wet space: No
Addition: No
Conversion: No

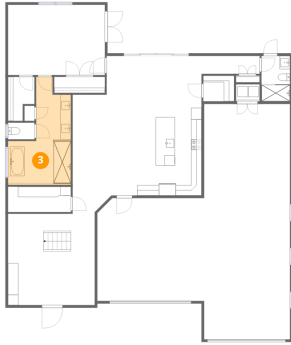
2 Floor 1 - Pantry



Dimensions: 6'0" x 4'11"
Area: 30 sq. ft
Counted as living area: Yes

Heated: Yes
Finished: Yes
Enclosed: Yes
Contiguous: Yes
Permitted: Yes
Wet space: No
Addition: No
Conversion: No

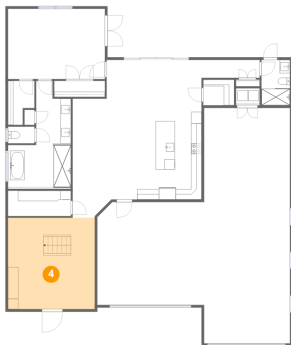
3 Floor 1 - Primary Bath



Dimensions: 12'1" x 20'6"
Area: 173 sq. ft
Counted as living area: Yes

Heated: Yes
Finished: Yes
Enclosed: Yes
Contiguous: Yes
Permitted: Yes
Wet space: Yes
Addition: No
Conversion: No

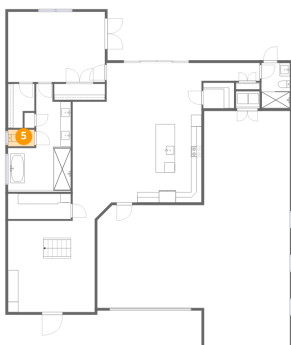
4 Floor 1 - Foyer



Dimensions: 16'9" x 17'7"
Area: 294 sq. ft
Counted as living area: Yes

Heated: Yes
Finished: Yes
Enclosed: Yes
Contiguous: Yes
Permitted: Yes
Wet space: No
Addition: No
Conversion: No

5 Floor 1 - Bath



Dimensions: 5'1" x 3'3"
Area: 16 sq. ft
Counted as living area: Yes

Heated: Yes
Finished: Yes
Enclosed: Yes
Contiguous: Yes
Permitted: Yes
Wet space: Yes
Addition: No
Conversion: No

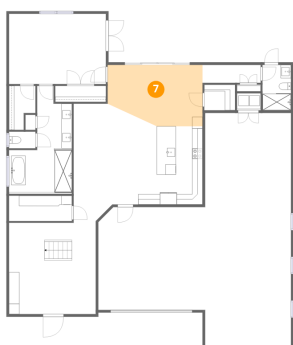
6 Floor 1 - Primary Bedroom



Dimensions: 18'8" x 13'6"
Area: 253 sq. ft
Counted as living area: Yes

Heated: Yes
Finished: Yes
Enclosed: Yes
Contiguous: Yes
Permitted: Yes
Wet space: No
Addition: No
Conversion: No

7 Floor 1 - Dining Area



Dimensions: 18'3" x 11'10"
Area: 196 sq. ft
Counted as living area: Yes

Heated: Yes
Finished: Yes
Enclosed: Yes
Contiguous: Yes
Permitted: Yes
Wet space: No
Addition: No
Conversion: No

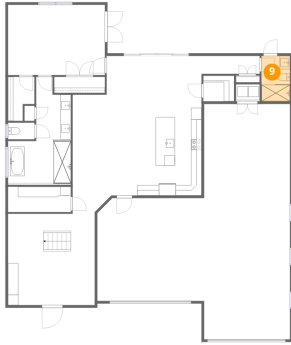
8 Floor 1 - W.I.C.



Dimensions: 5'0" x 8'5"
Area: 36 sq. ft
Counted as living area: Yes

Heated: Yes
Finished: Yes
Enclosed: Yes
Contiguous: Yes
Permitted: Yes
Wet space: No
Addition: No
Conversion: No

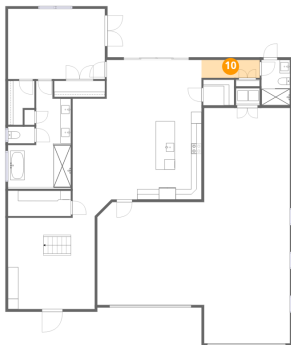
9 Floor 1 - Bath



Dimensions: 5'6" x 8'9"
Area: 48 sq. ft
Counted as living area: Yes

Heated: Yes
Finished: Yes
Enclosed: Yes
Contiguous: Yes
Permitted: Yes
Wet space: Yes
Addition: No
Conversion: No

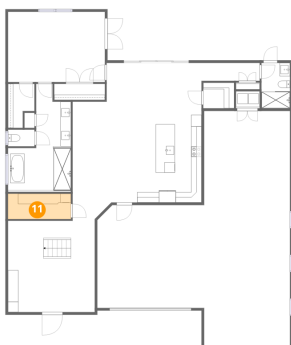
10 Floor 1 - Hall



Dimensions: 11'3" x 3'6"
Area: 39 sq. ft
Counted as living area: Yes

Heated: Yes
Finished: Yes
Enclosed: Yes
Contiguous: Yes
Permitted: Yes
Wet space: No
Addition: No
Conversion: No

11 Floor 1 - Wine / Bar Room

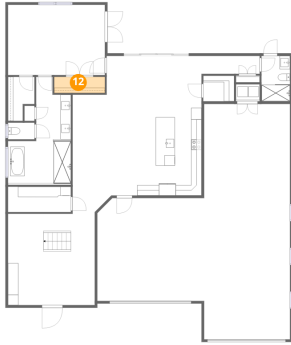


Dimensions: 12'1" x 4'11"
Area: 59 sq. ft
Counted as living area: Yes

Heated: Yes
Finished: Yes
Enclosed: Yes
Contiguous: Yes
Permitted: Yes
Wet space: No
Addition: No
Conversion: No

1295 South Banana River Drive, Merritt Island, Brevard County, Florida, United States, 32952

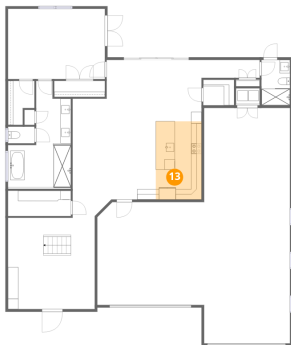
12 Floor 1 - W.I.C.



Dimensions: 9'9" x 3'1"
Area: 30 sq. ft
Counted as living area: Yes

Heated: Yes
Finished: Yes
Enclosed: Yes
Contiguous: Yes
Permitted: Yes
Wet space: No
Addition: No
Conversion: No

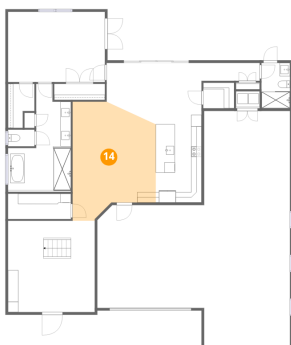
13 Floor 1 - Kitchen



Dimensions: 8'9" x 15'1"
Area: 133 sq. ft
Counted as living area: Yes

Heated: Yes
Finished: Yes
Enclosed: Yes
Contiguous: Yes
Permitted: Yes
Wet space: No
Addition: No
Conversion: No

14 Floor 1 - Living Room



Dimensions: 16'0" x 22'11"
Area: 311 sq. ft
Counted as living area: Yes

Heated: Yes
Finished: Yes
Enclosed: Yes
Contiguous: Yes
Permitted: Yes
Wet space: No
Addition: No
Conversion: No

15 Floor 2 - Bedroom



Dimensions: 14'4" x 11'4"
Area: 146 sq. ft
Counted as living area: Yes

Heated: Yes
Finished: Yes
Enclosed: Yes
Contiguous: Yes
Permitted: Yes
Wet space: No
Addition: No
Conversion: No

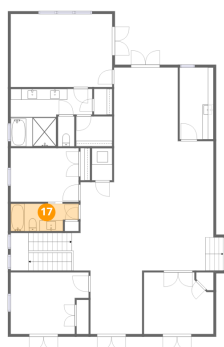
16 Floor 2 - Laundry



Dimensions: 6'3" x 13'3"
Area: 82 sq. ft
Counted as living area: Yes

Heated: Yes
Finished: Yes
Enclosed: Yes
Contiguous: Yes
Permitted: Yes
Wet space: No
Addition: No
Conversion: No

17 Floor 2 - Bath



Dimensions: 12'6" x 5'1"
Area: 57 sq. ft
Counted as living area: Yes

Heated: Yes
Finished: Yes
Enclosed: Yes
Contiguous: Yes
Permitted: Yes
Wet space: Yes
Addition: No
Conversion: No

18 Floor 2 - Bath



Dimensions: 3'0" x 5'6"
Area: 17 sq. ft
Counted as living area: Yes

Heated: Yes
Finished: Yes
Enclosed: Yes
Contiguous: Yes
Permitted: Yes
Wet space: Yes
Addition: No
Conversion: No

19 Floor 2 - W.I.C.



Dimensions: 6'8" x 5'6"
Area: 37 sq. ft
Counted as living area: Yes

Heated: Yes
Finished: Yes
Enclosed: Yes
Contiguous: Yes
Permitted: Yes
Wet space: No
Addition: No
Conversion: No

20 Floor 2 - Bedroom



Dimensions: 12'9" x 11'4"
Area: 135 sq. ft
Counted as living area: Yes

Heated: Yes
Finished: Yes
Enclosed: Yes
Contiguous: Yes
Permitted: Yes
Wet space: No
Addition: No
Conversion: No

1295 South Banana River Drive, Merritt Island, Brevard County, Florida, United States, 32952

21 Floor 2 - Bedroom



Dimensions: 12'6" x 9'11"
Area: 124 sq. ft
Counted as living area: Yes

Heated: Yes
Finished: Yes
Enclosed: Yes
Contiguous: Yes
Permitted: Yes
Wet space: No
Addition: No
Conversion: No

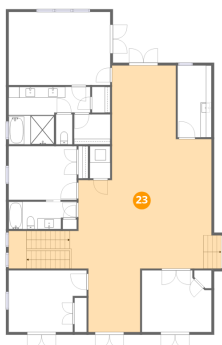
22 Floor 2 - Bath



Dimensions: 15'0" x 10'7"
Area: 120 sq. ft
Counted as living area: Yes

Heated: Yes
Finished: Yes
Enclosed: Yes
Contiguous: Yes
Permitted: Yes
Wet space: Yes
Addition: No
Conversion: No

23 Floor 2 - Multi-use Room



Dimensions: 26'1" x 49'0"
Area: 906 sq. ft
Counted as living area: Yes

Heated: Yes
Finished: Yes
Enclosed: Yes
Contiguous: Yes
Permitted: Yes
Wet space: No
Addition: No
Conversion: No

1295 South Banana River Drive, Merritt Island, Brevard County, Florida, United States, 32952

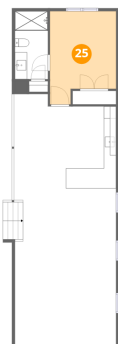
24 Floor 2 - Primary Bedroom



Dimensions: 18'8" x 13'5"
Area: 251 sq. ft
Counted as living area: Yes

Heated: Yes
Finished: Yes
Enclosed: Yes
Contiguous: Yes
Permitted: Yes
Wet space: No
Addition: No
Conversion: No

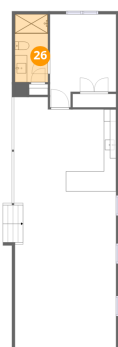
25 Floor 3 - Bedroom



Dimensions: 10'10" x 15'2"
Area: 146 sq. ft
Counted as living area: Yes

Heated: Yes
Finished: Yes
Enclosed: Yes
Contiguous: Yes
Permitted: Yes
Wet space: No
Addition: No
Conversion: No

26 Floor 3 - Bath

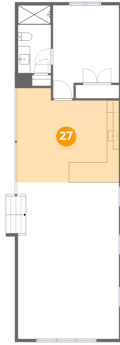


Dimensions: 5'5" x 11'1"
Area: 60 sq. ft
Counted as living area: Yes

Heated: Yes
Finished: Yes
Enclosed: Yes
Contiguous: Yes
Permitted: Yes
Wet space: Yes
Addition: No
Conversion: No

1295 South Banana River Drive, Merritt Island, Brevard County, Florida, United States, 32952

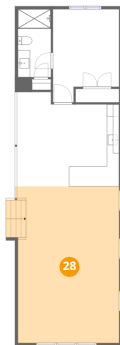
27 Floor 3 - Kitchen / Wet Bar



Dimensions: 16'9" x 15'5"
Area: 241 sq. ft
Counted as living area: Yes

Heated: Yes
Finished: Yes
Enclosed: Yes
Contiguous: Yes
Permitted: Yes
Wet space: No
Addition: No
Conversion: No

28 Floor 3 - Family Room



Dimensions: 16'9" x 25'8"
Area: 438 sq. ft
Counted as living area: Yes

Heated: Yes
Finished: Yes
Enclosed: Yes
Contiguous: Yes
Permitted: Yes
Wet space: No
Addition: No
Conversion: No