

Home data report

1768 Alean Road, Piedmont Mill, Wirtz, Franklin County, Virginia,
United States, 24184



Total Area: 2669 sq. ft

Basement 1: 1188 sq. ft, 1st Floor: 1325 sq. ft, 2nd Floor: 156 sq. ft

Excluded: Storage 56 sq. ft, Utility 73 sq. ft, Garage 542 sq. ft, Screened porch 179 sq. ft, Deck 327 sq. ft, Low ceiling 111 sq. ft, Walls: 246 sq. ft

Property summary

 **3** Floors

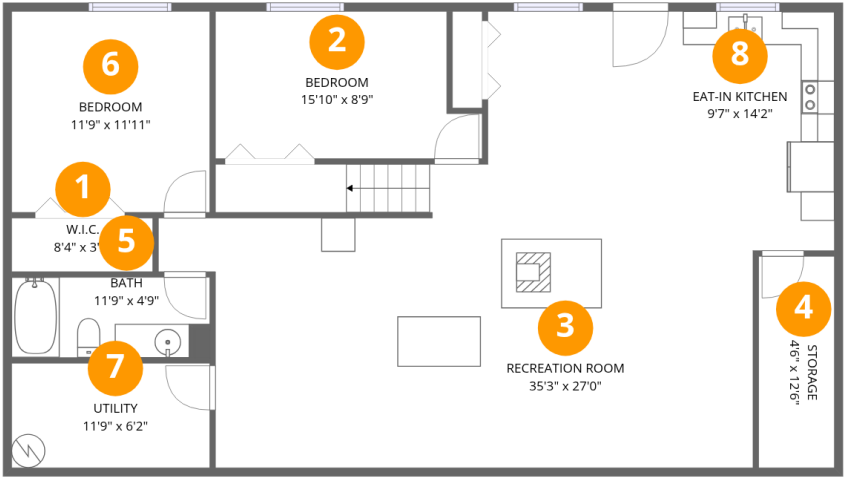
 **4** Bedrooms

 **3** Bathrooms

 **1** Garages

Home data report

1768 Alean Road, Piedmont Mill, Wirtz, Franklin County, Virginia,
United States, 24184



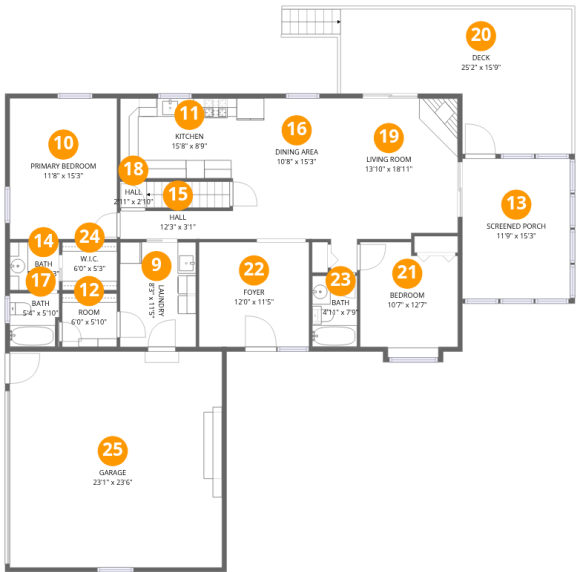
Room dimensions

Floor 1 Below grade Total:1188sqft Excluded: 129sqft

#		Dimensions	sqft	Counted as living area
1	W.I.C.	8'4" x 3'2"	27 sq. ft	Yes
2	Bedroom	15'10" x 8'9"	138 sq. ft	Yes
3	Recreation Room	35'3" x 27'0"	952 sq. ft	Yes
4	Storage	4'6" x 12'6"	56 sq. ft	No
5	Bath	11'9" x 4'9"	56 sq. ft	Yes
6	Bedroom	11'9" x 11'11"	140 sq. ft	Yes
7	Utility	11'9" x 6'2"	73 sq. ft	No
8	Eat-in Kitchen	9'7" x 14'2"	135 sq. ft	Yes

Home data report

1768 Alean Road, Piedmont Mill, Wirtz, Franklin County, Virginia,
United States, 24184



Room dimensions

Floor 2

Total:1325sqft

Excluded: 1048sqft

#		Dimensions	sqft	Counted as living area
9	Laundry	8'3" x 11'5"	94 sq. ft	Yes
10	Primary Bedroom	11'8" x 15'3"	178 sq. ft	Yes
11	Kitchen	15'8" x 8'9"	136 sq. ft	Yes
12	Room	6'0" x 5'10"	35 sq. ft	Yes
13	Screened Porch	11'9" x 15'3"	179 sq. ft	No
14	Bath	5'4" x 5'3"	28 sq. ft	Yes
15	Hall	12'3" x 3'1"	38 sq. ft	Yes
16	Dining Area	10'8" x 15'3"	163 sq. ft	Yes
17	Bath	5'4" x 5'10"	31 sq. ft	Yes
18	Hall	2'11" x 2'10"	8 sq. ft	Yes
19	Living Room	13'10" x 18'11"	262 sq. ft	Yes

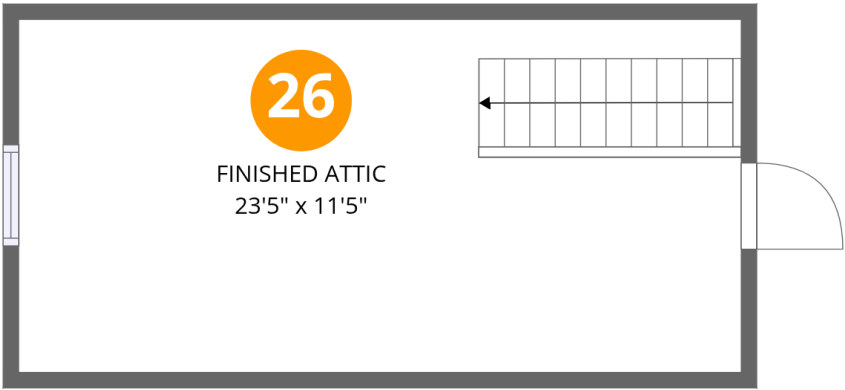
Home data report

**1768 Alean Road, Piedmont Mill, Wirtz, Franklin County, Virginia,
United States, 24184**

#		Dimensions	sqft	Counted as living area
20	Deck	25'2" x 15'9"	396 sq. ft	No
21	Bedroom	10'7" x 12'7"	133 sq. ft	Yes
22	Foyer	12'0" x 11'5"	136 sq. ft	Yes
23	Bath	4'11" x 7'9"	38 sq. ft	Yes
24	W.I.C.	6'0" x 5'3"	31 sq. ft	Yes
25	Garage	23'1" x 23'6"	542 sq. ft	No

Home data report

1768 Alean Road, Piedmont Mill, Wirtz, Franklin County, Virginia,
United States, 24184

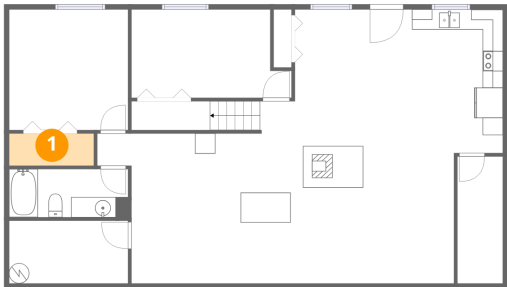


Room dimensions

Floor 3 Total:156sqft Excluded: 111sqft

#		Dimensions	sqft	Counted as living area
26	Finished Attic	23'5" x 11'5"	267 sq. ft	Yes

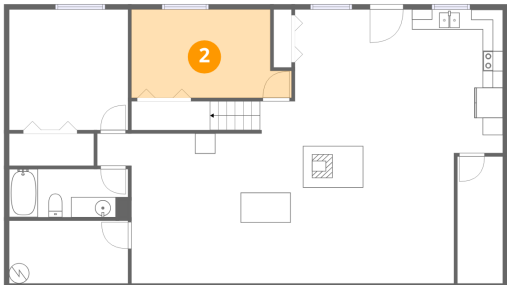
1 Floor 1 - W.I.C.



Dimensions: 8'4" x 3'2"
Area: 27 sq. ft
Counted as living area: Yes

Heated: Yes
Finished: Yes
Enclosed: Yes
Contiguous: Yes
Permitted: Yes
Wet space: No
Addition: No
Conversion: No

2 Floor 1 - Bedroom



Dimensions: 15'10" x 8'9"
Area: 138 sq. ft
Counted as living area: Yes

Heated: Yes
Finished: Yes
Enclosed: Yes
Contiguous: Yes
Permitted: Yes
Wet space: No
Addition: No
Conversion: No

Home data report

1768 Alean Road, Piedmont Mill, Wirtz, Franklin County, Virginia,
United States, 24184

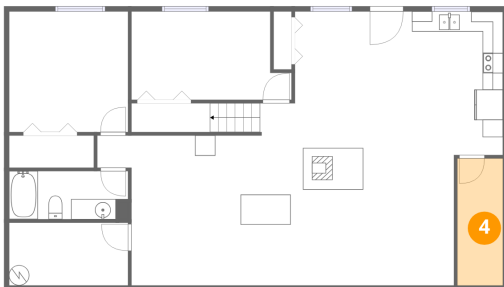
3 Floor 1 - Recreation Room



Dimensions: 35'3" x 27'0"
Area: 952 sq. ft
Counted as living area: Yes

Heated: Yes
Finished: Yes
Enclosed: Yes
Contiguous: Yes
Permitted: Yes
Wet space: No
Addition: No
Conversion: No

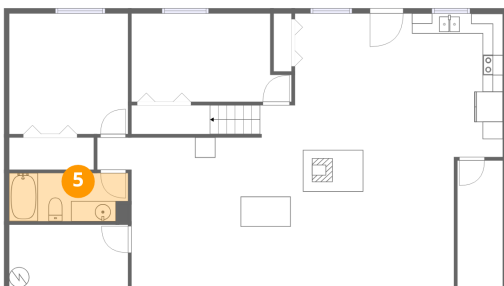
4 Floor 1 - Storage



Dimensions: 4'6" x 12'6"
Area: 56 sq. ft
Counted as living area: No

Heated: No
Finished: Yes
Enclosed: No
Contiguous: Yes
Permitted: Yes
Wet space: No
Addition: No
Conversion: No

5 Floor 1 - Bath



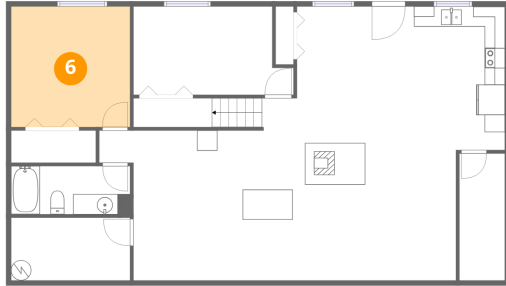
Dimensions: 11'9" x 4'9"
Area: 56 sq. ft
Counted as living area: Yes

Heated: Yes
Finished: Yes
Enclosed: Yes
Contiguous: Yes
Permitted: Yes
Wet space: Yes
Addition: No
Conversion: No

Home data report

1768 Alean Road, Piedmont Mill, Wirtz, Franklin County, Virginia,
United States, 24184

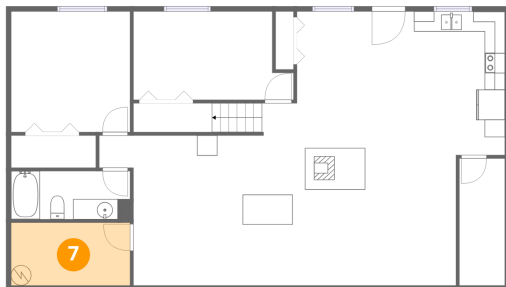
6 Floor 1 - Bedroom



Dimensions: 11'9" x 11'11"
Area: 140 sq. ft
Counted as living area: Yes

Heated: Yes
Finished: Yes
Enclosed: Yes
Contiguous: Yes
Permitted: Yes
Wet space: No
Addition: No
Conversion: No

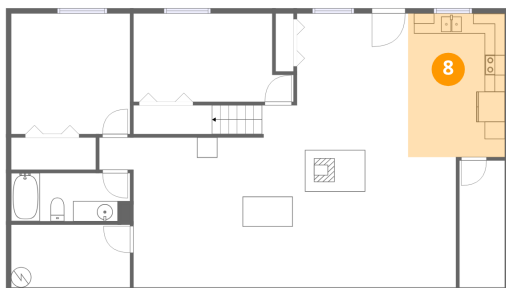
7 Floor 1 - Utility



Dimensions: 11'9" x 6'2"
Area: 73 sq. ft
Counted as living area: No

Heated: Yes
Finished: No
Enclosed: Yes
Contiguous: Yes
Permitted: Yes
Wet space: No
Addition: No
Conversion: No

8 Floor 1 - Eat-in Kitchen



Dimensions: 9'7" x 14'2"
Area: 135 sq. ft
Counted as living area: Yes

Heated: Yes
Finished: Yes
Enclosed: Yes
Contiguous: Yes
Permitted: Yes
Wet space: No
Addition: No
Conversion: No

1768 Alean Road, Piedmont Mill, Wirtz, Franklin County, Virginia,
United States, 24184

9 Floor 2 - Laundry



Dimensions: 8'3" x 11'5"
Area: 94 sq. ft
Counted as living area: Yes

Heated: Yes
Finished: Yes
Enclosed: Yes
Contiguous: Yes
Permitted: Yes
Wet space: No
Addition: No
Conversion: No

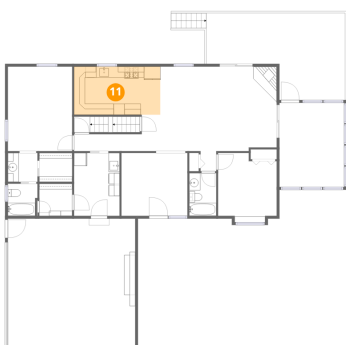
10 Floor 2 - Primary Bedroom



Dimensions: 11'8" x 15'3"
Area: 178 sq. ft
Counted as living area: Yes

Heated: Yes
Finished: Yes
Enclosed: Yes
Contiguous: Yes
Permitted: Yes
Wet space: No
Addition: No
Conversion: No

11 Floor 2 - Kitchen



Dimensions: 15'8" x 8'9"
Area: 136 sq. ft
Counted as living area: Yes

Heated: Yes
Finished: Yes
Enclosed: Yes
Contiguous: Yes
Permitted: Yes
Wet space: No
Addition: No
Conversion: No

Home data report

1768 Alean Road, Piedmont Mill, Wirtz, Franklin County, Virginia,
United States, 24184

12 Floor 2 - Room



Dimensions: 6'0" x 5'10"
Area: 35 sq. ft
Counted as living area: Yes

Heated: Yes
Finished: Yes
Enclosed: Yes
Contiguous: Yes
Permitted: Yes
Wet space: No
Addition: No
Conversion: No

13 Floor 2 - Screened Porch



Dimensions: 11'9" x 15'3"
Area: 179 sq. ft
Counted as living area: No

Heated: Yes
Finished: Yes
Enclosed: No
Contiguous: Yes
Permitted: Yes
Wet space: No
Addition: No
Conversion: No

14 Floor 2 - Bath



Dimensions: 5'4" x 5'3"
Area: 28 sq. ft
Counted as living area: Yes

Heated: Yes
Finished: Yes
Enclosed: Yes
Contiguous: Yes
Permitted: Yes
Wet space: Yes
Addition: No
Conversion: No

1768 Alean Road, Piedmont Mill, Wirtz, Franklin County, Virginia,
United States, 24184

15 Floor 2 - Hall



Dimensions: 12'3" x 3'1"
Area: 38 sq. ft
Counted as living area: Yes

Heated: Yes
Finished: Yes
Enclosed: Yes
Contiguous: Yes
Permitted: Yes
Wet space: No
Addition: No
Conversion: No

16 Floor 2 - Dining Area



Dimensions: 10'8" x 15'3"
Area: 163 sq. ft
Counted as living area: Yes

Heated: Yes
Finished: Yes
Enclosed: Yes
Contiguous: Yes
Permitted: Yes
Wet space: No
Addition: No
Conversion: No

17 Floor 2 - Bath



Dimensions: 5'4" x 5'10"
Area: 31 sq. ft
Counted as living area: Yes

Heated: Yes
Finished: Yes
Enclosed: Yes
Contiguous: Yes
Permitted: Yes
Wet space: Yes
Addition: No
Conversion: No

1768 Alean Road, Piedmont Mill, Wirtz, Franklin County, Virginia,
United States, 24184

18 Floor 2 - Hall



Dimensions: 2'11" x 2'10"
Area: 8 sq. ft
Counted as living area: Yes

Heated: Yes
Finished: Yes
Enclosed: Yes
Contiguous: Yes
Permitted: Yes
Wet space: No
Addition: No
Conversion: No

19 Floor 2 - Living Room



Dimensions: 13'10" x 18'11"
Area: 262 sq. ft
Counted as living area: Yes

Heated: Yes
Finished: Yes
Enclosed: Yes
Contiguous: Yes
Permitted: Yes
Wet space: No
Addition: No
Conversion: No

20 Floor 2 - Deck



Dimensions: 25'2" x 15'9"
Area: 396 sq. ft
Counted as living area: No

Heated: No
Finished: No
Enclosed: No
Contiguous: Yes
Permitted: Yes
Wet space: No
Addition: No
Conversion: No

Home data report

1768 Alean Road, Piedmont Mill, Wirtz, Franklin County, Virginia,
United States, 24184

21 Floor 2 - Bedroom



Dimensions: 10'7" x 12'7"
Area: 133 sq. ft
Counted as living area: Yes

Heated: Yes
Finished: Yes
Enclosed: Yes
Contiguous: Yes
Permitted: Yes
Wet space: No
Addition: No
Conversion: No

22 Floor 2 - Foyer



Dimensions: 12'0" x 11'5"
Area: 136 sq. ft
Counted as living area: Yes

Heated: Yes
Finished: Yes
Enclosed: Yes
Contiguous: Yes
Permitted: Yes
Wet space: No
Addition: No
Conversion: No

23 Floor 2 - Bath



Dimensions: 4'11" x 7'9"
Area: 38 sq. ft
Counted as living area: Yes

Heated: Yes
Finished: Yes
Enclosed: Yes
Contiguous: Yes
Permitted: Yes
Wet space: Yes
Addition: No
Conversion: No

Home data report

1768 Alean Road, Piedmont Mill, Wirtz, Franklin County, Virginia,
United States, 24184

24 Floor 2 - W.I.C.



Dimensions: 6'0" x 5'3"
Area: 31 sq. ft
Counted as living area: Yes

Heated: Yes
Finished: Yes
Enclosed: Yes
Contiguous: Yes
Permitted: Yes
Wet space: No
Addition: No
Conversion: No

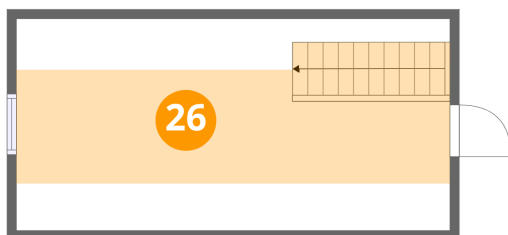
25 Floor 2 - Garage



Dimensions: 23'1" x 23'6"
Area: 542 sq. ft
Counted as living area: No

Heated: No
Finished: No
Enclosed: Yes
Contiguous: Yes
Permitted: Yes
Wet space: No
Addition: No
Conversion: No

26 Floor 3 - Finished Attic



Dimensions: 23'5" x 11'5"
Area: 267 sq. ft
Counted as living area: Yes

Heated: Yes
Finished: Yes
Enclosed: Yes
Contiguous: Yes
Permitted: Yes
Wet space: No
Addition: No
Conversion: No