

Home data report

6992 141st St, Basehor, Leavenworth County, Kansas, United States, 66007




Total Area: 2694 sq. ft

Basement: 1119 sq. ft, 1st Floor: 1575 sq. ft

Excluded: Shelter 31 sq. ft, Patio 330 sq. ft, Utility 408 sq. ft, Garage 648 sq. ft, Deck 179 sq. ft, Walls: 220 sq. ft

Property summary

 **2** Floors

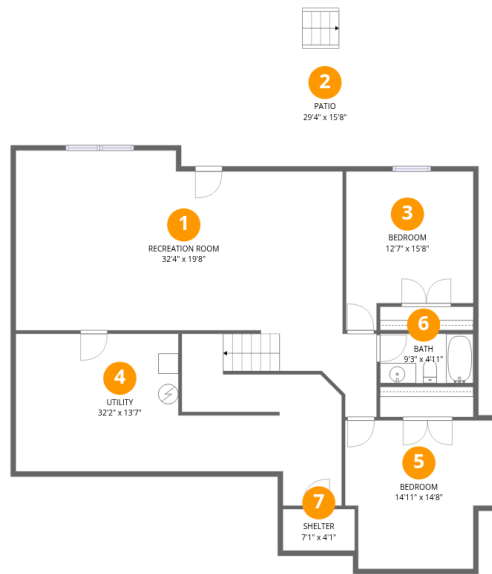
 **4** Bedrooms

 **3** Bathrooms

 **1** Garages

Home data report

6992 141st St, Basehor, Leavenworth County, Kansas, United States, 66007



Room dimensions

Floor 1 Below grade

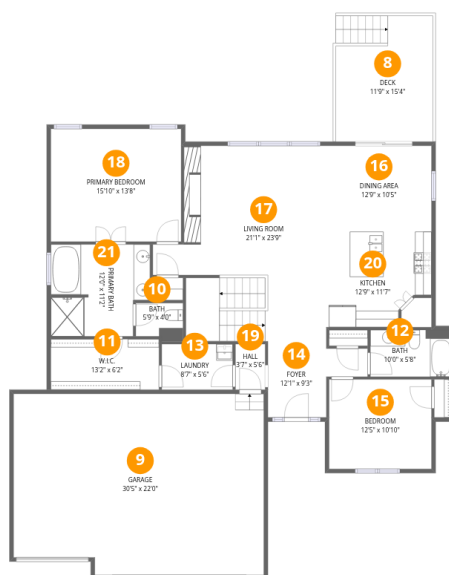
Total:1119sqft

Excluded: 769sqft

#		Dimensions	sqft	Counted as living area
1	Recreation Room	32'4" x 19'8"	636 sq. ft	Yes
2	Patio	29'4" x 15'8"	459 sq. ft	No
3	Bedroom	12'7" x 15'8"	197 sq. ft	Yes
4	Utility	32'2" x 13'7"	438 sq. ft	No
5	Bedroom	14'11" x 14'8"	218 sq. ft	Yes
6	Bath	9'3" x 4'11"	45 sq. ft	Yes
7	Shelter	7'1" x 4'1"	29 sq. ft	No

Home data report

6992 141st St, Basehor, Leavenworth County, Kansas, United States, 66007



Room dimensions

Floor 2

Total:1575sqft Excluded: 827sqft

#		Dimensions	sqft	Counted as living area
8	Deck	11'9" x 15'4"	180 sq. ft	No
9	Garage	30'5" x 22'0"	669 sq. ft	No
10	Bath	5'9" x 4'0"	23 sq. ft	Yes
11	W.I.C.	13'2" x 6'2"	81 sq. ft	Yes
12	Bath	10'0" x 5'8"	56 sq. ft	Yes
13	Laundry	8'7" x 5'6"	48 sq. ft	Yes
14	Foyer	12'1" x 9'3"	112 sq. ft	Yes
15	Bedroom	12'5" x 10'10"	135 sq. ft	Yes
16	Dining Area	12'9" x 10'5"	134 sq. ft	Yes
17	Living Room	21'1" x 23'9"	500 sq. ft	Yes
18	Primary Bedroom	15'10" x 13'8"	217 sq. ft	Yes

Home data report

6992 141st St, Basehor, Leavenworth County, Kansas, United States, 66007

#		Dimensions	sqft	Counted as living area
19	Hall	3'7" x 5'6"	20 sq. ft	Yes
20	Kitchen	12'9" x 11'7"	148 sq. ft	Yes
21	Primary Bath	12'0" x 11'2"	134 sq. ft	Yes

6992 141st St, Basehor, Leavenworth County, Kansas, United States, 66007

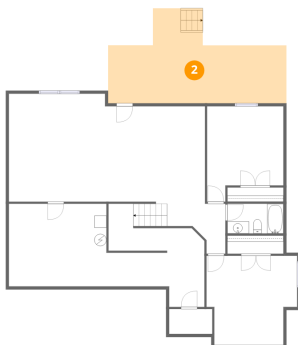
1 Floor 1 - Recreation Room



Dimensions: 32'4" x 19'8"
Area: 636 sq. ft
Counted as living area: Yes

Heated: Yes
Finished: Yes
Enclosed: Yes
Contiguous: Yes
Permitted: Yes
Wet space: No
Addition: No
Conversion: No

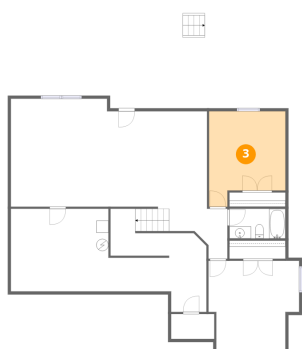
2 Floor 1 - Patio



Dimensions: 29'4" x 15'8"
Area: 459 sq. ft
Counted as living area: No

Heated: No
Finished: No
Enclosed: No
Contiguous: Yes
Permitted: Yes
Wet space: No
Addition: No
Conversion: No

3 Floor 1 - Bedroom



Dimensions: 12'7" x 15'8"
Area: 197 sq. ft
Counted as living area: Yes

Heated: Yes
Finished: Yes
Enclosed: Yes
Contiguous: Yes
Permitted: Yes
Wet space: No
Addition: No
Conversion: No

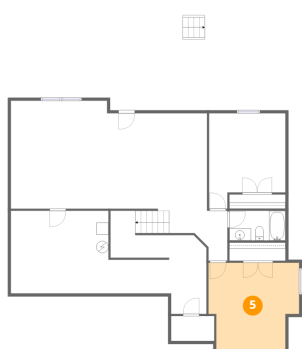
4 Floor 1 - Utility



Dimensions: 32'2" x 13'7"
Area: 438 sq. ft
Counted as living area: No

Heated: Yes
Finished: No
Enclosed: Yes
Contiguous: Yes
Permitted: Yes
Wet space: No
Addition: No
Conversion: No

5 Floor 1 - Bedroom



Dimensions: 14'11" x 14'8"
Area: 218 sq. ft
Counted as living area: Yes

Heated: Yes
Finished: Yes
Enclosed: Yes
Contiguous: Yes
Permitted: Yes
Wet space: No
Addition: No
Conversion: No

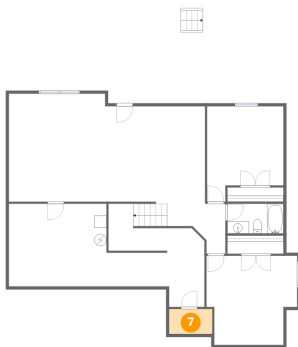
6 Floor 1 - Bath



Dimensions: 9'3" x 4'11"
Area: 45 sq. ft
Counted as living area: Yes

Heated: Yes
Finished: Yes
Enclosed: Yes
Contiguous: Yes
Permitted: Yes
Wet space: Yes
Addition: No
Conversion: No

7 Floor 1 - Shelter



Dimensions: 7'1" x 4'1"
Area: 29 sq. ft
Counted as living area: No

Heated: No
Finished: No
Enclosed: No
Contiguous: Yes
Permitted: Yes
Wet space: No
Addition: No
Conversion: No

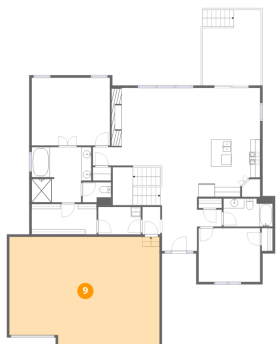
8 Floor 2 - Deck



Dimensions: 11'9" x 15'4"
Area: 180 sq. ft
Counted as living area: No

Heated: No
Finished: No
Enclosed: No
Contiguous: Yes
Permitted: Yes
Wet space: No
Addition: No
Conversion: No

9 Floor 2 - Garage



Dimensions: 30'5" x 22'0"
Area: 669 sq. ft
Counted as living area: No

Heated: No
Finished: No
Enclosed: Yes
Contiguous: Yes
Permitted: Yes
Wet space: No
Addition: No
Conversion: No

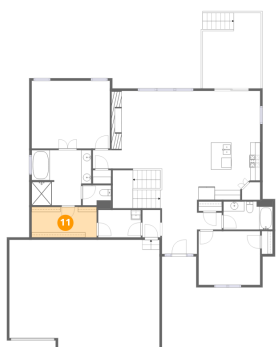
10 Floor 2 - Bath



Dimensions: 5'9" x 4'0"
Area: 23 sq. ft
Counted as living area: Yes

Heated: Yes
Finished: Yes
Enclosed: Yes
Contiguous: Yes
Permitted: Yes
Wet space: Yes
Addition: No
Conversion: No

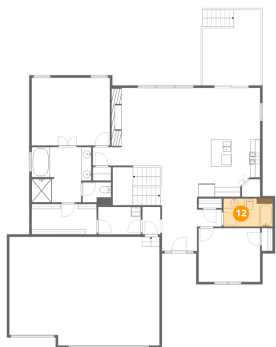
11 Floor 2 - W.I.C.



Dimensions: 13'2" x 6'2"
Area: 81 sq. ft
Counted as living area: Yes

Heated: Yes
Finished: Yes
Enclosed: Yes
Contiguous: Yes
Permitted: Yes
Wet space: No
Addition: No
Conversion: No

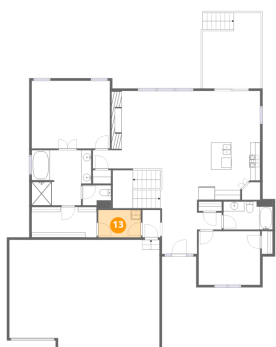
12 Floor 2 - Bath



Dimensions: 10'0" x 5'8"
Area: 56 sq. ft
Counted as living area: Yes

Heated: Yes
Finished: Yes
Enclosed: Yes
Contiguous: Yes
Permitted: Yes
Wet space: Yes
Addition: No
Conversion: No

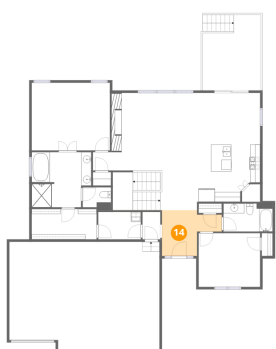
13 Floor 2 - Laundry



Dimensions: 8'7" x 5'6"
Area: 48 sq. ft
Counted as living area: Yes

Heated: Yes
Finished: Yes
Enclosed: Yes
Contiguous: Yes
Permitted: Yes
Wet space: No
Addition: No
Conversion: No

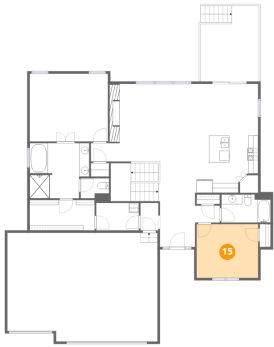
14 Floor 2 - Foyer



Dimensions: 12'1" x 9'3"
Area: 112 sq. ft
Counted as living area: Yes

Heated: Yes
Finished: Yes
Enclosed: Yes
Contiguous: Yes
Permitted: Yes
Wet space: No
Addition: No
Conversion: No

15 Floor 2 - Bedroom



Dimensions: 12'5" x 10'10"
Area: 135 sq. ft
Counted as living area: Yes

Heated: Yes
Finished: Yes
Enclosed: Yes
Contiguous: Yes
Permitted: Yes
Wet space: No
Addition: No
Conversion: No

16 Floor 2 - Dining Area



Dimensions: 12'9" x 10'5"
Area: 134 sq. ft
Counted as living area: Yes

Heated: Yes
Finished: Yes
Enclosed: Yes
Contiguous: Yes
Permitted: Yes
Wet space: No
Addition: No
Conversion: No

17 Floor 2 - Living Room



Dimensions: 21'1" x 23'9"
Area: 500 sq. ft
Counted as living area: Yes

Heated: Yes
Finished: Yes
Enclosed: Yes
Contiguous: Yes
Permitted: Yes
Wet space: No
Addition: No
Conversion: No

18 Floor 2 - Primary Bedroom



Dimensions: 15'10" x 13'8"
Area: 217 sq. ft
Counted as living area: Yes

Heated: Yes
Finished: Yes
Enclosed: Yes
Contiguous: Yes
Permitted: Yes
Wet space: No
Addition: No
Conversion: No

19 Floor 2 - Hall



Dimensions: 3'7" x 5'6"
Area: 20 sq. ft
Counted as living area: Yes

Heated: Yes
Finished: Yes
Enclosed: Yes
Contiguous: Yes
Permitted: Yes
Wet space: No
Addition: No
Conversion: No

20 Floor 2 - Kitchen



Dimensions: 12'9" x 11'7"
Area: 148 sq. ft
Counted as living area: Yes

Heated: Yes
Finished: Yes
Enclosed: Yes
Contiguous: Yes
Permitted: Yes
Wet space: No
Addition: No
Conversion: No

6992 141st St, Basehor, Leavenworth County, Kansas, United States, 66007

21 Floor 2 - Primary Bath



Dimensions: 12'0" x 11'2"
Area: 134 sq. ft
Counted as living area: Yes

Heated: Yes
Finished: Yes
Enclosed: Yes
Contiguous: Yes
Permitted: Yes
Wet space: Yes
Addition: No
Conversion: No