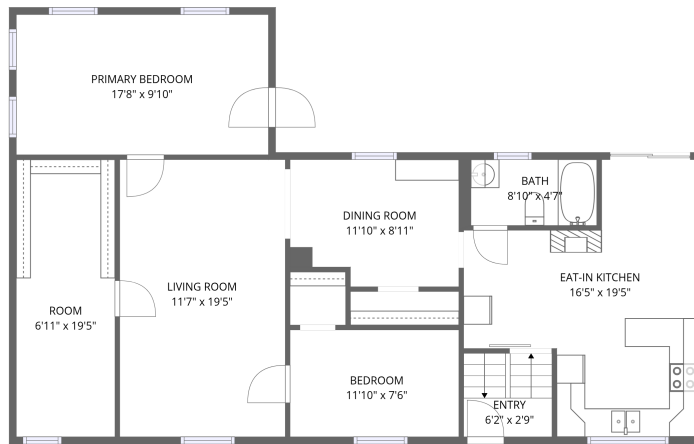


Home data report

4607 Dumoulin Ave, Lisle, IL, US



Total Area: 1242 sq. ft

Basement: 170 sq. ft, 1st Floor: 1072 sq. ft

Excluded: Basement 294 sq. ft, Hall 21 sq. ft, Entry 36 sq. ft, Walls: 126 sq. ft

Property summary

 **2** Floors

 **2** Bedrooms

 **1** Bathrooms

Scan captured on Sat, 28 Mar 2026 19:46:16 GMT

All dimensions are approximate. This plan is for marketing purposes only.



Room dimensions

Floor 1 Below grade

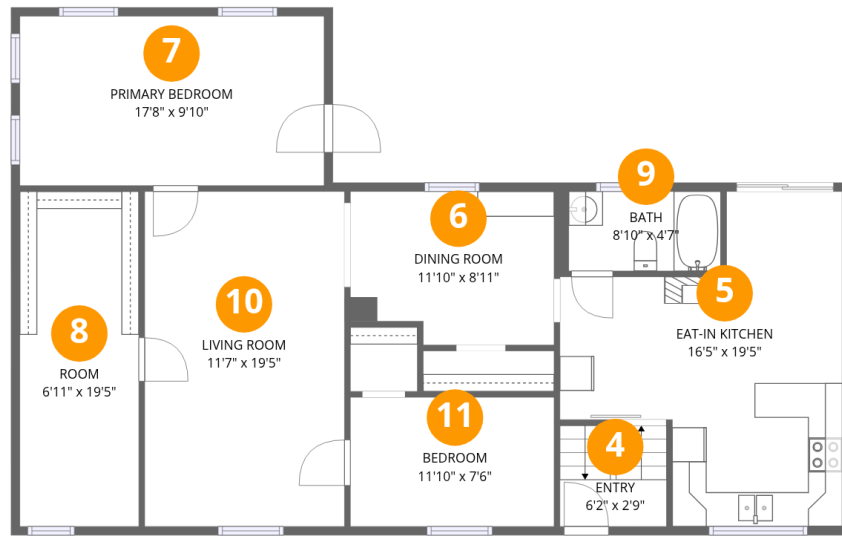
Total:170sqft

Excluded: 315sqft

#		Dimensions	sqft	Counted as living area
1	Room	17'9" x 9'1"	161 sq. ft	Yes
2	Hall	3'9" x 3'0"	11 sq. ft	No
3	Basement	23'9" x 19'5"	461 sq. ft	No

Home data report

4607 Dumoulin Ave, Lisle, IL, US



Room dimensions

Floor 2

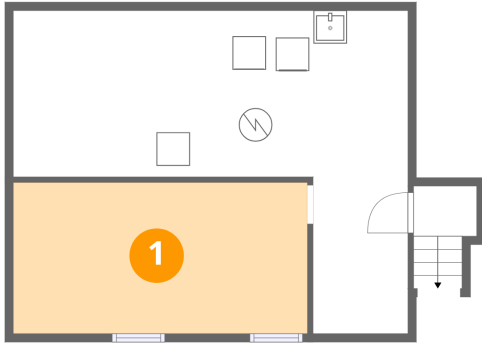
Total:1072sqft Excluded: 36sqft

#		Dimensions	sqft	Counted as living area
4	Entry	6'2" x 2'9"	17 sq. ft	No
5	Eat-in Kitchen	16'5" x 19'5"	319 sq. ft	Yes
6	Dining Room	11'10" x 8'11"	106 sq. ft	Yes
7	Primary Bedroom	17'8" x 9'10"	174 sq. ft	Yes
8	Room	6'11" x 19'5"	135 sq. ft	Yes
9	Bath	8'10" x 4'7"	41 sq. ft	Yes
10	Living Room	11'7" x 19'5"	224 sq. ft	Yes
11	Bedroom	11'10" x 7'6"	89 sq. ft	Yes

Scan captured on Sat, 28 Mar 2026 19:46:16 GMT

All dimensions are approximate. This plan is for marketing purposes only.

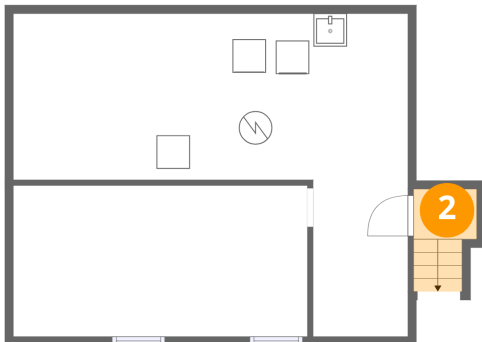
1 Floor 1 - Room



Dimensions: 17'9" x 9'1"
Area: 161 sq. ft
Counted as living area: No

Heated: Yes
Finished: Yes
Enclosed: Yes
Contiguous: No
Permitted: Yes
Wet space: No
Addition: No
Conversion: No

2 Floor 1 - Hall



Dimensions: 3'9" x 3'0"
Area: 11 sq. ft
Counted as living area: No

Heated: Yes
Finished: No
Enclosed: Yes
Contiguous: Yes
Permitted: Yes
Wet space: No
Addition: No
Conversion: No

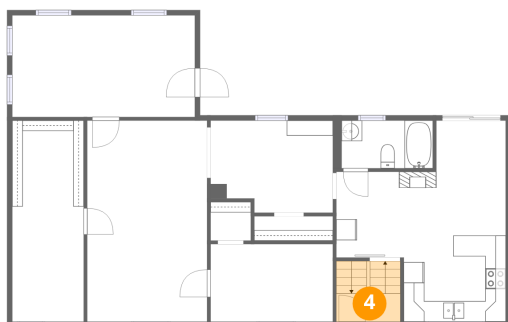
3 Floor 1 - Basement



Dimensions: 23'9" x 19'5"
Area: 461 sq. ft
Counted as living area: No

Heated: Yes
Finished: No
Enclosed: Yes
Contiguous: Yes
Permitted: Yes
Wet space: No
Addition: No
Conversion: No

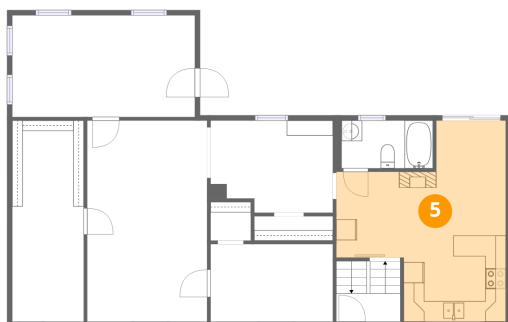
4 Floor 2 - Entry



Dimensions: 6'2" x 2'9"
Area: 17 sq. ft
Counted as living area: No

Heated: Yes
Finished: No
Enclosed: Yes
Contiguous: Yes
Permitted: Yes
Wet space: No
Addition: No
Conversion: No

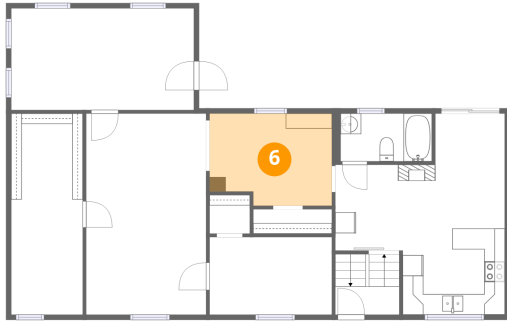
5 Floor 2 - Eat-in Kitchen



Dimensions: 16'5" x 19'5"
Area: 319 sq. ft
Counted as living area: Yes

Heated: Yes
Finished: Yes
Enclosed: Yes
Contiguous: Yes
Permitted: Yes
Wet space: No
Addition: No
Conversion: No

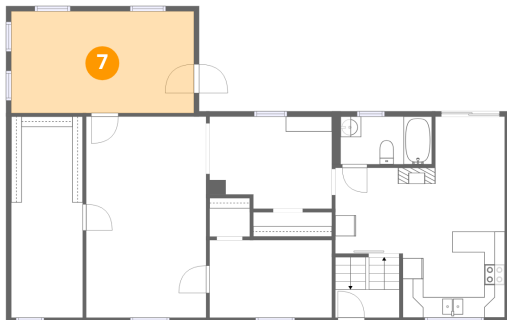
6 Floor 2 - Dining Room



Dimensions: 11'10" x 8'11"
Area: 106 sq. ft
Counted as living area: Yes

Heated: Yes
Finished: Yes
Enclosed: Yes
Contiguous: Yes
Permitted: Yes
Wet space: No
Addition: No
Conversion: No

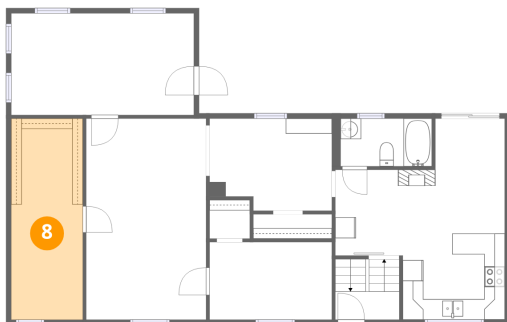
7 Floor 2 - Primary Bedroom



Dimensions: 17'8" x 9'10"
Area: 174 sq. ft
Counted as living area: Yes

Heated: Yes
Finished: Yes
Enclosed: Yes
Contiguous: Yes
Permitted: Yes
Wet space: No
Addition: No
Conversion: No

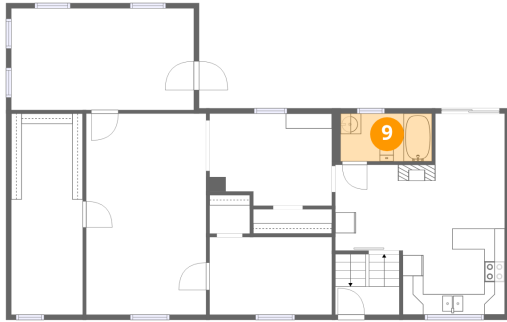
8 Floor 2 - Room



Dimensions: 6'11" x 19'5"
Area: 135 sq. ft
Counted as living area: Yes

Heated: Yes
Finished: Yes
Enclosed: Yes
Contiguous: Yes
Permitted: Yes
Wet space: No
Addition: No
Conversion: No

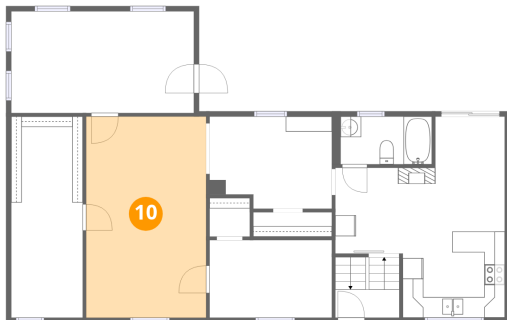
9 Floor 2 - Bath



Dimensions: 8'10" x 4'7"
Area: 41 sq. ft
Counted as living area: Yes

Heated: Yes
Finished: Yes
Enclosed: Yes
Contiguous: Yes
Permitted: Yes
Wet space: Yes
Addition: No
Conversion: No

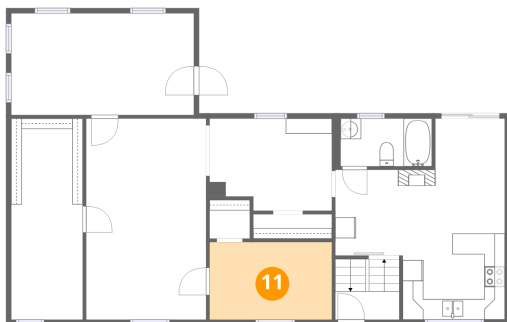
10 Floor 2 - Living Room



Dimensions: 11'7" x 19'5"
Area: 224 sq. ft
Counted as living area: Yes

Heated: Yes
Finished: Yes
Enclosed: Yes
Contiguous: Yes
Permitted: Yes
Wet space: No
Addition: No
Conversion: No

11 Floor 2 - Bedroom



Dimensions: 11'10" x 7'6"
Area: 89 sq. ft
Counted as living area: Yes

Heated: Yes
Finished: Yes
Enclosed: Yes
Contiguous: Yes
Permitted: Yes
Wet space: No
Addition: No
Conversion: No