

# Home data report

## 1608 161st Ave SE, Snohomish, WA, US



**Total Area: 2972 sq. ft**

1st Floor: 1469 sq. ft, 2nd Floor: 1503 sq. ft

Excluded: Garage 688 sq. ft, Stairwell 49 sq. ft, Walls: 227 sq. ft

### Property summary

 **2** Floors

 **5** Bedrooms

 **3** Bathrooms

 **1** Garages

Home data report

1608 161st Ave SE, Snohomish, WA, US



Room dimensions

Floor 1

Total:1469sqft

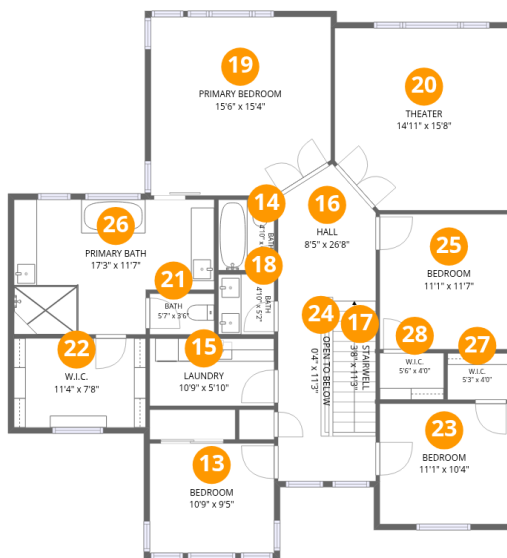
Excluded: 688sqft

#		Dimensions	sqft	Counted as living area
1	Kitchen	14'9" x 21'3"	291 sq. ft	Yes
2	W.I.C.	4'11" x 4'5"	22 sq. ft	Yes
3	Pantry	4'11" x 5'0"	25 sq. ft	Yes
4	Hall	10'8" x 7'9"	63 sq. ft	Yes
5	Living Room	17'4" x 19'0"	320 sq. ft	Yes
6	Bar	11'6" x 11'4"	132 sq. ft	Yes
7	Bath	5'9" x 7'7"	44 sq. ft	Yes
8	Dining Area	14'9" x 11'4"	167 sq. ft	Yes
9	Bedroom	11'0" x 13'8"	151 sq. ft	Yes
10	Garage	33'5" x 22'0"	688 sq. ft	No
11	Foyer	8'3" x 6'2"	80 sq. ft	Yes

Home data report

**1608 161st Ave SE, Snohomish, WA, US**

#		Dimensions	sqft	Counted as living area
12	Hall	8'3" x 18'6"	121 sq. ft	Yes



## Room dimensions

Floor 2

Total: 1503sqft Excluded: 49sqft

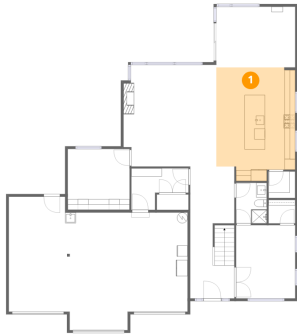
#		Dimensions	sqft	Counted as living area
13	Bedroom	10'9" x 9'5"	101 sq. ft	Yes
14	Bath	4'10" x 6'1"	29 sq. ft	Yes
15	Laundry	10'9" x 5'10"	62 sq. ft	Yes
16	Hall	8'5" x 26'8"	165 sq. ft	Yes
17	Stairwell	3'8" x 11'3"	45 sq. ft	No
18	Bath	4'10" x 5'2"	25 sq. ft	Yes
19	Primary Bedroom	15'6" x 15'4"	231 sq. ft	Yes
20	Theater	14'11" x 15'8"	226 sq. ft	Yes
21	Bath	5'7" x 3'6"	19 sq. ft	Yes
22	W.I.C.	11'4" x 7'8"	87 sq. ft	Yes
23	Bedroom	11'1" x 10'4"	115 sq. ft	Yes

Home data report

1608 161st Ave SE, Snohomish, WA, US

#		Dimensions	sqft	Counted as living area
24	Open To Below	0'4" x 11'3"	4 sq. ft	Yes
25	Bedroom	11'1" x 11'7"	128 sq. ft	Yes
26	Primary Bath	17'3" x 11'7"	178 sq. ft	Yes
27	W.I.C.	5'3" x 4'0"	21 sq. ft	Yes
28	W.I.C.	5'6" x 4'0"	22 sq. ft	Yes

## 1 Floor 1 - Kitchen



Dimensions: 14'9" x 21'3"  
Area: 291 sq. ft  
Counted as living area: Yes

Heated: Yes  
Finished: Yes  
Enclosed: Yes  
Contiguous: Yes  
Permitted: Yes  
Wet space: No  
Addition: No  
Conversion: No

## 2 Floor 1 - W.I.C.



Dimensions: 4'11" x 4'5"  
Area: 22 sq. ft  
Counted as living area: Yes

Heated: Yes  
Finished: Yes  
Enclosed: Yes  
Contiguous: Yes  
Permitted: Yes  
Wet space: No  
Addition: No  
Conversion: No

### 3 Floor 1 - Pantry



Dimensions: 4'11" x 5'0"  
Area: 25 sq. ft  
Counted as living area: Yes

Heated: Yes  
Finished: Yes  
Enclosed: Yes  
Contiguous: Yes  
Permitted: Yes  
Wet space: No  
Addition: No  
Conversion: No

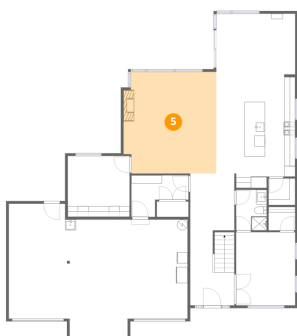
### 4 Floor 1 - Hall



Dimensions: 10'8" x 7'9"  
Area: 63 sq. ft  
Counted as living area: Yes

Heated: Yes  
Finished: Yes  
Enclosed: Yes  
Contiguous: Yes  
Permitted: Yes  
Wet space: No  
Addition: No  
Conversion: No

### 5 Floor 1 - Living Room



Dimensions: 17'4" x 19'0"  
Area: 320 sq. ft  
Counted as living area: Yes

Heated: Yes  
Finished: Yes  
Enclosed: Yes  
Contiguous: Yes  
Permitted: Yes  
Wet space: No  
Addition: No  
Conversion: No

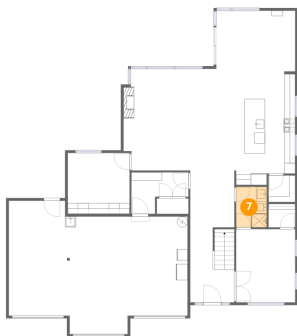
## 6 Floor 1 - Bar



Dimensions: 11'6" x 11'4"  
Area: 132 sq. ft  
Counted as living area: Yes

Heated: Yes  
Finished: Yes  
Enclosed: Yes  
Contiguous: Yes  
Permitted: Yes  
Wet space: No  
Addition: No  
Conversion: No

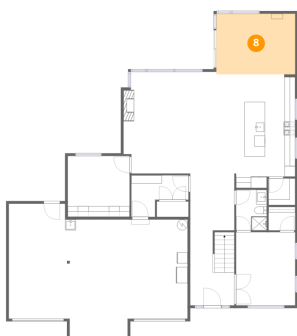
## 7 Floor 1 - Bath



Dimensions: 5'9" x 7'7"  
Area: 44 sq. ft  
Counted as living area: Yes

Heated: Yes  
Finished: Yes  
Enclosed: Yes  
Contiguous: Yes  
Permitted: Yes  
Wet space: Yes  
Addition: No  
Conversion: No

## 8 Floor 1 - Dining Area



Dimensions: 14'9" x 11'4"  
Area: 167 sq. ft  
Counted as living area: Yes

Heated: Yes  
Finished: Yes  
Enclosed: Yes  
Contiguous: Yes  
Permitted: Yes  
Wet space: No  
Addition: No  
Conversion: No

### 9 Floor 1 - Bedroom



Dimensions: 11'0" x 13'8"  
Area: 151 sq. ft  
Counted as living area: Yes

Heated: Yes  
Finished: Yes  
Enclosed: Yes  
Contiguous: Yes  
Permitted: Yes  
Wet space: No  
Addition: No  
Conversion: No

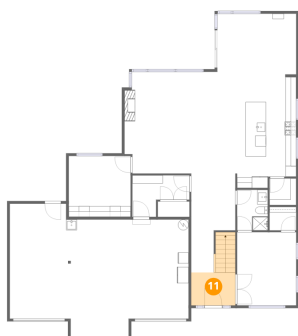
### 10 Floor 1 - Garage



Dimensions: 33'5" x 22'0"  
Area: 688 sq. ft  
Counted as living area: No

Heated: No  
Finished: No  
Enclosed: Yes  
Contiguous: Yes  
Permitted: Yes  
Wet space: No  
Addition: No  
Conversion: No

### 11 Floor 1 - Foyer



Dimensions: 8'3" x 6'2"  
Area: 80 sq. ft  
Counted as living area: Yes

Heated: Yes  
Finished: Yes  
Enclosed: Yes  
Contiguous: Yes  
Permitted: Yes  
Wet space: No  
Addition: No  
Conversion: No

## 12 Floor 1 - Hall



Dimensions: 8'3" x 18'6"  
Area: 121 sq. ft  
Counted as living area: Yes

Heated: Yes  
Finished: Yes  
Enclosed: Yes  
Contiguous: Yes  
Permitted: Yes  
Wet space: No  
Addition: No  
Conversion: No

## 13 Floor 2 - Bedroom



Dimensions: 10'9" x 9'5"  
Area: 101 sq. ft  
Counted as living area: Yes

Heated: Yes  
Finished: Yes  
Enclosed: Yes  
Contiguous: Yes  
Permitted: Yes  
Wet space: No  
Addition: No  
Conversion: No

## 14 Floor 2 - Bath



Dimensions: 4'10" x 6'1"  
Area: 29 sq. ft  
Counted as living area: Yes

Heated: Yes  
Finished: Yes  
Enclosed: Yes  
Contiguous: Yes  
Permitted: Yes  
Wet space: Yes  
Addition: No  
Conversion: No

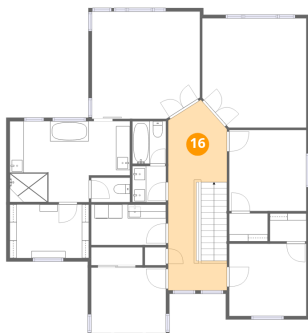
**15** Floor 2 - Laundry



Dimensions: 10'9" x 5'10"  
Area: 62 sq. ft  
Counted as living area: Yes

Heated: Yes  
Finished: Yes  
Enclosed: Yes  
Contiguous: Yes  
Permitted: Yes  
Wet space: No  
Addition: No  
Conversion: No

**16** Floor 2 - Hall



Dimensions: 8'5" x 26'8"  
Area: 165 sq. ft  
Counted as living area: Yes

Heated: Yes  
Finished: Yes  
Enclosed: Yes  
Contiguous: Yes  
Permitted: Yes  
Wet space: No  
Addition: No  
Conversion: No

**17** Floor 2 - Stairwell



Dimensions: 3'8" x 11'3"  
Area: 45 sq. ft  
Counted as living area: No

Heated: No  
Finished: No  
Enclosed: No  
Contiguous: Yes  
Permitted: No  
Wet space: No  
Addition: No  
Conversion: No

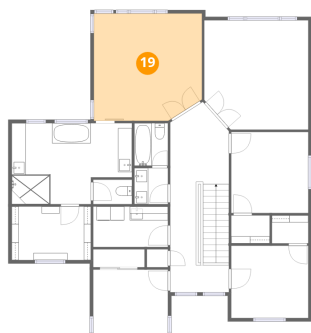
### 18 Floor 2 - Bath



Dimensions: 4'10" x 5'2"  
Area: 25 sq. ft  
Counted as living area: Yes

Heated: Yes  
Finished: Yes  
Enclosed: Yes  
Contiguous: Yes  
Permitted: Yes  
Wet space: Yes  
Addition: No  
Conversion: No

### 19 Floor 2 - Primary Bedroom



Dimensions: 15'6" x 15'4"  
Area: 231 sq. ft  
Counted as living area: Yes

Heated: Yes  
Finished: Yes  
Enclosed: Yes  
Contiguous: Yes  
Permitted: Yes  
Wet space: No  
Addition: No  
Conversion: No

### 20 Floor 2 - Theater



Dimensions: 14'11" x 15'8"  
Area: 226 sq. ft  
Counted as living area: Yes

Heated: Yes  
Finished: Yes  
Enclosed: Yes  
Contiguous: Yes  
Permitted: Yes  
Wet space: No  
Addition: No  
Conversion: No

### 21 Floor 2 - Bath



Dimensions: 5'7" x 3'6"  
Area: 19 sq. ft  
Counted as living area: Yes

Heated: Yes  
Finished: Yes  
Enclosed: Yes  
Contiguous: Yes  
Permitted: Yes  
Wet space: Yes  
Addition: No  
Conversion: No

### 22 Floor 2 - W.I.C.



Dimensions: 11'4" x 7'8"  
Area: 87 sq. ft  
Counted as living area: Yes

Heated: Yes  
Finished: Yes  
Enclosed: Yes  
Contiguous: Yes  
Permitted: Yes  
Wet space: No  
Addition: No  
Conversion: No

### 23 Floor 2 - Bedroom



Dimensions: 11'1" x 10'4"  
Area: 115 sq. ft  
Counted as living area: Yes

Heated: Yes  
Finished: Yes  
Enclosed: Yes  
Contiguous: Yes  
Permitted: Yes  
Wet space: No  
Addition: No  
Conversion: No

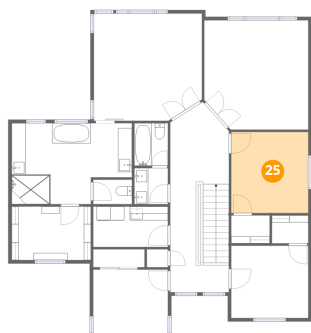
## 24 Floor 2 - Open To Below



Dimensions: 0'4" x 11'3"  
Area: 4 sq. ft  
Counted as living area: Yes

Heated: No  
Finished: No  
Enclosed: No  
Contiguous: Yes  
Permitted: No  
Wet space: No  
Addition: No  
Conversion: No

## 25 Floor 2 - Bedroom



Dimensions: 11'1" x 11'7"  
Area: 128 sq. ft  
Counted as living area: Yes

Heated: Yes  
Finished: Yes  
Enclosed: Yes  
Contiguous: Yes  
Permitted: Yes  
Wet space: No  
Addition: No  
Conversion: No

## 26 Floor 2 - Primary Bath



Dimensions: 17'3" x 11'7"  
Area: 178 sq. ft  
Counted as living area: Yes

Heated: Yes  
Finished: Yes  
Enclosed: Yes  
Contiguous: Yes  
Permitted: Yes  
Wet space: Yes  
Addition: No  
Conversion: No

**27** Floor 2 - W.I.C.

---



Dimensions: 5'3" x 4'0"  
Area: 21 sq. ft  
Counted as living area: Yes

Heated: Yes  
Finished: Yes  
Enclosed: Yes  
Contiguous: Yes  
Permitted: Yes  
Wet space: No  
Addition: No  
Conversion: No

**28** Floor 2 - W.I.C.

---



Dimensions: 5'6" x 4'0"  
Area: 22 sq. ft  
Counted as living area: Yes

Heated: Yes  
Finished: Yes  
Enclosed: Yes  
Contiguous: Yes  
Permitted: Yes  
Wet space: No  
Addition: No  
Conversion: No