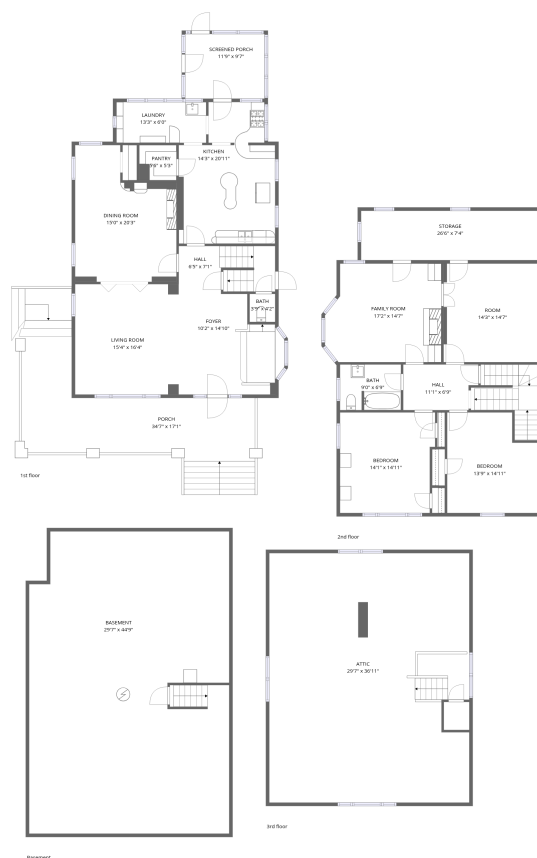


## Home data report

1429 Madison Avenue, Midtown, Memphis, Shelby County, Tennessee, United States, 38104



**Total Area: 2367 sq. ft**

Basement: 0 sq. ft, 1st Floor: 1239 sq. ft, 2nd Floor: 1108 sq. ft, 3rd Floor: 20 sq. ft

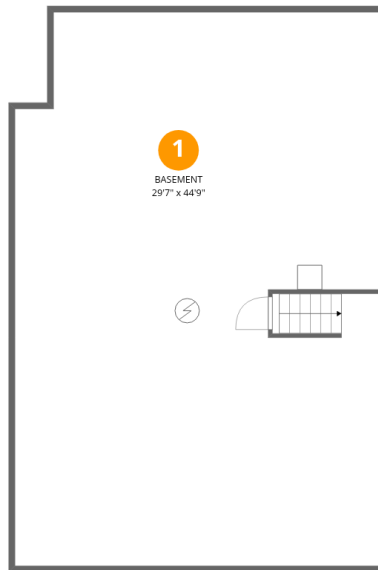
Excluded: Basement 1298 sq. ft, Screened porch 112 sq. ft, Porch 476 sq. ft, Storage 193 sq. ft, Attic 958 sq. ft, Low ceiling 114 sq. ft, Walls: 323 sq. ft

## Property summary



Home data report

1429 Madison Avenue, Midtown, Memphis, Shelby County, Tennessee, United States, 38104



### Room dimensions

Floor 1 Below grade

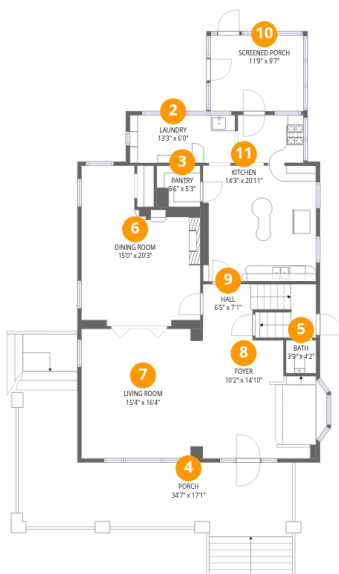
Total:0sqft

Excluded: 1298sqft

#		Dimensions	sqft	Counted as living area
1	Basement	29'7" x 44'9"	1323 sq. ft	No

## Home data report

1429 Madison Avenue, Midtown, Memphis, Shelby County, Tennessee, United States, 38104



## Room dimensions

Floor 2

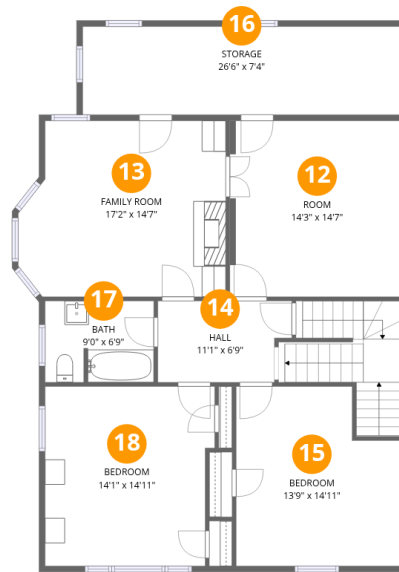
Total:1239sqft

Excluded: 588sqft

#		Dimensions	sqft	Counted as living area
2	Laundry	13'3" x 6'0"	80 sq. ft	Yes
3	Pantry	5'6" x 5'3"	29 sq. ft	Yes
4	Porch	34'7" x 17'1"	592 sq. ft	No
5	Bath	3'9" x 4'2"	16 sq. ft	Yes
6	Dining Room	15'0" x 20'3"	303 sq. ft	Yes
7	Living Room	15'4" x 16'4"	250 sq. ft	Yes
8	Foyer	10'2" x 14'10"	151 sq. ft	Yes
9	Hall	6'5" x 7'1"	45 sq. ft	Yes
10	Screened Porch	11'9" x 9'7"	112 sq. ft	No
11	Kitchen	14'3" x 20'11"	299 sq. ft	Yes

## Home data report

1429 Madison Avenue, Midtown, Memphis, Shelby County, Tennessee, United States, 38104



## Room dimensions

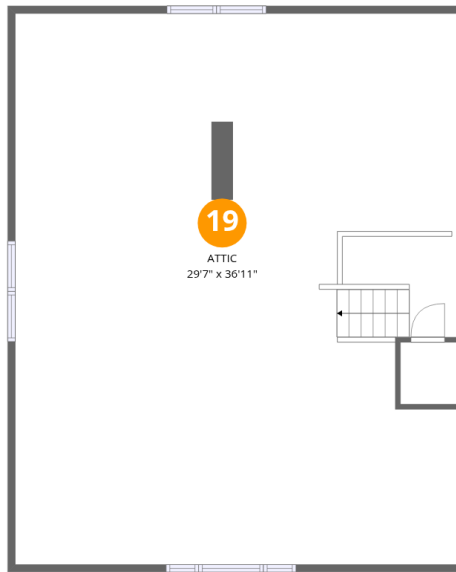
Floor 3

Total:1108sqft Excluded: 193sqft

#		Dimensions	sqft	Counted as living area
12	Room	14'3" x 14'7"	208 sq. ft	Yes
13	Family Room	17'2" x 14'7"	251 sq. ft	Yes
14	Hall	11'1" x 6'9"	75 sq. ft	Yes
15	Bedroom	13'9" x 14'11"	205 sq. ft	Yes
16	Storage	26'6" x 7'4"	193 sq. ft	No
17	Bath	9'0" x 6'9"	61 sq. ft	Yes
18	Bedroom	14'1" x 14'11"	209 sq. ft	Yes

Home data report

1429 Madison Avenue, Midtown, Memphis, Shelby County, Tennessee, United States, 38104



### Room dimensions

Floor 4

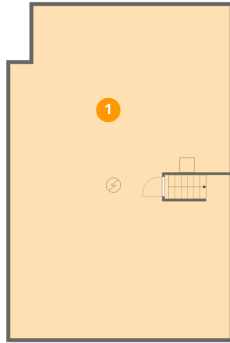
Total:20sqft

Excluded: 1072sqft

#		Dimensions	sqft	Counted as living area
19	Attic	29'7" x 36'11"	1092 sq. ft	No

1429 Madison Avenue, Midtown, Memphis, Shelby County,  
Tennessee, United States, 38104

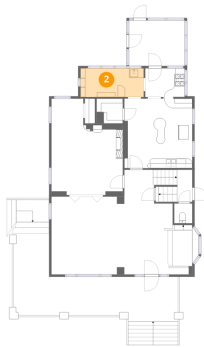
## 1 Floor 1 - Basement



Dimensions: 29'7" x 44'9"  
Area: 1323 sq. ft  
Counted as living area: No

Heated: Yes  
Finished: No  
Enclosed: Yes  
Contiguous: Yes  
Permitted: Yes  
Wet space: No  
Addition: No  
Conversion: No

## 2 Floor 2 - Laundry



Dimensions: 13'3" x 6'0"  
Area: 80 sq. ft  
Counted as living area: Yes

Heated: Yes  
Finished: Yes  
Enclosed: Yes  
Contiguous: Yes  
Permitted: Yes  
Wet space: No  
Addition: No  
Conversion: No

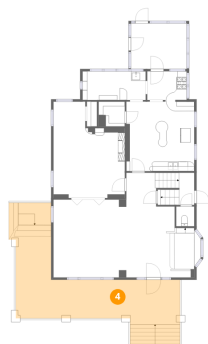
### 3 Floor 2 - Pantry



Dimensions: 5'6" x 5'3"  
Area: 29 sq. ft  
Counted as living area: Yes

Heated: Yes  
Finished: Yes  
Enclosed: Yes  
Contiguous: Yes  
Permitted: Yes  
Wet space: No  
Addition: No  
Conversion: No

### 4 Floor 2 - Porch



Dimensions: 34'7" x 17'1"  
Area: 592 sq. ft  
Counted as living area: No

Heated: No  
Finished: No  
Enclosed: No  
Contiguous: Yes  
Permitted: Yes  
Wet space: No  
Addition: No  
Conversion: No

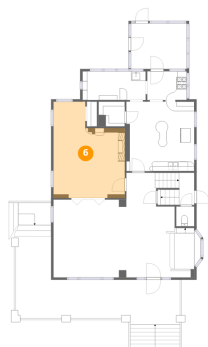
### 5 Floor 2 - Bath



Dimensions: 3'9" x 4'2"  
Area: 16 sq. ft  
Counted as living area: Yes

Heated: Yes  
Finished: Yes  
Enclosed: Yes  
Contiguous: Yes  
Permitted: Yes  
Wet space: Yes  
Addition: No  
Conversion: No

## 6 Floor 2 - Dining Room



Dimensions: 15'0" x 20'3"  
Area: 303 sq. ft  
Counted as living area: Yes

Heated: Yes  
Finished: Yes  
Enclosed: Yes  
Contiguous: Yes  
Permitted: Yes  
Wet space: No  
Addition: No  
Conversion: No

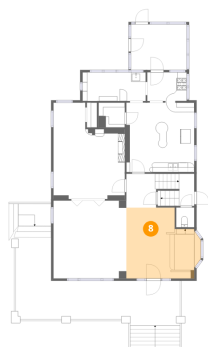
## 7 Floor 2 - Living Room



Dimensions: 15'4" x 16'4"  
Area: 250 sq. ft  
Counted as living area: Yes

Heated: Yes  
Finished: Yes  
Enclosed: Yes  
Contiguous: Yes  
Permitted: Yes  
Wet space: No  
Addition: No  
Conversion: No

## 8 Floor 2 - Foyer



Dimensions: 10'2" x 14'10"  
Area: 151 sq. ft  
Counted as living area: Yes

Heated: Yes  
Finished: Yes  
Enclosed: Yes  
Contiguous: Yes  
Permitted: Yes  
Wet space: No  
Addition: No  
Conversion: No

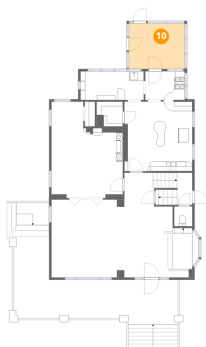
### 9 Floor 2 - Hall



Dimensions: 6'5" x 7'1"  
Area: 45 sq. ft  
Counted as living area: Yes

Heated: Yes  
Finished: Yes  
Enclosed: Yes  
Contiguous: Yes  
Permitted: Yes  
Wet space: No  
Addition: No  
Conversion: No

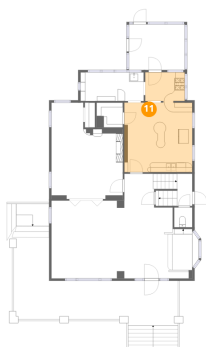
### 10 Floor 2 - Screened Porch



Dimensions: 11'9" x 9'7"  
Area: 112 sq. ft  
Counted as living area: No

Heated: No  
Finished: No  
Enclosed: No  
Contiguous: Yes  
Permitted: Yes  
Wet space: No  
Addition: No  
Conversion: No

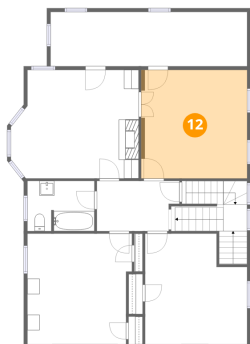
### 11 Floor 2 - Kitchen



Dimensions: 14'3" x 20'11"  
Area: 299 sq. ft  
Counted as living area: Yes

Heated: Yes  
Finished: Yes  
Enclosed: Yes  
Contiguous: Yes  
Permitted: Yes  
Wet space: No  
Addition: No  
Conversion: No

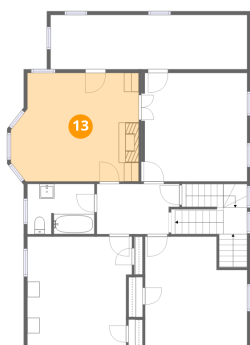
**12** Floor 3 - Room



Dimensions: 14'3" x 14'7"  
Area: 208 sq. ft  
Counted as living area: Yes

Heated: Yes  
Finished: Yes  
Enclosed: Yes  
Contiguous: Yes  
Permitted: Yes  
Wet space: No  
Addition: No  
Conversion: No

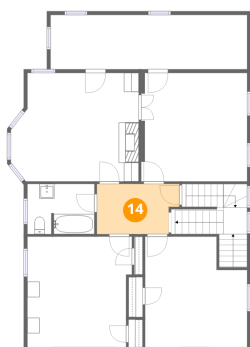
**13** Floor 3 - Family Room



Dimensions: 17'2" x 14'7"  
Area: 251 sq. ft  
Counted as living area: Yes

Heated: Yes  
Finished: Yes  
Enclosed: Yes  
Contiguous: Yes  
Permitted: Yes  
Wet space: No  
Addition: No  
Conversion: No

**14** Floor 3 - Hall

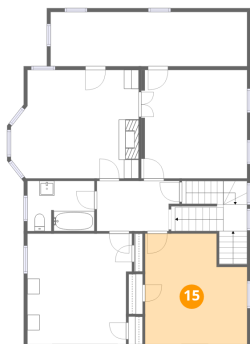


Dimensions: 11'1" x 6'9"  
Area: 75 sq. ft  
Counted as living area: Yes

Heated: Yes  
Finished: Yes  
Enclosed: Yes  
Contiguous: Yes  
Permitted: Yes  
Wet space: No  
Addition: No  
Conversion: No

1429 Madison Avenue, Midtown, Memphis, Shelby County, Tennessee, United States, 38104

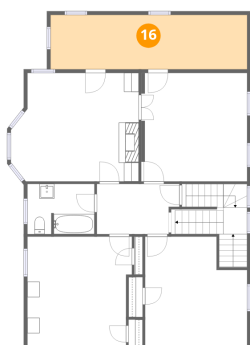
### 15 Floor 3 - Bedroom



Dimensions: 13'9" x 14'11"  
Area: 205 sq. ft  
Counted as living area: Yes

Heated: Yes  
Finished: Yes  
Enclosed: Yes  
Contiguous: Yes  
Permitted: Yes  
Wet space: No  
Addition: No  
Conversion: No

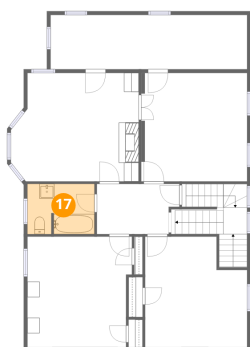
### 16 Floor 3 - Storage



Dimensions: 26'6" x 7'4"  
Area: 193 sq. ft  
Counted as living area: No

Heated: No  
Finished: No  
Enclosed: No  
Contiguous: Yes  
Permitted: Yes  
Wet space: No  
Addition: No  
Conversion: No

### 17 Floor 3 - Bath



Dimensions: 9'0" x 6'9"  
Area: 61 sq. ft  
Counted as living area: Yes

Heated: Yes  
Finished: Yes  
Enclosed: Yes  
Contiguous: Yes  
Permitted: Yes  
Wet space: Yes  
Addition: No  
Conversion: No

1429 Madison Avenue, Midtown, Memphis, Shelby County, Tennessee, United States, 38104

### 18 Floor 3 - Bedroom



Dimensions: 14'1" x 14'11"  
Area: 209 sq. ft  
Counted as living area: Yes

Heated: Yes  
Finished: Yes  
Enclosed: Yes  
Contiguous: Yes  
Permitted: Yes  
Wet space: No  
Addition: No  
Conversion: No

### 19 Floor 4 - Attic



Dimensions: 29'7" x 36'11"  
Area: 1092 sq. ft  
Counted as living area: No

Heated: No  
Finished: No  
Enclosed: Yes  
Contiguous: Yes  
Permitted: Yes  
Wet space: No  
Addition: No  
Conversion: No