

Home report


2601 Mallard Drive, Meadowlark, Cave Spring, Roanoke,
Roanoke County, Virginia, United States, 24018



Total Area: 3223 sq. ft
Floor 1: 1395 sq. ft, Floor 2: 1828 sq. ft
Excluded: Covered deck 166 sq. ft, Deck 922 sq. ft, Utility 99 sq. ft, Garage 557 sq. ft, Porch 175 sq. ft, Walls: 247 sq. ft

Property summary

 **2** Floors

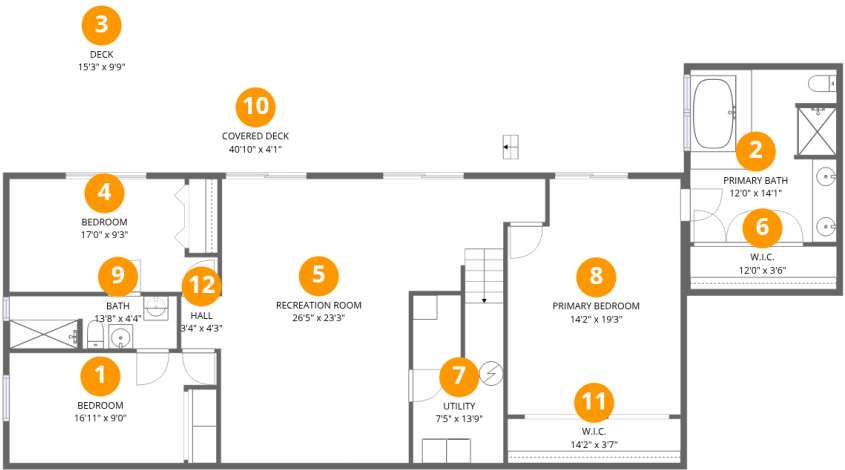
 **5** Bedrooms

 **4** Bathrooms

 **1** Garages

Home report

2601 Mallard Drive, Meadowlark, Cave Spring, Roanoke,
Roanoke County, Virginia, United States, 24018



Room dimensions

Floor 1 Total:1395sqft Excluded: 415sqft

#		Max Dimensions	sqft	Included
1	Bedroom	16'11" x 9'0"	136 sq. ft	Yes
2	Primary Bath	12'0" x 14'1"	167 sq. ft	Yes
3	Deck	15'3" x 9'9"	150 sq. ft	No
4	Bedroom	17'0" x 9'3"	140 sq. ft	Yes
5	Recreation Room	26'5" x 23'3"	440 sq. ft	Yes
6	W.I.C.	12'0" x 3'6"	42 sq. ft	Yes
7	Utility	7'5" x 13'9"	98 sq. ft	No
8	Primary Bedroom	14'2" x 19'3"	259 sq. ft	Yes
9	Bath	13'8" x 4'4"	58 sq. ft	Yes
10	Covered Deck	40'10" x 4'1"	166 sq. ft	No
11	W.I.C.	14'2" x 3'7"	51 sq. ft	Yes

Home report

2601 Mallard Drive, Meadowlark, Cave Spring, Roanoke,
Roanoke County, Virginia, United States, 24018

#		Max Dimensions	sqft	Included
12	Hall	3'4" x 4'3"	15 sq. ft	Yes

Home report

2601 Mallard Drive, Meadowlark, Cave Spring, Roanoke,
Roanoke County, Virginia, United States, 24018



Room dimensions

Floor 2 Total:1828sqft Excluded: 1504sqft

#		Max Dimensions	sqft	Included
13	Bath	10'3" x 4'5"	44 sq. ft	Yes
14	Bedroom	14'11" x 9'0"	123 sq. ft	Yes
15	Living Room	26'0" x 23'3"	611 sq. ft	Yes
16	Kitchen	13'7" x 16'4"	221 sq. ft	Yes
17	Deck	55'3" x 15'11"	772 sq. ft	No
18	Wet Bar	10'3" x 5'0"	51 sq. ft	Yes
19	Bath	7'5" x 4'1"	30 sq. ft	Yes
20	Garage	23'8" x 24'3"	557 sq. ft	No
21	Dining Area	13'7" x 6'11"	94 sq. ft	Yes
22	Family Room	23'4" x 23'10"	460 sq. ft	Yes
23	Bedroom	14'11" x 9'2"	124 sq. ft	Yes

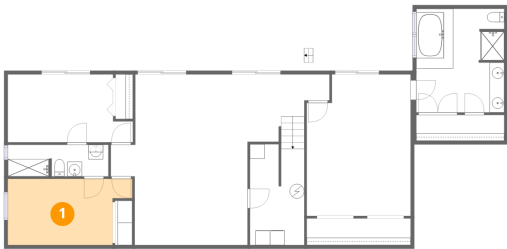
Home report

2601 Mallard Drive, Meadowlark, Cave Spring, Roanoke,
Roanoke County, Virginia, United States, 24018

#		Max Dimensions	sqft	Included
24	Porch	23'8" x 7'5"	175 sq. ft	No

2601 Mallard Drive, Meadowlark, Cave Spring, Roanoke,
Roanoke County, Virginia, United States, 24018

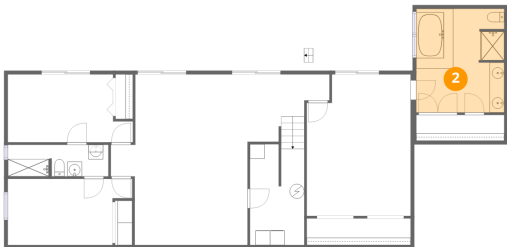
1 Floor 1 - Bedroom



Max Dimensions: 16'11" x 9'0"
Calculated Area: 136 sq. ft
Included: Yes

Heated: Yes
Finished: Yes
Enclosed: Yes
Contiguous: Yes
Permitted: Yes
Wet space: No
Addition: No
Conversion: No

2 Floor 1 - Primary Bath

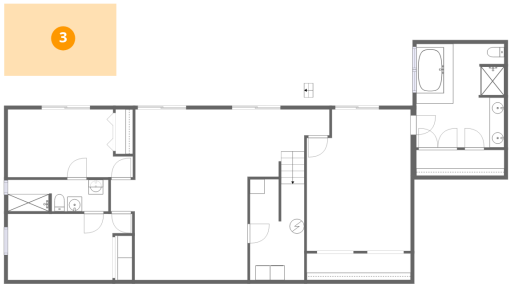


Max Dimensions: 12'0" x 14'1"
Calculated Area: 167 sq. ft
Included: Yes

Heated: Yes
Finished: Yes
Enclosed: Yes
Contiguous: Yes
Permitted: Yes
Wet space: Yes
Addition: No
Conversion: No

2601 Mallard Drive, Meadowlark, Cave Spring, Roanoke,
Roanoke County, Virginia, United States, 24018

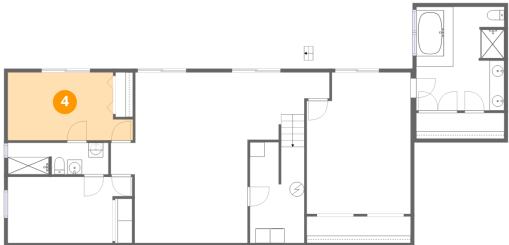
3 Floor 1 - Deck



Max Dimensions: 15'3" x 9'9"
Calculated Area: 150 sq. ft
Included: No

Heated: No
Finished: No
Enclosed: No
Contiguous: Yes
Permitted: Yes
Wet space: No
Addition: No
Conversion: No

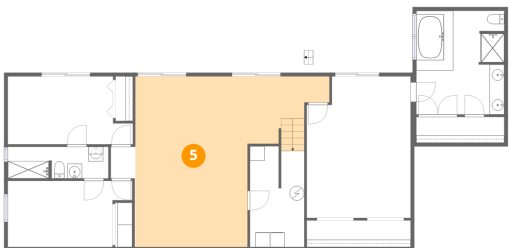
4 Floor 1 - Bedroom



Max Dimensions: 17'0" x 9'3"
Calculated Area: 140 sq. ft
Included: Yes

Heated: Yes
Finished: Yes
Enclosed: Yes
Contiguous: Yes
Permitted: Yes
Wet space: No
Addition: No
Conversion: No

5 Floor 1 - Recreation Room



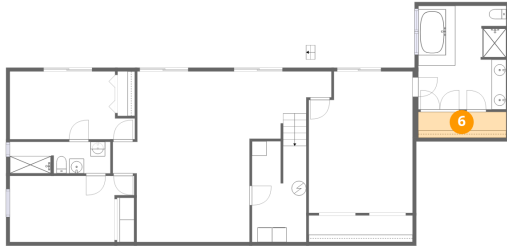
Max Dimensions: 26'5" x 23'3"
Calculated Area: 440 sq. ft
Included: Yes

Heated: Yes
Finished: Yes
Enclosed: Yes
Contiguous: Yes
Permitted: Yes
Wet space: No
Addition: No
Conversion: No

Home report

2601 Mallard Drive, Meadowlark, Cave Spring, Roanoke,
Roanoke County, Virginia, United States, 24018

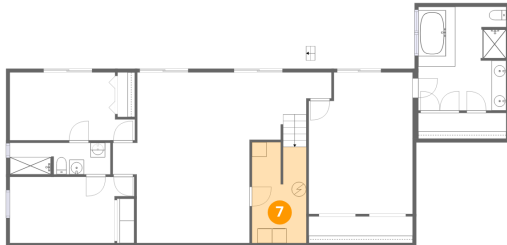
6 Floor 1 - W.I.C.



Max Dimensions: 12'0" x 3'6"
Calculated Area: 42 sq. ft
Included: Yes

Heated: Yes
Finished: Yes
Enclosed: Yes
Contiguous: Yes
Permitted: Yes
Wet space: No
Addition: No
Conversion: No

7 Floor 1 - Utility



Max Dimensions: 7'5" x 13'9"
Calculated Area: 98 sq. ft
Included: No

Heated: Yes
Finished: No
Enclosed: Yes
Contiguous: Yes
Permitted: Yes
Wet space: No
Addition: No
Conversion: No

8 Floor 1 - Primary Bedroom

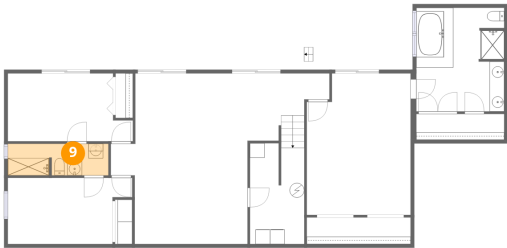


Max Dimensions: 14'2" x 19'3"
Calculated Area: 259 sq. ft
Included: Yes

Heated: Yes
Finished: Yes
Enclosed: Yes
Contiguous: Yes
Permitted: Yes
Wet space: No
Addition: No
Conversion: No

2601 Mallard Drive, Meadowlark, Cave Spring, Roanoke,
Roanoke County, Virginia, United States, 24018

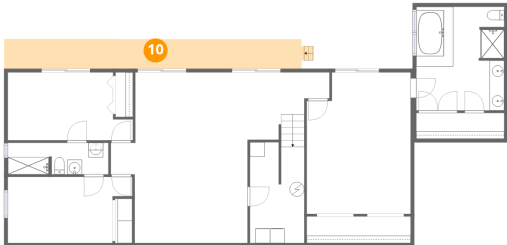
9 Floor 1 - Bath



Max Dimensions: 13'8" x 4'4"
Calculated Area: 58 sq. ft
Included: Yes

Heated: Yes
Finished: Yes
Enclosed: Yes
Contiguous: Yes
Permitted: Yes
Wet space: Yes
Addition: No
Conversion: No

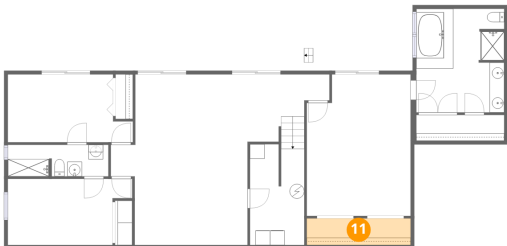
10 Floor 1 - Covered Deck



Max Dimensions: 40'10" x 4'1"
Calculated Area: 166 sq. ft
Included: No

Heated: No
Finished: No
Enclosed: No
Contiguous: Yes
Permitted: Yes
Wet space: No
Addition: No
Conversion: No

11 Floor 1 - W.I.C.

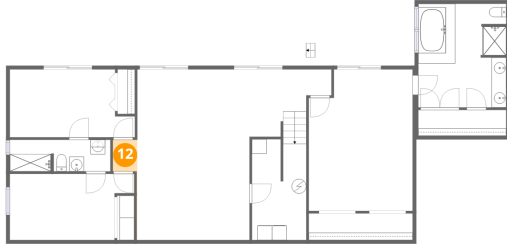


Max Dimensions: 14'2" x 3'7"
Calculated Area: 51 sq. ft
Included: Yes

Heated: Yes
Finished: Yes
Enclosed: Yes
Contiguous: Yes
Permitted: Yes
Wet space: No
Addition: No
Conversion: No

2601 Mallard Drive, Meadowlark, Cave Spring, Roanoke,
Roanoke County, Virginia, United States, 24018

12 Floor 1 - Hall



Max Dimensions: 3'4" x 4'3"
Calculated Area: 15 sq. ft
Included: Yes

Heated: Yes
Finished: Yes
Enclosed: Yes
Contiguous: Yes
Permitted: Yes
Wet space: No
Addition: No
Conversion: No

13 Floor 2 - Bath



Max Dimensions: 10'3" x 4'5"
Calculated Area: 44 sq. ft
Included: Yes

Heated: Yes
Finished: Yes
Enclosed: Yes
Contiguous: Yes
Permitted: Yes
Wet space: Yes
Addition: No
Conversion: No

14 Floor 2 - Bedroom



Max Dimensions: 14'11" x 9'0"
Calculated Area: 123 sq. ft
Included: Yes

Heated: Yes
Finished: Yes
Enclosed: Yes
Contiguous: Yes
Permitted: Yes
Wet space: No
Addition: No
Conversion: No

2601 Mallard Drive, Meadowlark, Cave Spring, Roanoke,
Roanoke County, Virginia, United States, 24018

15 Floor 2 - Living Room



Max Dimensions: 26'0" x 23'3"
Calculated Area: 611 sq. ft
Included: Yes

Heated: Yes
Finished: Yes
Enclosed: Yes
Contiguous: Yes
Permitted: Yes
Wet space: No
Addition: No
Conversion: No

16 Floor 2 - Kitchen



Max Dimensions: 13'7" x 16'4"
Calculated Area: 221 sq. ft
Included: Yes

Heated: Yes
Finished: Yes
Enclosed: Yes
Contiguous: Yes
Permitted: Yes
Wet space: No
Addition: No
Conversion: No

17 Floor 2 - Deck



Max Dimensions: 55'3" x 15'11"
Calculated Area: 772 sq. ft
Included: No

Heated: No
Finished: No
Enclosed: No
Contiguous: No
Permitted: Yes
Wet space: No
Addition: No
Conversion: No

Home report

2601 Mallard Drive, Meadowlark, Cave Spring, Roanoke,
Roanoke County, Virginia, United States, 24018

18 Floor 2 - Wet Bar



Max Dimensions: 10'3" x 5'0"
Calculated Area: 51 sq. ft
Included: Yes

Heated: Yes
Finished: Yes
Enclosed: Yes
Contiguous: Yes
Permitted: Yes
Wet space: No
Addition: No
Conversion: No

19 Floor 2 - Bath



Max Dimensions: 7'5" x 4'1"
Calculated Area: 30 sq. ft
Included: Yes

Heated: Yes
Finished: Yes
Enclosed: Yes
Contiguous: Yes
Permitted: Yes
Wet space: Yes
Addition: No
Conversion: No

20 Floor 2 - Garage



Max Dimensions: 23'8" x 24'3"
Calculated Area: 557 sq. ft
Included: No

Heated: No
Finished: No
Enclosed: Yes
Contiguous: Yes
Permitted: Yes
Wet space: No
Addition: No
Conversion: No

2601 Mallard Drive, Meadowlark, Cave Spring, Roanoke,
Roanoke County, Virginia, United States, 24018

21 Floor 2 - Dining Area



Max Dimensions: 13'7" x 6'11"
Calculated Area: 94 sq. ft
Included: Yes

Heated: Yes
Finished: Yes
Enclosed: Yes
Contiguous: Yes
Permitted: Yes
Wet space: No
Addition: No
Conversion: No

22 Floor 2 - Family Room



Max Dimensions: 23'4" x 23'10"
Calculated Area: 460 sq. ft
Included: Yes

Heated: Yes
Finished: Yes
Enclosed: Yes
Contiguous: Yes
Permitted: Yes
Wet space: No
Addition: No
Conversion: No

23 Floor 2 - Bedroom



Max Dimensions: 14'11" x 9'2"
Calculated Area: 124 sq. ft
Included: Yes

Heated: Yes
Finished: Yes
Enclosed: Yes
Contiguous: Yes
Permitted: Yes
Wet space: No
Addition: No
Conversion: No

2601 Mallard Drive, Meadowlark, Cave Spring, Roanoke,
Roanoke County, Virginia, United States, 24018

24 Floor 2 - Porch



Max Dimensions: 23'8" x 7'5"
Calculated Area: 175 sq. ft
Included: No

Heated: No
Finished: No
Enclosed: No
Contiguous: Yes
Permitted: Yes
Wet space: No
Addition: No
Conversion: No