

Home data report

5372 Fez Ct, Brooksville, Hernando County, Florida, United States, 34602




Total Area: 1739 sq. ft

1st Floor: 693 sq. ft, 2nd Floor: 1046 sq. ft

Excluded: Garage 410 sq. ft, Porch 61 sq. ft, Covered patio 97 sq. ft, Walls: 157 sq. ft

Property summary

 **2** Floors

 **4** Bedrooms

 **2** Bathrooms

Home data report

5372 Fez Ct, Brooksville, Hernando County, Florida, United States, 34602



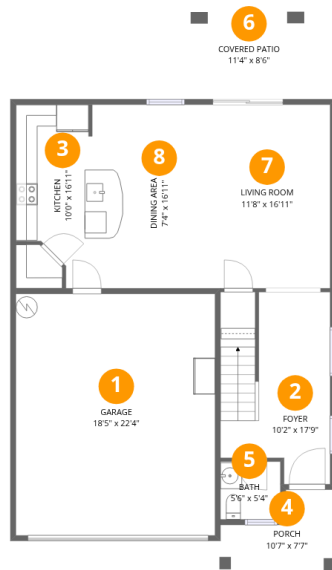
1
Half baths



1
Garages

Home data report

5372 Fez Ct, Brooksville, Hernando County, Florida, United States, 34602



Room dimensions

Floor 1

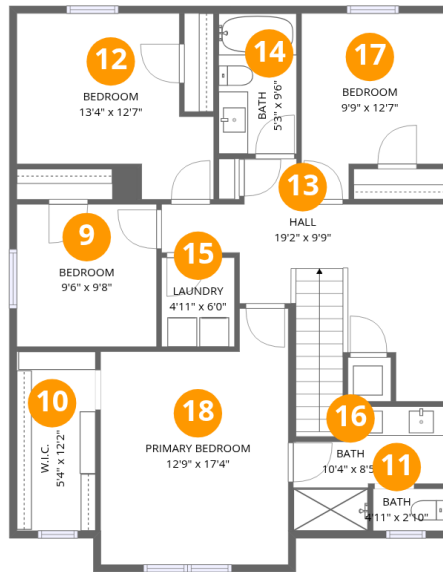
Total:693sqft

Excluded: 568sqft

#		Dimensions	sqft	Counted as living area
1	Garage	18'5" x 22'4"	410 sq. ft	No
2	Foyer	10'2" x 17'9"	180 sq. ft	Yes
3	Kitchen	10'0" x 16'11"	170 sq. ft	Yes
4	Porch	10'7" x 7'7"	81 sq. ft	No
5	Bath	5'6" x 5'4"	30 sq. ft	Yes
6	Covered Patio	11'4" x 8'6"	97 sq. ft	No
7	Living Room	11'8" x 16'11"	197 sq. ft	Yes
8	Dining Area	7'4" x 16'11"	125 sq. ft	Yes

Home data report

5372 Fez Ct, Brooksville, Hernando County, Florida, United States, 34602



Room dimensions

Floor 2

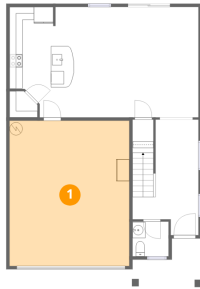
Total:1046sqft

Excluded: 0sqft

#		Dimensions	sqft	Counted as living area
9	Bedroom	9'6" x 9'8"	91 sq. ft	Yes
10	W.I.C.	5'4" x 12'2"	65 sq. ft	Yes
11	Bath	4'11" x 2'10"	14 sq. ft	Yes
12	Bedroom	13'4" x 12'7"	168 sq. ft	Yes
13	Hall	19'2" x 9'9"	187 sq. ft	Yes
14	Bath	5'3" x 9'6"	50 sq. ft	Yes
15	Laundry	4'11" x 6'0"	30 sq. ft	Yes
16	Bath	10'4" x 8'5"	87 sq. ft	Yes
17	Bedroom	9'9" x 12'7"	123 sq. ft	Yes
18	Primary Bedroom	12'9" x 17'4"	221 sq. ft	Yes

5372 Fez Ct, Brooksville, Hernando County, Florida, United States, 34602

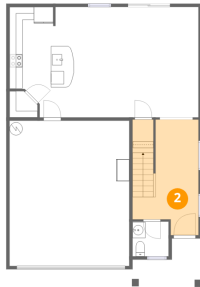
1 Floor 1 - Garage



Dimensions: 18'5" x 22'4"
Area: 410 sq. ft
Counted as living area: No

Heated: No
Finished: No
Enclosed: Yes
Contiguous: Yes
Permitted: Yes
Wet space: No
Addition: No
Conversion: No

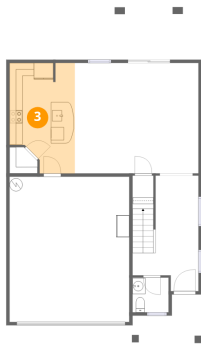
2 Floor 1 - Foyer



Dimensions: 10'2" x 17'9"
Area: 180 sq. ft
Counted as living area: Yes

Heated: Yes
Finished: Yes
Enclosed: Yes
Contiguous: Yes
Permitted: Yes
Wet space: No
Addition: No
Conversion: No

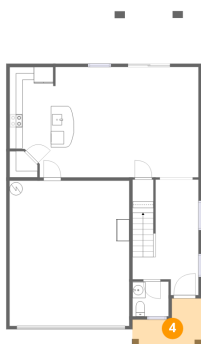
3 Floor 1 - Kitchen



Dimensions: 10'0" x 16'11"
Area: 170 sq. ft
Counted as living area: Yes

Heated: Yes
Finished: Yes
Enclosed: Yes
Contiguous: Yes
Permitted: Yes
Wet space: No
Addition: No
Conversion: No

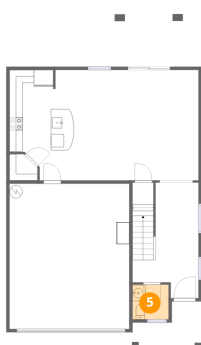
4 Floor 1 - Porch



Dimensions: 10'7" x 7'7"
Area: 81 sq. ft
Counted as living area: No

Heated: No
Finished: No
Enclosed: No
Contiguous: Yes
Permitted: Yes
Wet space: No
Addition: No
Conversion: No

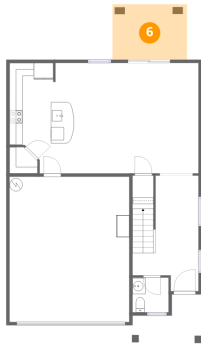
5 Floor 1 - Bath



Dimensions: 5'6" x 5'4"
Area: 30 sq. ft
Counted as living area: Yes

Heated: Yes
Finished: Yes
Enclosed: Yes
Contiguous: Yes
Permitted: Yes
Wet space: Yes
Addition: No
Conversion: No

6 Floor 1 - Covered Patio



Dimensions: 11'4" x 8'6"
Area: 97 sq. ft
Counted as living area: No

Heated: No
Finished: No
Enclosed: No
Contiguous: Yes
Permitted: Yes
Wet space: No
Addition: No
Conversion: No

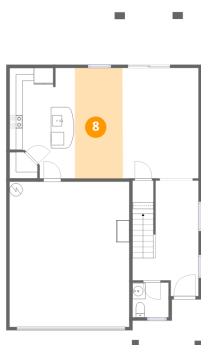
7 Floor 1 - Living Room



Dimensions: 11'8" x 16'11"
Area: 197 sq. ft
Counted as living area: Yes

Heated: Yes
Finished: Yes
Enclosed: Yes
Contiguous: Yes
Permitted: Yes
Wet space: No
Addition: No
Conversion: No

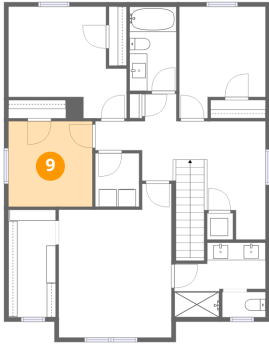
8 Floor 1 - Dining Area



Dimensions: 7'4" x 16'11"
Area: 125 sq. ft
Counted as living area: Yes

Heated: Yes
Finished: Yes
Enclosed: Yes
Contiguous: Yes
Permitted: Yes
Wet space: No
Addition: No
Conversion: No

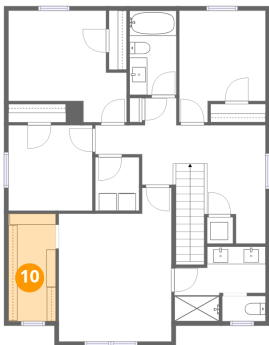
9 Floor 2 - Bedroom



Dimensions: 9'6" x 9'8"
Area: 91 sq. ft
Counted as living area: Yes

Heated: Yes
Finished: Yes
Enclosed: Yes
Contiguous: Yes
Permitted: Yes
Wet space: No
Addition: No
Conversion: No

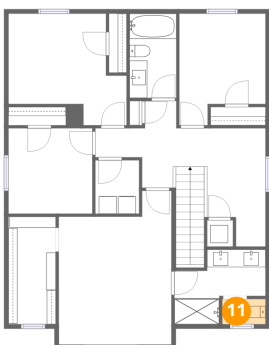
10 Floor 2 - W.I.C.



Dimensions: 5'4" x 12'2"
Area: 65 sq. ft
Counted as living area: Yes

Heated: Yes
Finished: Yes
Enclosed: Yes
Contiguous: Yes
Permitted: Yes
Wet space: No
Addition: No
Conversion: No

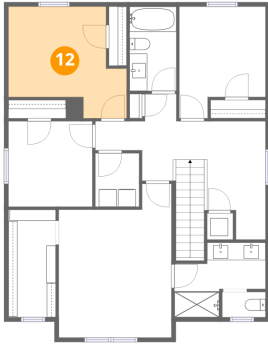
11 Floor 2 - Bath



Dimensions: 4'11" x 2'10"
Area: 14 sq. ft
Counted as living area: Yes

Heated: Yes
Finished: Yes
Enclosed: Yes
Contiguous: Yes
Permitted: Yes
Wet space: No
Addition: No
Conversion: No

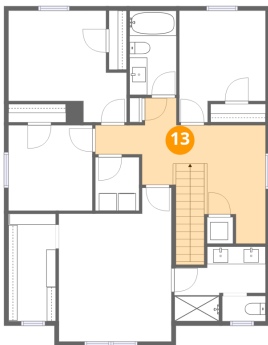
12 Floor 2 - Bedroom



Dimensions: 13'4" x 12'7"
Area: 168 sq. ft
Counted as living area: Yes

Heated: Yes
Finished: Yes
Enclosed: Yes
Contiguous: Yes
Permitted: Yes
Wet space: No
Addition: No
Conversion: No

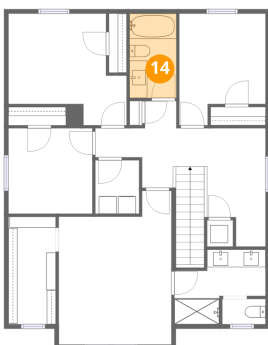
13 Floor 2 - Hall



Dimensions: 19'2" x 9'9"
Area: 187 sq. ft
Counted as living area: Yes

Heated: Yes
Finished: Yes
Enclosed: Yes
Contiguous: Yes
Permitted: Yes
Wet space: No
Addition: No
Conversion: No

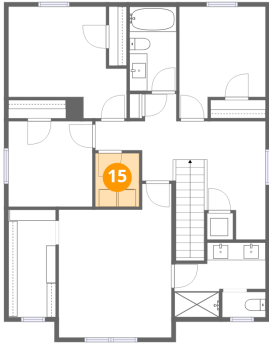
14 Floor 2 - Bath



Dimensions: 5'3" x 9'6"
Area: 50 sq. ft
Counted as living area: Yes

Heated: Yes
Finished: Yes
Enclosed: Yes
Contiguous: Yes
Permitted: Yes
Wet space: Yes
Addition: No
Conversion: No

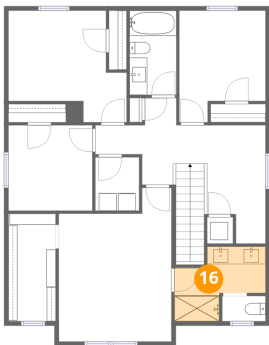
15 Floor 2 - Laundry



Dimensions: 4'11" x 6'0"
Area: 30 sq. ft
Counted as living area: Yes

Heated: Yes
Finished: Yes
Enclosed: Yes
Contiguous: Yes
Permitted: Yes
Wet space: No
Addition: No
Conversion: No

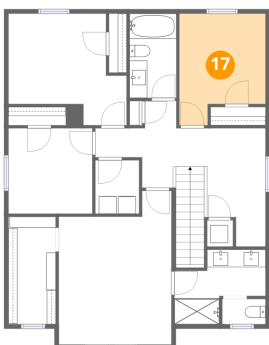
16 Floor 2 - Bath



Dimensions: 10'4" x 8'5"
Area: 87 sq. ft
Counted as living area: Yes

Heated: Yes
Finished: Yes
Enclosed: Yes
Contiguous: Yes
Permitted: Yes
Wet space: Yes
Addition: No
Conversion: No

17 Floor 2 - Bedroom



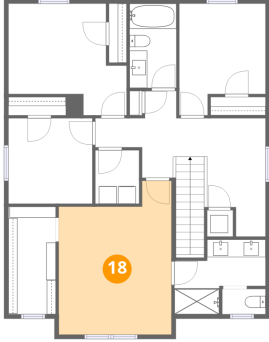
Dimensions: 9'9" x 12'7"
Area: 123 sq. ft
Counted as living area: Yes

Heated: Yes
Finished: Yes
Enclosed: Yes
Contiguous: Yes
Permitted: Yes
Wet space: No
Addition: No
Conversion: No

Home data report

5372 Fez Ct, Brooksville, Hernando County, Florida, United States, 34602

18 Floor 2 - Primary Bedroom



Dimensions: 12'9" x 17'4"
Area: 221 sq. ft
Counted as living area: Yes

Heated: Yes
Finished: Yes
Enclosed: Yes
Contiguous: Yes
Permitted: Yes
Wet space: No
Addition: No
Conversion: No