

Home data report

297 Labelle Street, Embrun, United Counties of Prescott and Russell, Ontario, Canada, K0A 1W1



Total Area: 1893 sq. ft

Basement: 255 sq. ft, 1st Floor: 749 sq. ft, 2nd Floor: 889 sq. ft

Excluded: Utility 417 sq. ft, Garage 198 sq. ft, Walls: 177 sq. ft

Property summary



Home data report

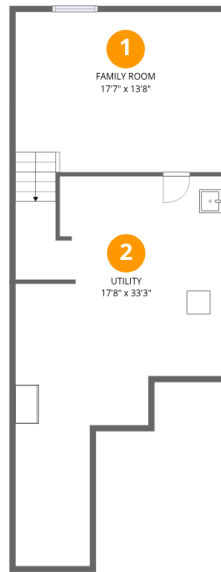
297 Labelle Street, Embrun, United Counties of Prescott and Russell, Ontario, Canada, K0A 1W1

 **1**
Half baths

 **1**
Garages

Home data report

297 Labelle Street, Embrun, United Counties of Prescott and Russell, Ontario, Canada, K0A 1W1



Room dimensions

Floor 1 Below grade

Total:255sqft

Excluded: 417sqft

#		Dimensions	sqft	Counted as living area
1	Family Room	17'7" x 13'8"	240 sq. ft	Yes
2	Utility	17'8" x 33'3"	587 sq. ft	No

Home data report

297 Labelle Street, Embrun, United Counties of Prescott and Russell, Ontario, Canada, K0A 1W1



Room dimensions

Floor 2

Total:749sqft Excluded: 198sqft

#		Dimensions	sqft	Counted as living area
3	Kitchen	17'8" x 16'0"	283 sq. ft	Yes
4	Foyer	6'10" x 16'3"	111 sq. ft	Yes
5	Pantry	5'4" x 5'8"	30 sq. ft	Yes
6	Bath	2'4" x 7'0"	16 sq. ft	Yes
7	Living Room	17'8" x 11'11"	210 sq. ft	Yes
8	Garage	10'4" x 21'11"	226 sq. ft	No
9	Dining Area	12'0" x 12'10"	154 sq. ft	Yes

Home data report

297 Labelle Street, Embrun, United Counties of Prescott and Russell, Ontario, Canada, K0A 1W1



Room dimensions

Floor 3

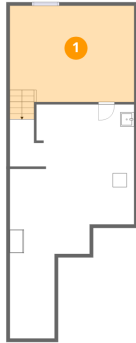
Total:889sqft

Excluded: 0sqft

#		Dimensions	sqft	Counted as living area
10	W.I.C.	5'9" x 7'8"	44 sq. ft	Yes
11	Bedroom	9'11" x 11'6"	133 sq. ft	Yes
12	Bedroom	9'0" x 10'0"	66 sq. ft	Yes
13	Bath	5'9" x 8'0"	46 sq. ft	Yes
14	Hall	7'3" x 22'1"	159 sq. ft	Yes
15	Bedroom	9'0" x 12'0"	77 sq. ft	Yes
16	Primary Bedroom	14'0" x 16'0"	201 sq. ft	Yes
17	Bath	4'3" x 11'10"	51 sq. ft	Yes
18	Laundry	5'10" x 7'9"	45 sq. ft	Yes

297 Labelle Street, Embrun, United Counties of Prescott and Russell, Ontario, Canada, K0A 1W1

1 Floor 1 - Family Room



Dimensions: 17'7" x 13'8"
Area: 240 sq. ft
Counted as living area: No

Heated: Yes
Finished: Yes
Enclosed: Yes
Contiguous: No
Permitted: Yes
Wet space: No
Addition: No
Conversion: No

2 Floor 1 - Utility



Dimensions: 17'8" x 33'3"
Area: 587 sq. ft
Counted as living area: No

Heated: Yes
Finished: No
Enclosed: Yes
Contiguous: Yes
Permitted: Yes
Wet space: No
Addition: No
Conversion: No

297 Labelle Street, Embrun, United Counties of Prescott and Russell, Ontario, Canada, K0A 1W1

3 Floor 2 - Kitchen



Dimensions: 17'8" x 16'0"
Area: 283 sq. ft
Counted as living area: Yes

Heated: Yes
Finished: Yes
Enclosed: Yes
Contiguous: Yes
Permitted: Yes
Wet space: No
Addition: No
Conversion: No

4 Floor 2 - Foyer



Dimensions: 6'10" x 16'3"
Area: 111 sq. ft
Counted as living area: Yes

Heated: Yes
Finished: Yes
Enclosed: Yes
Contiguous: Yes
Permitted: Yes
Wet space: No
Addition: No
Conversion: No

5 Floor 2 - Pantry



Dimensions: 5'4" x 5'8"
Area: 30 sq. ft
Counted as living area: Yes

Heated: Yes
Finished: Yes
Enclosed: Yes
Contiguous: Yes
Permitted: Yes
Wet space: No
Addition: No
Conversion: No

297 Labelle Street, Embrun, United Counties of Prescott and Russell, Ontario, Canada, K0A 1W1

6 Floor 2 - Bath



Dimensions: 2'4" x 7'0"
Area: 16 sq. ft
Counted as living area: Yes

Heated: Yes
Finished: Yes
Enclosed: Yes
Contiguous: Yes
Permitted: Yes
Wet space: No
Addition: No
Conversion: No

7 Floor 2 - Living Room



Dimensions: 17'8" x 11'11"
Area: 210 sq. ft
Counted as living area: Yes

Heated: Yes
Finished: Yes
Enclosed: Yes
Contiguous: Yes
Permitted: Yes
Wet space: No
Addition: No
Conversion: No

8 Floor 2 - Garage



Dimensions: 10'4" x 21'11"
Area: 226 sq. ft
Counted as living area: No

Heated: No
Finished: No
Enclosed: Yes
Contiguous: Yes
Permitted: Yes
Wet space: No
Addition: No
Conversion: No

297 Labelle Street, Embrun, United Counties of Prescott and Russell, Ontario, Canada, K0A 1W1

9 Floor 2 - Dining Area



Dimensions: 12'0" x 12'10"
Area: 154 sq. ft
Counted as living area: Yes

Heated: Yes
Finished: Yes
Enclosed: Yes
Contiguous: Yes
Permitted: Yes
Wet space: No
Addition: No
Conversion: No

10 Floor 3 - W.I.C.



Dimensions: 5'9" x 7'8"
Area: 44 sq. ft
Counted as living area: Yes

Heated: Yes
Finished: Yes
Enclosed: Yes
Contiguous: Yes
Permitted: Yes
Wet space: No
Addition: No
Conversion: No

11 Floor 3 - Bedroom



Dimensions: 9'11" x 11'6"
Area: 133 sq. ft
Counted as living area: Yes

Heated: Yes
Finished: Yes
Enclosed: Yes
Contiguous: Yes
Permitted: Yes
Wet space: No
Addition: No
Conversion: No

297 Labelle Street, Embrun, United Counties of Prescott and Russell, Ontario, Canada, K0A 1W1

12 Floor 3 - Bedroom



Dimensions: 9'0" x 10'0"
Area: 66 sq. ft
Counted as living area: Yes

Heated: Yes
Finished: Yes
Enclosed: Yes
Contiguous: Yes
Permitted: Yes
Wet space: No
Addition: No
Conversion: No

13 Floor 3 - Bath



Dimensions: 5'9" x 8'0"
Area: 46 sq. ft
Counted as living area: Yes

Heated: Yes
Finished: Yes
Enclosed: Yes
Contiguous: Yes
Permitted: Yes
Wet space: Yes
Addition: No
Conversion: No

14 Floor 3 - Hall



Dimensions: 7'3" x 22'1"
Area: 159 sq. ft
Counted as living area: Yes

Heated: Yes
Finished: Yes
Enclosed: Yes
Contiguous: Yes
Permitted: Yes
Wet space: No
Addition: No
Conversion: No

297 Labelle Street, Embrun, United Counties of Prescott and Russell, Ontario, Canada, K0A 1W1

15 Floor 3 - Bedroom



Dimensions: 9'0" x 12'0"
Area: 77 sq. ft
Counted as living area: Yes

Heated: Yes
Finished: Yes
Enclosed: Yes
Contiguous: Yes
Permitted: Yes
Wet space: No
Addition: No
Conversion: No

16 Floor 3 - Primary Bedroom



Dimensions: 14'0" x 16'0"
Area: 201 sq. ft
Counted as living area: Yes

Heated: Yes
Finished: Yes
Enclosed: Yes
Contiguous: Yes
Permitted: Yes
Wet space: No
Addition: No
Conversion: No

17 Floor 3 - Bath



Dimensions: 4'3" x 11'10"
Area: 51 sq. ft
Counted as living area: Yes

Heated: Yes
Finished: Yes
Enclosed: Yes
Contiguous: Yes
Permitted: Yes
Wet space: Yes
Addition: No
Conversion: No

297 Labelle Street, Embrun, United Counties of Prescott and Russell, Ontario, Canada, K0A 1W1

18 Floor 3 - Laundry



Dimensions: 5'10" x 7'9"
Area: 45 sq. ft
Counted as living area: Yes

Heated: Yes
Finished: Yes
Enclosed: Yes
Contiguous: Yes
Permitted: Yes
Wet space: No
Addition: No
Conversion: No