

Home data report

5 Hillside Drive, Clifton Springs, New York 14432, United States



Total Area: 1662 sq. ft

1st Floor: 546 sq. ft, 2nd Floor: 525 sq. ft, 3rd Floor: 591 sq. ft

Excluded: Deck 554 sq. ft, Garage 273 sq. ft, Porch 86 sq. ft, Walls: 176 sq. ft

Property summary



3 Floors



4 Bedrooms



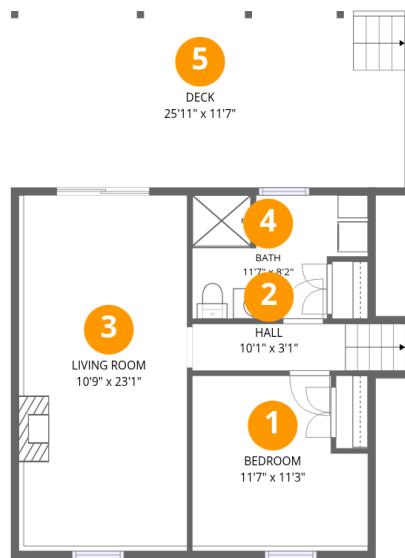
2 Bathrooms

Home data report

5 Hillside Drive, Clifton Springs, New York 14432, United States

 **1**
Half baths

 **1**
Garages



Room dimensions

Floor 1

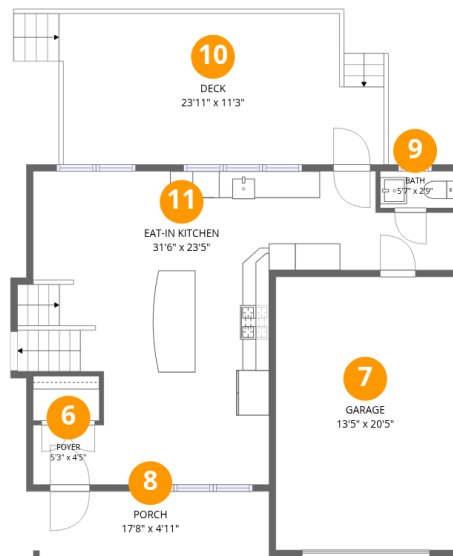
Total:546sqft

Excluded: 301sqft

#		Dimensions	sqft	Counted as living area
1	Bedroom	11'7" x 11'3"	121 sq. ft	Yes
2	Hall	10'1" x 3'1"	43 sq. ft	Yes
3	Living Room	10'9" x 23'1"	260 sq. ft	Yes
4	Bath	11'7" x 8'2"	82 sq. ft	Yes
5	Deck	25'11" x 11'7"	301 sq. ft	No

Home data report

5 Hillside Drive, Clifton Springs, New York 14432, United States



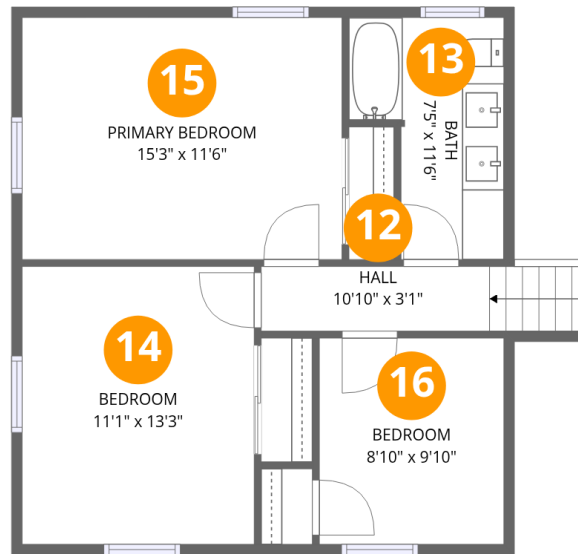
Room dimensions

Floor 2

Total:525sqft

Excluded: 612sqft

#		Dimensions	sqft	Counted as living area
6	Foyer	5'3" x 4'5"	24 sq. ft	Yes
7	Garage	13'5" x 20'5"	273 sq. ft	No
8	Porch	17'8" x 4'11"	86 sq. ft	No
9	Bath	5'7" x 2'9"	15 sq. ft	Yes
10	Deck	23'11" x 11'3"	253 sq. ft	No
11	Eat-in Kitchen	31'6" x 23'5"	461 sq. ft	Yes



Room dimensions

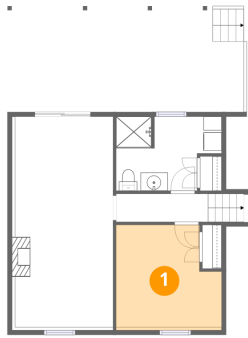
Floor 3

Total:591sqft

Excluded: 0sqft

#		Dimensions	sqft	Counted as living area
12	Hall	10'10" x 3'1"	49 sq. ft	Yes
13	Bath	7'5" x 11'6"	69 sq. ft	Yes
14	Bedroom	11'1" x 13'3"	147 sq. ft	Yes
15	Primary Bedroom	15'3" x 11'6"	176 sq. ft	Yes
16	Bedroom	8'10" x 9'10"	87 sq. ft	Yes

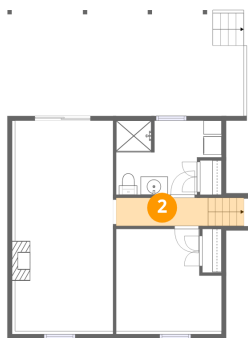
1 Floor 1 - Bedroom



Dimensions: 11'7" x 11'3"
Area: 121 sq. ft
Counted as living area: Yes

Heated: Yes
Finished: Yes
Enclosed: Yes
Contiguous: Yes
Permitted: Yes
Wet space: No
Addition: No
Conversion: No

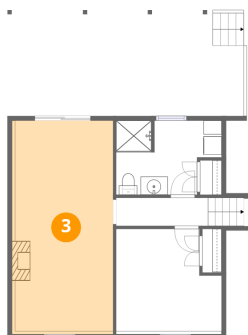
2 Floor 1 - Hall



Dimensions: 10'1" x 3'1"
Area: 43 sq. ft
Counted as living area: Yes

Heated: Yes
Finished: Yes
Enclosed: Yes
Contiguous: Yes
Permitted: Yes
Wet space: No
Addition: No
Conversion: No

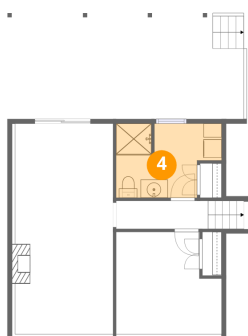
3 Floor 1 - Living Room



Dimensions: 10'9" x 23'1"
Area: 260 sq. ft
Counted as living area: Yes

Heated: Yes
Finished: Yes
Enclosed: Yes
Contiguous: Yes
Permitted: Yes
Wet space: No
Addition: No
Conversion: No

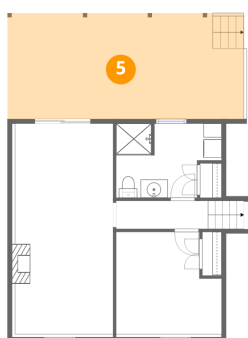
4 Floor 1 - Bath



Dimensions: 11'7" x 8'2"
Area: 82 sq. ft
Counted as living area: Yes

Heated: Yes
Finished: Yes
Enclosed: Yes
Contiguous: Yes
Permitted: Yes
Wet space: Yes
Addition: No
Conversion: No

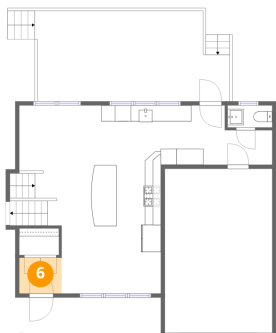
5 Floor 1 - Deck



Dimensions: 25'11" x 11'7"
Area: 301 sq. ft
Counted as living area: No

Heated: No
Finished: No
Enclosed: No
Contiguous: Yes
Permitted: Yes
Wet space: No
Addition: No
Conversion: No

6 Floor 2 - Foyer



Dimensions: 5'3" x 4'5"
Area: 24 sq. ft
Counted as living area: Yes

Heated: Yes
Finished: Yes
Enclosed: Yes
Contiguous: Yes
Permitted: Yes
Wet space: No
Addition: No
Conversion: No

7 Floor 2 - Garage



Dimensions: 13'5" x 20'5"
Area: 273 sq. ft
Counted as living area: No

Heated: No
Finished: No
Enclosed: Yes
Contiguous: Yes
Permitted: Yes
Wet space: No
Addition: No
Conversion: No

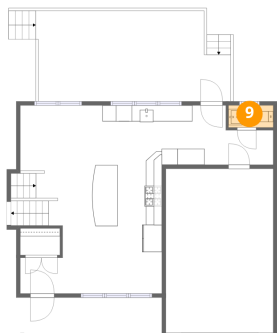
8 Floor 2 - Porch



Dimensions: 17'8" x 4'11"
Area: 86 sq. ft
Counted as living area: No

Heated: No
Finished: No
Enclosed: No
Contiguous: Yes
Permitted: Yes
Wet space: No
Addition: No
Conversion: No

9 Floor 2 - Bath



Dimensions: 5'7" x 2'9"
Area: 15 sq. ft
Counted as living area: Yes

Heated: Yes
Finished: Yes
Enclosed: Yes
Contiguous: Yes
Permitted: Yes
Wet space: Yes
Addition: No
Conversion: No

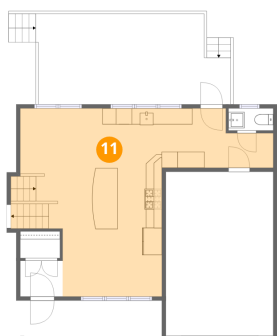
10 Floor 2 - Deck



Dimensions: 23'11" x 11'3"
Area: 253 sq. ft
Counted as living area: No

Heated: No
Finished: No
Enclosed: No
Contiguous: Yes
Permitted: Yes
Wet space: No
Addition: No
Conversion: No

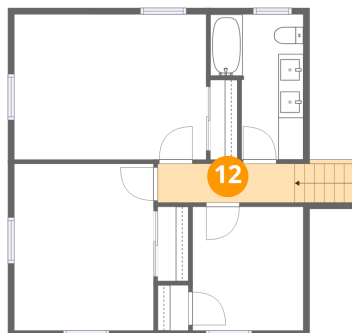
11 Floor 2 - Eat-in Kitchen



Dimensions: 31'6" x 23'5"
Area: 461 sq. ft
Counted as living area: Yes

Heated: Yes
Finished: Yes
Enclosed: Yes
Contiguous: Yes
Permitted: Yes
Wet space: No
Addition: No
Conversion: No

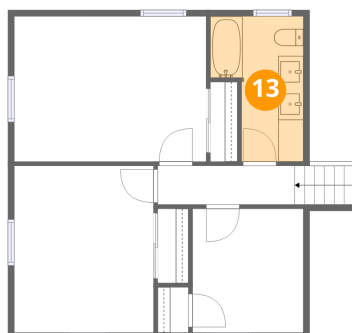
12 Floor 3 - Hall



Dimensions: 10'10" x 3'1"
Area: 49 sq. ft
Counted as living area: Yes

Heated: Yes
Finished: Yes
Enclosed: Yes
Contiguous: Yes
Permitted: Yes
Wet space: No
Addition: No
Conversion: No

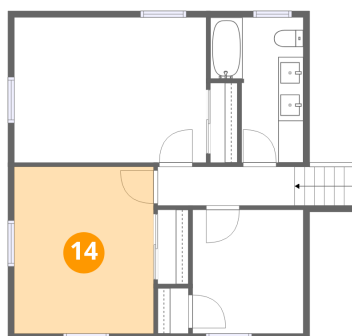
13 Floor 3 - Bath



Dimensions: 7'5" x 11'6"
Area: 69 sq. ft
Counted as living area: Yes

Heated: Yes
Finished: Yes
Enclosed: Yes
Contiguous: Yes
Permitted: Yes
Wet space: Yes
Addition: No
Conversion: No

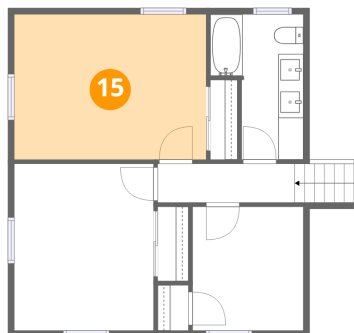
14 Floor 3 - Bedroom



Dimensions: 11'1" x 13'3"
Area: 147 sq. ft
Counted as living area: Yes

Heated: Yes
Finished: Yes
Enclosed: Yes
Contiguous: Yes
Permitted: Yes
Wet space: No
Addition: No
Conversion: No

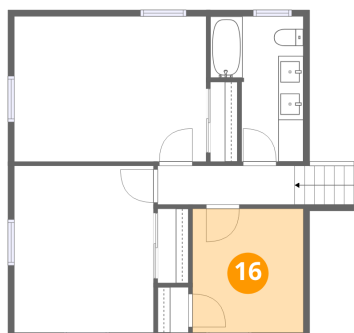
15 Floor 3 - Primary Bedroom



Dimensions: 15'3" x 11'6"
Area: 176 sq. ft
Counted as living area: Yes

Heated: Yes
Finished: Yes
Enclosed: Yes
Contiguous: Yes
Permitted: Yes
Wet space: No
Addition: No
Conversion: No

16 Floor 3 - Bedroom



Dimensions: 8'10" x 9'10"
Area: 87 sq. ft
Counted as living area: Yes

Heated: Yes
Finished: Yes
Enclosed: Yes
Contiguous: Yes
Permitted: Yes
Wet space: No
Addition: No
Conversion: No