

# Home data report

## 1749 Maple Ln, Benton Harbor, MI, US



**Total Area: 2960 sq. ft**

1st Floor: 753 sq. ft, 2nd Floor: 1422 sq. ft, 3rd Floor: 785 sq. ft

Excluded: Walls: 219 sq. ft

### Property summary

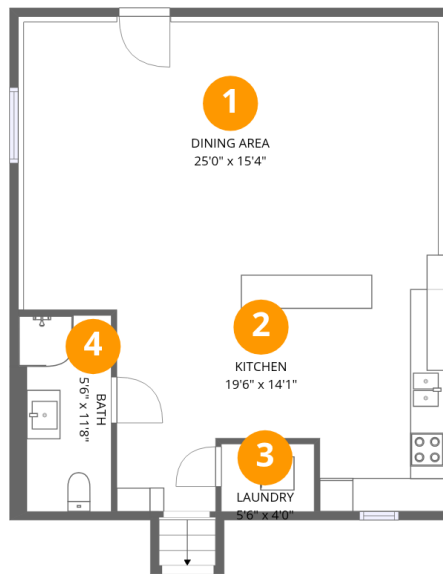
 **3** Floors

 **4** Bedrooms

 **2** Bathrooms

# Home data report

## 1749 Maple Ln, Benton Harbor, MI, US



### Room dimensions

Floor 1

Total: 753 sqft Excluded: 0 sqft

#		Dimensions	sqft	Counted as living area
1	Dining Area	25'0" x 15'4"	384 sq. ft	Yes
2	Kitchen	19'6" x 14'1"	274 sq. ft	Yes
3	Laundry	5'6" x 4'0"	22 sq. ft	Yes
4	Bath	5'6" x 11'8"	64 sq. ft	Yes

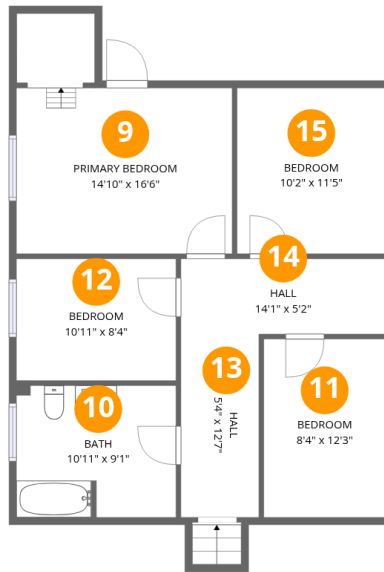


## Room dimensions

Floor 2

Total:1422sqft Excluded: 0sqft

#		Dimensions	sqft	Counted as living area
5	Foyer	7'6" x 5'6"	41 sq. ft	Yes
6	Billiard Room	24'7" x 17'0"	418 sq. ft	Yes
7	Hall	16'10" x 10'1"	170 sq. ft	Yes
8	Living Room	24'7" x 31'3"	770 sq. ft	Yes



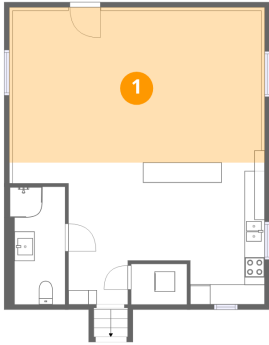
## Room dimensions

Floor 3

Total:785sqft Excluded: 0sqft

#		Dimensions	sqft	Counted as living area
9	Primary Bedroom	14'10" x 16'6"	244 sq. ft	Yes
10	Bath	10'11" x 9'1"	99 sq. ft	Yes
11	Bedroom	8'4" x 12'3"	102 sq. ft	Yes
12	Bedroom	10'11" x 8'4"	92 sq. ft	Yes
13	Hall	5'4" x 12'7"	67 sq. ft	Yes
14	Hall	14'1" x 5'2"	73 sq. ft	Yes
15	Bedroom	10'2" x 11'5"	116 sq. ft	Yes

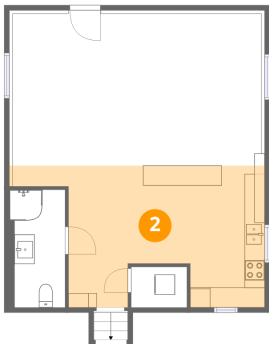
## 1 Floor 1 - Dining Area



Dimensions: 25'0" x 15'4"  
Area: 384 sq. ft  
Counted as living area: Yes

Heated: Yes  
Finished: Yes  
Enclosed: Yes  
Contiguous: Yes  
Permitted: Yes  
Wet space: No  
Addition: No  
Conversion: No

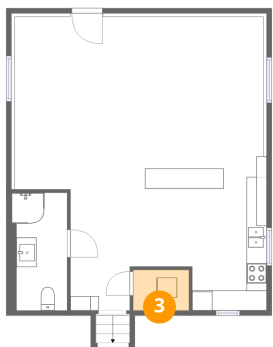
## 2 Floor 1 - Kitchen



Dimensions: 19'6" x 14'1"  
Area: 274 sq. ft  
Counted as living area: Yes

Heated: Yes  
Finished: Yes  
Enclosed: Yes  
Contiguous: Yes  
Permitted: Yes  
Wet space: No  
Addition: No  
Conversion: No

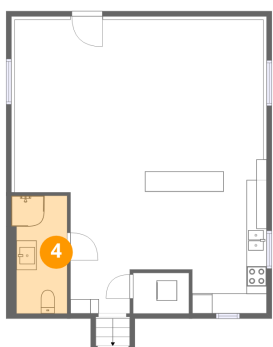
### 3 Floor 1 - Laundry



Dimensions: 5'6" x 4'0"  
Area: 22 sq. ft  
Counted as living area: Yes

Heated: Yes  
Finished: Yes  
Enclosed: Yes  
Contiguous: Yes  
Permitted: Yes  
Wet space: No  
Addition: No  
Conversion: No

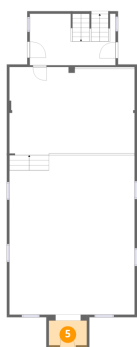
### 4 Floor 1 - Bath



Dimensions: 5'6" x 11'8"  
Area: 64 sq. ft  
Counted as living area: Yes

Heated: Yes  
Finished: Yes  
Enclosed: Yes  
Contiguous: Yes  
Permitted: Yes  
Wet space: Yes  
Addition: No  
Conversion: No

### 5 Floor 2 - Foyer



Dimensions: 7'6" x 5'6"  
Area: 41 sq. ft  
Counted as living area: Yes

Heated: Yes  
Finished: Yes  
Enclosed: Yes  
Contiguous: Yes  
Permitted: Yes  
Wet space: No  
Addition: No  
Conversion: No

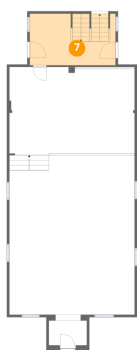
## 6 Floor 2 - Billiard Room



Dimensions: 24'7" x 17'0"  
Area: 418 sq. ft  
Counted as living area: Yes

Heated: Yes  
Finished: Yes  
Enclosed: Yes  
Contiguous: Yes  
Permitted: Yes  
Wet space: No  
Addition: No  
Conversion: No

## 7 Floor 2 - Hall



Dimensions: 16'10" x 10'1"  
Area: 170 sq. ft  
Counted as living area: Yes

Heated: Yes  
Finished: Yes  
Enclosed: Yes  
Contiguous: Yes  
Permitted: Yes  
Wet space: No  
Addition: No  
Conversion: No

## 8 Floor 2 - Living Room



Dimensions: 24'7" x 31'3"  
Area: 770 sq. ft  
Counted as living area: Yes

Heated: Yes  
Finished: Yes  
Enclosed: Yes  
Contiguous: Yes  
Permitted: Yes  
Wet space: No  
Addition: No  
Conversion: No

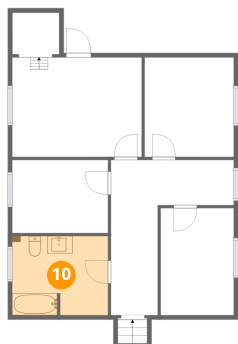
### 9 Floor 3 - Primary Bedroom



Dimensions: 14'10" x 16'6"  
Area: 244 sq. ft  
Counted as living area: Yes

Heated: Yes  
Finished: Yes  
Enclosed: Yes  
Contiguous: Yes  
Permitted: Yes  
Wet space: No  
Addition: No  
Conversion: No

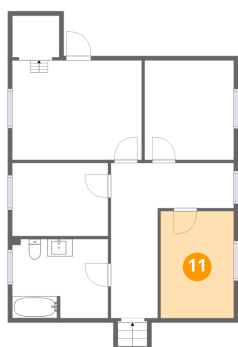
### 10 Floor 3 - Bath



Dimensions: 10'11" x 9'1"  
Area: 99 sq. ft  
Counted as living area: Yes

Heated: Yes  
Finished: Yes  
Enclosed: Yes  
Contiguous: Yes  
Permitted: Yes  
Wet space: Yes  
Addition: No  
Conversion: No

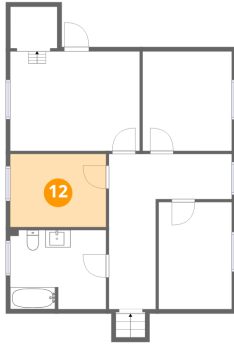
### 11 Floor 3 - Bedroom



Dimensions: 8'4" x 12'3"  
Area: 102 sq. ft  
Counted as living area: Yes

Heated: Yes  
Finished: Yes  
Enclosed: Yes  
Contiguous: Yes  
Permitted: Yes  
Wet space: No  
Addition: No  
Conversion: No

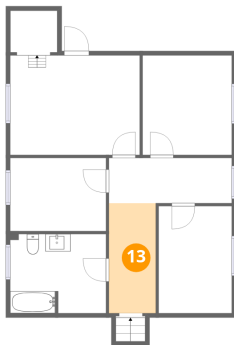
**12** Floor 3 - Bedroom



Dimensions: 10'11" x 8'4"  
Area: 92 sq. ft  
Counted as living area: Yes

Heated: Yes  
Finished: Yes  
Enclosed: Yes  
Contiguous: Yes  
Permitted: Yes  
Wet space: No  
Addition: No  
Conversion: No

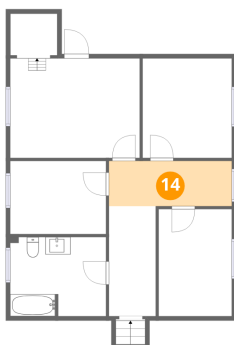
**13** Floor 3 - Hall



Dimensions: 5'4" x 12'7"  
Area: 67 sq. ft  
Counted as living area: Yes

Heated: Yes  
Finished: Yes  
Enclosed: Yes  
Contiguous: Yes  
Permitted: Yes  
Wet space: No  
Addition: No  
Conversion: No

**14** Floor 3 - Hall

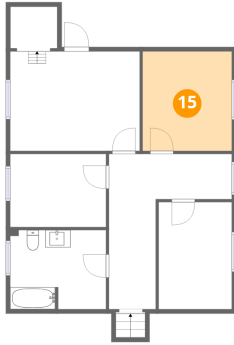


Dimensions: 14'1" x 5'2"  
Area: 73 sq. ft  
Counted as living area: Yes

Heated: Yes  
Finished: Yes  
Enclosed: Yes  
Contiguous: Yes  
Permitted: Yes  
Wet space: No  
Addition: No  
Conversion: No

**15** Floor 3 - Bedroom

---



**Dimensions:** 10'2" x 11'5"  
**Area:** 116 sq. ft  
**Counted as living area:** Yes

**Heated:** Yes  
**Finished:** Yes  
**Enclosed:** Yes  
**Contiguous:** Yes  
**Permitted:** Yes  
**Wet space:** No  
**Addition:** No  
**Conversion:** No