

834 9th Ave NW,Hickory,NC,US

Gross Living Area: 5388 sq. ft

Level 1

| Space | Area (sq. ft) | Calculation <small>Coordinate Polygon Area Algorithm using inches</small> |
|-------------------------------------|---------------|---|
| 1st floor (Living area) | 2515 | $-\left((590.7 + 659.7) * (127.1 - 196.6) + (659.7 + 735.3) * (196.6 - 272.4) + (735.3 + 842.9) * (272.4 - 272.4) + (842.9 + 848.9) * (272.4 - 278.4) + (848.9 + 848.9) * (278.4 - 499.7) + (848.9 + 623.6) * (499.7 - 499.7) + (623.6 + 617.6) * (499.7 - 493.7) + (617.6 + 617.6) * (493.7 - 467.3) + (617.6 + 577.2) * (467.3 - 467.3) + (577.2 + 577.2) * (467.3 - 653.1) + (577.2 + 573.2) * (653.1 - 653.1) + (573.2 + 579.2) * (653.1 - 659.1) + (579.2 + 579.2) * (659.1 - 702.8) + (579.2 + 573.2) * (702.8 - 702.8) + (573.2 + 573.2) * (702.8 - 708.8) + (573.2 + 264.5) * (708.8 - 708.8) + (264.5 + 264.5) * (708.8 - 786.7) + (264.5 + 40.3) * (786.7 - 786.7) + (40.3 + 40.3) * (786.7 - 743.1) + (40.3 + -1.9) * (743.1 - 743.1) + (-1.9 + -1.9) * (743.1 - 469.3) + (-1.9 + 40.3) * (469.3 - 469.3) + (40.3 + 40.3) * (469.3 - 244.4) + (40.3 + 478.1) * (244.4 - 244.4) + (478.1 + 478.1) * (244.4 - 162) + (478.1 + 512.7) * (162 - 127.1) + (512.7 + 590.7) * (127.1 - 127.1)) * 0.5 * 0.00694$ |
| GARAGE (Non-living area) | 379 | $-\left((714.6 + 714.6) * (653.1 - 686.8) + (714.6 + 848.9) * (686.8 - 686.8) + (848.9 + 848.9) * (686.8 - 859.5) + (848.9 + 783.5) * (859.5 - 859.5) + (783.5 + 783.5) * (859.5 - 871.1) + (783.5 + 573.2) * (871.1 - 871.1) + (573.2 + 573.2) * (871.1 - 702.8) + (573.2 + 579.2) * (702.8 - 702.8) + (579.2 + 579.2) * (702.8 - 659.1) + (579.2 + 573.2) * (659.1 - 653.1) + (573.2 + 714.6) * (653.1 - 653.1)) * 0.5 * 0.00694$ |
| GARAGE (Non-living area) | 278 | $-\left((617.6 + 623.6) * (493.7 - 499.7) + (623.6 + 848.9) * (499.7 - 499.7) + (848.9 + 848.9) * (499.7 - 686.8) + (848.9 + 714.6) * (686.8 - 686.8) + (714.6 + 714.6) * (686.8 - 653.1) + (714.6 + 617.6) * (653.1 - 653.1) + (617.6 + 617.6) * (653.1 - 493.7)) * 0.5 * 0.00694$ |
| SCREENED PORCH (Non-living area) | 421 | $-\left((848.9 + 848.9) * (0 - 278.4) + (848.9 + 842.9) * (278.4 - 272.4) + (842.9 + 735.3) * (272.4 - 272.4) + (735.3 + 707.4) * (272.4 - 244.4) + (707.4 + 659.7) * (244.4 - 196.6) + (659.7 + 590.7) * (196.6 - 127.1) + (590.7 + 584.7) * (127.1 - 127.1) + (584.7 + 584.7) * (127.1 - 0) + (584.7 + 848.9) * (0 - 0)) * 0.5 * 0.00694$ |
| UNDEFINED (Non-living area) | 52 | $-\left((617.6 + 617.6) * (467.3 - 653.1) + (617.6 + 577.2) * (653.1 - 653.1) + (577.2 + 577.2) * (653.1 - 467.3) + (577.2 + 617.6) * (467.3 - 467.3)) * 0.5 * 0.00694$ |

834 9th Ave NW,Hickory,NC,US

Gross Living Area: 5388 sq. ft

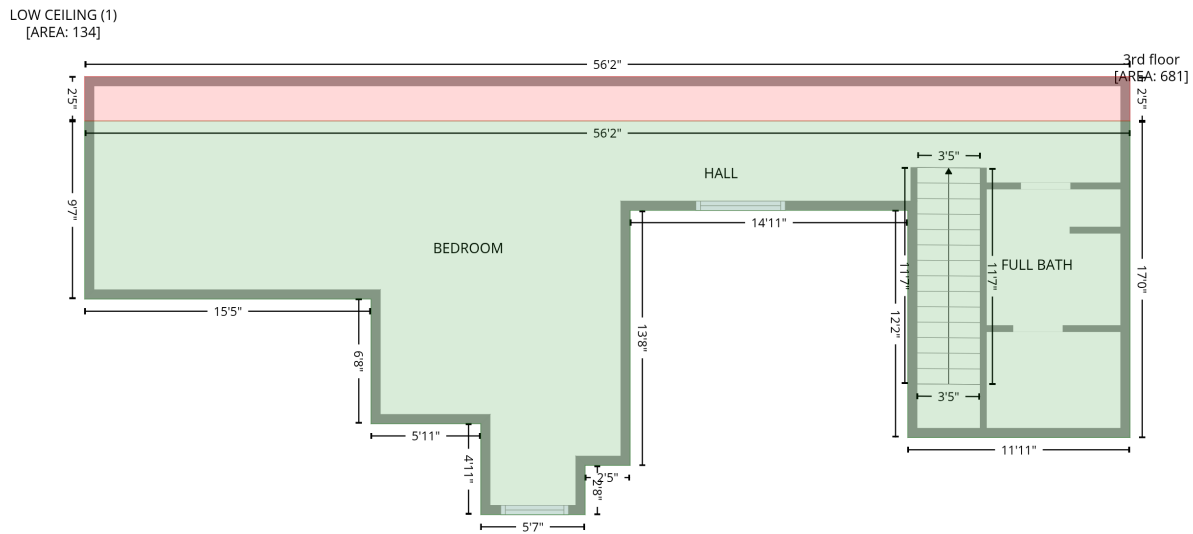
Level 2

| Space | Area (sq. ft) | Calculation <small>Coordinate Polygon Area Algorithm using inches</small> |
|------------------------------------|---------------|---|
| ATTIC (Non-living area) | 356 | $-\left((590.7 + 735.1) * (127.1 - 272.4) + (735.1 + 783.5) * (272.4 - 272.4) + (783.5 + 783.5) * (272.4 - 356.6) + (783.5 + 484.1) * (356.6 - 356.6) + (484.1 + 484.1) * (356.6 - 250.4) + (484.1 + 478.1) * (250.4 - 244.4) + (478.1 + 478.1) * (244.4 - 162) + (478.1 + 512.7) * (162 - 127.1) + (512.7 + 590.7) * (127.1 - 127.1)) * 0.5 * 0.00694$ |
| OPEN TO BELOW (Non-living area) | 154 | $-\left((357.1 + 357.1) * (475.3 - 644.2) + (357.1 + 285.4) * (644.2 - 644.2) + (285.4 + 285.4) * (644.2 - 595.1) + (285.4 + 200.9) * (595.1 - 595.1) + (200.9 + 200.9) * (595.1 - 475.3) + (200.9 + 357.1) * (475.3 - 475.3)) * 0.5 * 0.00694$ |

834 9th Ave NW, Hickory, NC, US

Gross Living Area: 5388 sq. ft

Level 3



| Space | Area (sq. ft) | Calculation <small>Coordinate Polygon Area Algorithm using inches</small> |
|----------------------------------|---------------|---|
| 3rd floor (Living area) | 681 | $-\left((714.6 + 714.6) * (455.2 - 659.1) + (714.6 + 571.2) * (659.1 - 659.1) + (571.2 + 571.2) * (659.1 - 512.8) + (571.2 + 392.1) * (512.8 - 512.8) + (392.1 + 392.1) * (512.8 - 677.1) + (392.1 + 363.1) * (677.1 - 677.1) + (363.1 + 363.1) * (677.1 - 708.8) + (363.1 + 295.8) * (708.8 - 708.8) + (295.8 + 295.8) * (708.8 - 650.2) + (295.8 + 225) * (650.2 - 650.2) + (225 + 225) * (650.2 - 569.9) + (225 + 40.3) * (569.9 - 569.9) + (40.3 + 40.3) * (569.9 - 455.2) + (40.3 + 714.6) * (455.2 - 455.2)\right) * 0.5 * 0.00694$ |
| LOW CEILING (Non-living area) | 134 | $-\left((714.6 + 714.6) * (426.6 - 455.2) + (714.6 + 40.3) * (455.2 - 455.2) + (40.3 + 40.3) * (455.2 - 426.6) + (40.3 + 714.6) * (426.6 - 426.6)\right) * 0.5 * 0.00694$ |