

Home data report

415 High Street, West Duxbury, Pembroke, Plymouth County, Massachusetts, United States, 02359



Total Area: 2608 sq. ft

Basement: 632 sq. ft, 1st Floor: 1085 sq. ft, 2nd Floor: 891 sq. ft

Excluded: Utility 259 sq. ft, Deck 247 sq. ft, Embedded window 10 sq. ft, Walls: 198 sq. ft

Property summary

 **3** Floors

 **3** Bedrooms

 **2** Bathrooms

 **1** Half baths

Home data report

415 High Street, West Duxbury, Pembroke, Plymouth County, Massachusetts, United States, 02359



Room dimensions

Floor 1 Below grade

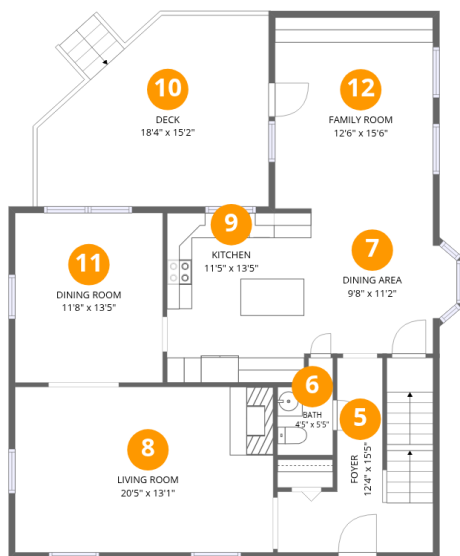
Total:632sqft

Excluded: 259sqft

#		Dimensions	sqft	Counted as living area
1	Recreation Room	19'3" x 13'5"	259 sq. ft	Yes
2	Bonus Room	19'3" x 13'1"	243 sq. ft	Yes
3	Utility	13'7" x 19'1"	259 sq. ft	No
4	Hall	13'7" x 6'11"	102 sq. ft	Yes

Home data report

415 High Street, West Duxbury, Pembroke, Plymouth County, Massachusetts, United States, 02359



Room dimensions

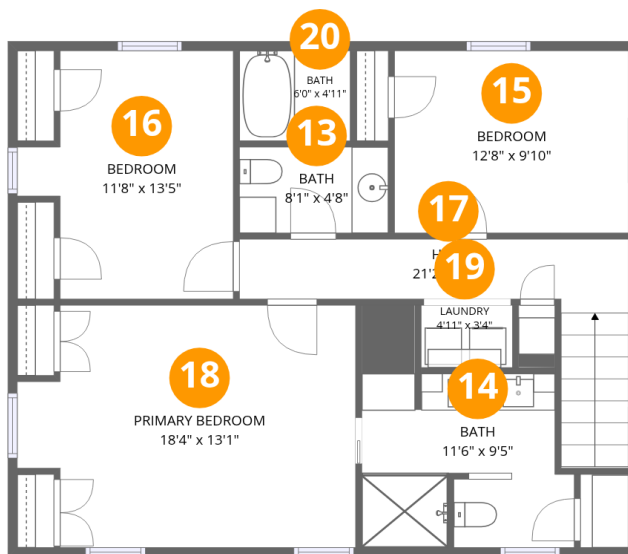
Floor 2

Total:1085sqft Excluded: 257sqft

#		Dimensions	sqft	Counted as living area
5	Foyer	12'4" x 15'5"	137 sq. ft	Yes
6	Bath	4'5" x 5'5"	24 sq. ft	Yes
7	Dining Area	9'8" x 11'2"	108 sq. ft	Yes
8	Living Room	20'5" x 13'1"	268 sq. ft	Yes
9	Kitchen	11'5" x 13'5"	153 sq. ft	Yes
10	Deck	18'4" x 15'2"	247 sq. ft	No
11	Dining Room	11'8" x 13'5"	157 sq. ft	Yes
12	Family Room	12'6" x 15'6"	193 sq. ft	Yes

Home data report

415 High Street, West Duxbury, Pembroke, Plymouth County, Massachusetts, United States, 02359



Room dimensions

Floor 3

Total:891sqft Excluded: 0sqft

#		Dimensions	sqft	Counted as living area
13	Bath	8'1" x 4'8"	38 sq. ft	Yes
14	Bath	11'6" x 9'5"	111 sq. ft	Yes
15	Bedroom	12'8" x 9'10"	125 sq. ft	Yes
16	Bedroom	11'8" x 13'5"	132 sq. ft	Yes
17	Hall	21'2" x 4'0"	102 sq. ft	Yes
18	Primary Bedroom	18'4" x 13'1"	220 sq. ft	Yes
19	Laundry	4'11" x 3'4"	17 sq. ft	Yes
20	Bath	6'0" x 4'11"	29 sq. ft	Yes

415 High Street, West Duxbury, Pembroke, Plymouth County, Massachusetts, United States, 02359

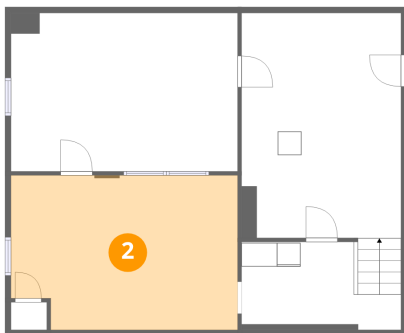
1 Floor 1 - Recreation Room



Dimensions: 19'3" x 13'5"
Area: 259 sq. ft
Counted as living area: Yes

Heated: Yes
Finished: Yes
Enclosed: Yes
Contiguous: Yes
Permitted: Yes
Wet space: No
Addition: No
Conversion: No

2 Floor 1 - Bonus Room



Dimensions: 19'3" x 13'1"
Area: 243 sq. ft
Counted as living area: Yes

Heated: Yes
Finished: Yes
Enclosed: Yes
Contiguous: Yes
Permitted: Yes
Wet space: No
Addition: No
Conversion: No

415 High Street, West Duxbury, Pembroke, Plymouth County, Massachusetts, United States, 02359

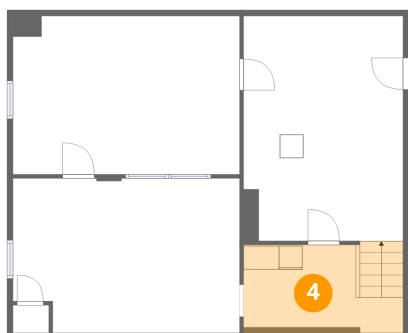
3 Floor 1 - Utility



Dimensions: 13'7" x 19'1"
Area: 259 sq. ft
Counted as living area: No

Heated: Yes
Finished: No
Enclosed: Yes
Contiguous: Yes
Permitted: Yes
Wet space: No
Addition: No
Conversion: No

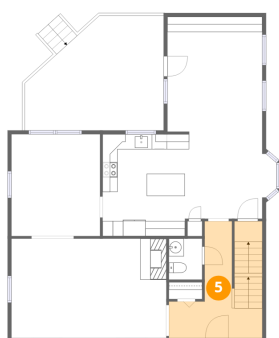
4 Floor 1 - Hall



Dimensions: 13'7" x 6'11"
Area: 102 sq. ft
Counted as living area: Yes

Heated: Yes
Finished: Yes
Enclosed: Yes
Contiguous: Yes
Permitted: Yes
Wet space: No
Addition: No
Conversion: No

5 Floor 2 - Foyer



Dimensions: 12'4" x 15'5"
Area: 137 sq. ft
Counted as living area: Yes

Heated: Yes
Finished: Yes
Enclosed: Yes
Contiguous: Yes
Permitted: Yes
Wet space: No
Addition: No
Conversion: No

415 High Street, West Duxbury, Pembroke, Plymouth County, Massachusetts, United States, 02359

6 Floor 2 - Bath



Dimensions: 4'5" x 5'5"
Area: 24 sq. ft
Counted as living area: Yes

Heated: Yes
Finished: Yes
Enclosed: Yes
Contiguous: Yes
Permitted: Yes
Wet space: Yes
Addition: No
Conversion: No

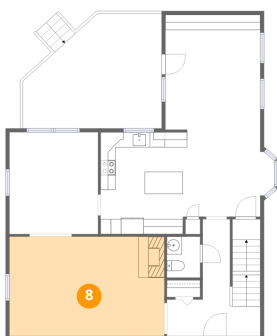
7 Floor 2 - Dining Area



Dimensions: 9'8" x 11'2"
Area: 108 sq. ft
Counted as living area: Yes

Heated: Yes
Finished: Yes
Enclosed: Yes
Contiguous: Yes
Permitted: Yes
Wet space: No
Addition: No
Conversion: No

8 Floor 2 - Living Room

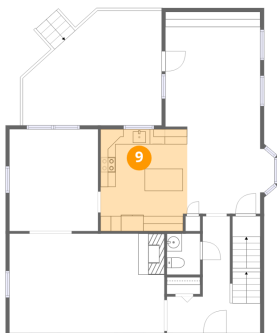


Dimensions: 20'5" x 13'1"
Area: 268 sq. ft
Counted as living area: Yes

Heated: Yes
Finished: Yes
Enclosed: Yes
Contiguous: Yes
Permitted: Yes
Wet space: No
Addition: No
Conversion: No

415 High Street, West Duxbury, Pembroke, Plymouth County, Massachusetts, United States, 02359

9 Floor 2 - Kitchen



Dimensions: 11'5" x 13'5"
Area: 153 sq. ft
Counted as living area: Yes

Heated: Yes
Finished: Yes
Enclosed: Yes
Contiguous: Yes
Permitted: Yes
Wet space: No
Addition: No
Conversion: No

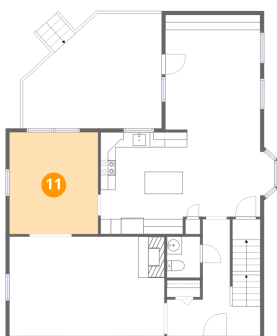
10 Floor 2 - Deck



Dimensions: 18'4" x 15'2"
Area: 247 sq. ft
Counted as living area: No

Heated: No
Finished: No
Enclosed: No
Contiguous: Yes
Permitted: Yes
Wet space: No
Addition: No
Conversion: No

11 Floor 2 - Dining Room



Dimensions: 11'8" x 13'5"
Area: 157 sq. ft
Counted as living area: Yes

Heated: Yes
Finished: Yes
Enclosed: Yes
Contiguous: Yes
Permitted: Yes
Wet space: No
Addition: No
Conversion: No

415 High Street, West Duxbury, Pembroke, Plymouth County, Massachusetts, United States, 02359

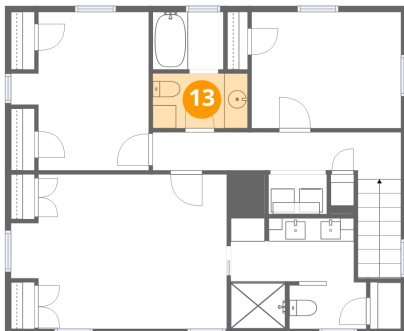
12 Floor 2 - Family Room



Dimensions: 12'6" x 15'6"
Area: 193 sq. ft
Counted as living area: Yes

Heated: Yes
Finished: Yes
Enclosed: Yes
Contiguous: Yes
Permitted: Yes
Wet space: No
Addition: No
Conversion: No

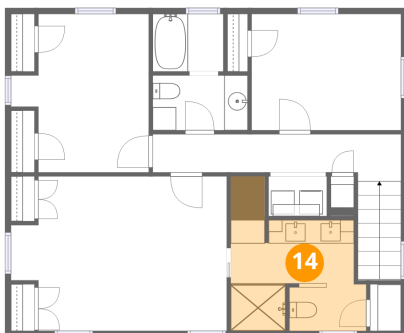
13 Floor 3 - Bath



Dimensions: 8'1" x 4'8"
Area: 38 sq. ft
Counted as living area: Yes

Heated: Yes
Finished: Yes
Enclosed: Yes
Contiguous: Yes
Permitted: Yes
Wet space: Yes
Addition: No
Conversion: No

14 Floor 3 - Bath

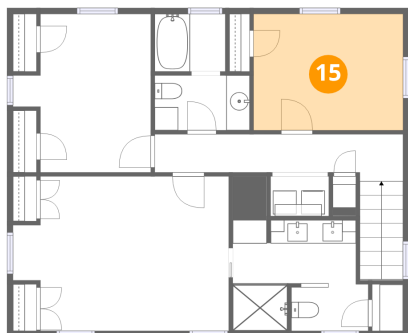


Dimensions: 11'6" x 9'5"
Area: 111 sq. ft
Counted as living area: Yes

Heated: Yes
Finished: Yes
Enclosed: Yes
Contiguous: Yes
Permitted: Yes
Wet space: Yes
Addition: No
Conversion: No

415 High Street, West Duxbury, Pembroke, Plymouth County, Massachusetts, United States, 02359

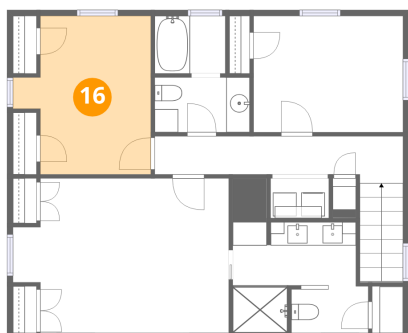
15 Floor 3 - Bedroom



Dimensions: 12'8" x 9'10"
Area: 125 sq. ft
Counted as living area: Yes

Heated: Yes
Finished: Yes
Enclosed: Yes
Contiguous: Yes
Permitted: Yes
Wet space: No
Addition: No
Conversion: No

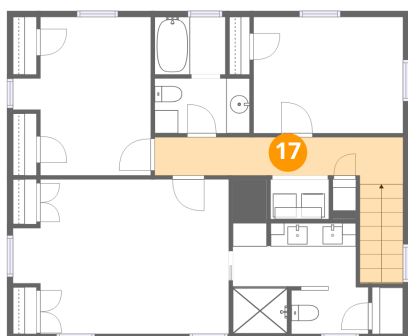
16 Floor 3 - Bedroom



Dimensions: 11'8" x 13'5"
Area: 132 sq. ft
Counted as living area: Yes

Heated: Yes
Finished: Yes
Enclosed: Yes
Contiguous: Yes
Permitted: Yes
Wet space: No
Addition: No
Conversion: No

17 Floor 3 - Hall

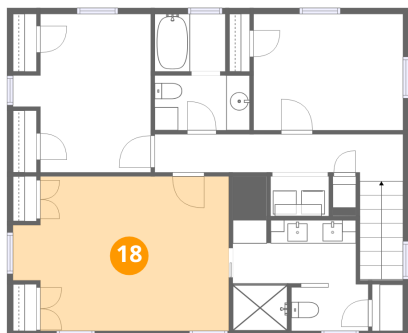


Dimensions: 21'2" x 4'0"
Area: 102 sq. ft
Counted as living area: Yes

Heated: Yes
Finished: Yes
Enclosed: Yes
Contiguous: Yes
Permitted: Yes
Wet space: No
Addition: No
Conversion: No

415 High Street, West Duxbury, Pembroke, Plymouth County, Massachusetts, United States, 02359

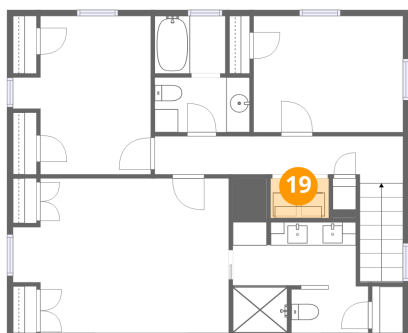
18 Floor 3 - Primary Bedroom



Dimensions: 18'4" x 13'1"
Area: 220 sq. ft
Counted as living area: Yes

Heated: Yes
Finished: Yes
Enclosed: Yes
Contiguous: Yes
Permitted: Yes
Wet space: No
Addition: No
Conversion: No

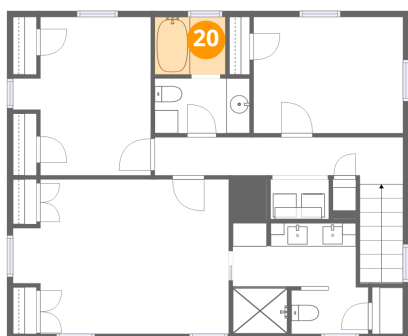
19 Floor 3 - Laundry



Dimensions: 4'11" x 3'4"
Area: 17 sq. ft
Counted as living area: Yes

Heated: Yes
Finished: Yes
Enclosed: Yes
Contiguous: Yes
Permitted: Yes
Wet space: No
Addition: No
Conversion: No

20 Floor 3 - Bath



Dimensions: 6'0" x 4'11"
Area: 29 sq. ft
Counted as living area: Yes

Heated: Yes
Finished: Yes
Enclosed: Yes
Contiguous: Yes
Permitted: Yes
Wet space: Yes
Addition: No
Conversion: No