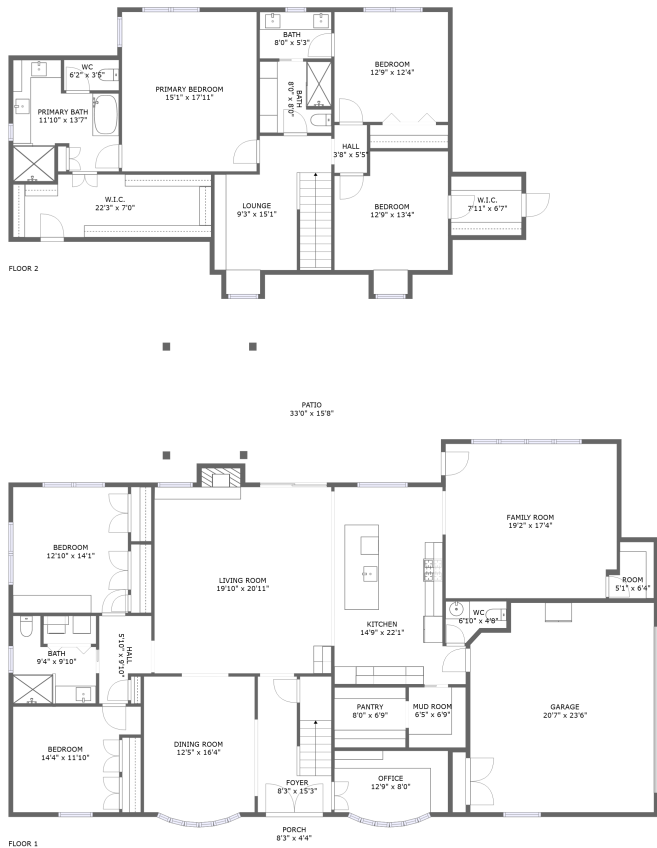


Home report

4504 Allencrest Lane, Schreiber Manor, Dallas, Dallas County, Texas, United States, 75244



Total Area: 3523 sq. ft

Floor 1: 2201 sq. ft, Floor 2: 1322 sq. ft

Excluded: Garage 480 sq. ft, Porch 36 sq. ft, Patio 490 sq. ft, Fireplace 12 sq. ft, Low ceiling 17 sq. ft, Walls: 228 sq. ft

Property summary

 **2** Floors

 **5** Bedrooms

 **3** Bathrooms

Home report

**4504 Allencrest Lane, Schreiber Manor, Dallas, Dallas County,
Texas, United States, 75244**



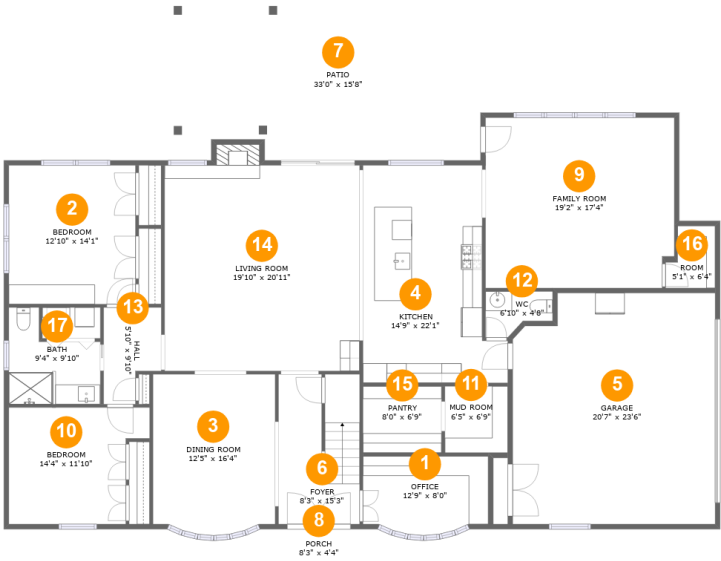
1
Half baths



1
Garages

Home report

4504 Allencrest Lane, Schreiber Manor, Dallas, Dallas County, Texas, United States, 75244



Room dimensions

Floor 1 Total:2201sqft Excluded: 1018sqft

#		Max Dimensions	sqft	Included
1	Office	12'9" x 8'0"	95 sq. ft	Yes
2	Bedroom	12'10" x 14'1"	182 sq. ft	Yes
3	Dining Room	12'5" x 16'4"	196 sq. ft	Yes
4	Kitchen	14'9" x 22'1"	280 sq. ft	Yes
5	Garage	20'7" x 23'6"	468 sq. ft	No
6	Foyer	8'3" x 15'3"	123 sq. ft	Yes
7	Patio	33'0" x 15'8"	490 sq. ft	No
8	Porch	8'3" x 4'4"	36 sq. ft	No
9	Family Room	19'2" x 17'4"	329 sq. ft	Yes
10	Bedroom	14'4" x 11'10"	149 sq. ft	Yes
11	Mud Room	6'5" x 6'9"	43 sq. ft	Yes

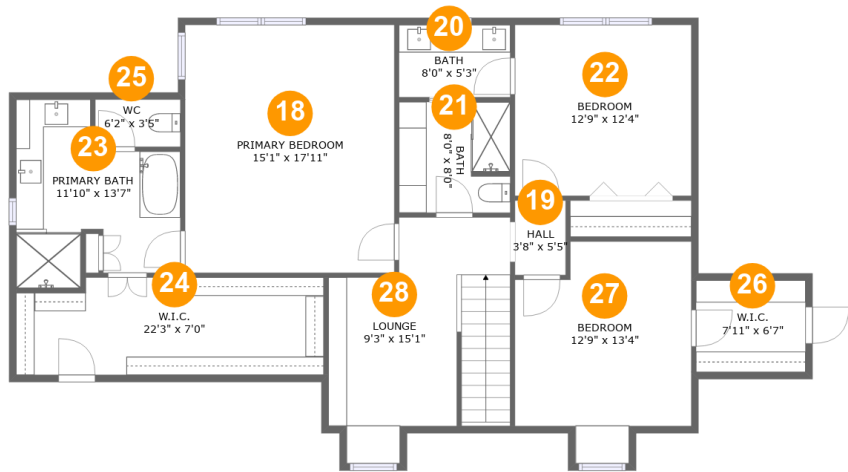
Home report

4504 Allencrest Lane, Schreiber Manor, Dallas, Dallas County, Texas, United States, 75244

#		Max Dimensions	sqft	Included
12	WC	6'10" x 4'8"	26 sq. ft	Yes
13	Hall	5'10" x 9'10"	49 sq. ft	Yes
14	Living Room	19'10" x 20'11"	424 sq. ft	Yes
15	Pantry	8'0" x 6'9"	54 sq. ft	Yes
16	Room	5'1" x 6'4"	27 sq. ft	Yes
17	Bath	9'4" x 9'10"	70 sq. ft	Yes

Home report

4504 Allencrest Lane, Schreiber Manor, Dallas, Dallas County, Texas, United States, 75244



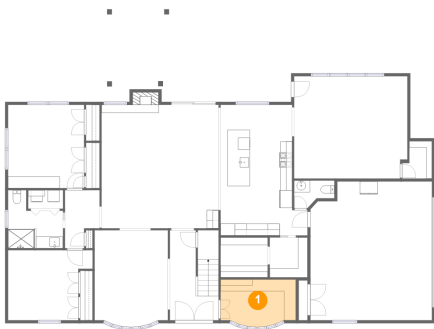
Room dimensions

Floor 2 Total:1322sqft Excluded: 17sqft

#		Max Dimensions	sqft	Included
18	Primary Bedroom	15'1" x 17'11"	270 sq. ft	Yes
19	Hall	3'8" x 5'5"	20 sq. ft	Yes
20	Bath	8'0" x 5'3"	42 sq. ft	Yes
21	Bath	8'0" x 8'0"	63 sq. ft	Yes
22	Bedroom	12'9" x 12'4"	157 sq. ft	Yes
23	Primary Bath	11'10" x 13'7"	124 sq. ft	Yes
24	W.I.C.	22'3" x 7'0"	151 sq. ft	Yes
25	WC	6'2" x 3'5"	21 sq. ft	Yes
26	W.I.C.	7'11" x 6'7"	52 sq. ft	Yes
27	Bedroom	12'9" x 13'4"	159 sq. ft	Yes
28	Lounge	9'3" x 15'1"	178 sq. ft	Yes

4504 Allencrest Lane, Schreiber Manor, Dallas, Dallas County, Texas, United States, 75244

1 Floor 1 - Office



Max Dimensions: 12'9" x 8'0"
Calculated Area: 95 sq. ft
Included: Yes

Heated: Yes
Finished: Yes
Enclosed: Yes
Contiguous: Yes
Permitted: Yes
Wet space: No
Addition: No
Conversion: No

2 Floor 1 - Bedroom



Max Dimensions: 12'10" x 14'1"
Calculated Area: 182 sq. ft
Included: Yes

Heated: Yes
Finished: Yes
Enclosed: Yes
Contiguous: Yes
Permitted: Yes
Wet space: No
Addition: No
Conversion: No

4504 Allencrest Lane, Schreiber Manor, Dallas, Dallas County, Texas, United States, 75244

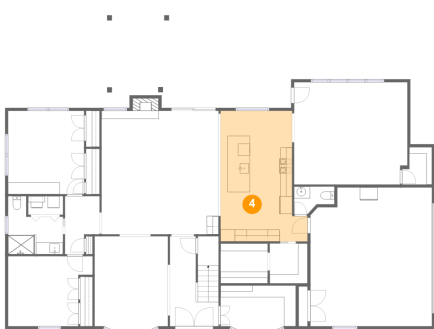
3 Floor 1 - Dining Room



Max Dimensions: 12'5" x 16'4"
Calculated Area: 196 sq. ft
Included: Yes

Heated: Yes
Finished: Yes
Enclosed: Yes
Contiguous: Yes
Permitted: Yes
Wet space: No
Addition: No
Conversion: No

4 Floor 1 - Kitchen



Max Dimensions: 14'9" x 22'1"
Calculated Area: 280 sq. ft
Included: Yes

Heated: Yes
Finished: Yes
Enclosed: Yes
Contiguous: Yes
Permitted: Yes
Wet space: No
Addition: No
Conversion: No

5 Floor 1 - Garage



Max Dimensions: 20'7" x 23'6"
Calculated Area: 468 sq. ft
Included: No

Heated: No
Finished: No
Enclosed: Yes
Contiguous: Yes
Permitted: Yes
Wet space: No
Addition: No
Conversion: No

4504 Allencrest Lane, Schreiber Manor, Dallas, Dallas County, Texas, United States, 75244

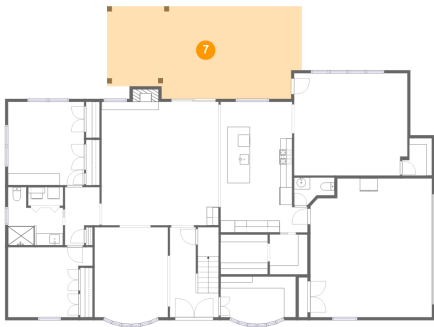
6 Floor 1 - Foyer



Max Dimensions: 8'3" x 15'3"
Calculated Area: 123 sq. ft
Included: Yes

Heated: Yes
Finished: Yes
Enclosed: Yes
Contiguous: Yes
Permitted: Yes
Wet space: No
Addition: No
Conversion: No

7 Floor 1 - Patio



Max Dimensions: 33'0" x 15'8"
Calculated Area: 490 sq. ft
Included: No

Heated: No
Finished: Yes
Enclosed: No
Contiguous: Yes
Permitted: Yes
Wet space: No
Addition: No
Conversion: No

8 Floor 1 - Porch



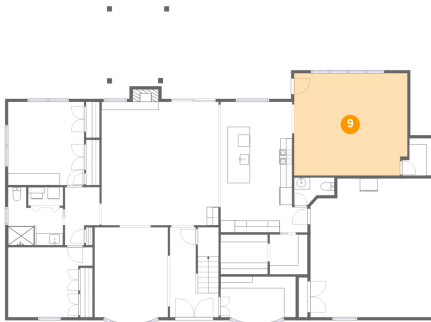
Max Dimensions: 8'3" x 4'4"
Calculated Area: 36 sq. ft
Included: No

Heated: No
Finished: Yes
Enclosed: No
Contiguous: Yes
Permitted: Yes
Wet space: No
Addition: No
Conversion: No

Home report

4504 Allencrest Lane, Schreiber Manor, Dallas, Dallas County,
Texas, United States, 75244

9 Floor 1 - Family Room



Max Dimensions: 19'2" x 17'4"
Calculated Area: 329 sq. ft
Included: Yes

Heated: Yes
Finished: Yes
Enclosed: Yes
Contiguous: Yes
Permitted: Yes
Wet space: No
Addition: No
Conversion: No

10 Floor 1 - Bedroom



Max Dimensions: 14'4" x 11'10"
Calculated Area: 149 sq. ft
Included: Yes

Heated: Yes
Finished: Yes
Enclosed: Yes
Contiguous: Yes
Permitted: Yes
Wet space: No
Addition: No
Conversion: No

11 Floor 1 - Mud Room



Max Dimensions: 6'5" x 6'9"
Calculated Area: 43 sq. ft
Included: Yes

Heated: Yes
Finished: Yes
Enclosed: Yes
Contiguous: Yes
Permitted: Yes
Wet space: No
Addition: No
Conversion: No

4504 Allencrest Lane, Schreiber Manor, Dallas, Dallas County,
Texas, United States, 75244

12 Floor 1 - WC



Max Dimensions: 6'10" x 4'8"
Calculated Area: 26 sq. ft
Included: Yes

Heated: Yes
Finished: Yes
Enclosed: Yes
Contiguous: Yes
Permitted: Yes
Wet space: Yes
Addition: No
Conversion: No

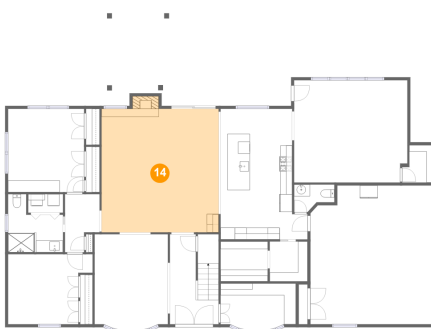
13 Floor 1 - Hall



Max Dimensions: 5'10" x 9'10"
Calculated Area: 49 sq. ft
Included: Yes

Heated: Yes
Finished: Yes
Enclosed: Yes
Contiguous: Yes
Permitted: Yes
Wet space: No
Addition: No
Conversion: No

14 Floor 1 - Living Room



Max Dimensions: 19'10" x 20'11"
Calculated Area: 424 sq. ft
Included: Yes

Heated: Yes
Finished: Yes
Enclosed: Yes
Contiguous: Yes
Permitted: Yes
Wet space: No
Addition: No
Conversion: No

4504 Allencrest Lane, Schreiber Manor, Dallas, Dallas County, Texas, United States, 75244

15 Floor 1 - Pantry



Max Dimensions: 8'0" x 6'9"
Calculated Area: 54 sq. ft
Included: Yes

Heated: Yes
Finished: Yes
Enclosed: Yes
Contiguous: Yes
Permitted: Yes
Wet space: No
Addition: No
Conversion: No

16 Floor 1 - Room



Max Dimensions: 5'1" x 6'4"
Calculated Area: 27 sq. ft
Included: Yes

Heated: Yes
Finished: Yes
Enclosed: Yes
Contiguous: Yes
Permitted: Yes
Wet space: No
Addition: No
Conversion: No

17 Floor 1 - Bath

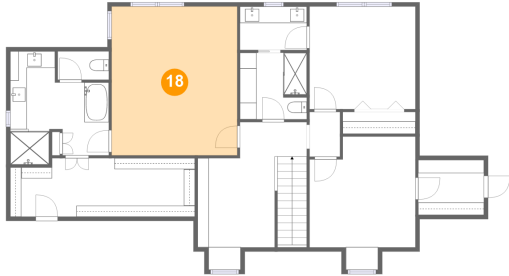


Max Dimensions: 9'4" x 9'10"
Calculated Area: 70 sq. ft
Included: Yes

Heated: Yes
Finished: Yes
Enclosed: Yes
Contiguous: Yes
Permitted: Yes
Wet space: Yes
Addition: No
Conversion: No

4504 Allencrest Lane, Schreiber Manor, Dallas, Dallas County,
Texas, United States, 75244

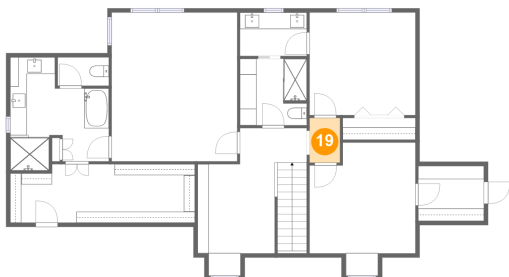
18 Floor 2 - Primary Bedroom



Max Dimensions: 15'1" x 17'11"
Calculated Area: 270 sq. ft
Included: Yes

Heated: Yes
Finished: Yes
Enclosed: Yes
Contiguous: Yes
Permitted: Yes
Wet space: No
Addition: No
Conversion: No

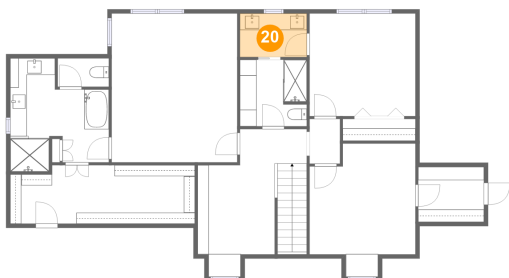
19 Floor 2 - Hall



Max Dimensions: 3'8" x 5'5"
Calculated Area: 20 sq. ft
Included: Yes

Heated: Yes
Finished: Yes
Enclosed: Yes
Contiguous: Yes
Permitted: Yes
Wet space: No
Addition: No
Conversion: No

20 Floor 2 - Bath

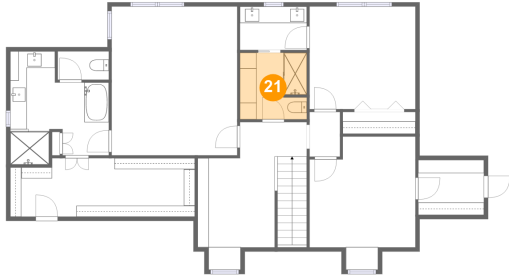


Max Dimensions: 8'0" x 5'3"
Calculated Area: 42 sq. ft
Included: Yes

Heated: Yes
Finished: Yes
Enclosed: Yes
Contiguous: Yes
Permitted: Yes
Wet space: Yes
Addition: No
Conversion: No

4504 Allencrest Lane, Schreiber Manor, Dallas, Dallas County,
Texas, United States, 75244

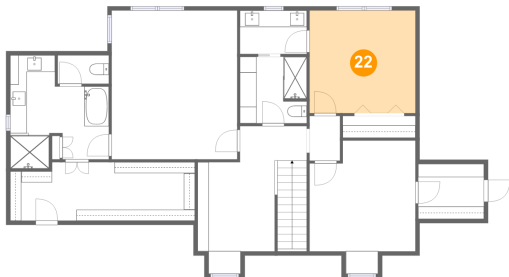
21 Floor 2 - Bath



Max Dimensions: 8'0" x 8'0"
Calculated Area: 63 sq. ft
Included: Yes

Heated: Yes
Finished: Yes
Enclosed: Yes
Contiguous: Yes
Permitted: Yes
Wet space: Yes
Addition: No
Conversion: No

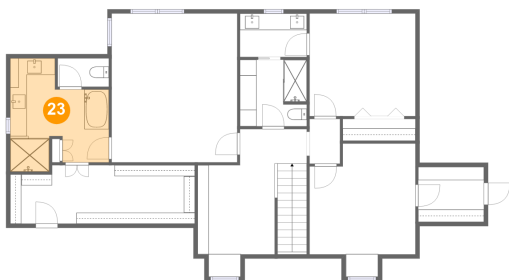
22 Floor 2 - Bedroom



Max Dimensions: 12'9" x
12'4"
Calculated Area: 157 sq. ft
Included: Yes

Heated: Yes
Finished: Yes
Enclosed: Yes
Contiguous:
Yes
Permitted: Yes
Wet space: No
Addition: No
Conversion: No

23 Floor 2 - Primary Bath

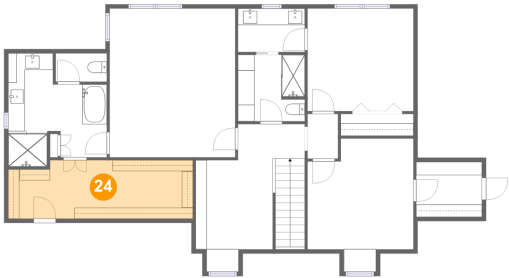


Max Dimensions: 11'10" x
13'7"
Calculated Area: 124 sq. ft
Included: Yes

Heated: Yes
Finished: Yes
Enclosed: Yes
Contiguous:
Yes
Permitted: Yes
Wet space: Yes
Addition: No
Conversion: No

4504 Allencrest Lane, Schreiber Manor, Dallas, Dallas County,
Texas, United States, 75244

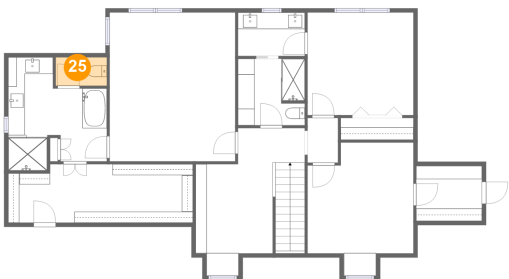
24 Floor 2 - W.I.C.



Max Dimensions: 22'3" x 7'0"
Calculated Area: 151 sq. ft
Included: Yes

Heated: Yes
Finished: Yes
Enclosed: Yes
Contiguous: Yes
Permitted: Yes
Wet space: No
Addition: No
Conversion: No

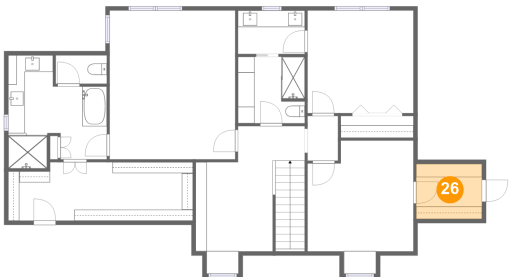
25 Floor 2 - WC



Max Dimensions: 6'2" x 3'5"
Calculated Area: 21 sq. ft
Included: Yes

Heated: Yes
Finished: Yes
Enclosed: Yes
Contiguous: Yes
Permitted: Yes
Wet space: Yes
Addition: No
Conversion: No

26 Floor 2 - W.I.C.

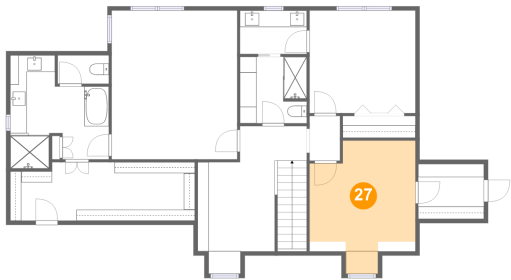


Max Dimensions: 7'11" x 6'7"
Calculated Area: 52 sq. ft
Included: Yes

Heated: Yes
Finished: Yes
Enclosed: Yes
Contiguous: Yes
Permitted: Yes
Wet space: No
Addition: No
Conversion: No

4504 Allencrest Lane, Schreiber Manor, Dallas, Dallas County, Texas, United States, 75244

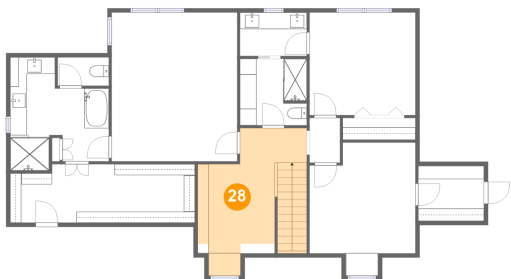
27 Floor 2 - Bedroom



Max Dimensions: 12'9" x 13'4"
Calculated Area: 159 sq. ft
Included: Yes

Heated: Yes
Finished: Yes
Enclosed: Yes
Contiguous: Yes
Permitted: Yes
Wet space: No
Addition: No
Conversion: No

28 Floor 2 - Lounge



Max Dimensions: 9'3" x 15'1"
Calculated Area: 178 sq. ft
Included: Yes

Heated: Yes
Finished: Yes
Enclosed: Yes
Contiguous: Yes
Permitted: Yes
Wet space: No
Addition: No
Conversion: No