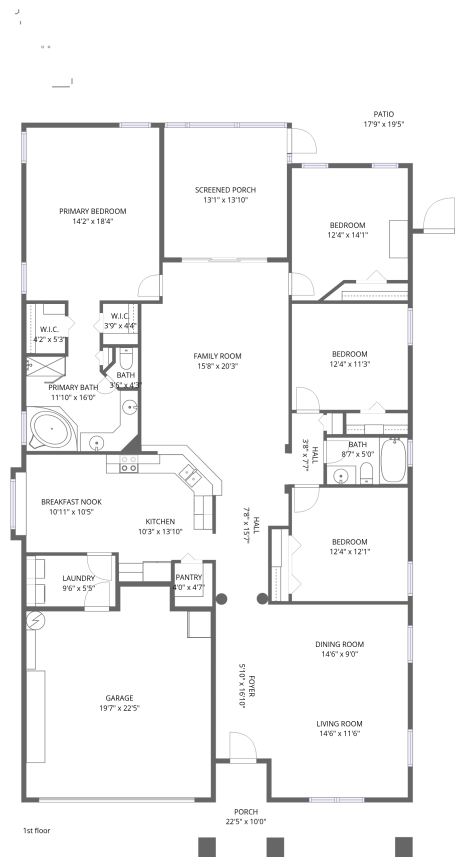


## Home data report

7637 Grasmere Drive, Land O'Lakes, Pasco County, Florida,  
United States, 34637



**Total Area: 2187 sq. ft**

1st Floor: 2187 sq. ft

Excluded: Garage 402 sq. ft, Screened porch 180 sq. ft, Porch 156 sq. ft, Patio 257 sq. ft,  
Walls: 168 sq. ft

## Property summary



**1**  
Floors



**4**  
Bedrooms



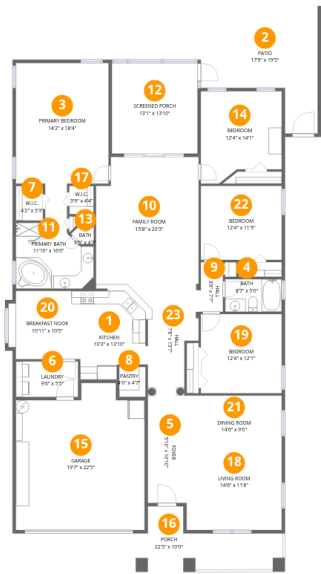
**2**  
Bathrooms



**1**  
Garages

Home data report

7637 Grasmere Drive, Land O'Lakes, Pasco County, Florida,  
United States, 34637



Room dimensions

Floor 1 Total:2187sqft    Excluded: 995sqft

#		Dimensions	sqft	Counted as living area
1	Kitchen	10'3" x 13'10"	128 sq. ft	Yes
2	Patio	17'9" x 19'5"	257 sq. ft	No
3	Primary Bedroom	14'2" x 18'4"	260 sq. ft	Yes
4	Bath	8'7" x 5'0"	43 sq. ft	Yes
5	Foyer	5'10" x 16'10"	99 sq. ft	Yes
6	Laundry	9'6" x 5'5"	51 sq. ft	Yes
7	W.I.C.	4'2" x 5'3"	22 sq. ft	Yes
8	Pantry	4'0" x 4'7"	19 sq. ft	Yes
9	Hall	3'8" x 7'7"	27 sq. ft	Yes
10	Family Room	15'8" x 20'3"	306 sq. ft	Yes
11	Primary Bath	11'10" x 16'0"	127 sq. ft	Yes

## Home data report

**7637 Grasmere Drive, Land O'Lakes, Pasco County, Florida,  
United States, 34637**

#		Dimensions	sqft	Counted as living area
12	Screened Porch	13'1" x 13'10"	180 sq. ft	No
13	Bath	3'6" x 4'3"	11 sq. ft	Yes
14	Bedroom	12'4" x 14'1"	156 sq. ft	Yes
15	Garage	19'7" x 22'5"	402 sq. ft	No
16	Porch	22'5" x 10'0"	156 sq. ft	No
17	W.I.C.	3'9" x 4'4"	16 sq. ft	Yes
18	Living Room	14'6" x 11'6"	167 sq. ft	Yes
19	Bedroom	12'4" x 12'1"	149 sq. ft	Yes
20	Breakfast Nook	10'11" x 10'5"	110 sq. ft	Yes
21	Dining Room	14'6" x 9'0"	130 sq. ft	Yes
22	Bedroom	12'4" x 11'3"	139 sq. ft	Yes
23	Hall	7'8" x 15'7"	103 sq. ft	Yes

7637 Grasmere Drive, Land O'Lakes, Pasco County, Florida,  
United States, 34637

1 Floor 1 - Kitchen



Dimensions: 10'3" x 13'10"  
Area: 128 sq. ft  
Counted as living area: Yes

Heated: Yes  
Finished: Yes  
Enclosed: Yes  
Contiguous: Yes  
Permitted: Yes  
Wet space: No  
Addition: No  
Conversion: No

2 Floor 1 - Patio



Dimensions: 17'9" x 19'5"  
Area: 257 sq. ft  
Counted as living area: No

Heated: No  
Finished: No  
Enclosed: No  
Contiguous: Yes  
Permitted: Yes  
Wet space: No  
Addition: No  
Conversion: No

7637 Grasmere Drive, Land O'Lakes, Pasco County, Florida,  
United States, 34637

### 3 Floor 1 - Primary Bedroom



Dimensions: 14'2" x 18'4"  
Area: 260 sq. ft  
Counted as living area: Yes

Heated: Yes  
Finished: Yes  
Enclosed: Yes  
Contiguous: Yes  
Permitted: Yes  
Wet space: No  
Addition: No  
Conversion: No

### 4 Floor 1 - Bath



Dimensions: 8'7" x 5'0"  
Area: 43 sq. ft  
Counted as living area: Yes

Heated: Yes  
Finished: Yes  
Enclosed: Yes  
Contiguous: Yes  
Permitted: Yes  
Wet space: Yes  
Addition: No  
Conversion: No

### 5 Floor 1 - Foyer



Dimensions: 5'10" x 16'10"  
Area: 99 sq. ft  
Counted as living area: Yes

Heated: Yes  
Finished: Yes  
Enclosed: Yes  
Contiguous: Yes  
Permitted: Yes  
Wet space: No  
Addition: No  
Conversion: No

7637 Grasmere Drive, Land O'Lakes, Pasco County, Florida,  
United States, 34637

6 Floor 1 - Laundry



Dimensions: 9'6" x 5'5"  
Area: 51 sq. ft  
Counted as living area: Yes

Heated: Yes  
Finished: Yes  
Enclosed: Yes  
Contiguous: Yes  
Permitted: Yes  
Wet space: No  
Addition: No  
Conversion: No

7 Floor 1 - W.I.C.



Dimensions: 4'2" x 5'3"  
Area: 22 sq. ft  
Counted as living area: Yes

Heated: Yes  
Finished: Yes  
Enclosed: Yes  
Contiguous: Yes  
Permitted: Yes  
Wet space: No  
Addition: No  
Conversion: No

8 Floor 1 - Pantry



Dimensions: 4'0" x 4'7"  
Area: 19 sq. ft  
Counted as living area: Yes

Heated: Yes  
Finished: Yes  
Enclosed: Yes  
Contiguous: Yes  
Permitted: Yes  
Wet space: No  
Addition: No  
Conversion: No

## Home data report

7637 Grasmere Drive, Land O'Lakes, Pasco County, Florida,  
United States, 34637

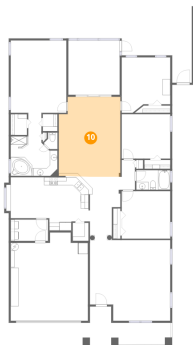
### 9 Floor 1 - Hall



Dimensions: 3'8" x 7'7"  
Area: 27 sq. ft  
Counted as living area: Yes

Heated: Yes  
Finished: Yes  
Enclosed: Yes  
Contiguous: Yes  
Permitted: Yes  
Wet space: No  
Addition: No  
Conversion: No

### 10 Floor 1 - Family Room



Dimensions: 15'8" x 20'3"  
Area: 306 sq. ft  
Counted as living area: Yes

Heated: Yes  
Finished: Yes  
Enclosed: Yes  
Contiguous: Yes  
Permitted: Yes  
Wet space: No  
Addition: No  
Conversion: No

### 11 Floor 1 - Primary Bath



Dimensions: 11'10" x 16'0"  
Area: 127 sq. ft  
Counted as living area: Yes

Heated: Yes  
Finished: Yes  
Enclosed: Yes  
Contiguous: Yes  
Permitted: Yes  
Wet space: Yes  
Addition: No  
Conversion: No

7637 Grasmere Drive, Land O'Lakes, Pasco County, Florida,  
United States, 34637

12 Floor 1 - Screened Porch



Dimensions: 13'1" x 13'10"  
Area: 180 sq. ft  
Counted as living area: No

Heated: No  
Finished: No  
Enclosed: No  
Contiguous: Yes  
Permitted: Yes  
Wet space: No  
Addition: No  
Conversion: No

13 Floor 1 - Bath



Dimensions: 3'6" x 4'3"  
Area: 11 sq. ft  
Counted as living area: Yes

Heated: Yes  
Finished: Yes  
Enclosed: Yes  
Contiguous: Yes  
Permitted: Yes  
Wet space: No  
Addition: No  
Conversion: No

14 Floor 1 - Bedroom



Dimensions: 12'4" x 14'1"  
Area: 156 sq. ft  
Counted as living area: Yes

Heated: Yes  
Finished: Yes  
Enclosed: Yes  
Contiguous: Yes  
Permitted: Yes  
Wet space: No  
Addition: No  
Conversion: No



## Home data report

7637 Grasmere Drive, Land O'Lakes, Pasco County, Florida,  
United States, 34637

### 15 Floor 1 - Garage

---



Dimensions: 19'7" x 22'5"  
Area: 402 sq. ft  
Counted as living area: No

Heated: No  
Finished: No  
Enclosed: Yes  
Contiguous: Yes  
Permitted: Yes  
Wet space: No  
Addition: No  
Conversion: No

### 16 Floor 1 - Porch

---



Dimensions: 22'5" x 10'0"  
Area: 156 sq. ft  
Counted as living area: No

Heated: No  
Finished: No  
Enclosed: No  
Contiguous: Yes  
Permitted: Yes  
Wet space: No  
Addition: No  
Conversion: No

### 17 Floor 1 - W.I.C.

---



Dimensions: 3'9" x 4'4"  
Area: 16 sq. ft  
Counted as living area: Yes

Heated: Yes  
Finished: Yes  
Enclosed: Yes  
Contiguous: Yes  
Permitted: Yes  
Wet space: No  
Addition: No  
Conversion: No

7637 Grasmere Drive, Land O'Lakes, Pasco County, Florida,  
United States, 34637

18 Floor 1 - Living Room



Dimensions: 14'6" x 11'6"  
Area: 167 sq. ft  
Counted as living area: Yes

Heated: Yes  
Finished: Yes  
Enclosed: Yes  
Contiguous: Yes  
Permitted: Yes  
Wet space: No  
Addition: No  
Conversion: No

19 Floor 1 - Bedroom



Dimensions: 12'4" x 12'1"  
Area: 149 sq. ft  
Counted as living area: Yes

Heated: Yes  
Finished: Yes  
Enclosed: Yes  
Contiguous: Yes  
Permitted: Yes  
Wet space: No  
Addition: No  
Conversion: No

20 Floor 1 - Breakfast Nook



Dimensions: 10'11" x 10'5"  
Area: 110 sq. ft  
Counted as living area: Yes

Heated: Yes  
Finished: Yes  
Enclosed: Yes  
Contiguous: Yes  
Permitted: Yes  
Wet space: No  
Addition: No  
Conversion: No

7637 Grasmere Drive, Land O'Lakes, Pasco County, Florida,  
United States, 34637

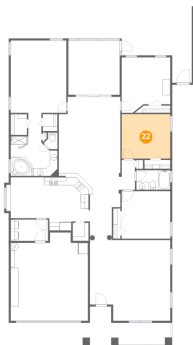
## 21 Floor 1 - Dining Room



Dimensions: 14'6" x 9'0"  
Area: 130 sq. ft  
Counted as living area: Yes

Heated: Yes  
Finished: Yes  
Enclosed: Yes  
Contiguous: Yes  
Permitted: Yes  
Wet space: No  
Addition: No  
Conversion: No

## 22 Floor 1 - Bedroom



Dimensions: 12'4" x 11'3"  
Area: 139 sq. ft  
Counted as living area: Yes

Heated: Yes  
Finished: Yes  
Enclosed: Yes  
Contiguous: Yes  
Permitted: Yes  
Wet space: No  
Addition: No  
Conversion: No

## 23 Floor 1 - Hall



Dimensions: 7'8" x 15'7"  
Area: 103 sq. ft  
Counted as living area: Yes

Heated: Yes  
Finished: Yes  
Enclosed: Yes  
Contiguous: Yes  
Permitted: Yes  
Wet space: No  
Addition: No  
Conversion: No