

Home data report

4604 3rd St, McKeesport, PA, US



Total Area: 1713 sq. ft

1st Floor: 998 sq. ft, 2nd Floor: 715 sq. ft, 3rd Floor: 0 sq. ft

Excluded: Porch 41 sq. ft, Patio 8 sq. ft, Fireplace 12 sq. ft, Low ceiling 215 sq. ft, Attic 410 sq. ft, Walls: 193 sq. ft

Property summary

 **3** Floors

 **2** Bedrooms

 **1** Bathrooms

Home data report

4604 3rd St, McKeesport, PA, US



Room dimensions

Floor 1

Total:998sqft Excluded: 49sqft

#		Dimensions	sqft	Counted as living area
1	Hall	3'3" x 27'10"	91 sq. ft	Yes
2	Room	13'4" x 10'3"	112 sq. ft	Yes
3	Bath	6'10" x 5'7"	37 sq. ft	Yes
4	Bedroom	13'6" x 11'7"	147 sq. ft	Yes
5	Foyer	5'0" x 9'7"	47 sq. ft	Yes
6	Living Room	15'0" x 14'9"	205 sq. ft	Yes
7	Kitchen	11'1" x 11'7"	86 sq. ft	Yes
8	Patio	3'10" x 2'1"	8 sq. ft	No
9	Dining Room	15'0" x 14'0"	210 sq. ft	Yes
10	Porch	5'10" x 7'0"	41 sq. ft	No



Room dimensions

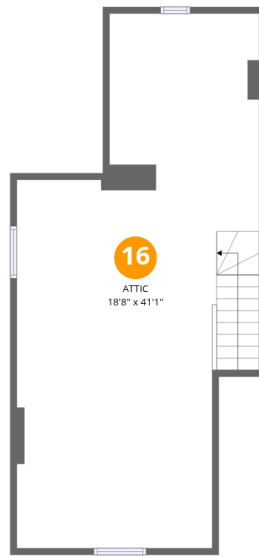
Floor 2

Total: 715 sqft Excluded: 12 sqft

#		Dimensions	sqft	Counted as living area
11	Family Room	15'0" x 14'9"	226 sq. ft	Yes
12	Laundry	6'11" x 9'5"	53 sq. ft	Yes
13	Bedroom	12'1" x 12'11"	144 sq. ft	Yes
14	Hall	7'4" x 17'7"	110 sq. ft	Yes
15	Kitchen	11'4" x 12'10"	132 sq. ft	Yes

Home data report

4604 3rd St, McKeesport, PA, US



Room dimensions

Floor 3

Total: 0sqft

Excluded: 625sqft

#		Dimensions	sqft	Counted as living area
16	Attic	18'8" x 41'1"	410 sq. ft	No

1 Floor 1 - Hall



Dimensions: 3'3" x 27'10"
Area: 91 sq. ft
Counted as living area: Yes

Heated: Yes
Finished: Yes
Enclosed: Yes
Contiguous: Yes
Permitted: Yes
Wet space: No
Addition: No
Conversion: No

2 Floor 1 - Room



Dimensions: 13'4" x 10'3"
Area: 112 sq. ft
Counted as living area: Yes

Heated: Yes
Finished: Yes
Enclosed: Yes
Contiguous: Yes
Permitted: Yes
Wet space: No
Addition: No
Conversion: No

3 Floor 1 - Bath



Dimensions: 6'10" x 5'7"
Area: 37 sq. ft
Counted as living area: Yes

Heated: Yes
Finished: Yes
Enclosed: Yes
Contiguous: Yes
Permitted: Yes
Wet space: Yes
Addition: No
Conversion: No

4 Floor 1 - Bedroom



Dimensions: 13'6" x 11'7"
Area: 147 sq. ft
Counted as living area: Yes

Heated: Yes
Finished: Yes
Enclosed: Yes
Contiguous: Yes
Permitted: Yes
Wet space: No
Addition: No
Conversion: No

5 Floor 1 - Foyer



Dimensions: 5'0" x 9'7"
Area: 47 sq. ft
Counted as living area: Yes

Heated: Yes
Finished: Yes
Enclosed: Yes
Contiguous: Yes
Permitted: Yes
Wet space: No
Addition: No
Conversion: No

6 Floor 1 - Living Room



Dimensions: 15'0" x 14'9"
Area: 205 sq. ft
Counted as living area: Yes

Heated: Yes
Finished: Yes
Enclosed: Yes
Contiguous: Yes
Permitted: Yes
Wet space: No
Addition: No
Conversion: No

7 Floor 1 - Kitchen



Dimensions: 11'1" x 11'7"
Area: 86 sq. ft
Counted as living area: Yes

Heated: Yes
Finished: Yes
Enclosed: Yes
Contiguous: Yes
Permitted: Yes
Wet space: No
Addition: No
Conversion: No

8 Floor 1 - Patio



Dimensions: 3'10" x 2'1"
Area: 8 sq. ft
Counted as living area: No

Heated: No
Finished: No
Enclosed: No
Contiguous: Yes
Permitted: Yes
Wet space: No
Addition: No
Conversion: No

9 Floor 1 - Dining Room



Dimensions: 15'0" x 14'0"
Area: 210 sq. ft
Counted as living area: Yes

Heated: Yes
Finished: Yes
Enclosed: Yes
Contiguous: Yes
Permitted: Yes
Wet space: No
Addition: No
Conversion: No

10 Floor 1 - Porch



Dimensions: 5'10" x 7'0"
Area: 41 sq. ft
Counted as living area: No

Heated: No
Finished: No
Enclosed: No
Contiguous: Yes
Permitted: Yes
Wet space: No
Addition: No
Conversion: No

11 Floor 2 - Family Room



Dimensions: 15'0" x 14'9"
Area: 226 sq. ft
Counted as living area: Yes

Heated: Yes
Finished: Yes
Enclosed: Yes
Contiguous: Yes
Permitted: Yes
Wet space: No
Addition: No
Conversion: No

12 Floor 2 - Laundry



Dimensions: 6'11" x 9'5"
Area: 53 sq. ft
Counted as living area: Yes

Heated: Yes
Finished: Yes
Enclosed: Yes
Contiguous: Yes
Permitted: Yes
Wet space: No
Addition: No
Conversion: No

13 Floor 2 - Bedroom



Dimensions: 12'1" x 12'11"
Area: 144 sq. ft
Counted as living area: Yes

Heated: Yes
Finished: Yes
Enclosed: Yes
Contiguous: Yes
Permitted: Yes
Wet space: No
Addition: No
Conversion: No

14 Floor 2 - Hall



Dimensions: 7'4" x 17'7"
Area: 110 sq. ft
Counted as living area: Yes

Heated: Yes
Finished: Yes
Enclosed: Yes
Contiguous: Yes
Permitted: Yes
Wet space: No
Addition: No
Conversion: No

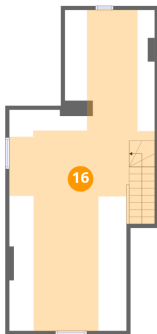
15 Floor 2 - Kitchen



Dimensions: 11'4" x 12'10"
Area: 132 sq. ft
Counted as living area: Yes

Heated: Yes
Finished: Yes
Enclosed: Yes
Contiguous: Yes
Permitted: Yes
Wet space: No
Addition: No
Conversion: No

16 Floor 3 - Attic



Dimensions: 18'8" x 41'1"
Area: 410 sq. ft
Counted as living area: No

Heated: No
Finished: No
Enclosed: Yes
Contiguous: Yes
Permitted: Yes
Wet space: No
Addition: No
Conversion: No