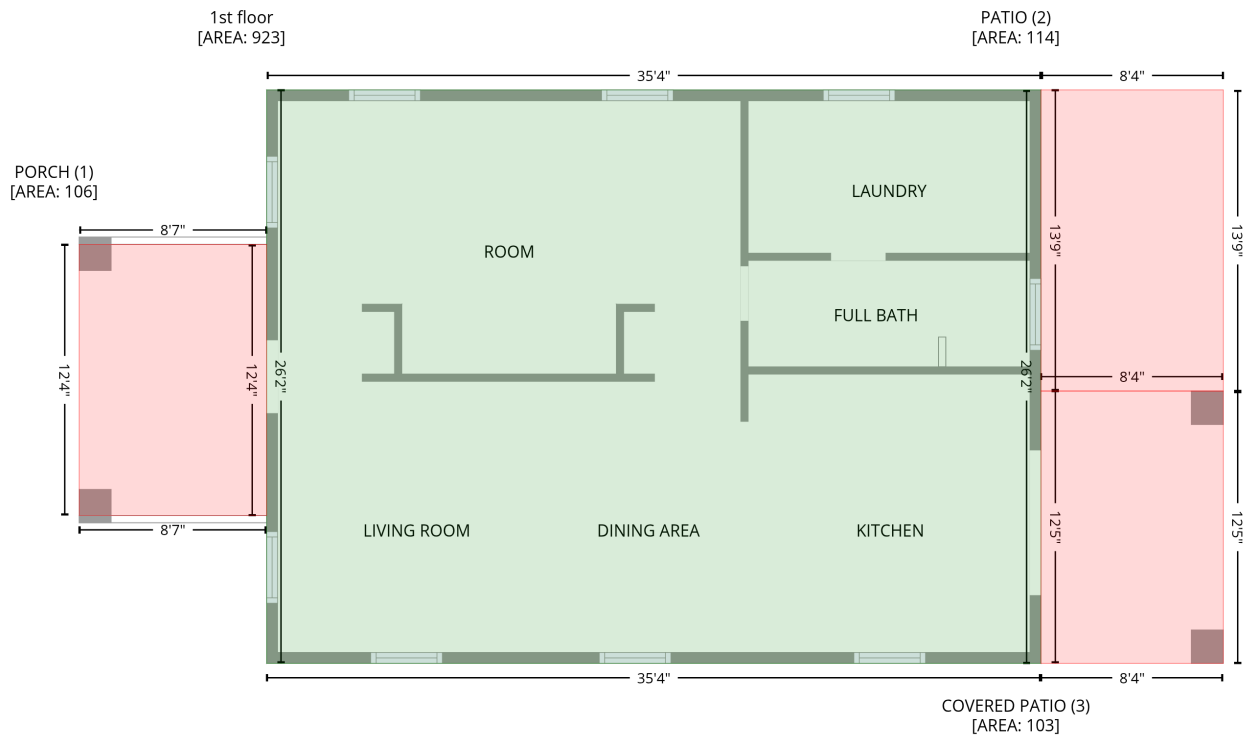


813 Walnut Avenue, Historic Wesley Heights, Charlotte, Mecklenburg County, North Carolina, United States, 28208

Gross Living Area: 923 sq. ft

Level 1



Space	Area (sq. ft)	Calculation <small>Coordinate Polygon Area Algorithm using inches</small>
1st floor (Living area)	923	$-((385.2 + 385.2) * (156.9 - 470.8) + (385.2 + -38.5) * (470.8 - 470.8) + (-38.5 + -38.5) * (470.8 - 156.9) + (-38.5 + 385.2) * (156.9 - 156.9)) * 0.5 * 0.00694$
PORCH (Non-living area)	106	$-((-38.5 + -38.5) * (241.5 - 389.9) + (-38.5 + -141.1) * (389.9 - 389.9) + (-141.1 + -141.1) * (389.9 - 241.5) + (-141.1 + -38.5) * (241.5 - 241.5)) * 0.5 * 0.00694$
PATIO (Non-living area)	114	$-((485 + 485) * (156.9 - 321.8) + (485 + 385.2) * (321.8 - 321.8) + (385.2 + 385.2) * (321.8 - 156.9) + (385.2 + 485) * (156.9 - 156.9)) * 0.5 * 0.00694$
COVERED PATIO (Non-living area)	103	$-((485 + 485) * (321.8 - 470.8) + (485 + 385.2) * (470.8 - 470.8) + (385.2 + 385.2) * (470.8 - 321.8) + (385.2 + 485) * (321.8 - 321.8)) * 0.5 * 0.00694$