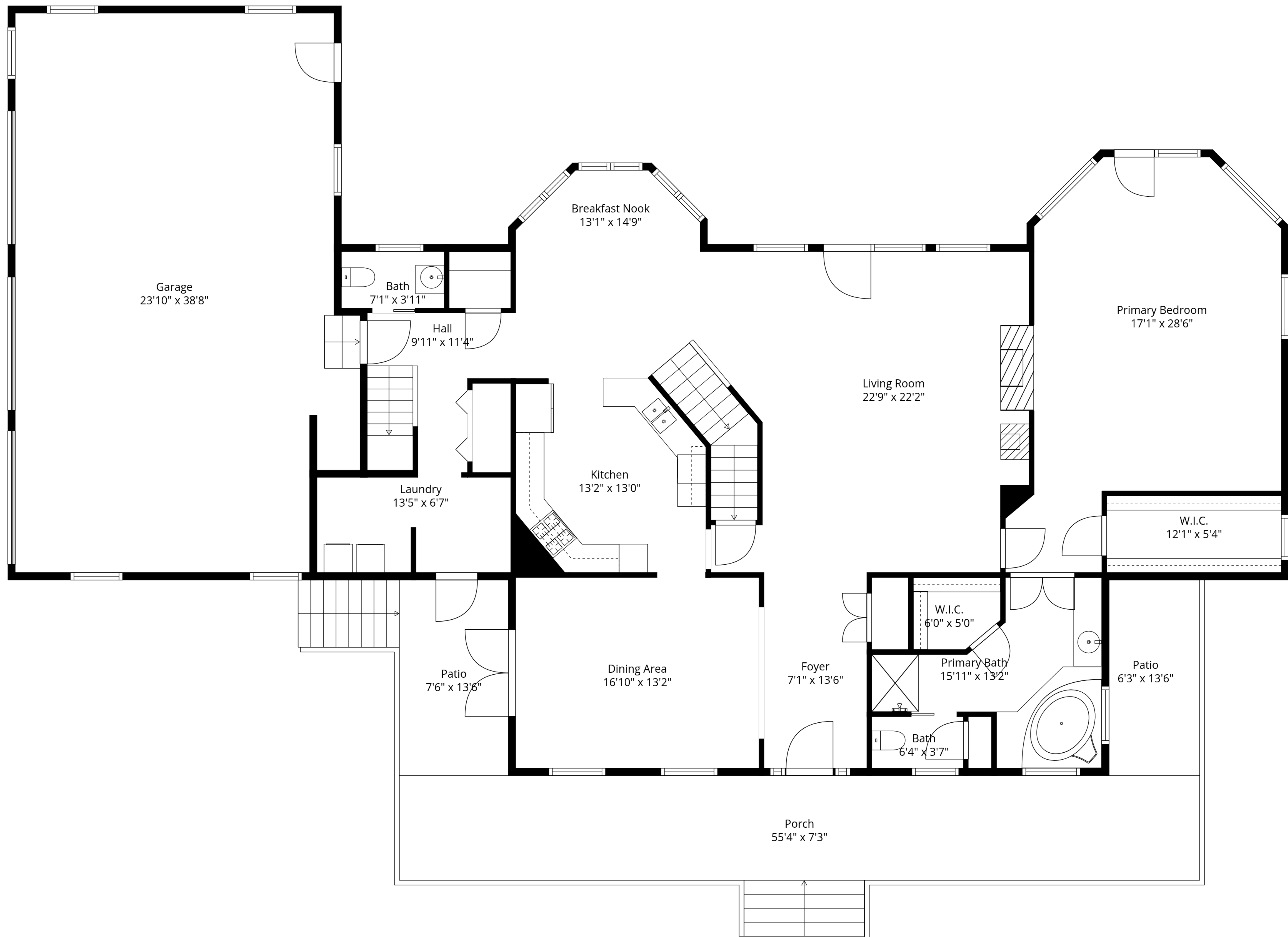


Basement
65'5" x 40'7"

TOTAL: 3896 sq. ft

Basement: 0 sq. ft, 1st floor: 2125 sq. ft, 2nd floor: 1771 sq. ft
EXCLUDED AREAS: BASEMENT: 2040 sq. ft, GARAGE: 858 sq. ft, PORCH: 433 sq. ft,
PATIO: 219 sq. ft, LOW CEILING: 215 sq. ft, OPEN TO BELOW: 476 sq. ft,
WALLS: 434 sq. ft

Measurements Are Approximate - Deemed Highly Reliable But Not Guaranteed



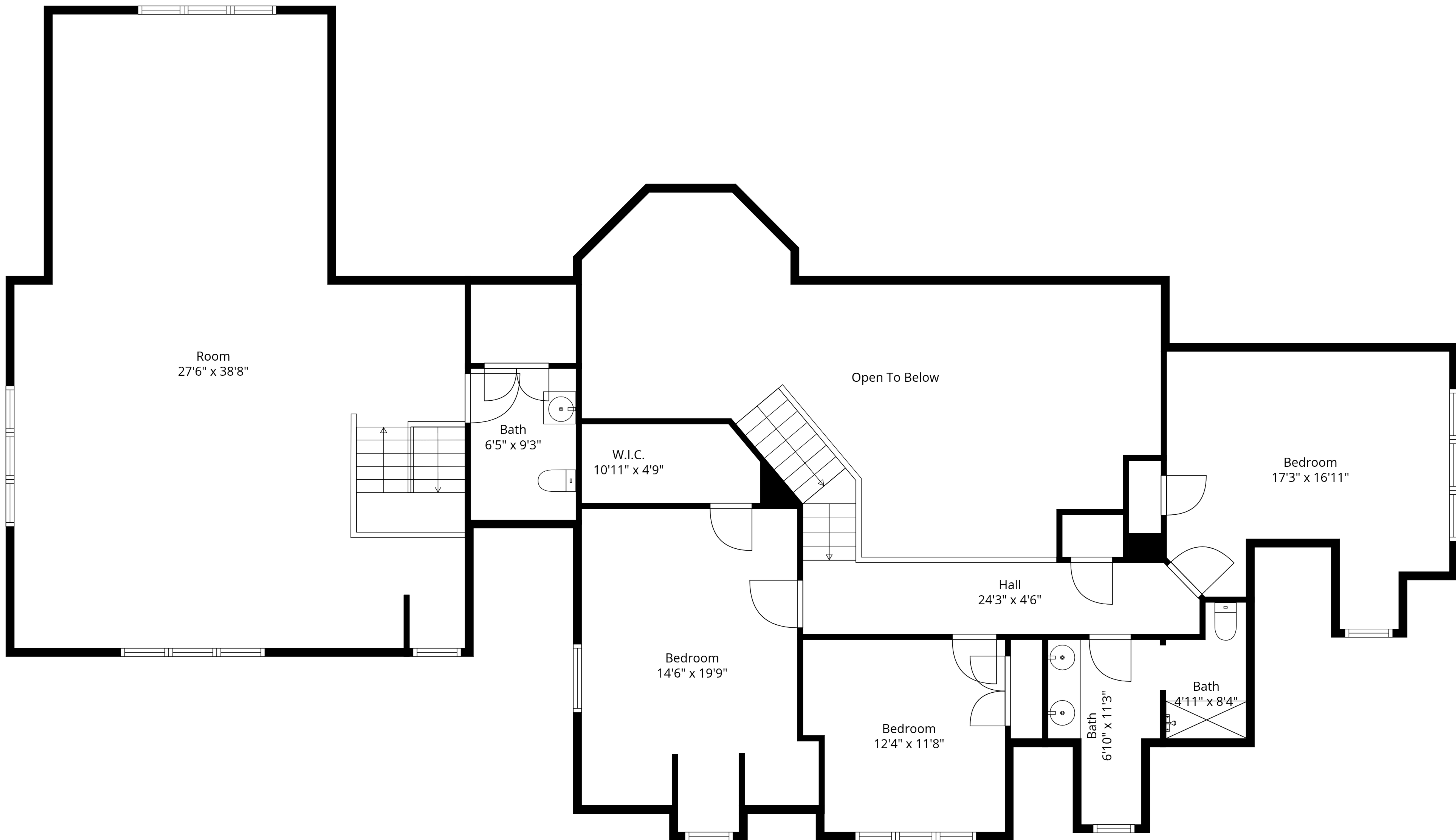
TOTAL: 3896 sq. ft

Basement: 0 sq. ft, 1st floor: 2125 sq. ft, 2nd floor: 1771 sq. ft

EXCLUDED AREAS: BASEMENT: 2040 sq. ft, GARAGE: 858 sq. ft, PORCH: 433 sq. ft,

PATIO: 219 sq. ft, LOW CEILING: 215 sq. ft, OPEN TO BELOW: 476 sq. ft,

WALLS: 434 sq. ft



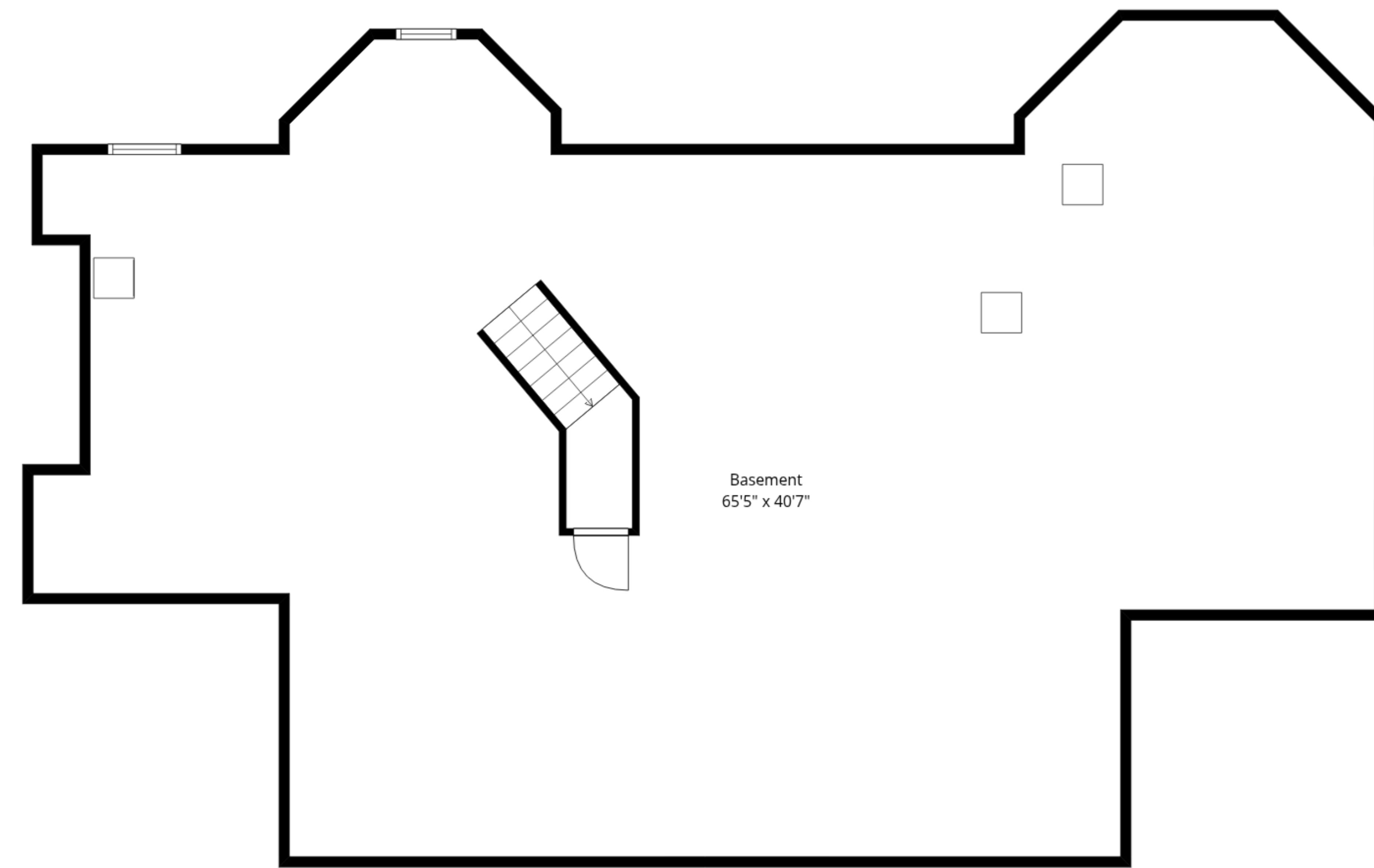
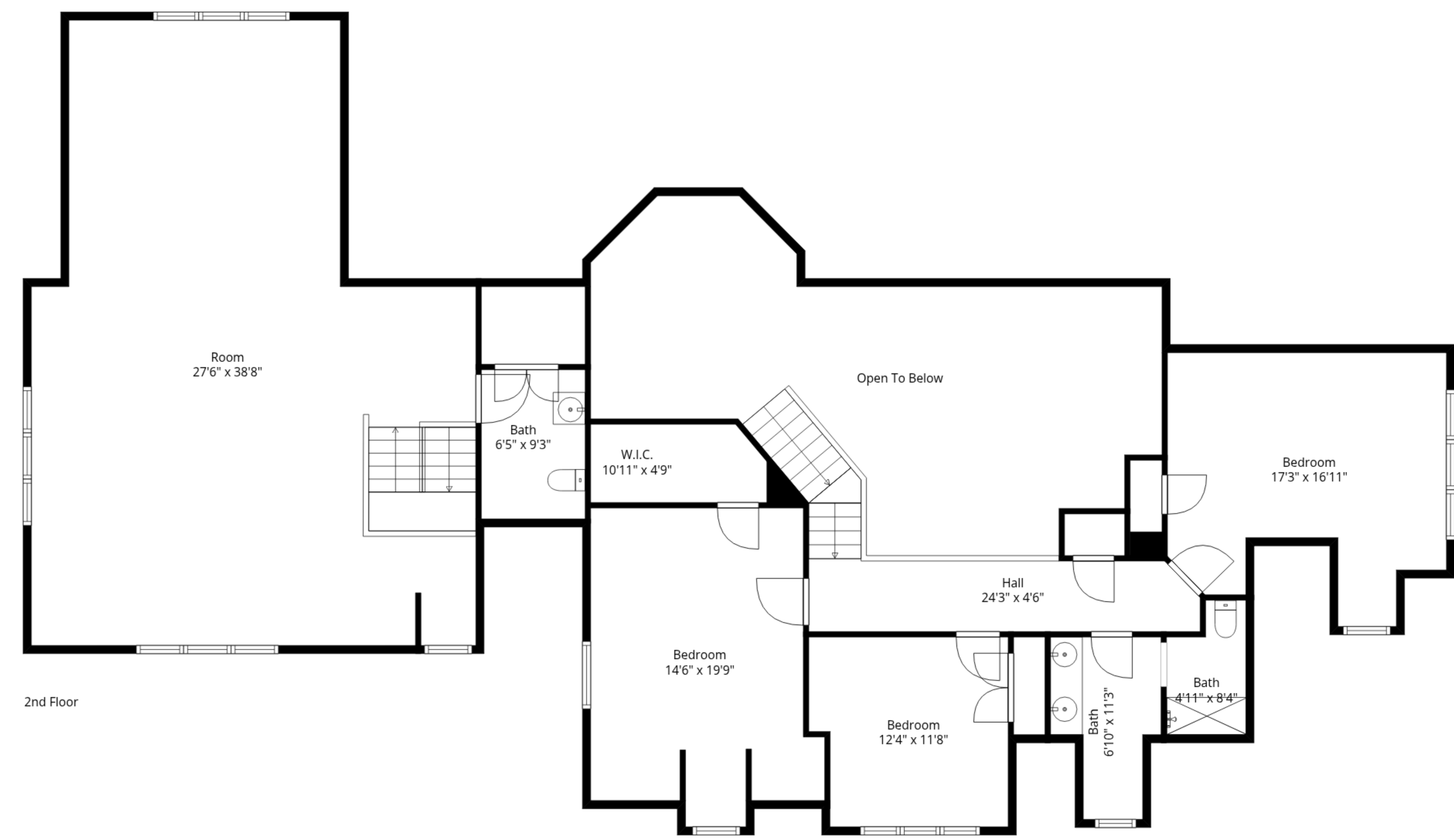
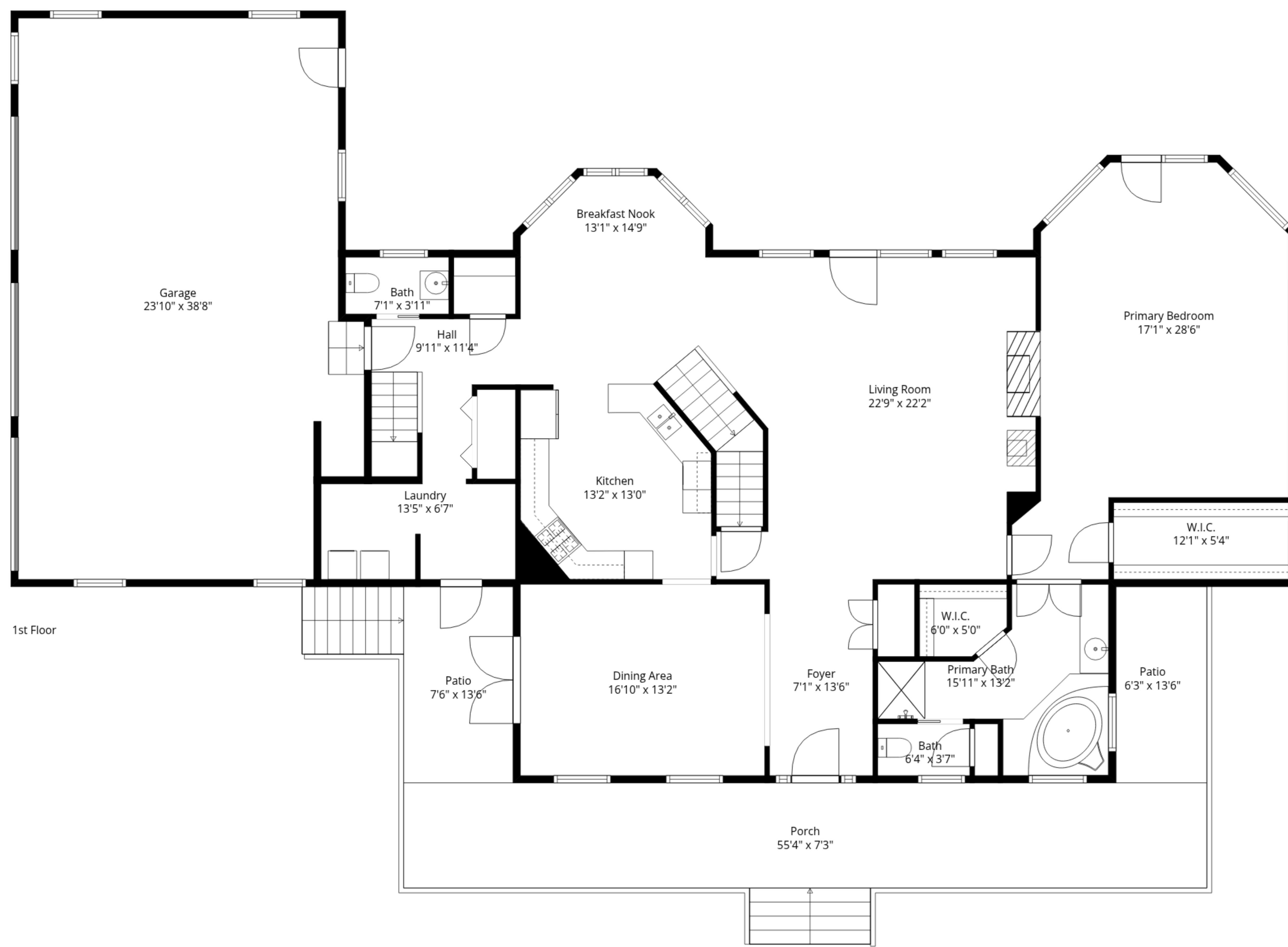
TOTAL: 3896 sq. ft

Basement: 0 sq. ft, 1st floor: 2125 sq. ft, 2nd floor: 1771 sq. ft

EXCLUDED AREAS: BASEMENT: 2040 sq. ft, GARAGE: 858 sq. ft, PORCH: 433 sq. ft,

PATIO: 219 sq. ft, LOW CEILING: 215 sq. ft, OPEN TO BELOW: 476 sq. ft,

WALLS: 434 sq. ft



TOTAL: 3896 sq. ft
 Basement: 0 sq. ft, 1st floor: 2125 sq. ft, 2nd floor: 1771 sq. ft
 EXCLUDED AREAS: BASEMENT: 2040 sq. ft, GARAGE: 858 sq. ft, PORCH: 433 sq. ft,
 PATIO: 219 sq. ft, LOW CEILING: 215 sq. ft, OPEN TO BELOW: 476 sq. ft,
 WALLS: 434 sq. ft

Measurements Are Approximate - Deemed Highly Reliable But Not Guaranteed