

Home report

**8412 Brittewood Circle, Knollwood, Mechanicsville, Hanover
County, Virginia, United States, 23116**



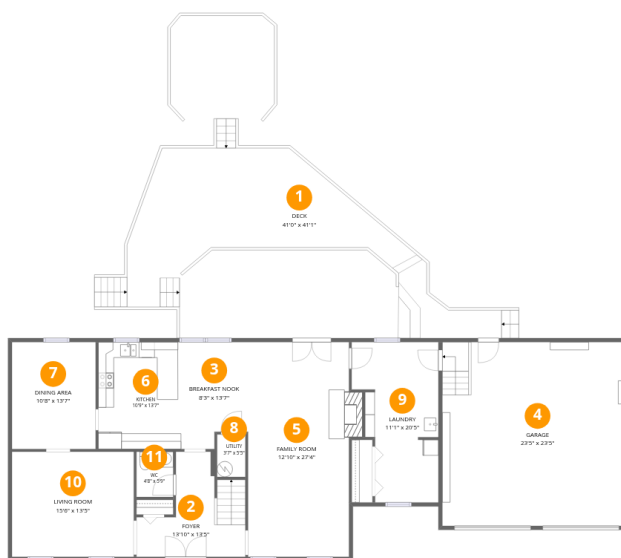
1
Half baths



1
Garages

Home report

8412 Britewood Circle, Knollwood, Mechanicsville, Hanover County, Virginia, United States, 23116



Room dimensions

Floor 1

Total:1404sqft

Excluded: 1525sqft

#		Dimensions	sqft	Counted as living area
1	Deck	41'0" x 41'11"	978 sq. ft	No
2	Foyer	13'10" x 13'5"	129 sq. ft	Yes
3	Breakfast Nook	8'3" x 13'7"	103 sq. ft	Yes
4	Garage	23'5" x 23'5"	547 sq. ft	No
5	Family Room	12'10" x 27'4"	361 sq. ft	Yes
6	Kitchen	10'9" x 13'7"	147 sq. ft	Yes
7	Dining Area	10'8" x 13'7"	145 sq. ft	Yes
8	Utility	3'7" x 5'5"	20 sq. ft	Yes
9	Laundry	11'1" x 20'5"	189 sq. ft	Yes
10	Living Room	15'6" x 13'5"	208 sq. ft	Yes
11	WC	4'8" x 5'9"	27 sq. ft	Yes

Home report

8412 Brittewood Circle, Knollwood, Mechanicsville, Hanover County, Virginia, United States, 23116



Room dimensions

Floor 2

Total:1545sqft Excluded: 187sqft

#		Dimensions	sqft	Counted as living area
12	Bedroom	19'7" x 23'5"	368 sq. ft	Yes
13	Bedroom	12'5" x 13'7"	156 sq. ft	Yes
14	Laundry	5'8" x 4'4"	24 sq. ft	Yes
15	Room	11'1" x 18'9"	187 sq. ft	No
16	W.I.C.	5'2" x 5'0"	26 sq. ft	Yes
17	Bedroom	11'10" x 13'5"	158 sq. ft	Yes
18	Bath	7'8" x 9'7"	55 sq. ft	Yes
19	Bath	7'5" x 5'0"	37 sq. ft	Yes
20	Bedroom	13'7" x 13'5"	170 sq. ft	Yes
21	Bath	18'8" x 4'4"	72 sq. ft	Yes
22	Hall	20'4" x 4'3"	96 sq. ft	Yes

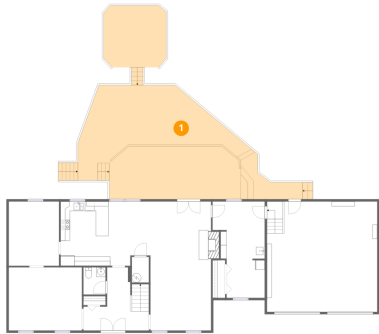
Home report

8412 Brittewood Circle, Knollwood, Mechanicsville, Hanover County, Virginia, United States, 23116

#		Dimensions	sqft	Counted as living area
23	Primary Bedroom	12'10" x 17'5"	223 sq. ft	Yes
24	W.I.C.	5'6" x 5'0"	28 sq. ft	Yes

8412 Brittewood Circle, Knollwood, Mechanicsville, Hanover County, Virginia, United States, 23116

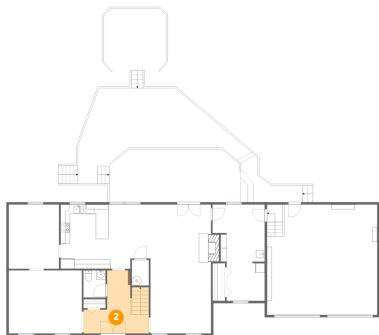
1 Floor 1 - Deck



Dimensions: 41'0" x 41'1"
Area: 978 sq. ft
Counted as living area: No

Heated: No
Finished: No
Enclosed: No
Contiguous: Yes
Permitted: Yes
Wet space: No
Addition: No
Conversion: No

2 Floor 1 - Foyer

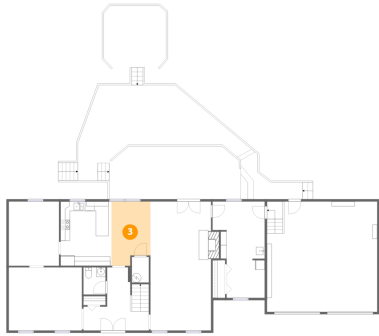


Dimensions: 13'10" x 13'5"
Area: 129 sq. ft
Counted as living area: Yes

Heated: Yes
Finished: Yes
Enclosed: Yes
Contiguous: Yes
Permitted: Yes
Wet space: No
Addition: No
Conversion: No

8412 Brittewood Circle, Knollwood, Mechanicsville, Hanover County, Virginia, United States, 23116

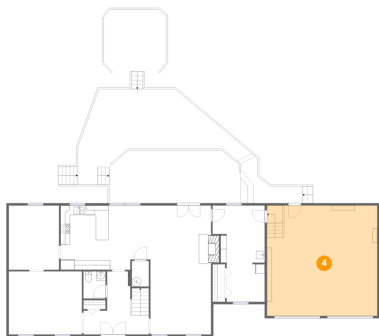
3 Floor 1 - Breakfast Nook



Dimensions: 8'3" x 13'7"
Area: 103 sq. ft
Counted as living area: Yes

Heated: Yes
Finished: Yes
Enclosed: Yes
Contiguous: Yes
Permitted: Yes
Wet space: No
Addition: No
Conversion: No

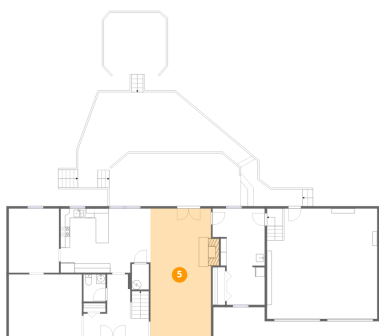
4 Floor 1 - Garage



Dimensions: 23'5" x 23'5"
Area: 547 sq. ft
Counted as living area: No

Heated: No
Finished: No
Enclosed: Yes
Contiguous: Yes
Permitted: Yes
Wet space: No
Addition: No
Conversion: No

5 Floor 1 - Family Room

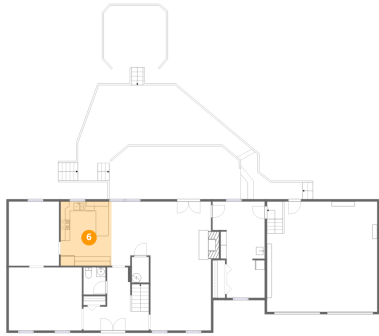


Dimensions: 12'10" x 27'4"
Area: 361 sq. ft
Counted as living area: Yes

Heated: Yes
Finished: Yes
Enclosed: Yes
Contiguous: Yes
Permitted: Yes
Wet space: No
Addition: No
Conversion: No

8412 Brittewood Circle, Knollwood, Mechanicsville, Hanover County, Virginia, United States, 23116

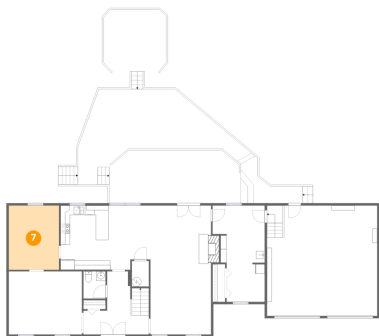
6 Floor 1 - Kitchen



Dimensions: 10'9" x 13'7"
Area: 147 sq. ft
Counted as living area: Yes

Heated: Yes
Finished: Yes
Enclosed: Yes
Contiguous: Yes
Permitted: Yes
Wet space: No
Addition: No
Conversion: No

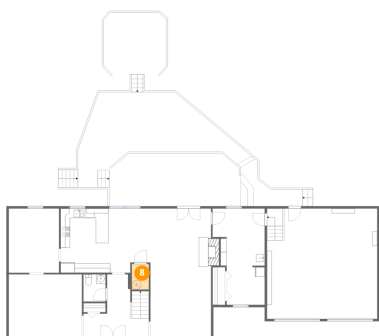
7 Floor 1 - Dining Area



Dimensions: 10'8" x 13'7"
Area: 145 sq. ft
Counted as living area: Yes

Heated: Yes
Finished: Yes
Enclosed: Yes
Contiguous: Yes
Permitted: Yes
Wet space: No
Addition: No
Conversion: No

8 Floor 1 - Utility

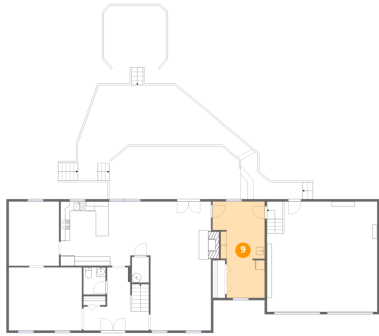


Dimensions: 3'7" x 5'5"
Area: 20 sq. ft
Counted as living area: Yes

Heated: Yes
Finished: Yes
Enclosed: Yes
Contiguous: Yes
Permitted: Yes
Wet space: No
Addition: No
Conversion: No

8412 Brittewood Circle, Knollwood, Mechanicsville, Hanover County, Virginia, United States, 23116

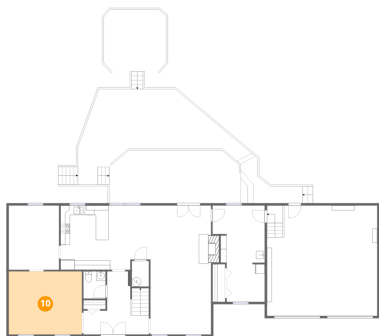
9 Floor 1 - Laundry



Dimensions: 11'1" x 20'5"
Area: 189 sq. ft
Counted as living area: Yes

Heated: Yes
Finished: Yes
Enclosed: Yes
Contiguous: Yes
Permitted: Yes
Wet space: No
Addition: No
Conversion: No

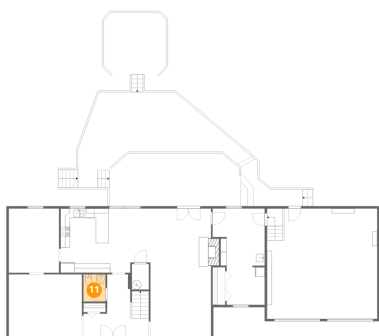
10 Floor 1 - Living Room



Dimensions: 15'6" x 13'5"
Area: 208 sq. ft
Counted as living area: Yes

Heated: Yes
Finished: Yes
Enclosed: Yes
Contiguous: Yes
Permitted: Yes
Wet space: No
Addition: No
Conversion: No

11 Floor 1 - WC



Dimensions: 4'8" x 5'9"
Area: 27 sq. ft
Counted as living area: Yes

Heated: Yes
Finished: Yes
Enclosed: Yes
Contiguous: Yes
Permitted: Yes
Wet space: Yes
Addition: No
Conversion: No

8412 Brittewood Circle, Knollwood, Mechanicsville, Hanover County, Virginia, United States, 23116

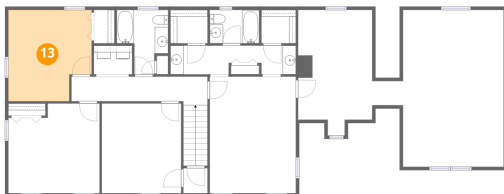
12 Floor 2 - Bedroom



Dimensions: 19'7" x 23'5"
Area: 368 sq. ft
Counted as living area: No

Heated: Yes
Finished: Yes
Enclosed: Yes
Contiguous: No
Permitted: Yes
Wet space: No
Addition: No
Conversion: No

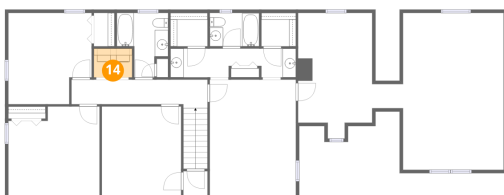
13 Floor 2 - Bedroom



Dimensions: 12'5" x 13'7"
Area: 156 sq. ft
Counted as living area: Yes

Heated: Yes
Finished: Yes
Enclosed: Yes
Contiguous: Yes
Permitted: Yes
Wet space: No
Addition: No
Conversion: No

14 Floor 2 - Laundry



Dimensions: 5'8" x 4'4"
Area: 24 sq. ft
Counted as living area: Yes

Heated: Yes
Finished: Yes
Enclosed: Yes
Contiguous: Yes
Permitted: Yes
Wet space: No
Addition: No
Conversion: No

8412 Brittewood Circle, Knollwood, Mechanicsville, Hanover County, Virginia, United States, 23116

15 Floor 2 - Room



Dimensions: 11'1" x 18'9"
Area: 187 sq. ft
Counted as living area: No

Heated: Yes
Finished: No
Enclosed: Yes
Contiguous: Yes
Permitted: Yes
Wet space: No
Addition: No
Conversion: No

16 Floor 2 - W.I.C.



Dimensions: 5'2" x 5'0"
Area: 26 sq. ft
Counted as living area: Yes

Heated: Yes
Finished: Yes
Enclosed: Yes
Contiguous: Yes
Permitted: Yes
Wet space: No
Addition: No
Conversion: No

17 Floor 2 - Bedroom



Dimensions: 11'10" x 13'5"
Area: 158 sq. ft
Counted as living area: Yes

Heated: Yes
Finished: Yes
Enclosed: Yes
Contiguous: Yes
Permitted: Yes
Wet space: No
Addition: No
Conversion: No

8412 Brittewood Circle, Knollwood, Mechanicsville, Hanover County, Virginia, United States, 23116

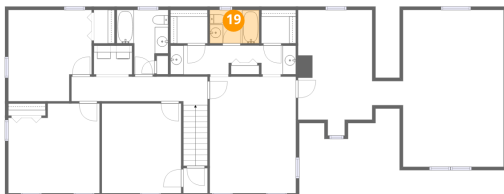
18 Floor 2 - Bath



Dimensions: 7'8" x 9'7"
Area: 55 sq. ft
Counted as living area: Yes

Heated: Yes
Finished: Yes
Enclosed: Yes
Contiguous: Yes
Permitted: Yes
Wet space: Yes
Addition: No
Conversion: No

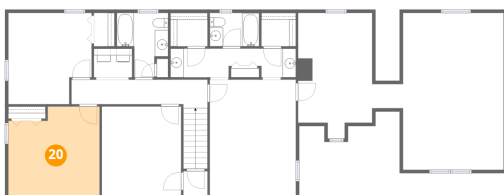
19 Floor 2 - Bath



Dimensions: 7'5" x 5'0"
Area: 37 sq. ft
Counted as living area: Yes

Heated: Yes
Finished: Yes
Enclosed: Yes
Contiguous: Yes
Permitted: Yes
Wet space: Yes
Addition: No
Conversion: No

20 Floor 2 - Bedroom



Dimensions: 13'7" x 13'5"
Area: 170 sq. ft
Counted as living area: Yes

Heated: Yes
Finished: Yes
Enclosed: Yes
Contiguous: Yes
Permitted: Yes
Wet space: No
Addition: No
Conversion: No

8412 Brittewood Circle, Knollwood, Mechanicsville, Hanover County, Virginia, United States, 23116

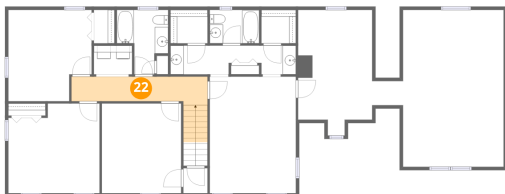
21 Floor 2 - Bath



Dimensions: 18'8" x 4'4"
Area: 72 sq. ft
Counted as living area: Yes

Heated: Yes
Finished: Yes
Enclosed: Yes
Contiguous: Yes
Permitted: Yes
Wet space: Yes
Addition: No
Conversion: No

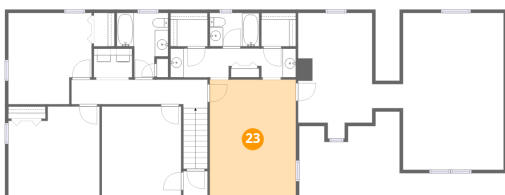
22 Floor 2 - Hall



Dimensions: 20'4" x 4'3"
Area: 96 sq. ft
Counted as living area: Yes

Heated: Yes
Finished: Yes
Enclosed: Yes
Contiguous: Yes
Permitted: Yes
Wet space: No
Addition: No
Conversion: No

23 Floor 2 - Primary Bedroom



Dimensions: 12'10" x 17'5"
Area: 223 sq. ft
Counted as living area: Yes

Heated: Yes
Finished: Yes
Enclosed: Yes
Contiguous: Yes
Permitted: Yes
Wet space: No
Addition: No
Conversion: No

Home report

8412 Brittewood Circle, Knollwood, Mechanicsville, Hanover
County, Virginia, United States, 23116

24 Floor 2 - W.I.C.



Dimensions: 5'6" x 5'0"
Area: 28 sq. ft
Counted as living area: Yes

Heated: Yes
Finished: Yes
Enclosed: Yes
Contiguous: Yes
Permitted: Yes
Wet space: No
Addition: No
Conversion: No