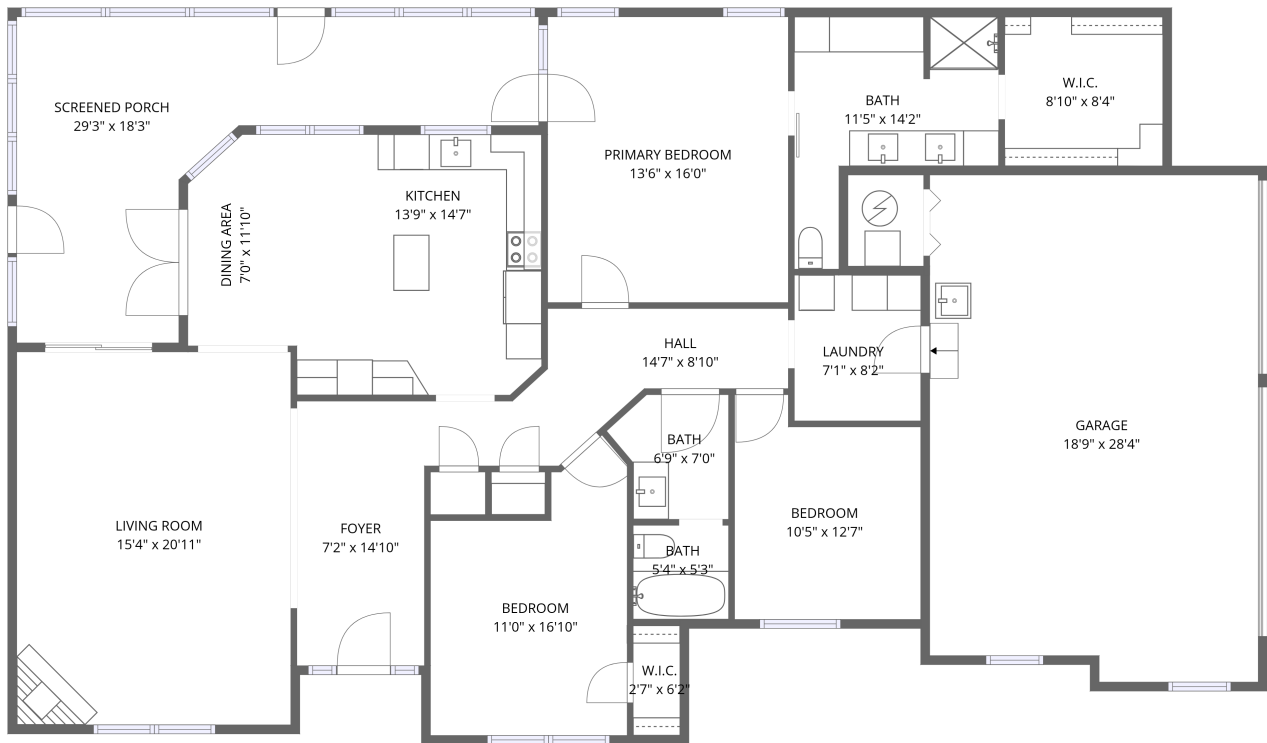


Home data report

3737 Apple Valley Dr, Howard, OH, US



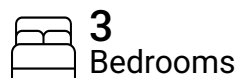
1st floor

Total Area: 1700 sq. ft

1st Floor: 1700 sq. ft

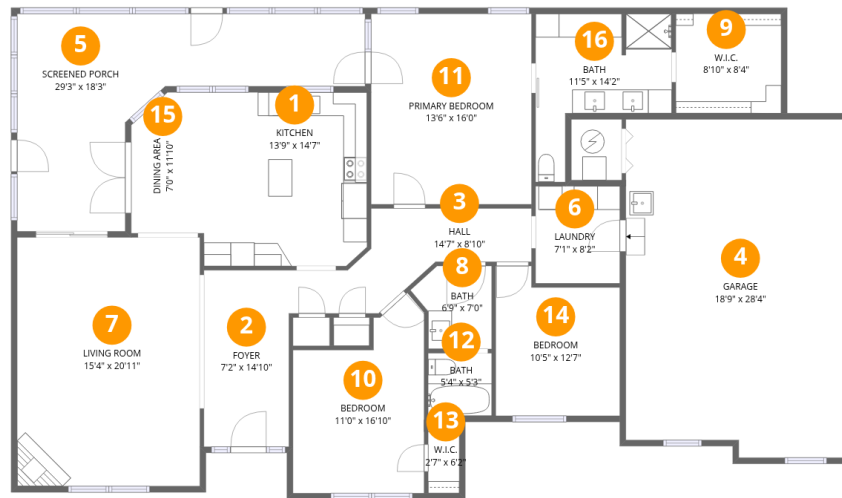
Excluded: Screened porch 294 sq. ft, Garage 510 sq. ft, Walls: 165 sq. ft

Property summary



Home data report

3737 Apple Valley Dr, Howard, OH, US



Room dimensions

Floor 1

Total: 1700sqft

Excluded: 804sqft

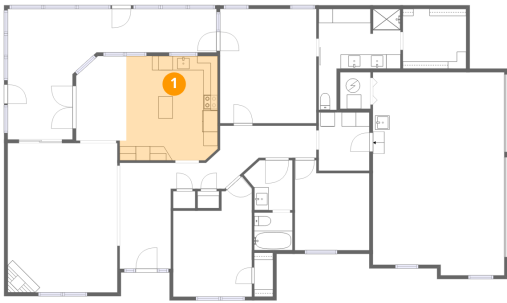
#		Dimensions	sqft	Counted as living area
1	Kitchen	13'9" x 14'7"	188 sq. ft	Yes
2	Foyer	7'2" x 14'10"	106 sq. ft	Yes
3	Hall	14'7" x 8'10"	100 sq. ft	Yes
4	Garage	18'9" x 28'4"	510 sq. ft	No
5	Screened Porch	29'3" x 18'3"	294 sq. ft	No
6	Laundry	7'1" x 8'2"	58 sq. ft	Yes
7	Living Room	15'4" x 20'11"	321 sq. ft	Yes
8	Bath	6'9" x 7'0"	39 sq. ft	Yes
9	W.I.C.	8'10" x 8'4"	74 sq. ft	Yes
10	Bedroom	11'0" x 16'10"	148 sq. ft	Yes
11	Primary Bedroom	13'6" x 16'0"	216 sq. ft	Yes

Home data report

3737 Apple Valley Dr,Howard,OH,US

#		Dimensions	sqft	Counted as living area
12	Bath	5'4" x 5'3"	28 sq. ft	Yes
13	W.I.C.	2'7" x 6'2"	16 sq. ft	Yes
14	Bedroom	10'5" x 12'7"	118 sq. ft	Yes
15	Dining Area	7'0" x 11'10"	79 sq. ft	Yes
16	Bath	11'5" x 14'2"	109 sq. ft	Yes

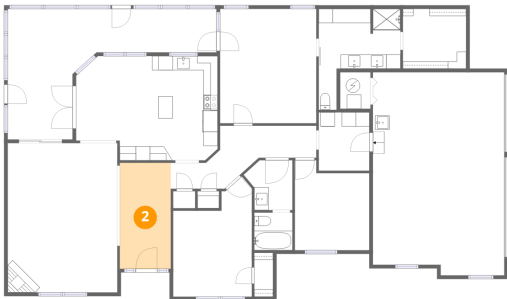
1 Floor 1 - Kitchen



Dimensions: 13'9" x 14'7"
Area: 188 sq. ft
Counted as living area: Yes

Heated: Yes
Finished: Yes
Enclosed: Yes
Contiguous: Yes
Permitted: Yes
Wet space: No
Addition: No
Conversion: No

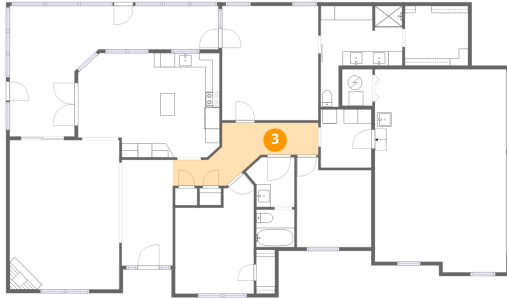
2 Floor 1 - Foyer



Dimensions: 7'2" x 14'10"
Area: 106 sq. ft
Counted as living area: Yes

Heated: Yes
Finished: Yes
Enclosed: Yes
Contiguous: Yes
Permitted: Yes
Wet space: No
Addition: No
Conversion: No

3 Floor 1 - Hall



Dimensions: 14'7" x 8'10"
Area: 100 sq. ft
Counted as living area: Yes

Heated: Yes
Finished: Yes
Enclosed: Yes
Contiguous: Yes
Permitted: Yes
Wet space: No
Addition: No
Conversion: No

4 Floor 1 - Garage



Dimensions: 18'9" x 28'4"
Area: 510 sq. ft
Counted as living area: No

Heated: No
Finished: No
Enclosed: Yes
Contiguous: Yes
Permitted: Yes
Wet space: No
Addition: No
Conversion: No

5 Floor 1 - Screened Porch



Dimensions: 29'3" x 18'3"
Area: 294 sq. ft
Counted as living area: No

Heated: No
Finished: No
Enclosed: No
Contiguous: Yes
Permitted: Yes
Wet space: No
Addition: No
Conversion: No

6 Floor 1 - Laundry



Dimensions: 7'1" x 8'2"
Area: 58 sq. ft
Counted as living area: Yes

Heated: Yes
Finished: Yes
Enclosed: Yes
Contiguous: Yes
Permitted: Yes
Wet space: No
Addition: No
Conversion: No

7 Floor 1 - Living Room



Dimensions: 15'4" x 20'11"
Area: 321 sq. ft
Counted as living area: Yes

Heated: Yes
Finished: Yes
Enclosed: Yes
Contiguous: Yes
Permitted: Yes
Wet space: No
Addition: No
Conversion: No

8 Floor 1 - Bath



Dimensions: 6'9" x 7'0"
Area: 39 sq. ft
Counted as living area: Yes

Heated: Yes
Finished: Yes
Enclosed: Yes
Contiguous: Yes
Permitted: Yes
Wet space: Yes
Addition: No
Conversion: No

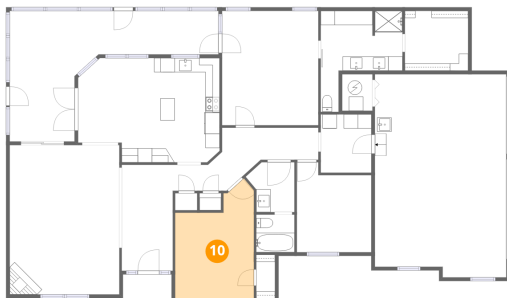
9 Floor 1 - W.I.C.



Dimensions: 8'10" x 8'4"
Area: 74 sq. ft
Counted as living area: Yes

Heated: Yes
Finished: Yes
Enclosed: Yes
Contiguous: Yes
Permitted: Yes
Wet space: No
Addition: No
Conversion: No

10 Floor 1 - Bedroom



Dimensions: 11'0" x 16'10"
Area: 148 sq. ft
Counted as living area: Yes

Heated: Yes
Finished: Yes
Enclosed: Yes
Contiguous: Yes
Permitted: Yes
Wet space: No
Addition: No
Conversion: No

11 Floor 1 - Primary Bedroom



Dimensions: 13'6" x 16'0"
Area: 216 sq. ft
Counted as living area: Yes

Heated: Yes
Finished: Yes
Enclosed: Yes
Contiguous: Yes
Permitted: Yes
Wet space: No
Addition: No
Conversion: No

12 Floor 1 - Bath



Dimensions: 5'4" x 5'3"
Area: 28 sq. ft
Counted as living area: Yes

Heated: Yes
Finished: Yes
Enclosed: Yes
Contiguous: Yes
Permitted: Yes
Wet space: Yes
Addition: No
Conversion: No

13 Floor 1 - W.I.C.



Dimensions: 2'7" x 6'2"
Area: 16 sq. ft
Counted as living area: Yes

Heated: Yes
Finished: Yes
Enclosed: Yes
Contiguous: Yes
Permitted: Yes
Wet space: No
Addition: No
Conversion: No

14 Floor 1 - Bedroom



Dimensions: 10'5" x 12'7"
Area: 118 sq. ft
Counted as living area: Yes

Heated: Yes
Finished: Yes
Enclosed: Yes
Contiguous: Yes
Permitted: Yes
Wet space: No
Addition: No
Conversion: No

15 Floor 1 - Dining Area



Dimensions: 7'0" x 11'10"
Area: 79 sq. ft
Counted as living area: Yes

Heated: Yes
Finished: Yes
Enclosed: Yes
Contiguous: Yes
Permitted: Yes
Wet space: No
Addition: No
Conversion: No

16 Floor 1 - Bath



Dimensions: 11'5" x 14'2"
Area: 109 sq. ft
Counted as living area: Yes

Heated: Yes
Finished: Yes
Enclosed: Yes
Contiguous: Yes
Permitted: Yes
Wet space: Yes
Addition: No
Conversion: No