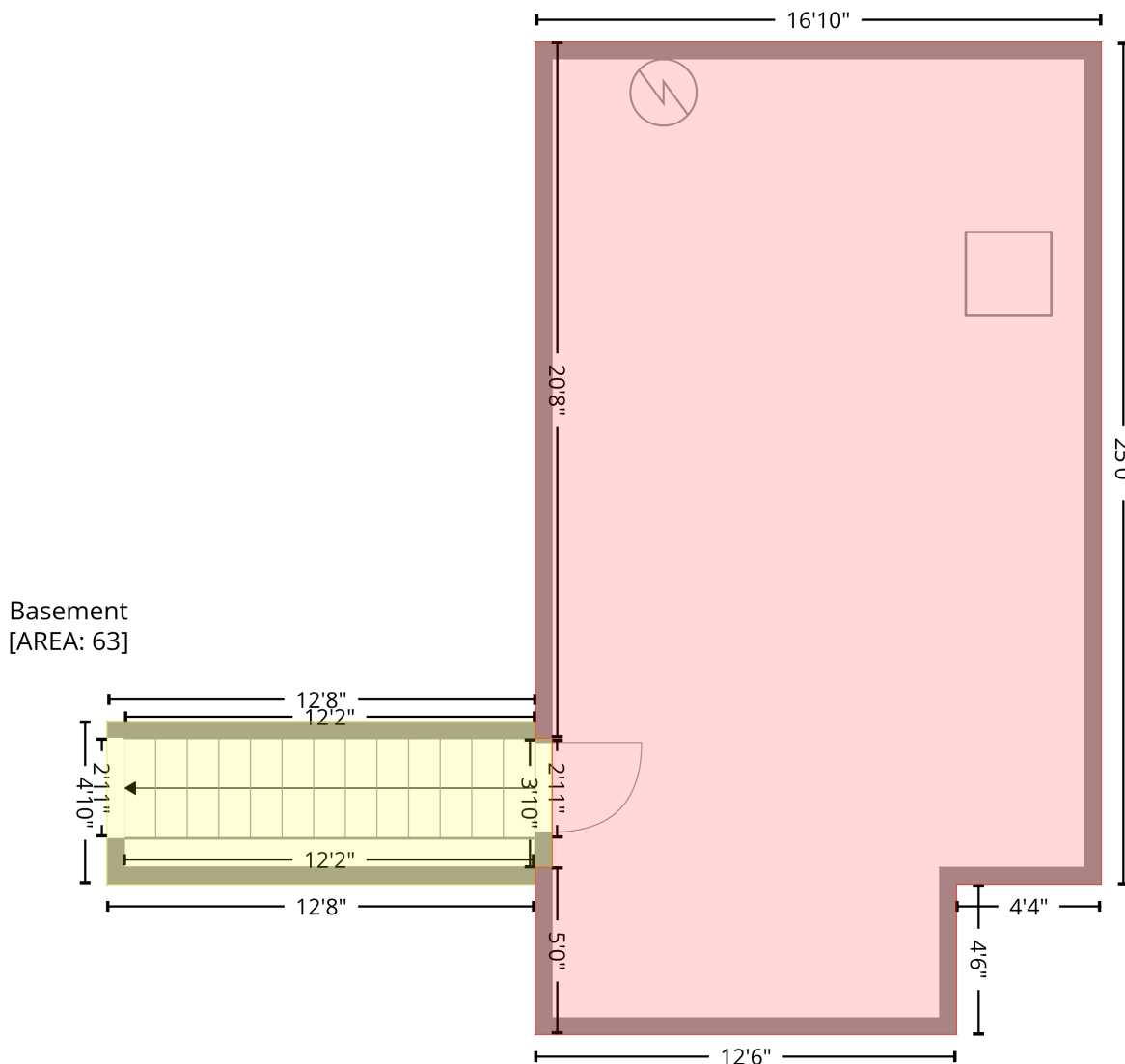


737 Hertford Rd, Winston-Salem, NC, US

Gross Living Area: 2403 sq. ft

Level 1 - Below Grade

BASEMENT (1)
[AREA: 474]



Space	Area (sq. ft)	Calculation
Basement (Living area)	63	Coordinate Polygon Area Algorithm using inches $-((372.5 + 372.5) * (847.7 - 853.7) + (372.5 + 378.5) * (853.7 - 853.7) + (378.5 + 378.5) * (853.7 - 899.7) + (378.5 + 372.5) * (899.7 - 899.7) + (372.5 + 372.5) * (899.7 - 905.7) + (372.5 + 220.1) * (905.7 - 905.7) + (220.1 + 220.1) * (905.7 - 847.7) + (220.1 + 372.5) * (847.7 - 847.7)) * 0.5 * 0.00694$

737 Hertford Rd, Winston-Salem, NC, US

Gross Living Area: 2403 sq. ft

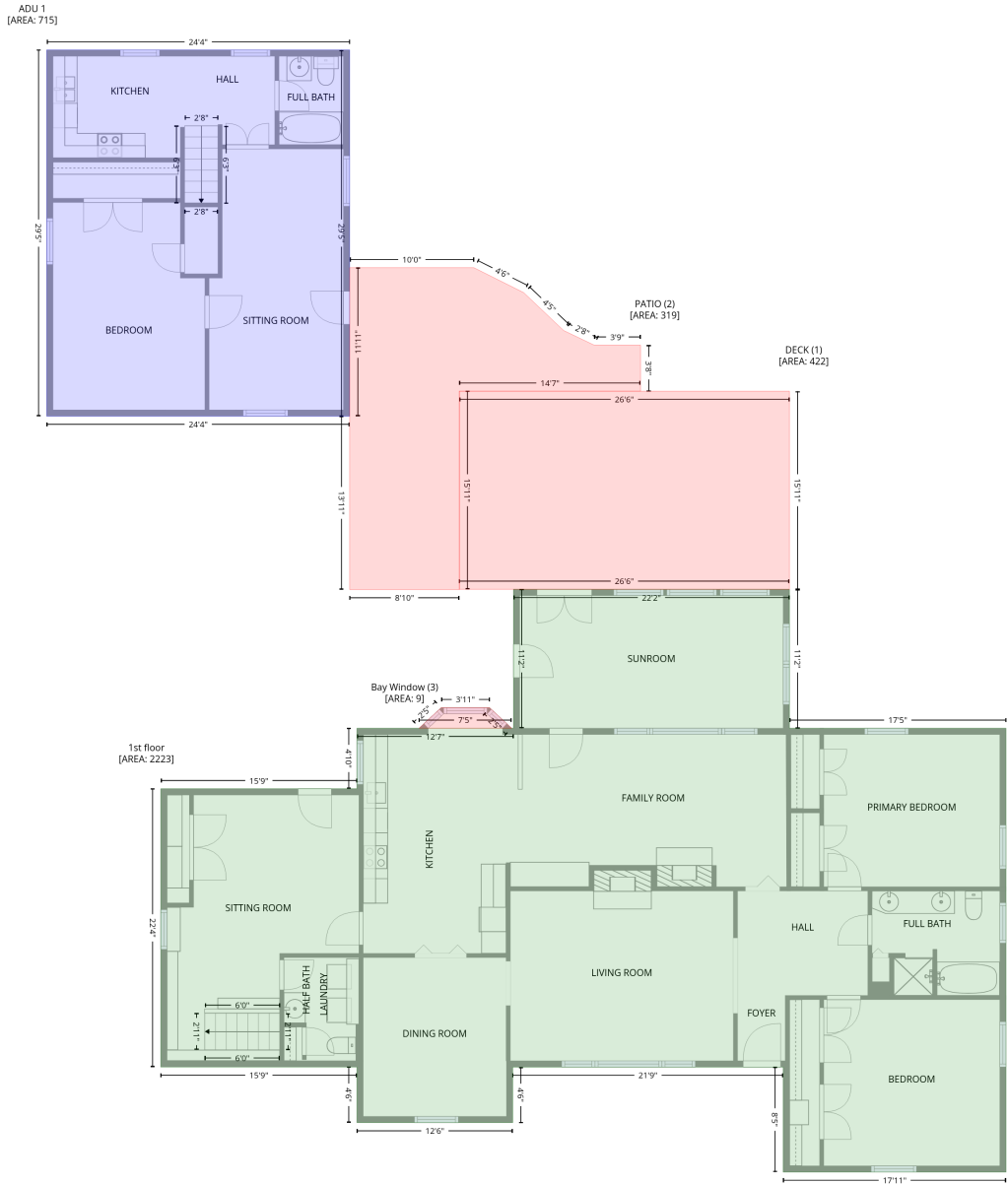
Level 1 - Below Grade

Space	Area (sq. ft)	Calculation <small>Coordinate Polygon Area Algorithm using inches</small>
BASEMENT (Non-living area)	474	$-((574.2 + 574.2) * (605.6 - 905.7) + (574.2 + 522.6) * (905.7 - 905.7) + (522.6 + 522.6) * (905.7 - 959.3) + (522.6 + 372.5) * (959.3 - 959.3) + (372.5 + 372.5) * (959.3 - 899.7) + (372.5 + 378.5) * (899.7 - 899.7) + (378.5 + 378.5) * (899.7 - 853.7) + (378.5 + 372.5) * (853.7 - 853.7) + (372.5 + 372.5) * (853.7 - 605.6) + (372.5 + 574.2) * (605.6 - 605.6)) * 0.5 * 0.00694$

737 Hertford Rd, Winston-Salem, NC, US

Gross Living Area: 2403 sq. ft

Level 2



Space	Area (sq. ft)	Calculation
1st floor (Living area)	2223	Coordinate Polygon Area Algorithm using inches $-((789.2 + 789.2) * (445.4 - 579.2) + (789.2 + 997.8) * (579.2 - 579.2) + (997.8 + 997.8) * (579.2 - 1006.9) + (997.8 + 783.2) * (1006.9 - 1006.9) + (783.2 + 783.2) * (1006.9 - 905.7) + (783.2 + 522.6) * (905.7 - 905.7) + (522.6 + 522.6) * (905.7 - 959.3) + (522.6 + 372.5) * (959.3 - 959.3) + (372.5 + 372.5) * (959.3 - 905.6) + (372.5 + 183.6) * (905.6 - 905.6) + (183.6 + 183.6) * (905.6 - 637.5) + (183.6 + 372.5) * (637.5 - 637.5) + (372.5 + 372.5) * (637.5 - 579.2) + (372.5 + 523.3) * (579.2 - 579.2) + (523.3 + 523.3) * (579.2 - 445.4) + (523.3 + 789.2) * (445.4 - 445.4)) * 0.5 * 0.00694$

737 Hertford Rd, Winston-Salem, NC, US

Gross Living Area: 2403 sq. ft

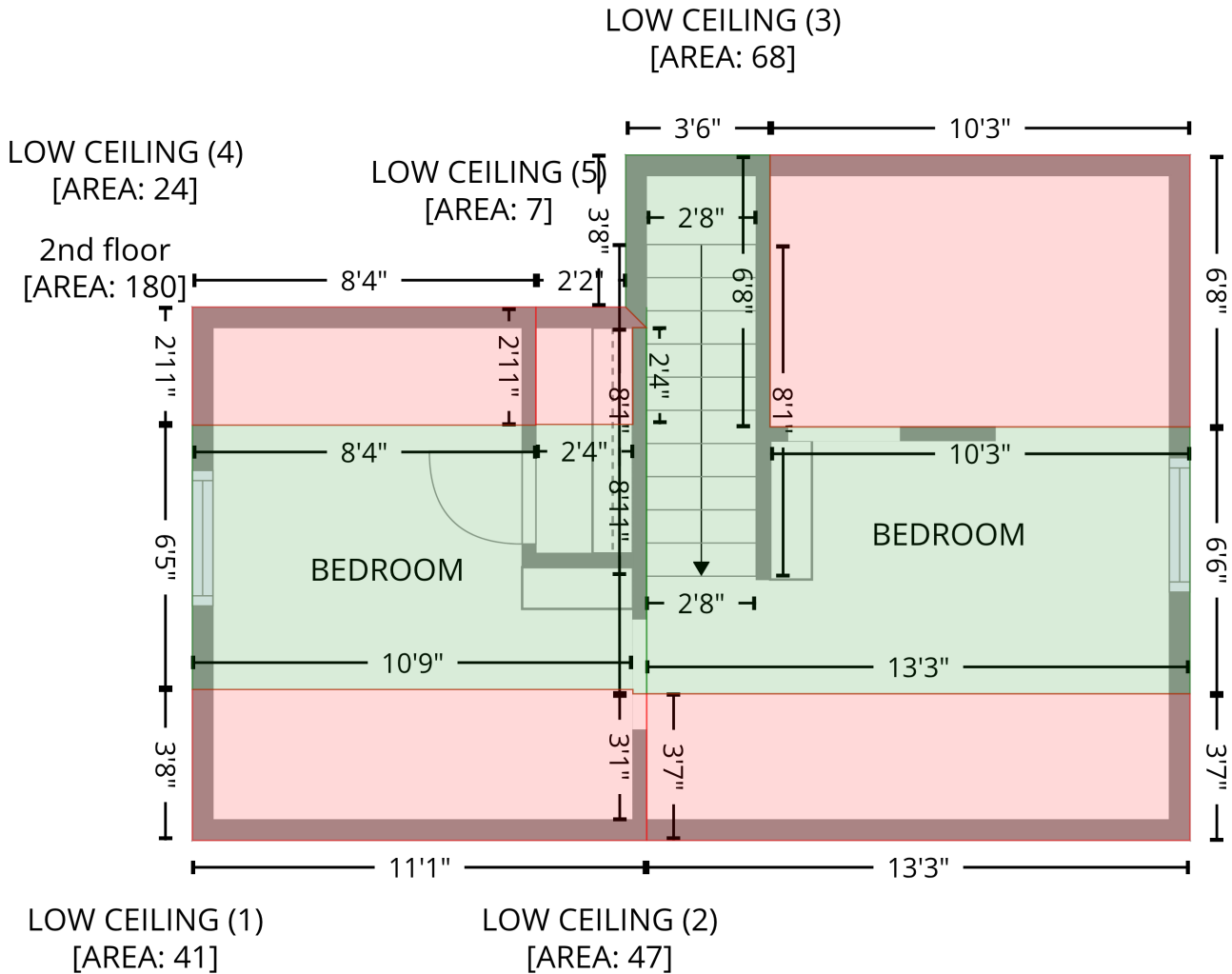
Level 2

Space	Area (sq. ft)	Calculation <small>Coordinate Polygon Area Algorithm using inches</small>
ADU 1 (Living area)	715	$-((366 + 366) * (-74 - 279) + (366 + 74) * (279 - 279) + (74 + 74) * (279 - -74) + (74 + 366) * (-74 - -74)) * 0.5 * 0.00694$
DECK (Non-living area)	422	$-((789.2 + 789.2) * (254.4 - 445.4) + (789.2 + 471.1) * (445.4 - 445.4) + (471.1 + 471.1) * (445.4 - 254.4) + (471.1 + 789.2) * (254.4 - 254.4)) * 0.5 * 0.00694$
PATIO (Non-living area)	319	$-((485.2 + 533.2) * (135.5 - 159.5) + (533.2 + 571.8) * (159.5 - 196.1) + (571.8 + 601.1) * (196.1 - 210.1) + (601.1 + 645.7) * (210.1 - 210.1) + (645.7 + 645.7) * (210.1 - 254.4) + (645.7 + 471.2) * (254.4 - 254.4) + (471.2 + 471.2) * (254.4 - 445.7) + (471.2 + 365.6) * (445.7 - 445.7) + (365.6 + 365.6) * (445.7 - 278.5) + (365.6 + 365.6) * (278.5 - 135.5) + (365.6 + 485.2) * (135.5 - 135.5)) * 0.5 * 0.00694$
Bay Window (Non-living area)	9	$-((500.3 + 521.7) * (559.4 - 579.2) + (521.7 + 432.3) * (579.2 - 579.2) + (432.3 + 453.7) * (579.2 - 559.4) + (453.7 + 500.3) * (559.4 - 559.4)) * 0.5 * 0.00694$

737 Hertford Rd, Winston-Salem, NC, US

Gross Living Area: 2403 sq. ft

Level 3



Space	Area (sq. ft)	Calculation <small>Coordinate Polygon Area Algorithm using inches</small>
2nd floor (Living area)	180	$-\left((206.5 + 206.6) * (47 - 154.2) + (206.6 + 202.6) * (154.2 - 154.2) + (202.6 + 202.6) * (154.2 - 152.9) + (202.6 + 73.7) * (152.9 - 152.9) + (73.7 + 73.7) * (152.9 - 75.6) + (73.7 + 174.2) * (75.6 - 75.6) + (174.2 + 174.2) * (75.6 - 75.4) + (174.2 + 202.6) * (75.4 - 75.4) + (202.6 + 202.5) * (75.4 - 47.1) + (202.5 + 206.5) * (47.1 - 47)\right) * 0.5 * 0.00694 - \left((242.7 + 242.7) * (-3.4 - 76.1) + (242.7 + 365.6) * (76.1 - 76.1) + (365.6 + 365.6) * (76.1 - 154.2) + (365.6 + 206.6) * (154.2 - 154.2) + (206.6 + 206.6) * (154.2 - 41) + (206.6 + 206.5) * (41 - 47) + (206.5 + 200.5) * (47 - 41) + (200.5 + 200.5) * (41 - -3.4) + (200.5 + 242.7) * (-3.4 - -3.4)\right) * 0.5 * 0.00694$
LOW CEILING (Non-living area)	41	$-\left((202.6 + 202.6) * (152.9 - 154.2) + (202.6 + 206.6) * (154.2 - 154.2) + (206.6 + 206.6) * (154.2 - 191) + (206.6 + 206.6) * (191 - 197) + (206.6 + 73.7) * (197 - 197) + (73.7 + 73.7) * (197 - 152.9) + (73.7 + 202.6) * (152.9 - 152.9)\right) * 0.5 * 0.00694$
LOW CEILING (Non-living area)	47	$-\left((365.6 + 365.6) * (154.2 - 197) + (365.6 + 206.6) * (197 - 197) + (206.6 + 206.6) * (197 - 154.2) + (206.6 + 365.6) * (154.2 - 154.2)\right) * 0.5 * 0.00694$

737 Hertford Rd, Winston-Salem, NC, US

Gross Living Area: 2403 sq. ft

Level 3

Space	Area (sq. ft)	Calculation <small>Coordinate Polygon Area Algorithm using inches</small>
LOW CEILING (Non-living area)	68	$-((365.6 + 365.6) * (-3.4 - 76.1) + (365.6 + 242.7) * (76.1 - 76.1) + (242.7 + 242.7) * (76.1 - -3.4) + (242.7 + 365.6) * (-3.4 - -3.4)) * 0.5 * 0.00694$
LOW CEILING (Non-living area)	24	$-((73.7 + 174.2) * (41 - 41) + (174.2 + 174.2) * (41 - 75.6) + (174.2 + 73.7) * (75.6 - 75.6) + (73.7 + 73.7) * (75.6 - 41)) * 0.5 * 0.00694$
LOW CEILING (Non-living area)	7	$-((174.2 + 200.5) * (41 - 41) + (200.5 + 206.5) * (41 - 47) + (206.5 + 202.5) * (47 - 47.1) + (202.5 + 202.6) * (47.1 - 75.4) + (202.6 + 174.2) * (75.4 - 75.4) + (174.2 + 174.2) * (75.4 - 41)) * 0.5 * 0.00694$