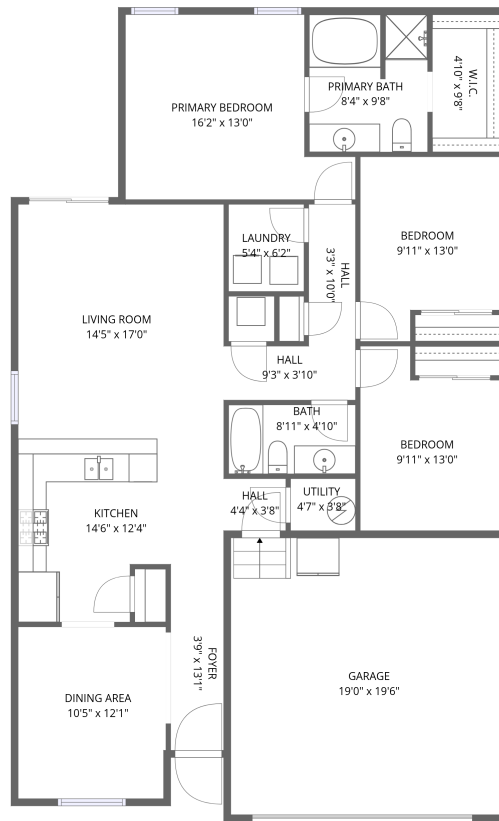


Home data report

373 Whimsical Ave, Lochbuie, CO, US



1st floor

Total Area: 1390 sq. ft

1st Floor: 1390 sq. ft

Excluded: Garage 370 sq. ft, Walls: 112 sq. ft

Property summary

 **1** Floors

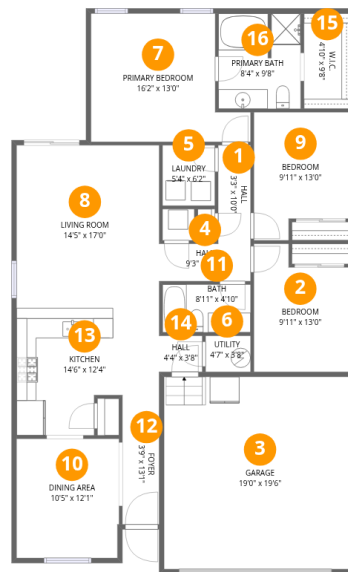
 **3** Bedrooms

 **2** Bathrooms

 **1** Garages

Home data report

373 Whimsical Ave, Lochbuie, CO, US



Room dimensions

Floor 1

Total: 1390sqft

Excluded: 370sqft

#		Dimensions	sqft	Counted as living area
1	Hall	3'3" x 10'0"	33 sq. ft	Yes
2	Bedroom	9'11" x 13'0"	113 sq. ft	Yes
3	Garage	19'0" x 19'6"	370 sq. ft	No
4	Hall	9'3" x 3'10"	35 sq. ft	Yes
5	Laundry	5'4" x 6'2"	33 sq. ft	Yes
6	Utility	4'7" x 3'8"	17 sq. ft	Yes
7	Primary Bedroom	16'2" x 13'0"	175 sq. ft	Yes
8	Living Room	14'5" x 17'0"	247 sq. ft	Yes
9	Bedroom	9'11" x 13'0"	114 sq. ft	Yes
10	Dining Area	10'5" x 12'1"	125 sq. ft	Yes
11	Bath	8'11" x 4'10"	43 sq. ft	Yes

Home data report

373 Whimsical Ave,Lochbuie,CO,US

#		Dimensions	sqft	Counted as living area
12	Foyer	3'9" x 13'1"	49 sq. ft	Yes
13	Kitchen	14'6" x 12'4"	151 sq. ft	Yes
14	Hall	4'4" x 3'8"	16 sq. ft	Yes
15	W.I.C.	4'10" x 9'8"	47 sq. ft	Yes
16	Primary Bath	8'4" x 9'8"	79 sq. ft	Yes

1 Floor 1 - Hall



Dimensions: 3'3" x 10'0"
Area: 33 sq. ft
Counted as living area: Yes

Heated: Yes
Finished: Yes
Enclosed: Yes
Contiguous: Yes
Permitted: Yes
Wet space: No
Addition: No
Conversion: No

2 Floor 1 - Bedroom



Dimensions: 9'11" x 13'0"
Area: 113 sq. ft
Counted as living area: Yes

Heated: Yes
Finished: Yes
Enclosed: Yes
Contiguous: Yes
Permitted: Yes
Wet space: No
Addition: No
Conversion: No

3 Floor 1 - Garage



Dimensions: 19'0" x 19'6"
Area: 370 sq. ft
Counted as living area: No

Heated: No
Finished: No
Enclosed: Yes
Contiguous: Yes
Permitted: Yes
Wet space: No
Addition: No
Conversion: No

4 Floor 1 - Hall



Dimensions: 9'3" x 3'10"
Area: 35 sq. ft
Counted as living area: Yes

Heated: Yes
Finished: Yes
Enclosed: Yes
Contiguous: Yes
Permitted: Yes
Wet space: No
Addition: No
Conversion: No

5 Floor 1 - Laundry



Dimensions: 5'4" x 6'2"
Area: 33 sq. ft
Counted as living area: Yes

Heated: Yes
Finished: Yes
Enclosed: Yes
Contiguous: Yes
Permitted: Yes
Wet space: No
Addition: No
Conversion: No

6 Floor 1 - Utility



Dimensions: 4'7" x 3'8"
Area: 17 sq. ft
Counted as living area: Yes

Heated: Yes
Finished: Yes
Enclosed: Yes
Contiguous: Yes
Permitted: Yes
Wet space: No
Addition: No
Conversion: No

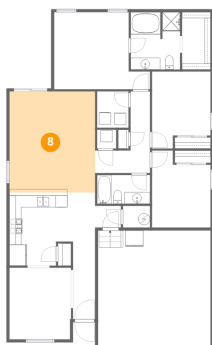
7 Floor 1 - Primary Bedroom



Dimensions: 16'2" x 13'0"
Area: 175 sq. ft
Counted as living area: Yes

Heated: Yes
Finished: Yes
Enclosed: Yes
Contiguous: Yes
Permitted: Yes
Wet space: No
Addition: No
Conversion: No

8 Floor 1 - Living Room



Dimensions: 14'5" x 17'0"
Area: 247 sq. ft
Counted as living area: Yes

Heated: Yes
Finished: Yes
Enclosed: Yes
Contiguous: Yes
Permitted: Yes
Wet space: No
Addition: No
Conversion: No

9 Floor 1 - Bedroom



Dimensions: 9'11" x 13'0"
Area: 114 sq. ft
Counted as living area: Yes

Heated: Yes
Finished: Yes
Enclosed: Yes
Contiguous: Yes
Permitted: Yes
Wet space: No
Addition: No
Conversion: No

10 Floor 1 - Dining Area



Dimensions: 10'5" x 12'1"
Area: 125 sq. ft
Counted as living area: Yes

Heated: Yes
Finished: Yes
Enclosed: Yes
Contiguous: Yes
Permitted: Yes
Wet space: No
Addition: No
Conversion: No

11 Floor 1 - Bath



Dimensions: 8'11" x 4'10"
Area: 43 sq. ft
Counted as living area: Yes

Heated: Yes
Finished: Yes
Enclosed: Yes
Contiguous: Yes
Permitted: Yes
Wet space: Yes
Addition: No
Conversion: No

12 Floor 1 - Foyer



Dimensions: 3'9" x 13'1"
Area: 49 sq. ft
Counted as living area: Yes

Heated: Yes
Finished: Yes
Enclosed: Yes
Contiguous: Yes
Permitted: Yes
Wet space: No
Addition: No
Conversion: No

13 Floor 1 - Kitchen



Dimensions: 14'6" x 12'4"
Area: 151 sq. ft
Counted as living area: Yes

Heated: Yes
Finished: Yes
Enclosed: Yes
Contiguous: Yes
Permitted: Yes
Wet space: No
Addition: No
Conversion: No

14 Floor 1 - Hall



Dimensions: 4'4" x 3'8"
Area: 16 sq. ft
Counted as living area: Yes

Heated: Yes
Finished: Yes
Enclosed: Yes
Contiguous: Yes
Permitted: Yes
Wet space: No
Addition: No
Conversion: No

15 Floor 1 - W.I.C.



Dimensions: 4'10" x 9'8"
Area: 47 sq. ft
Counted as living area: Yes

Heated: Yes
Finished: Yes
Enclosed: Yes
Contiguous: Yes
Permitted: Yes
Wet space: No
Addition: No
Conversion: No

16 Floor 1 - Primary Bath



Dimensions: 8'4" x 9'8"
Area: 79 sq. ft
Counted as living area: Yes

Heated: Yes
Finished: Yes
Enclosed: Yes
Contiguous: Yes
Permitted: Yes
Wet space: Yes
Addition: No
Conversion: No