

Home data report

3110 Falcon Dr, Maryville, TN, US



**Total Area: 1573 sq. ft**

1st Floor: 1573 sq. ft

Excluded: Garage 495 sq. ft, Screened porch 208 sq. ft, Deck 222 sq. ft, Fireplace 16 sq. ft, Walls: 145 sq. ft

## Property summary



**1** Floors



**3** Bedrooms



**2** Bathrooms



**1** Garages

Scan captured on Fri, 29 May 2026 19:55:37 GMT

FLOOR PLAN CREATED BY CUBICASA APP. MEASUREMENTS ARE CONSIDERED RELIABLE BUT NOT ACCURATE.

# Home data report

## 3110 Falcon Dr, Maryville, TN, US



### Room dimensions

Floor 1

Total: 1573 sqft Excluded: 941 sqft

| #  |                 | Dimensions     | sqft       | Counted as living area |
|----|-----------------|----------------|------------|------------------------|
| 1  | Deck            | 15'4" x 15'9"  | 222 sq. ft | No                     |
| 2  | Hall            | 3'6" x 5'3"    | 18 sq. ft  | Yes                    |
| 3  | Primary Bath    | 14'0" x 13'1"  | 125 sq. ft | Yes                    |
| 4  | Primary Bedroom | 14'0" x 15'11" | 223 sq. ft | Yes                    |
| 5  | Kitchen         | 13'0" x 12'8"  | 160 sq. ft | Yes                    |
| 6  | Bedroom         | 13'3" x 11'9"  | 138 sq. ft | Yes                    |
| 7  | Living Room     | 21'10" x 12'9" | 292 sq. ft | Yes                    |
| 8  | Bedroom         | 13'3" x 11'6"  | 153 sq. ft | Yes                    |
| 9  | W.I.C.          | 7'6" x 6'1"    | 45 sq. ft  | Yes                    |
| 10 | Garage          | 21'8" x 23'9"  | 495 sq. ft | No                     |
| 11 | Dining Area     | 16'6" x 12'8"  | 189 sq. ft | Yes                    |

Scan captured on Fri, 29 May 2026 19:55:37 GMT

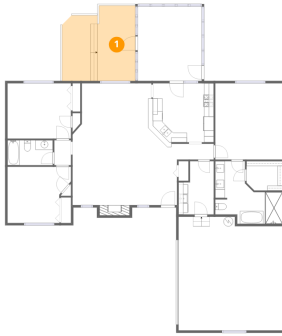
FLOOR PLAN CREATED BY CUBICASA APP. MEASUREMENTS ARE CONSIDERED RELIABLE BUT NOT ACCURATE.

Home data report

**3110 Falcon Dr, Maryville, TN, US**

| #  |                | Dimensions    | sqft       | Counted as living area |
|----|----------------|---------------|------------|------------------------|
| 12 | Hall           | 7'8" x 3'3"   | 25 sq. ft  | Yes                    |
| 13 | Bath           | 9'5" x 5'3"   | 49 sq. ft  | Yes                    |
| 14 | Laundry        | 7'4" x 11'1"  | 71 sq. ft  | Yes                    |
| 15 | Screened Porch | 13'4" x 15'7" | 208 sq. ft | No                     |

## 1 Floor 1 - Deck



Dimensions: 15'4" x 15'9"  
Area: 222 sq. ft  
Counted as living area: No

Heated: No  
Finished: No  
Enclosed: No  
Contiguous: Yes  
Permitted: Yes  
Wet space: No  
Addition: No  
Conversion: No

## 2 Floor 1 - Hall



Dimensions: 3'6" x 5'3"  
Area: 18 sq. ft  
Counted as living area: Yes

Heated: Yes  
Finished: Yes  
Enclosed: Yes  
Contiguous: Yes  
Permitted: Yes  
Wet space: No  
Addition: No  
Conversion: No

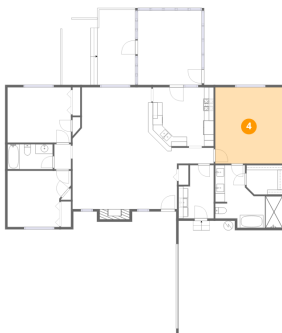
### 3 Floor 1 - Primary Bath



Dimensions: 14'0" x 13'1"  
Area: 125 sq. ft  
Counted as living area: Yes

Heated: Yes  
Finished: Yes  
Enclosed: Yes  
Contiguous: Yes  
Permitted: Yes  
Wet space: Yes  
Addition: No  
Conversion: No

### 4 Floor 1 - Primary Bedroom



Dimensions: 14'0" x 15'11"  
Area: 223 sq. ft  
Counted as living area: Yes

Heated: Yes  
Finished: Yes  
Enclosed: Yes  
Contiguous: Yes  
Permitted: Yes  
Wet space: No  
Addition: No  
Conversion: No

### 5 Floor 1 - Kitchen



Dimensions: 13'0" x 12'8"  
Area: 160 sq. ft  
Counted as living area: Yes

Heated: Yes  
Finished: Yes  
Enclosed: Yes  
Contiguous: Yes  
Permitted: Yes  
Wet space: No  
Addition: No  
Conversion: No

### 6 Floor 1 - Bedroom



Dimensions: 13'3" x 11'9"  
Area: 138 sq. ft  
Counted as living area: Yes

Heated: Yes  
Finished: Yes  
Enclosed: Yes  
Contiguous: Yes  
Permitted: Yes  
Wet space: No  
Addition: No  
Conversion: No

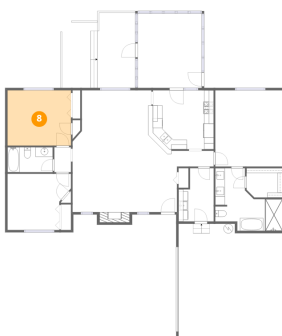
### 7 Floor 1 - Living Room



Dimensions: 21'10" x 12'9"  
Area: 292 sq. ft  
Counted as living area: Yes

Heated: Yes  
Finished: Yes  
Enclosed: Yes  
Contiguous: Yes  
Permitted: Yes  
Wet space: No  
Addition: No  
Conversion: No

### 8 Floor 1 - Bedroom



Dimensions: 13'3" x 11'6"  
Area: 153 sq. ft  
Counted as living area: Yes

Heated: Yes  
Finished: Yes  
Enclosed: Yes  
Contiguous: Yes  
Permitted: Yes  
Wet space: No  
Addition: No  
Conversion: No

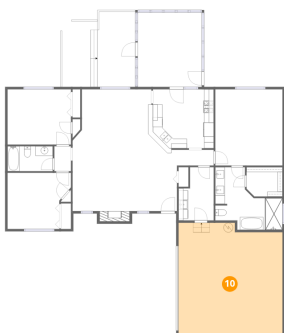
**9** Floor 1 - W.I.C.



Dimensions: 7'6" x 6'1"  
Area: 45 sq. ft  
Counted as living area: Yes

Heated: Yes  
Finished: Yes  
Enclosed: Yes  
Contiguous: Yes  
Permitted: Yes  
Wet space: No  
Addition: No  
Conversion: No

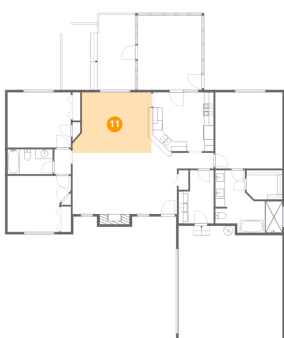
**10** Floor 1 - Garage



Dimensions: 21'8" x 23'9"  
Area: 495 sq. ft  
Counted as living area: No

Heated: No  
Finished: No  
Enclosed: Yes  
Contiguous: Yes  
Permitted: Yes  
Wet space: No  
Addition: No  
Conversion: No

**11** Floor 1 - Dining Area



Dimensions: 16'6" x 12'8"  
Area: 189 sq. ft  
Counted as living area: Yes

Heated: Yes  
Finished: Yes  
Enclosed: Yes  
Contiguous: Yes  
Permitted: Yes  
Wet space: No  
Addition: No  
Conversion: No

**12** Floor 1 - Hall



Dimensions: 7'8" x 3'3"  
Area: 25 sq. ft  
Counted as living area: Yes

Heated: Yes  
Finished: Yes  
Enclosed: Yes  
Contiguous: Yes  
Permitted: Yes  
Wet space: No  
Addition: No  
Conversion: No

**13** Floor 1 - Bath



Dimensions: 9'5" x 5'3"  
Area: 49 sq. ft  
Counted as living area: Yes

Heated: Yes  
Finished: Yes  
Enclosed: Yes  
Contiguous: Yes  
Permitted: Yes  
Wet space: Yes  
Addition: No  
Conversion: No

**14** Floor 1 - Laundry



Dimensions: 7'4" x 11'1"  
Area: 71 sq. ft  
Counted as living area: Yes

Heated: Yes  
Finished: Yes  
Enclosed: Yes  
Contiguous: Yes  
Permitted: Yes  
Wet space: No  
Addition: No  
Conversion: No

**15** Floor 1 - Screened Porch

---



**Dimensions:** 13'4" x 15'7"  
**Area:** 208 sq. ft  
**Counted as living area:** No

**Heated:** No  
**Finished:** No  
**Enclosed:** No  
**Contiguous:** Yes  
**Permitted:** Yes  
**Wet space:** No  
**Addition:** No  
**Conversion:** No