

Home data report

65 Plymouth Road, Glen Rock, Bergen County, New Jersey,
United States, 07452



Total Area: 4470 sq. ft

1st Floor: 841 sq. ft, 2nd Floor: 1979 sq. ft, 3rd Floor: 1650 sq. ft

Excluded: Garage 624 sq. ft, Utility 159 sq. ft, Pool equipment room 279 sq. ft, Undefined 3 sq. ft, Porch 158 sq. ft, Deck 166 sq. ft, Low ceiling 9 sq. ft, Walls: 321 sq. ft

Property summary

**3**
Floors

**5**
Bedrooms

**3**
Bathrooms

Home data report

**65 Plymouth Road, Glen Rock, Bergen County, New Jersey,
United States, 07452**



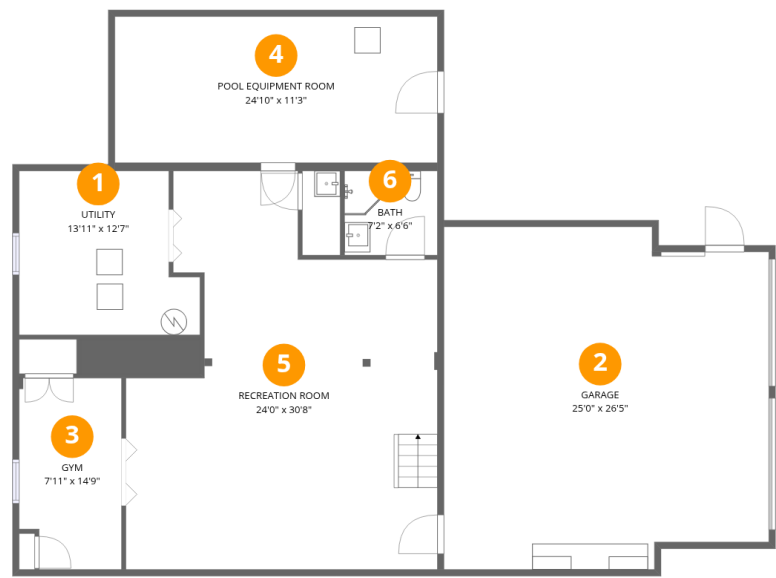
1
Half baths



1
Garages

Home data report

65 Plymouth Road, Glen Rock, Bergen County, New Jersey,
United States, 07452



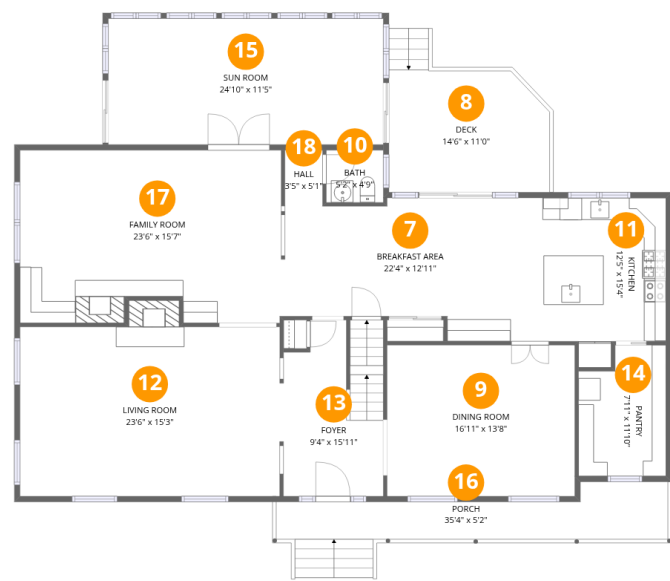
Room dimensions

Floor 1 Total:841sqft Excluded: 1065sqft

#		Dimensions	sqft	Counted as living area
1	Utility	13'11" x 12'7"	156 sq. ft	No
2	Garage	25'0" x 26'5"	624 sq. ft	No
3	Gym	7'11" x 14'9"	111 sq. ft	Yes
4	Pool Equipment Room	24'10" x 11'3"	279 sq. ft	No
5	Recreation Room	24'0" x 30'8"	585 sq. ft	Yes
6	Bath	7'2" x 6'6"	46 sq. ft	Yes

Home data report

65 Plymouth Road, Glen Rock, Bergen County, New Jersey,
United States, 07452



Room dimensions

Floor 2 Total:1979sqft Excluded: 324sqft

#		Dimensions	sqft	Counted as living area
7	Breakfast Area	22'4" x 12'11"	248 sq. ft	Yes
8	Deck	14'6" x 11'0"	166 sq. ft	No
9	Dining Room	16'11" x 13'8"	231 sq. ft	Yes
10	Bath	5'2" x 4'9"	24 sq. ft	Yes
11	Kitchen	12'5" x 15'4"	168 sq. ft	Yes
12	Living Room	23'6" x 15'3"	369 sq. ft	Yes
13	Foyer	9'4" x 15'11"	138 sq. ft	Yes
14	Pantry	7'11" x 11'10"	86 sq. ft	Yes
15	Sun Room	24'10" x 11'5"	283 sq. ft	Yes
16	Porch	35'4" x 5'2"	158 sq. ft	No
17	Family Room	23'6" x 15'7"	355 sq. ft	Yes

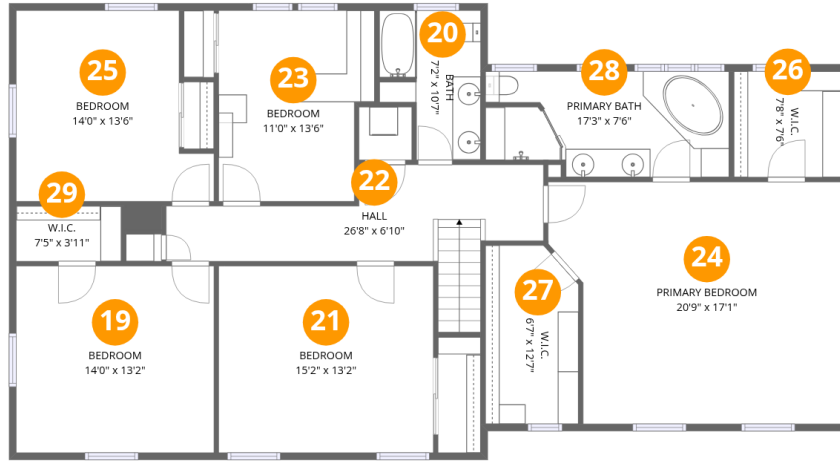
Home data report

65 Plymouth Road, Glen Rock, Bergen County, New Jersey,
United States, 07452

#		Dimensions	sqft	Counted as living area
18	Hall	3'5" x 5'1"	17 sq. ft	Yes

Home data report

65 Plymouth Road, Glen Rock, Bergen County, New Jersey,
United States, 07452



Room dimensions

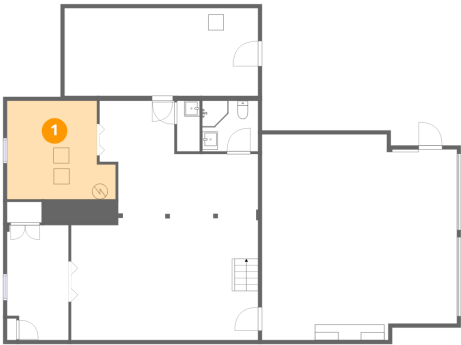
Floor 3

Total:1650sqft Excluded: 9sqft

#		Dimensions	sqft	Counted as living area
19	Bedroom	14'0" x 13'2"	184 sq. ft	Yes
20	Bath	7'2" x 10'7"	64 sq. ft	Yes
21	Bedroom	15'2" x 13'2"	200 sq. ft	Yes
22	Hall	26'8" x 6'10"	151 sq. ft	Yes
23	Bedroom	11'0" x 13'6"	138 sq. ft	Yes
24	Primary Bedroom	20'9" x 17'1"	317 sq. ft	Yes
25	Bedroom	14'0" x 13'6"	163 sq. ft	Yes
26	W.I.C.	7'8" x 7'6"	57 sq. ft	Yes
27	W.I.C.	6'7" x 12'7"	79 sq. ft	Yes
28	Primary Bath	17'3" x 7'6"	120 sq. ft	Yes
29	W.I.C.	7'5" x 3'11"	29 sq. ft	Yes

65 Plymouth Road, Glen Rock, Bergen County, New Jersey,
United States, 07452

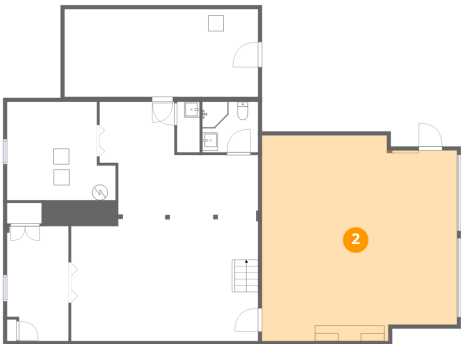
1 Floor 1 - Utility



Dimensions: 13'11" x 12'7"
Area: 156 sq. ft
Counted as living area: No

Heated: Yes
Finished: No
Enclosed: Yes
Contiguous: Yes
Permitted: Yes
Wet space: No
Addition: No
Conversion: No

2 Floor 1 - Garage

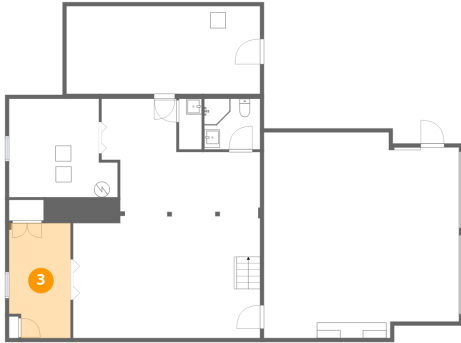


Dimensions: 25'0" x 26'5"
Area: 624 sq. ft
Counted as living area: No

Heated: No
Finished: No
Enclosed: Yes
Contiguous: Yes
Permitted: Yes
Wet space: No
Addition: No
Conversion: No

65 Plymouth Road, Glen Rock, Bergen County, New Jersey,
United States, 07452

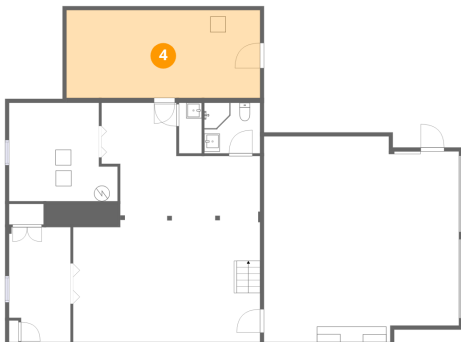
3 Floor 1 - Gym



Dimensions: 7'11" x 14'9"
Area: 111 sq. ft
Counted as living area: Yes

Heated: Yes
Finished: Yes
Enclosed: Yes
Contiguous: Yes
Permitted: Yes
Wet space: No
Addition: No
Conversion: No

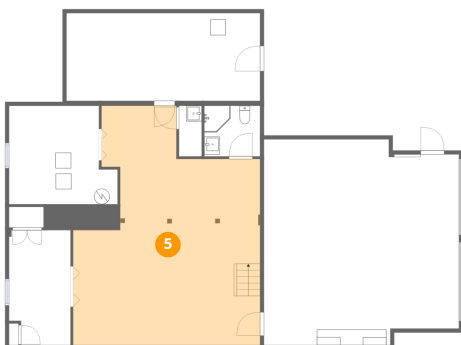
4 Floor 1 - Pool Equipment Room



Dimensions: 24'10" x 11'3"
Area: 279 sq. ft
Counted as living area: No

Heated: Yes
Finished: No
Enclosed: Yes
Contiguous: Yes
Permitted: Yes
Wet space: No
Addition: No
Conversion: No

5 Floor 1 - Recreation Room

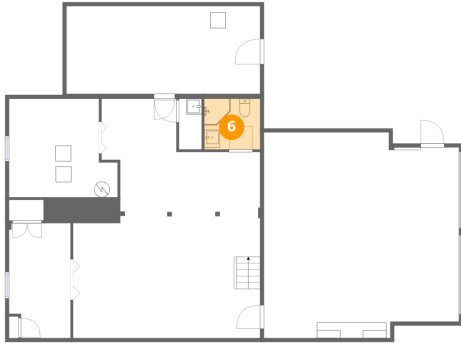


Dimensions: 24'0" x 30'8"
Area: 585 sq. ft
Counted as living area: Yes

Heated: Yes
Finished: Yes
Enclosed: Yes
Contiguous: Yes
Permitted: Yes
Wet space: No
Addition: No
Conversion: No

65 Plymouth Road, Glen Rock, Bergen County, New Jersey,
United States, 07452

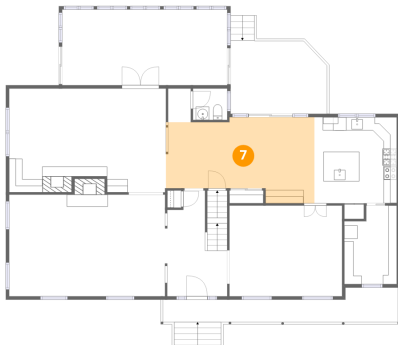
6 Floor 1 - Bath



Dimensions: 7'2" x 6'6"
Area: 46 sq. ft
Counted as living area: Yes

Heated: Yes
Finished: Yes
Enclosed: Yes
Contiguous: Yes
Permitted: Yes
Wet space: Yes
Addition: No
Conversion: No

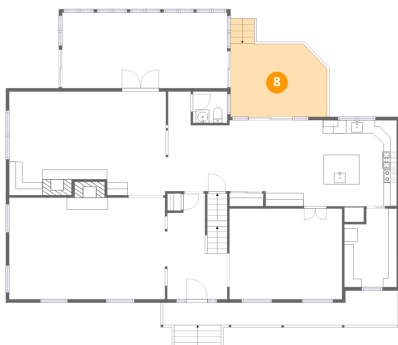
7 Floor 2 - Breakfast Area



Dimensions: 22'4" x 12'11"
Area: 248 sq. ft
Counted as living area: Yes

Heated: Yes
Finished: Yes
Enclosed: Yes
Contiguous: Yes
Permitted: Yes
Wet space: No
Addition: No
Conversion: No

8 Floor 2 - Deck

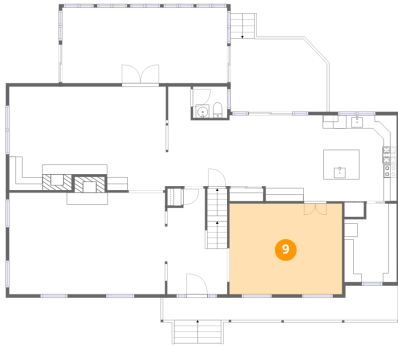


Dimensions: 14'6" x 11'0"
Area: 166 sq. ft
Counted as living area: No

Heated: No
Finished: No
Enclosed: No
Contiguous: Yes
Permitted: Yes
Wet space: No
Addition: No
Conversion: No

65 Plymouth Road, Glen Rock, Bergen County, New Jersey,
United States, 07452

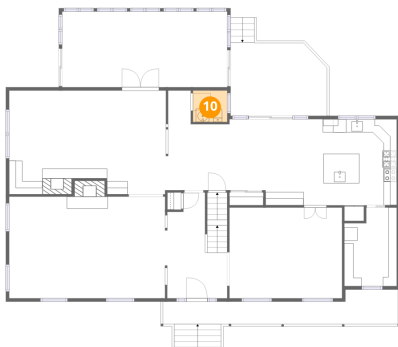
9 Floor 2 - Dining Room



Dimensions: 16'11" x 13'8"
Area: 231 sq. ft
Counted as living area: Yes

Heated: Yes
Finished: Yes
Enclosed: Yes
Contiguous: Yes
Permitted: Yes
Wet space: No
Addition: No
Conversion: No

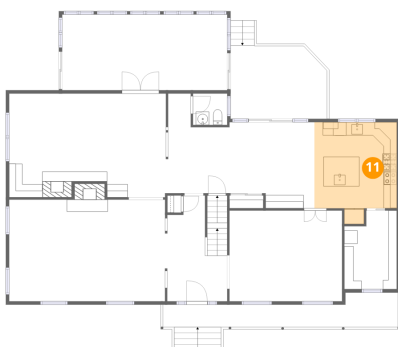
10 Floor 2 - Bath



Dimensions: 5'2" x 4'9"
Area: 24 sq. ft
Counted as living area: Yes

Heated: Yes
Finished: Yes
Enclosed: Yes
Contiguous: Yes
Permitted: Yes
Wet space: Yes
Addition: No
Conversion: No

11 Floor 2 - Kitchen

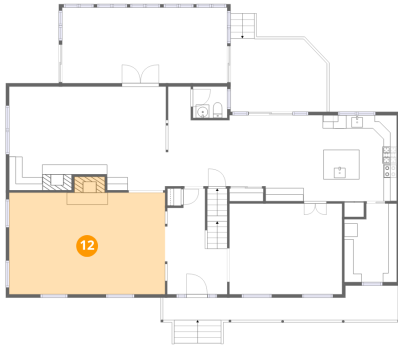


Dimensions: 12'5" x 15'4"
Area: 168 sq. ft
Counted as living area: Yes

Heated: Yes
Finished: Yes
Enclosed: Yes
Contiguous: Yes
Permitted: Yes
Wet space: No
Addition: No
Conversion: No

65 Plymouth Road, Glen Rock, Bergen County, New Jersey,
United States, 07452

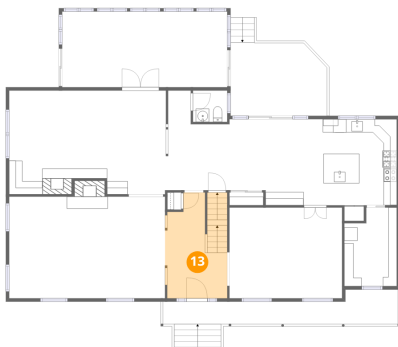
12 Floor 2 - Living Room



Dimensions: 23'6" x 15'3"
Area: 369 sq. ft
Counted as living area: Yes

Heated: Yes
Finished: Yes
Enclosed: Yes
Contiguous: Yes
Permitted: Yes
Wet space: No
Addition: No
Conversion: No

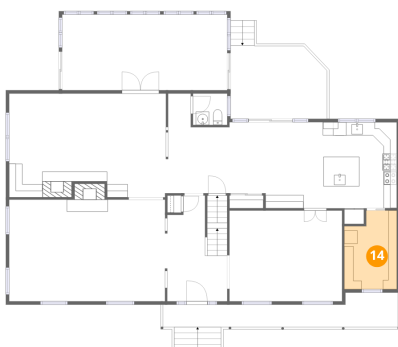
13 Floor 2 - Foyer



Dimensions: 9'4" x 15'11"
Area: 138 sq. ft
Counted as living area: Yes

Heated: Yes
Finished: Yes
Enclosed: Yes
Contiguous: Yes
Permitted: Yes
Wet space: No
Addition: No
Conversion: No

14 Floor 2 - Pantry

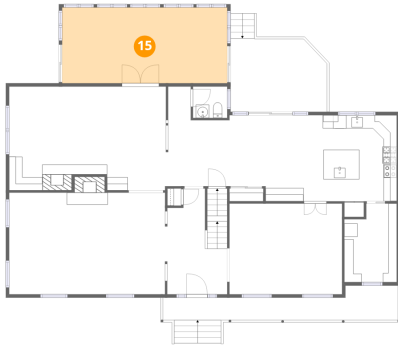


Dimensions: 7'11" x 11'10"
Area: 86 sq. ft
Counted as living area: Yes

Heated: Yes
Finished: Yes
Enclosed: Yes
Contiguous: Yes
Permitted: Yes
Wet space: No
Addition: No
Conversion: No

65 Plymouth Road, Glen Rock, Bergen County, New Jersey,
United States, 07452

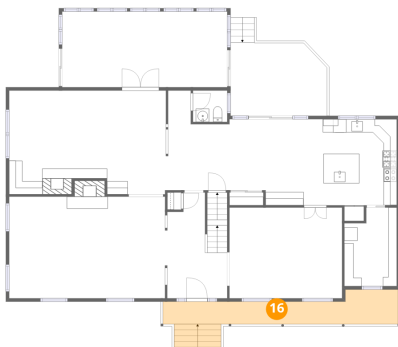
15 Floor 2 - Sun Room



Dimensions: 24'10" x 11'5"
Area: 283 sq. ft
Counted as living area: Yes

Heated: Yes
Finished: Yes
Enclosed: Yes
Contiguous: Yes
Permitted: Yes
Wet space: No
Addition: No
Conversion: No

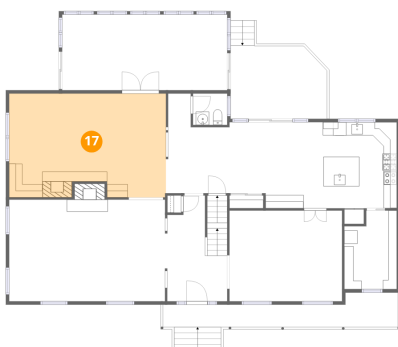
16 Floor 2 - Porch



Dimensions: 35'4" x 5'2"
Area: 158 sq. ft
Counted as living area: No

Heated: No
Finished: No
Enclosed: No
Contiguous: Yes
Permitted: Yes
Wet space: No
Addition: No
Conversion: No

17 Floor 2 - Family Room



Dimensions: 23'6" x 15'7"
Area: 355 sq. ft
Counted as living area: Yes

Heated: Yes
Finished: Yes
Enclosed: Yes
Contiguous: Yes
Permitted: Yes
Wet space: No
Addition: No
Conversion: No

65 Plymouth Road, Glen Rock, Bergen County, New Jersey,
United States, 07452

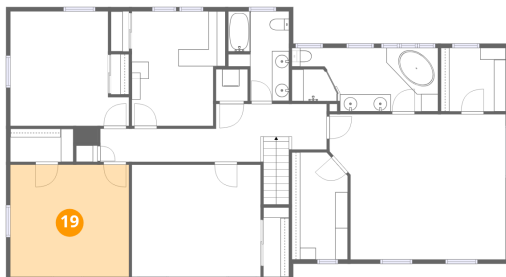
18 Floor 2 - Hall



Dimensions: 3'5" x 5'1"
Area: 17 sq. ft
Counted as living area: Yes

Heated: Yes
Finished: Yes
Enclosed: Yes
Contiguous: Yes
Permitted: Yes
Wet space: No
Addition: No
Conversion: No

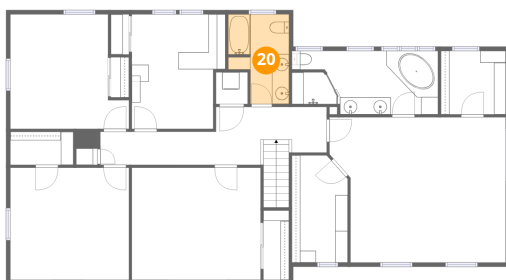
19 Floor 3 - Bedroom



Dimensions: 14'0" x 13'2"
Area: 184 sq. ft
Counted as living area: Yes

Heated: Yes
Finished: Yes
Enclosed: Yes
Contiguous: Yes
Permitted: Yes
Wet space: No
Addition: No
Conversion: No

20 Floor 3 - Bath

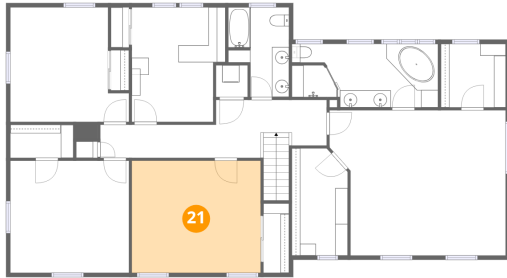


Dimensions: 7'2" x 10'7"
Area: 64 sq. ft
Counted as living area: Yes

Heated: Yes
Finished: Yes
Enclosed: Yes
Contiguous: Yes
Permitted: Yes
Wet space: Yes
Addition: No
Conversion: No

65 Plymouth Road, Glen Rock, Bergen County, New Jersey,
United States, 07452

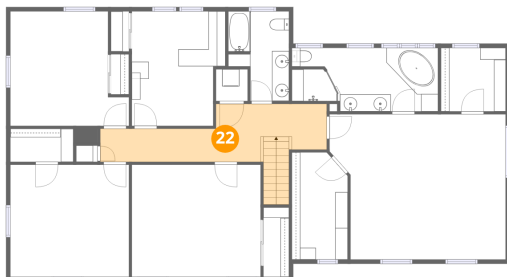
21 Floor 3 - Bedroom



Dimensions: 15'2" x 13'2"
Area: 200 sq. ft
Counted as living area: Yes

Heated: Yes
Finished: Yes
Enclosed: Yes
Contiguous: Yes
Permitted: Yes
Wet space: No
Addition: No
Conversion: No

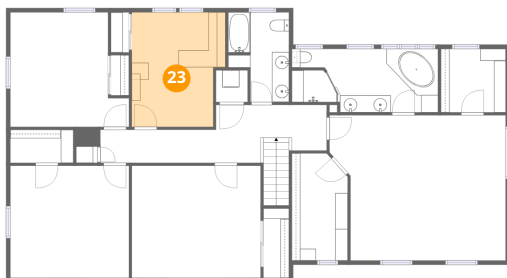
22 Floor 3 - Hall



Dimensions: 26'8" x 6'10"
Area: 151 sq. ft
Counted as living area: Yes

Heated: Yes
Finished: Yes
Enclosed: Yes
Contiguous: Yes
Permitted: Yes
Wet space: No
Addition: No
Conversion: No

23 Floor 3 - Bedroom



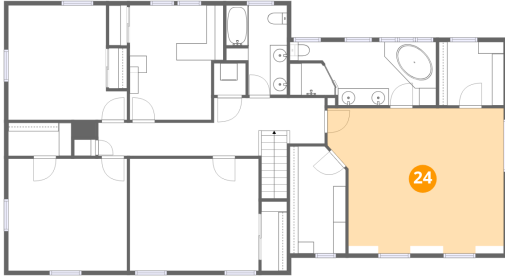
Dimensions: 11'0" x 13'6"
Area: 138 sq. ft
Counted as living area: Yes

Heated: Yes
Finished: Yes
Enclosed: Yes
Contiguous: Yes
Permitted: Yes
Wet space: No
Addition: No
Conversion: No

Home data report

65 Plymouth Road, Glen Rock, Bergen County, New Jersey,
United States, 07452

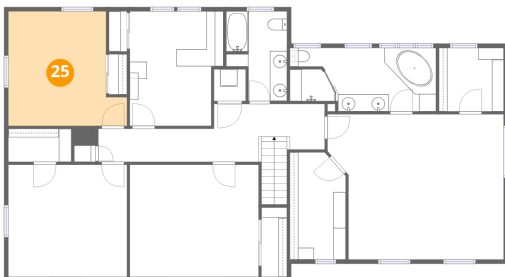
24 Floor 3 - Primary Bedroom



Dimensions: 20'9" x 17'1"
Area: 317 sq. ft
Counted as living area: Yes

Heated: Yes
Finished: Yes
Enclosed: Yes
Contiguous: Yes
Permitted: Yes
Wet space: No
Addition: No
Conversion: No

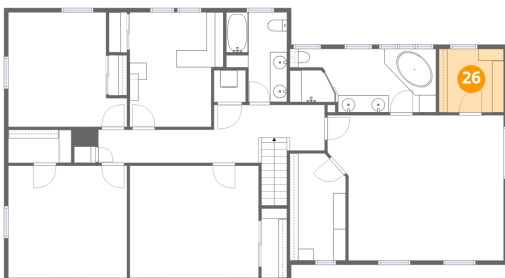
25 Floor 3 - Bedroom



Dimensions: 14'0" x 13'6"
Area: 163 sq. ft
Counted as living area: Yes

Heated: Yes
Finished: Yes
Enclosed: Yes
Contiguous: Yes
Permitted: Yes
Wet space: No
Addition: No
Conversion: No

26 Floor 3 - W.I.C.



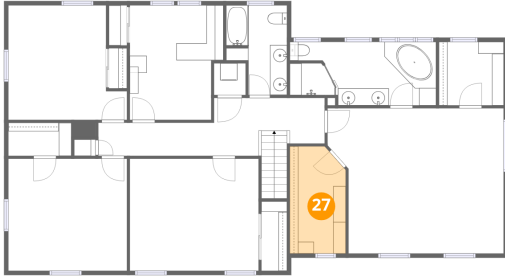
Dimensions: 7'8" x 7'6"
Area: 57 sq. ft
Counted as living area: Yes

Heated: Yes
Finished: Yes
Enclosed: Yes
Contiguous: Yes
Permitted: Yes
Wet space: No
Addition: No
Conversion: No

Home data report

65 Plymouth Road, Glen Rock, Bergen County, New Jersey,
United States, 07452

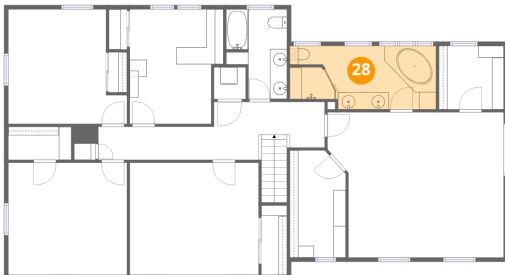
27 Floor 3 - W.I.C.



Dimensions: 6'7" x 12'7"
Area: 79 sq. ft
Counted as living area: Yes

Heated: Yes
Finished: Yes
Enclosed: Yes
Contiguous: Yes
Permitted: Yes
Wet space: No
Addition: No
Conversion: No

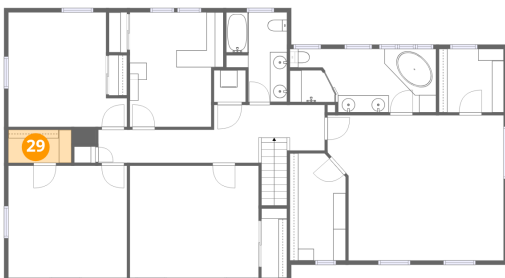
28 Floor 3 - Primary Bath



Dimensions: 17'3" x 7'6"
Area: 120 sq. ft
Counted as living area: Yes

Heated: Yes
Finished: Yes
Enclosed: Yes
Contiguous: Yes
Permitted: Yes
Wet space: Yes
Addition: No
Conversion: No

29 Floor 3 - W.I.C.



Dimensions: 7'5" x 3'11"
Area: 29 sq. ft
Counted as living area: Yes

Heated: Yes
Finished: Yes
Enclosed: Yes
Contiguous: Yes
Permitted: Yes
Wet space: No
Addition: No
Conversion: No