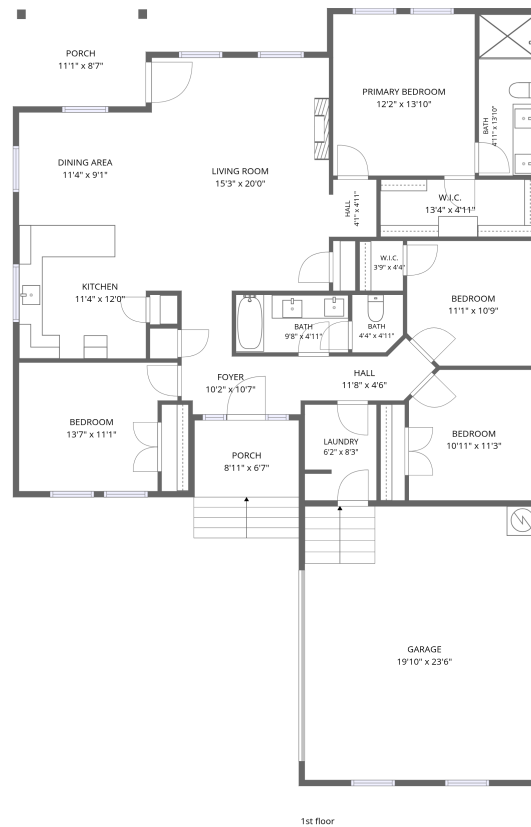


Home data report

2201 Christine Drive, Canyon Creek, Granbury, Hood County, Texas, United States, 76048



Total Area: 1611 sq. ft

1st Floor: 1611 sq. ft

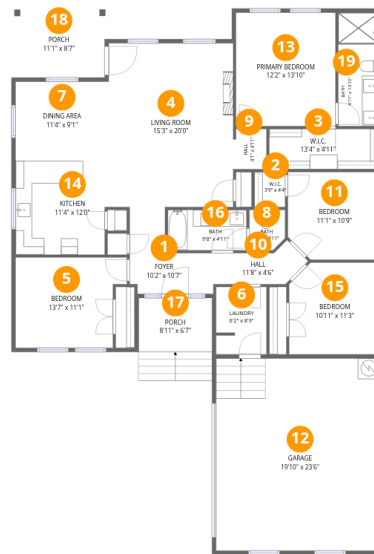
Excluded: Garage 466 sq. ft, Porch 155 sq. ft, Walls: 128 sq. ft

Property summary



Home data report

2201 Christine Drive, Canyon Creek, Granbury, Hood County, Texas, United States, 76048



Room dimensions

Floor 1

Total:1611sqft Excluded: 621sqft

#		Dimensions	sqft	Counted as living area
1	Foyer	10'2" x 10'7"	74 sq. ft	Yes
2	W.I.C.	3'9" x 4'4"	16 sq. ft	Yes
3	W.I.C.	13'4" x 4'11"	66 sq. ft	Yes
4	Living Room	15'3" x 20'0"	305 sq. ft	Yes
5	Bedroom	13'7" x 11'1"	137 sq. ft	Yes
6	Laundry	6'2" x 8'3"	50 sq. ft	Yes
7	Dining Area	11'4" x 9'1"	104 sq. ft	Yes
8	Bath	4'4" x 4'11"	21 sq. ft	Yes
9	Hall	4'1" x 4'11"	20 sq. ft	Yes
10	Hall	11'8" x 4'6"	42 sq. ft	Yes
11	Bedroom	11'1" x 10'9"	115 sq. ft	Yes

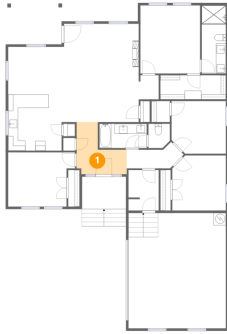
Home data report

**2201 Christine Drive, Canyon Creek, Granbury, Hood County,
Texas, United States, 76048**

#		Dimensions	sqft	Counted as living area
12	Garage	19'10" x 23'6"	466 sq. ft	No
13	Primary Bedroom	12'2" x 13'10"	169 sq. ft	Yes
14	Kitchen	11'4" x 12'0"	134 sq. ft	Yes
15	Bedroom	10'11" x 11'3"	119 sq. ft	Yes
16	Bath	9'8" x 4'11"	48 sq. ft	Yes
17	Porch	8'11" x 6'7"	59 sq. ft	No
18	Porch	11'1" x 8'7"	96 sq. ft	No
19	Bath	4'11" x 13'10"	68 sq. ft	Yes

2201 Christine Drive, Canyon Creek, Granbury, Hood County, Texas, United States, 76048

1 Floor 1 - Foyer



Dimensions: 10'2" x 10'7"
Area: 74 sq. ft
Counted as living area: Yes

Heated: Yes
Finished: Yes
Enclosed: Yes
Contiguous: Yes
Permitted: Yes
Wet space: No
Addition: No
Conversion: No

2 Floor 1 - W.I.C.

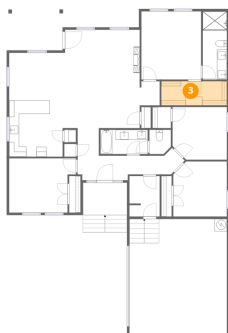


Dimensions: 3'9" x 4'4"
Area: 16 sq. ft
Counted as living area: Yes

Heated: Yes
Finished: Yes
Enclosed: Yes
Contiguous: Yes
Permitted: Yes
Wet space: No
Addition: No
Conversion: No

2201 Christine Drive, Canyon Creek, Granbury, Hood County, Texas, United States, 76048

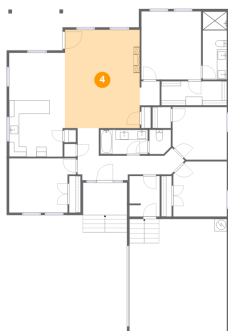
3 Floor 1 - W.I.C.



Dimensions: 13'4" x 4'11"
Area: 66 sq. ft
Counted as living area: Yes

Heated: Yes
Finished: Yes
Enclosed: Yes
Contiguous: Yes
Permitted: Yes
Wet space: No
Addition: No
Conversion: No

4 Floor 1 - Living Room



Dimensions: 15'3" x 20'0"
Area: 305 sq. ft
Counted as living area: Yes

Heated: Yes
Finished: Yes
Enclosed: Yes
Contiguous: Yes
Permitted: Yes
Wet space: No
Addition: No
Conversion: No

5 Floor 1 - Bedroom

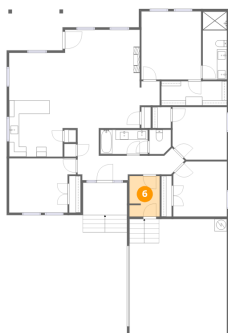


Dimensions: 13'7" x 11'1"
Area: 137 sq. ft
Counted as living area: Yes

Heated: Yes
Finished: Yes
Enclosed: Yes
Contiguous: Yes
Permitted: Yes
Wet space: No
Addition: No
Conversion: No

2201 Christine Drive, Canyon Creek, Granbury, Hood County, Texas, United States, 76048

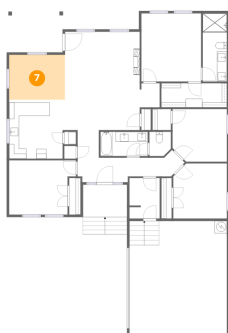
6 Floor 1 - Laundry



Dimensions: 6'2" x 8'3"
Area: 50 sq. ft
Counted as living area: Yes

Heated: Yes
Finished: Yes
Enclosed: Yes
Contiguous: Yes
Permitted: Yes
Wet space: No
Addition: No
Conversion: No

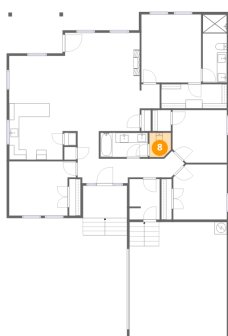
7 Floor 1 - Dining Area



Dimensions: 11'4" x 9'1"
Area: 104 sq. ft
Counted as living area: Yes

Heated: Yes
Finished: Yes
Enclosed: Yes
Contiguous: Yes
Permitted: Yes
Wet space: No
Addition: No
Conversion: No

8 Floor 1 - Bath



Dimensions: 4'4" x 4'11"
Area: 21 sq. ft
Counted as living area: Yes

Heated: Yes
Finished: Yes
Enclosed: Yes
Contiguous: Yes
Permitted: Yes
Wet space: Yes
Addition: No
Conversion: No

2201 Christine Drive, Canyon Creek, Granbury, Hood County, Texas, United States, 76048

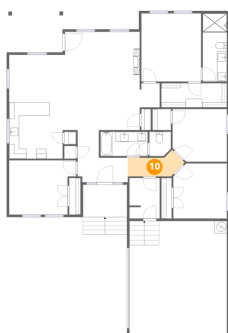
9 Floor 1 - Hall



Dimensions: 4'1" x 4'11"
Area: 20 sq. ft
Counted as living area: Yes

Heated: Yes
Finished: Yes
Enclosed: Yes
Contiguous: Yes
Permitted: Yes
Wet space: No
Addition: No
Conversion: No

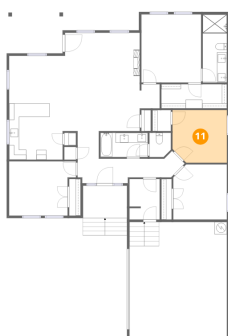
10 Floor 1 - Hall



Dimensions: 11'8" x 4'6"
Area: 42 sq. ft
Counted as living area: Yes

Heated: Yes
Finished: Yes
Enclosed: Yes
Contiguous: Yes
Permitted: Yes
Wet space: No
Addition: No
Conversion: No

11 Floor 1 - Bedroom

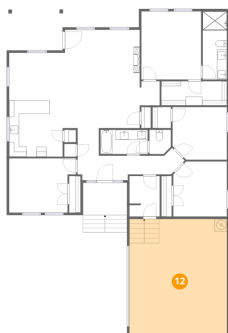


Dimensions: 11'1" x 10'9"
Area: 115 sq. ft
Counted as living area: Yes

Heated: Yes
Finished: Yes
Enclosed: Yes
Contiguous: Yes
Permitted: Yes
Wet space: No
Addition: No
Conversion: No

2201 Christine Drive, Canyon Creek, Granbury, Hood County, Texas, United States, 76048

12 Floor 1 - Garage



Dimensions: 19'10" x 23'6"
Area: 466 sq. ft
Counted as living area: No

Heated: No
Finished: No
Enclosed: Yes
Contiguous: Yes
Permitted: Yes
Wet space: No
Addition: No
Conversion: No

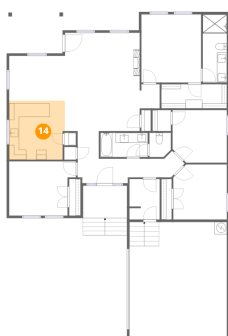
13 Floor 1 - Primary Bedroom



Dimensions: 12'2" x 13'10"
Area: 169 sq. ft
Counted as living area: Yes

Heated: Yes
Finished: Yes
Enclosed: Yes
Contiguous: Yes
Permitted: Yes
Wet space: No
Addition: No
Conversion: No

14 Floor 1 - Kitchen

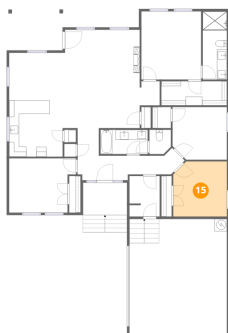


Dimensions: 11'4" x 12'0"
Area: 134 sq. ft
Counted as living area: Yes

Heated: Yes
Finished: Yes
Enclosed: Yes
Contiguous: Yes
Permitted: Yes
Wet space: No
Addition: No
Conversion: No

2201 Christine Drive, Canyon Creek, Granbury, Hood County, Texas, United States, 76048

15 Floor 1 - Bedroom



Dimensions: 10'11" x 11'3"
Area: 119 sq. ft
Counted as living area: Yes

Heated: Yes
Finished: Yes
Enclosed: Yes
Contiguous: Yes
Permitted: Yes
Wet space: No
Addition: No
Conversion: No

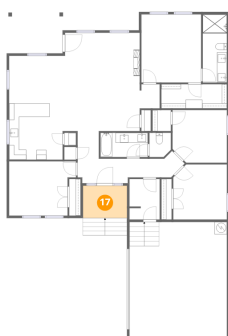
16 Floor 1 - Bath



Dimensions: 9'8" x 4'11"
Area: 48 sq. ft
Counted as living area: Yes

Heated: Yes
Finished: Yes
Enclosed: Yes
Contiguous: Yes
Permitted: Yes
Wet space: Yes
Addition: No
Conversion: No

17 Floor 1 - Porch



Dimensions: 8'11" x 6'7"
Area: 59 sq. ft
Counted as living area: No

Heated: No
Finished: No
Enclosed: No
Contiguous: Yes
Permitted: Yes
Wet space: No
Addition: No
Conversion: No

2201 Christine Drive, Canyon Creek, Granbury, Hood County, Texas, United States, 76048

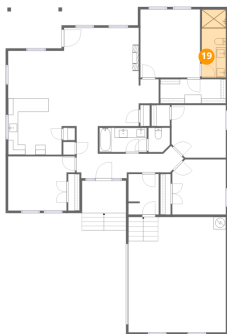
18 Floor 1 - Porch



Dimensions: 11'1" x 8'7"
Area: 96 sq. ft
Counted as living area: No

Heated: No
Finished: No
Enclosed: No
Contiguous: Yes
Permitted: Yes
Wet space: No
Addition: No
Conversion: No

19 Floor 1 - Bath



Dimensions: 4'11" x 13'10"
Area: 68 sq. ft
Counted as living area: Yes

Heated: Yes
Finished: Yes
Enclosed: Yes
Contiguous: Yes
Permitted: Yes
Wet space: Yes
Addition: No
Conversion: No