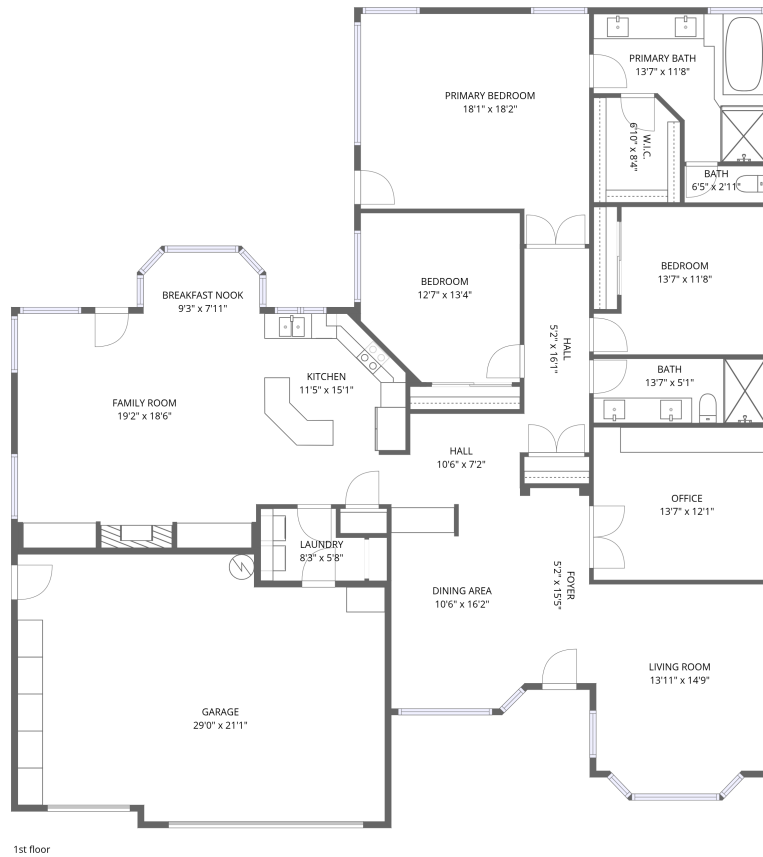


Home data report

13928 East Lupine Avenue, East Shea, Scottsdale, Maricopa County, Arizona, United States, 85259



Total Area: 2364 sq. ft

1st Floor: 2364 sq. ft

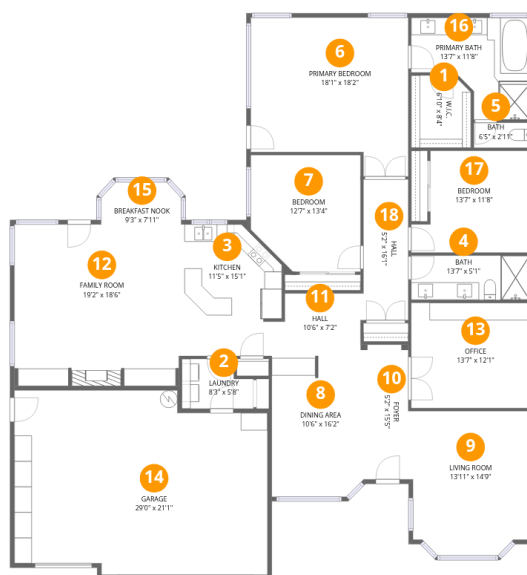
Excluded: Garage 574 sq. ft, Walls: 154 sq. ft

Property summary



Home data report

13928 East Lupine Avenue, East Shea, Scottsdale, Maricopa County, Arizona, United States, 85259



Room dimensions

Floor 1

Total:2364sqft Excluded: 574sqft

| # | | Dimensions | sqft | Counted as living area |
|----|-----------------|----------------|------------|------------------------|
| 1 | W.I.C. | 6'10" x 8'4" | 55 sq. ft | Yes |
| 2 | Laundry | 8'3" x 5'8" | 42 sq. ft | Yes |
| 3 | Kitchen | 11'5" x 15'1" | 158 sq. ft | Yes |
| 4 | Bath | 13'7" x 5'1" | 69 sq. ft | Yes |
| 5 | Bath | 6'5" x 2'11" | 18 sq. ft | Yes |
| 6 | Primary Bedroom | 18'1" x 18'2" | 293 sq. ft | Yes |
| 7 | Bedroom | 12'7" x 13'4" | 157 sq. ft | Yes |
| 8 | Dining Area | 10'6" x 16'2" | 168 sq. ft | Yes |
| 9 | Living Room | 13'11" x 14'9" | 217 sq. ft | Yes |
| 10 | Foyer | 5'2" x 15'5" | 79 sq. ft | Yes |
| 11 | Hall | 10'6" x 7'2" | 70 sq. ft | Yes |

Home data report

13928 East Lupine Avenue, East Shea, Scottsdale, Maricopa County, Arizona, United States, 85259

| # | | Dimensions | sqft | Counted as living area |
|----|----------------|---------------|------------|------------------------|
| 12 | Family Room | 19'2" x 18'6" | 324 sq. ft | Yes |
| 13 | Office | 13'7" x 12'1" | 164 sq. ft | Yes |
| 14 | Garage | 29'0" x 21'1" | 573 sq. ft | No |
| 15 | Breakfast Nook | 9'3" x 7'11" | 71 sq. ft | Yes |
| 16 | Primary Bath | 13'7" x 11'8" | 122 sq. ft | Yes |
| 17 | Bedroom | 13'7" x 11'8" | 140 sq. ft | Yes |
| 18 | Hall | 5'2" x 16'1" | 83 sq. ft | Yes |

13928 East Lupine Avenue, East Shea, Scottsdale, Maricopa County, Arizona, United States, 85259

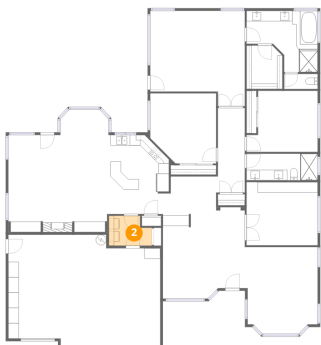
1 Floor 1 - W.I.C.



Dimensions: 6'10" x 8'4"
Area: 55 sq. ft
Counted as living area: Yes

Heated: Yes
Finished: Yes
Enclosed: Yes
Contiguous: Yes
Permitted: Yes
Wet space: No
Addition: No
Conversion: No

2 Floor 1 - Laundry

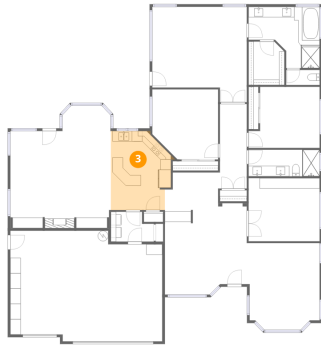


Dimensions: 8'3" x 5'8"
Area: 42 sq. ft
Counted as living area: Yes

Heated: Yes
Finished: Yes
Enclosed: Yes
Contiguous: Yes
Permitted: Yes
Wet space: No
Addition: No
Conversion: No

13928 East Lupine Avenue, East Shea, Scottsdale, Maricopa County, Arizona, United States, 85259

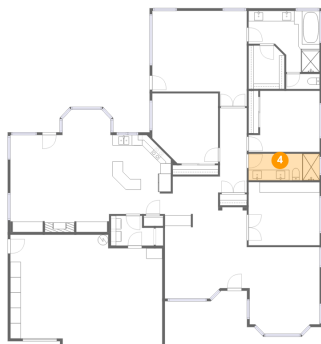
3 Floor 1 - Kitchen



Dimensions: 11'5" x 15'1"
Area: 158 sq. ft
Counted as living area: Yes

Heated: Yes
Finished: Yes
Enclosed: Yes
Contiguous: Yes
Permitted: Yes
Wet space: No
Addition: No
Conversion: No

4 Floor 1 - Bath



Dimensions: 13'7" x 5'1"
Area: 69 sq. ft
Counted as living area: Yes

Heated: Yes
Finished: Yes
Enclosed: Yes
Contiguous: Yes
Permitted: Yes
Wet space: Yes
Addition: No
Conversion: No

5 Floor 1 - Bath



Dimensions: 6'5" x 2'11"
Area: 18 sq. ft
Counted as living area: Yes

Heated: Yes
Finished: Yes
Enclosed: Yes
Contiguous: Yes
Permitted: Yes
Wet space: Yes
Addition: No
Conversion: No

13928 East Lupine Avenue, East Shea, Scottsdale, Maricopa County, Arizona, United States, 85259

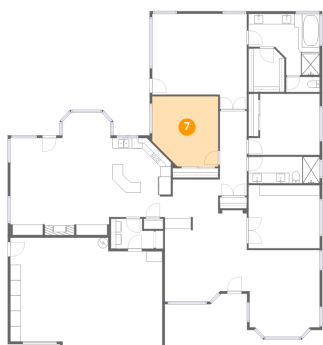
6 Floor 1 - Primary Bedroom



Dimensions: 18'1" x 18'2"
Area: 293 sq. ft
Counted as living area: Yes

Heated: Yes
Finished: Yes
Enclosed: Yes
Contiguous: Yes
Permitted: Yes
Wet space: No
Addition: No
Conversion: No

7 Floor 1 - Bedroom



Dimensions: 12'7" x 13'4"
Area: 157 sq. ft
Counted as living area: Yes

Heated: Yes
Finished: Yes
Enclosed: Yes
Contiguous: Yes
Permitted: Yes
Wet space: No
Addition: No
Conversion: No

8 Floor 1 - Dining Area

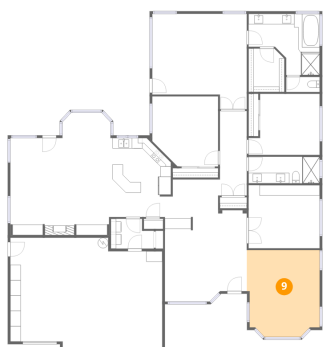


Dimensions: 10'6" x 16'2"
Area: 168 sq. ft
Counted as living area: Yes

Heated: Yes
Finished: Yes
Enclosed: Yes
Contiguous: Yes
Permitted: Yes
Wet space: No
Addition: No
Conversion: No

13928 East Lupine Avenue, East Shea, Scottsdale, Maricopa County, Arizona, United States, 85259

9 Floor 1 - Living Room



Dimensions: 13'11" x 14'9"
Area: 217 sq. ft
Counted as living area: Yes

Heated: Yes
Finished: Yes
Enclosed: Yes
Contiguous: Yes
Permitted: Yes
Wet space: No
Addition: No
Conversion: No

10 Floor 1 - Foyer



Dimensions: 5'2" x 15'5"
Area: 79 sq. ft
Counted as living area: Yes

Heated: Yes
Finished: Yes
Enclosed: Yes
Contiguous: Yes
Permitted: Yes
Wet space: No
Addition: No
Conversion: No

11 Floor 1 - Hall



Dimensions: 10'6" x 7'2"
Area: 70 sq. ft
Counted as living area: Yes

Heated: Yes
Finished: Yes
Enclosed: Yes
Contiguous: Yes
Permitted: Yes
Wet space: No
Addition: No
Conversion: No

13928 East Lupine Avenue, East Shea, Scottsdale, Maricopa County, Arizona, United States, 85259

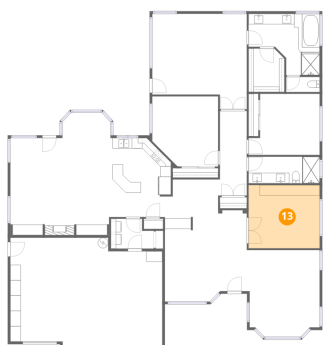
12 Floor 1 - Family Room



Dimensions: 19'2" x 18'6"
Area: 324 sq. ft
Counted as living area: Yes

Heated: Yes
Finished: Yes
Enclosed: Yes
Contiguous: Yes
Permitted: Yes
Wet space: No
Addition: No
Conversion: No

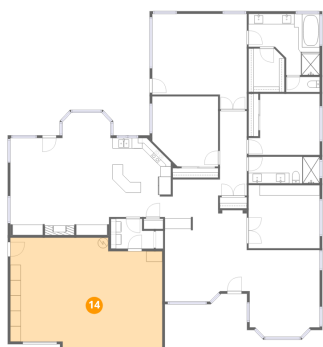
13 Floor 1 - Office



Dimensions: 13'7" x 12'1"
Area: 164 sq. ft
Counted as living area: Yes

Heated: Yes
Finished: Yes
Enclosed: Yes
Contiguous: Yes
Permitted: Yes
Wet space: No
Addition: No
Conversion: No

14 Floor 1 - Garage



Dimensions: 29'0" x 21'1"
Area: 573 sq. ft
Counted as living area: No

Heated: No
Finished: No
Enclosed: Yes
Contiguous: Yes
Permitted: Yes
Wet space: No
Addition: No
Conversion: No

13928 East Lupine Avenue, East Shea, Scottsdale, Maricopa County, Arizona, United States, 85259

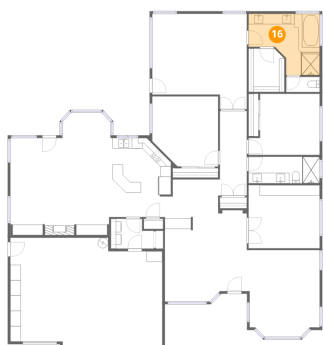
15 Floor 1 - Breakfast Nook



Dimensions: 9'3" x 7'11"
Area: 71 sq. ft
Counted as living area: Yes

Heated: Yes
Finished: Yes
Enclosed: Yes
Contiguous: Yes
Permitted: Yes
Wet space: No
Addition: No
Conversion: No

16 Floor 1 - Primary Bath



Dimensions: 13'7" x 11'8"
Area: 122 sq. ft
Counted as living area: Yes

Heated: Yes
Finished: Yes
Enclosed: Yes
Contiguous: Yes
Permitted: Yes
Wet space: Yes
Addition: No
Conversion: No

17 Floor 1 - Bedroom



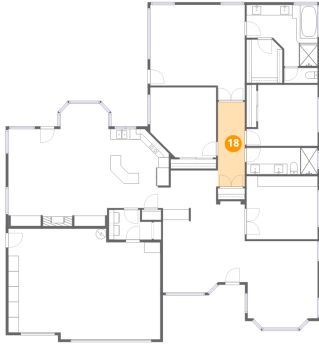
Dimensions: 13'7" x 11'8"
Area: 140 sq. ft
Counted as living area: Yes

Heated: Yes
Finished: Yes
Enclosed: Yes
Contiguous: Yes
Permitted: Yes
Wet space: No
Addition: No
Conversion: No

Home data report

13928 East Lupine Avenue, East Shea, Scottsdale, Maricopa County, Arizona, United States, 85259

18 Floor 1 - Hall



Dimensions: 5'2" x 16'1"
Area: 83 sq. ft
Counted as living area: Yes

Heated: Yes
Finished: Yes
Enclosed: Yes
Contiguous: Yes
Permitted: Yes
Wet space: No
Addition: No
Conversion: No