

Home data report

2025 Thornwood Avenue, Wilmette, Cook County, Illinois, United States, 60091



Total Area: 2682 sq. ft

Basement: 473 sq. ft, 1st Floor: 1323 sq. ft, 2nd Floor: 886 sq. ft

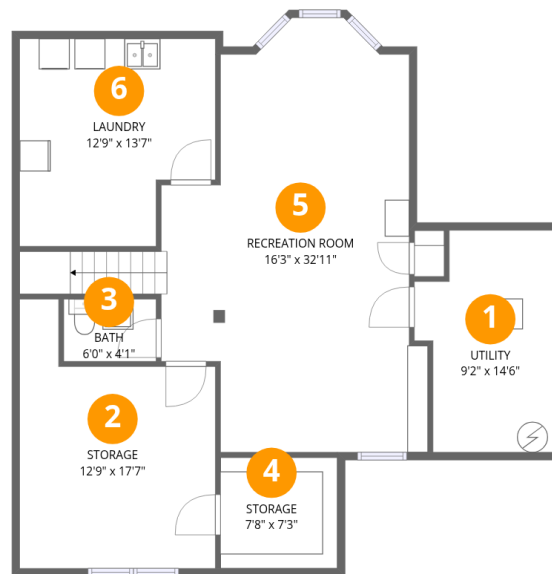
Excluded: Storage 238 sq. ft, Utility 116 sq. ft, Laundry 157 sq. ft, Patio 237 sq. ft, Walls: 240 sq. ft

Property summary



Home data report

2025 Thornwood Avenue, Wilmette, Cook County, Illinois, United States, 60091



Room dimensions

Floor 1 Below grade

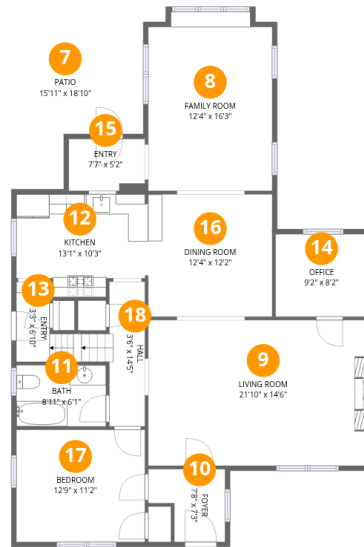
Total:473sqft

Excluded: 511sqft

#		Dimensions	sqft	Counted as living area
1	Utility	9'2" x 14'6"	133 sq. ft	No
2	Storage	12'9" x 17'7"	225 sq. ft	No
3	Bath	6'0" x 4'1"	24 sq. ft	Yes
4	Storage	7'8" x 7'3"	55 sq. ft	No
5	Recreation Room	16'3" x 32'11"	535 sq. ft	Yes
6	Laundry	12'9" x 13'7"	173 sq. ft	No

Home data report

2025 Thornwood Avenue, Wilmette, Cook County, Illinois, United States, 60091



Room dimensions

Floor 2

Total:1323sqft Excluded: 237sqft

#		Dimensions	sqft	Counted as living area
7	Patio	15'11" x 18'10"	299 sq. ft	No
8	Family Room	12'4" x 16'3"	200 sq. ft	Yes
9	Living Room	21'10" x 14'6"	316 sq. ft	Yes
10	Foyer	7'8" x 7'3"	55 sq. ft	Yes
11	Bath	8'11" x 6'1"	54 sq. ft	Yes
12	Kitchen	13'1" x 10'3"	134 sq. ft	Yes
13	Entry	3'3" x 6'10"	22 sq. ft	Yes
14	Office	9'2" x 8'2"	75 sq. ft	Yes
15	Entry	7'7" x 5'2"	39 sq. ft	Yes
16	Dining Room	12'4" x 12'2"	150 sq. ft	Yes
17	Bedroom	12'9" x 11'2"	143 sq. ft	Yes

Home data report

2025 Thornwood Avenue, Wilmette, Cook County, Illinois, United States, 60091

#		Dimensions	sqft	Counted as living area
18	Hall	3'6" x 14'5"	51 sq. ft	Yes

Home data report

2025 Thornwood Avenue, Wilmette, Cook County, Illinois, United States, 60091



Room dimensions

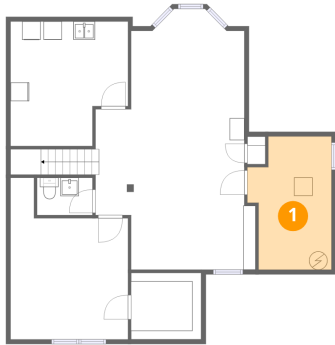
Floor 3

Total:886sqft

Excluded: 0sqft

#		Dimensions	sqft	Counted as living area
19	Hall	3'6" x 16'1"	56 sq. ft	Yes
20	Study	5'0" x 5'2"	26 sq. ft	Yes
21	Hall	7'9" x 14'10"	115 sq. ft	Yes
22	Bedroom	12'9" x 10'8"	137 sq. ft	Yes
23	Primary Bedroom	12'4" x 13'9"	169 sq. ft	Yes
24	Bedroom	12'9" x 10'3"	131 sq. ft	Yes
25	W.I.C.	8'6" x 6'8"	56 sq. ft	Yes
26	Bath	8'11" x 6'7"	58 sq. ft	Yes
27	Bath	8'6" x 9'1"	77 sq. ft	Yes

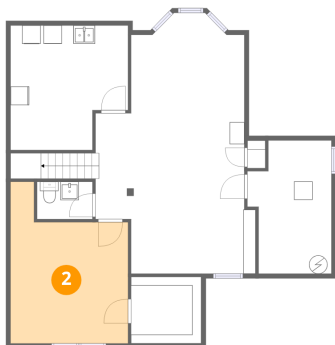
1 Floor 1 - Utility



Dimensions: 9'2" x 14'6"
Area: 133 sq. ft
Counted as living area: No

Heated: Yes
Finished: No
Enclosed: Yes
Contiguous: Yes
Permitted: Yes
Wet space: No
Addition: No
Conversion: No

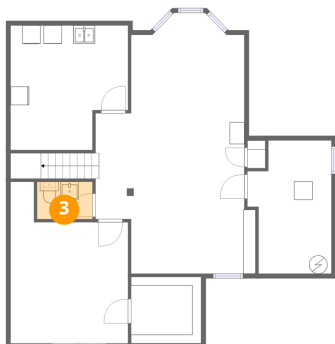
2 Floor 1 - Storage



Dimensions: 12'9" x 17'7"
Area: 225 sq. ft
Counted as living area: No

Heated: No
Finished: No
Enclosed: No
Contiguous: Yes
Permitted: Yes
Wet space: No
Addition: No
Conversion: No

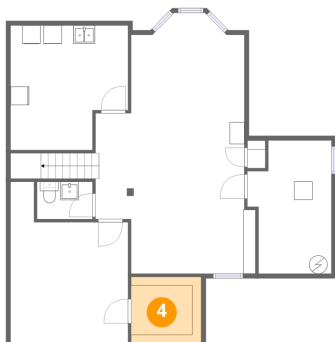
3 Floor 1 - Bath



Dimensions: 6'0" x 4'1"
Area: 24 sq. ft
Counted as living area: Yes

Heated: Yes
Finished: Yes
Enclosed: Yes
Contiguous: Yes
Permitted: Yes
Wet space: Yes
Addition: No
Conversion: No

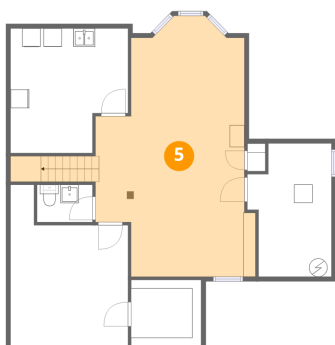
4 Floor 1 - Storage



Dimensions: 7'8" x 7'3"
Area: 55 sq. ft
Counted as living area: No

Heated: No
Finished: No
Enclosed: No
Contiguous: Yes
Permitted: Yes
Wet space: No
Addition: No
Conversion: No

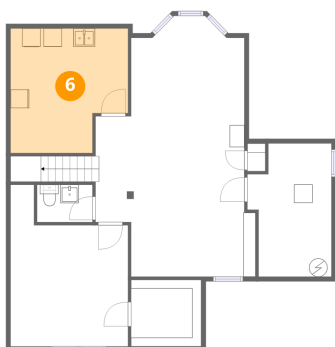
5 Floor 1 - Recreation Room



Dimensions: 16'3" x 32'11"
Area: 535 sq. ft
Counted as living area: Yes

Heated: Yes
Finished: Yes
Enclosed: Yes
Contiguous: Yes
Permitted: Yes
Wet space: No
Addition: No
Conversion: No

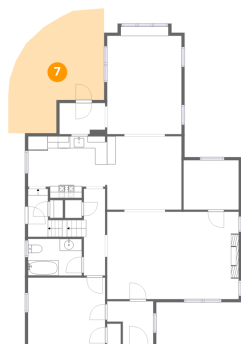
6 Floor 1 - Laundry



Dimensions: 12'9" x 13'7"
Area: 173 sq. ft
Counted as living area: No

Heated: Yes
Finished: No
Enclosed: Yes
Contiguous: Yes
Permitted: Yes
Wet space: No
Addition: No
Conversion: No

7 Floor 2 - Patio



Dimensions: 15'11" x 18'10"
Area: 299 sq. ft
Counted as living area: No

Heated: No
Finished: No
Enclosed: No
Contiguous: Yes
Permitted: Yes
Wet space: No
Addition: No
Conversion: No

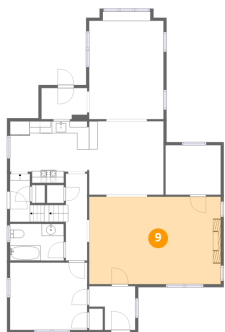
8 Floor 2 - Family Room



Dimensions: 12'4" x 16'3"
Area: 200 sq. ft
Counted as living area: Yes

Heated: Yes
Finished: Yes
Enclosed: Yes
Contiguous: Yes
Permitted: Yes
Wet space: No
Addition: No
Conversion: No

9 Floor 2 - Living Room



Dimensions: 21'10" x 14'6"
Area: 316 sq. ft
Counted as living area: Yes

Heated: Yes
Finished: Yes
Enclosed: Yes
Contiguous: Yes
Permitted: Yes
Wet space: No
Addition: No
Conversion: No

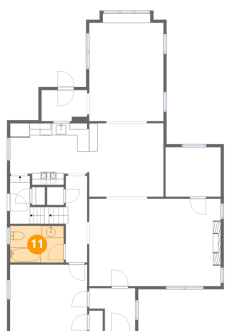
10 Floor 2 - Foyer



Dimensions: 7'8" x 7'3"
Area: 55 sq. ft
Counted as living area: Yes

Heated: Yes
Finished: Yes
Enclosed: Yes
Contiguous: Yes
Permitted: Yes
Wet space: No
Addition: No
Conversion: No

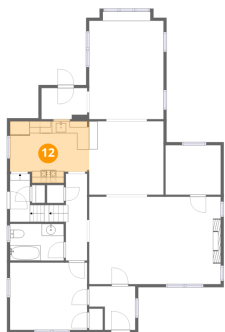
11 Floor 2 - Bath



Dimensions: 8'11" x 6'1"
Area: 54 sq. ft
Counted as living area: Yes

Heated: Yes
Finished: Yes
Enclosed: Yes
Contiguous: Yes
Permitted: Yes
Wet space: Yes
Addition: No
Conversion: No

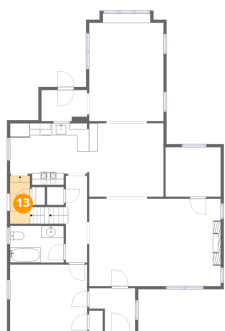
12 Floor 2 - Kitchen



Dimensions: 13'1" x 10'3"
Area: 134 sq. ft
Counted as living area: Yes

Heated: Yes
Finished: Yes
Enclosed: Yes
Contiguous: Yes
Permitted: Yes
Wet space: No
Addition: No
Conversion: No

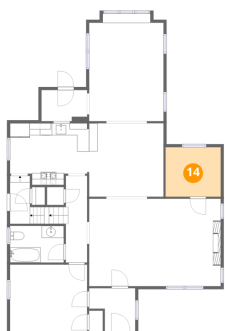
13 Floor 2 - Entry



Dimensions: 3'3" x 6'10"
Area: 22 sq. ft
Counted as living area: Yes

Heated: Yes
Finished: Yes
Enclosed: Yes
Contiguous: Yes
Permitted: Yes
Wet space: No
Addition: No
Conversion: No

14 Floor 2 - Office



Dimensions: 9'2" x 8'2"
Area: 75 sq. ft
Counted as living area: Yes

Heated: Yes
Finished: Yes
Enclosed: Yes
Contiguous: Yes
Permitted: Yes
Wet space: No
Addition: No
Conversion: No

15 Floor 2 - Entry



Dimensions: 7'7" x 5'2"
Area: 39 sq. ft
Counted as living area: Yes

Heated: Yes
Finished: Yes
Enclosed: Yes
Contiguous: Yes
Permitted: Yes
Wet space: No
Addition: No
Conversion: No

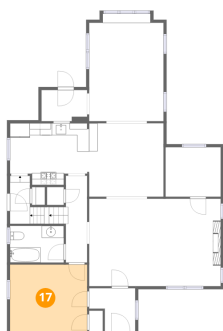
16 Floor 2 - Dining Room



Dimensions: 12'4" x 12'2"
Area: 150 sq. ft
Counted as living area: Yes

Heated: Yes
Finished: Yes
Enclosed: Yes
Contiguous: Yes
Permitted: Yes
Wet space: No
Addition: No
Conversion: No

17 Floor 2 - Bedroom



Dimensions: 12'9" x 11'2"
Area: 143 sq. ft
Counted as living area: Yes

Heated: Yes
Finished: Yes
Enclosed: Yes
Contiguous: Yes
Permitted: Yes
Wet space: No
Addition: No
Conversion: No

18 Floor 2 - Hall



Dimensions: 3'6" x 14'5"
Area: 51 sq. ft
Counted as living area: Yes

Heated: Yes
Finished: Yes
Enclosed: Yes
Contiguous: Yes
Permitted: Yes
Wet space: No
Addition: No
Conversion: No

19 Floor 3 - Hall



Dimensions: 3'6" x 16'1"
Area: 56 sq. ft
Counted as living area: Yes

Heated: Yes
Finished: Yes
Enclosed: Yes
Contiguous: Yes
Permitted: Yes
Wet space: No
Addition: No
Conversion: No

20 Floor 3 - Study



Dimensions: 5'0" x 5'2"
Area: 26 sq. ft
Counted as living area: Yes

Heated: Yes
Finished: Yes
Enclosed: Yes
Contiguous: Yes
Permitted: Yes
Wet space: No
Addition: No
Conversion: No

21 Floor 3 - Hall



Dimensions: 7'9" x 14'10"
Area: 115 sq. ft
Counted as living area: Yes

Heated: Yes
Finished: Yes
Enclosed: Yes
Contiguous: Yes
Permitted: Yes
Wet space: No
Addition: No
Conversion: No

22 Floor 3 - Bedroom



Dimensions: 12'9" x 10'8"
Area: 137 sq. ft
Counted as living area: Yes

Heated: Yes
Finished: Yes
Enclosed: Yes
Contiguous: Yes
Permitted: Yes
Wet space: No
Addition: No
Conversion: No

23 Floor 3 - Primary Bedroom



Dimensions: 12'4" x 13'9"
Area: 169 sq. ft
Counted as living area: Yes

Heated: Yes
Finished: Yes
Enclosed: Yes
Contiguous: Yes
Permitted: Yes
Wet space: No
Addition: No
Conversion: No

24 Floor 3 - Bedroom



Dimensions: 12'9" x 10'3"
Area: 131 sq. ft
Counted as living area: Yes

Heated: Yes
Finished: Yes
Enclosed: Yes
Contiguous: Yes
Permitted: Yes
Wet space: No
Addition: No
Conversion: No

25 Floor 3 - W.I.C.



Dimensions: 8'6" x 6'8"
Area: 56 sq. ft
Counted as living area: Yes

Heated: Yes
Finished: Yes
Enclosed: Yes
Contiguous: Yes
Permitted: Yes
Wet space: No
Addition: No
Conversion: No

26 Floor 3 - Bath



Dimensions: 8'11" x 6'7"
Area: 58 sq. ft
Counted as living area: Yes

Heated: Yes
Finished: Yes
Enclosed: Yes
Contiguous: Yes
Permitted: Yes
Wet space: Yes
Addition: No
Conversion: No

Home data report

2025 Thornwood Avenue, Wilmette, Cook County, Illinois, United States, 60091

27 Floor 3 - Bath



Dimensions: 8'6" x 9'1"
Area: 77 sq. ft
Counted as living area: Yes

Heated: Yes
Finished: Yes
Enclosed: Yes
Contiguous: Yes
Permitted: Yes
Wet space: Yes
Addition: No
Conversion: No