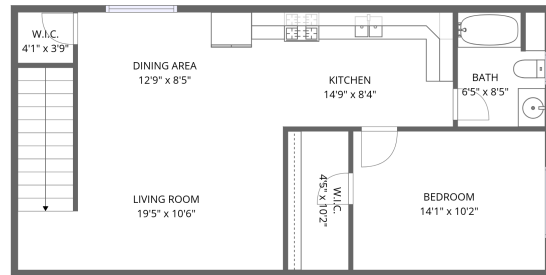


1st floor



2nd floor

## Total Area: 869 sq. ft

1st Floor: 137 sq. ft, 2nd Floor: 732 sq. ft

Excluded: Garage 2075 sq. ft, Walls: 176 sq. ft


## Property summary



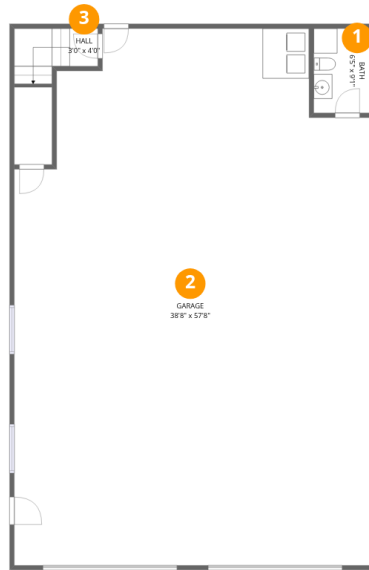
Home data report

5952 W Appalachian Ave, Wasilla, AK, US



 **1**  
Half baths

 **1**  
Garages



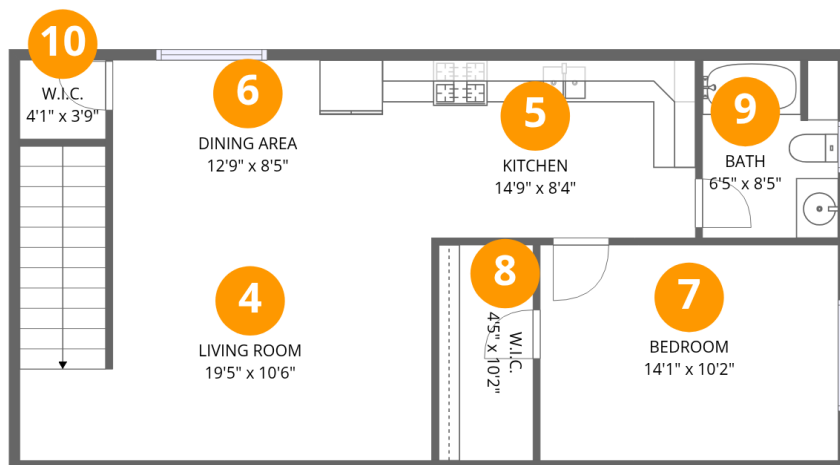
## Room dimensions

Floor 1

Total:137sqft

Excluded: 2075sqft

| # |        | Dimensions    | sqft        | Counted as living area |
|---|--------|---------------|-------------|------------------------|
| 1 | Bath   | 6'5" x 9'1"   | 59 sq. ft   | Yes                    |
| 2 | Garage | 38'8" x 57'8" | 2232 sq. ft | No                     |
| 3 | Hall   | 3'0" x 4'0"   | 12 sq. ft   | Yes                    |



## Room dimensions

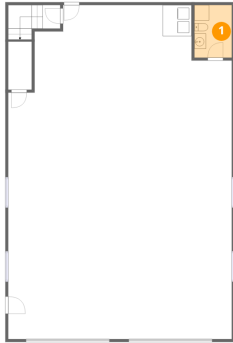
Floor 2

Total:732sqft Excluded: 0sqft

| #  |             | Dimensions    | sqft       | Counted as living area |
|----|-------------|---------------|------------|------------------------|
| 4  | Living Room | 19'5" x 10'6" | 204 sq. ft | Yes                    |
| 5  | Kitchen     | 14'9" x 8'4"  | 124 sq. ft | Yes                    |
| 6  | Dining Area | 12'9" x 8'5"  | 107 sq. ft | Yes                    |
| 7  | Bedroom     | 14'1" x 10'2" | 143 sq. ft | Yes                    |
| 8  | W.I.C.      | 4'5" x 10'2"  | 45 sq. ft  | Yes                    |
| 9  | Bath        | 6'5" x 8'5"   | 54 sq. ft  | Yes                    |
| 10 | W.I.C.      | 4'1" x 3'9"   | 15 sq. ft  | Yes                    |



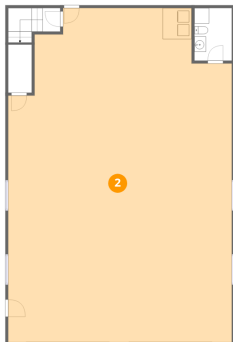
## 1 Floor 1 - Bath



Dimensions: 6'5" x 9'1"  
Area: 59 sq. ft  
Counted as living area: Yes

Heated: Yes  
Finished: Yes  
Enclosed: Yes  
Contiguous: Yes  
Permitted: Yes  
Wet space: Yes  
Addition: No  
Conversion: No

## 2 Floor 1 - Garage

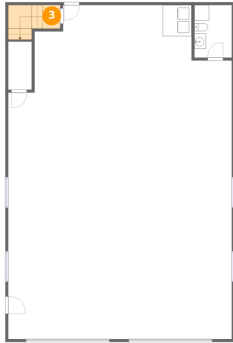


Dimensions: 38'8" x 57'8"  
Area: 2232 sq. ft  
Counted as living area: No

Heated: No  
Finished: No  
Enclosed: Yes  
Contiguous: Yes  
Permitted: Yes  
Wet space: No  
Addition: No  
Conversion: No



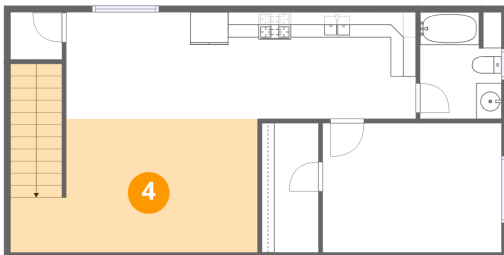
### 3 Floor 1 - Hall



Dimensions: 3'0" x 4'0"  
Area: 12 sq. ft  
Counted as living area: Yes

Heated: Yes  
Finished: Yes  
Enclosed: Yes  
Contiguous: Yes  
Permitted: Yes  
Wet space: No  
Addition: No  
Conversion: No

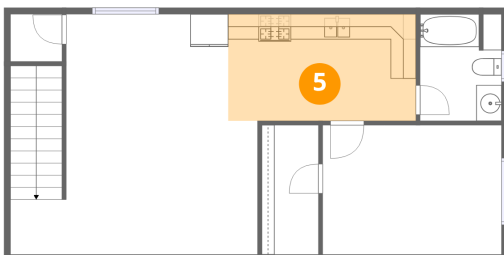
### 4 Floor 2 - Living Room



Dimensions: 19'5" x 10'6"  
Area: 204 sq. ft  
Counted as living area: Yes

Heated: Yes  
Finished: Yes  
Enclosed: Yes  
Contiguous: Yes  
Permitted: Yes  
Wet space: No  
Addition: No  
Conversion: No

### 5 Floor 2 - Kitchen

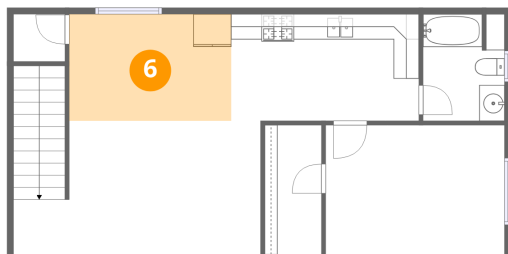


Dimensions: 14'9" x 8'4"  
Area: 124 sq. ft  
Counted as living area: Yes

Heated: Yes  
Finished: Yes  
Enclosed: Yes  
Contiguous: Yes  
Permitted: Yes  
Wet space: No  
Addition: No  
Conversion: No



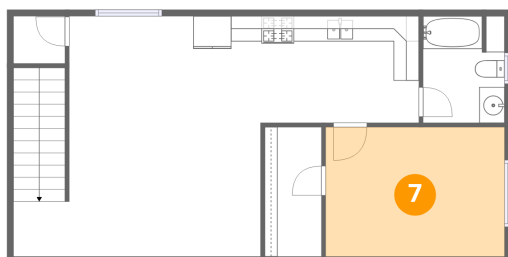
## 6 Floor 2 - Dining Area



Dimensions: 12'9" x 8'5"  
Area: 107 sq. ft  
Counted as living area: Yes

Heated: Yes  
Finished: Yes  
Enclosed: Yes  
Contiguous: Yes  
Permitted: Yes  
Wet space: No  
Addition: No  
Conversion: No

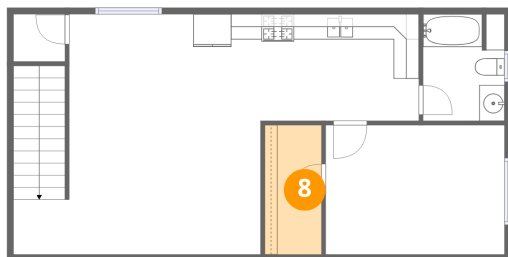
## 7 Floor 2 - Bedroom



Dimensions: 14'1" x 10'2"  
Area: 143 sq. ft  
Counted as living area: Yes

Heated: Yes  
Finished: Yes  
Enclosed: Yes  
Contiguous: Yes  
Permitted: Yes  
Wet space: No  
Addition: No  
Conversion: No

## 8 Floor 2 - W.I.C.

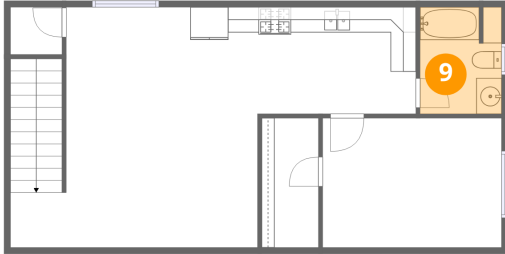


Dimensions: 4'5" x 10'2"  
Area: 45 sq. ft  
Counted as living area: Yes

Heated: Yes  
Finished: Yes  
Enclosed: Yes  
Contiguous: Yes  
Permitted: Yes  
Wet space: No  
Addition: No  
Conversion: No



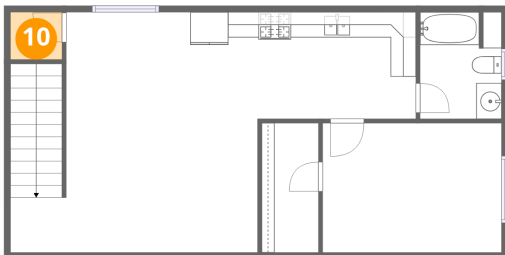
**9** Floor 2 - Bath



Dimensions: 6'5" x 8'5"  
Area: 54 sq. ft  
Counted as living area: Yes

Heated: Yes  
Finished: Yes  
Enclosed: Yes  
Contiguous: Yes  
Permitted: Yes  
Wet space: Yes  
Addition: No  
Conversion: No

**10** Floor 2 - W.I.C.



Dimensions: 4'1" x 3'9"  
Area: 15 sq. ft  
Counted as living area: Yes

Heated: Yes  
Finished: Yes  
Enclosed: Yes  
Contiguous: Yes  
Permitted: Yes  
Wet space: No  
Addition: No  
Conversion: No