

## Home data report

2512 Leach Drive, Naperville, Will County, Illinois, United States, 60564



**Total Area: 1707 sq. ft**

Basement: 0 sq. ft, 1st Floor: 534 sq. ft, 2nd Floor: 572 sq. ft, 3rd Floor: 601 sq. ft

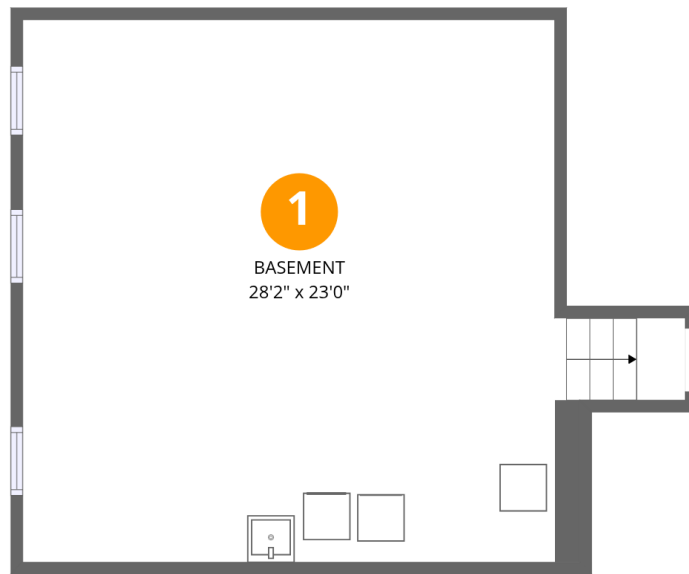
Excluded: Basement 548 sq. ft, Garage 450 sq. ft, Walls: 252 sq. ft

## Property summary



Home data report

2512 Leach Drive, Naperville, Will County, Illinois, United States, 60564



### Room dimensions

Floor 1 Below grade

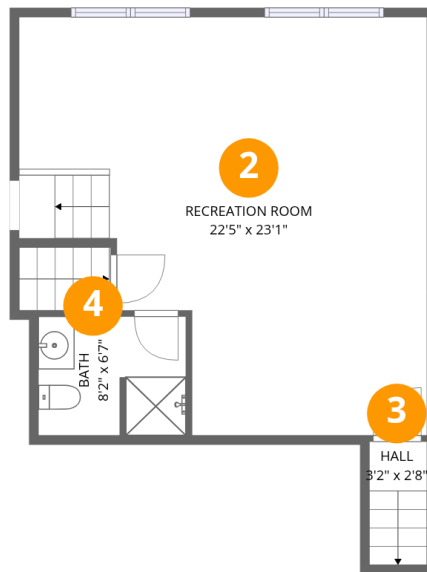
Total:0sqft

Excluded: 548sqft

#		Dimensions	sqft	Counted as living area
1	Basement	28'2" x 23'0"	648 sq. ft	No

Home data report

2512 Leach Drive, Naperville, Will County, Illinois, United States, 60564



## Room dimensions

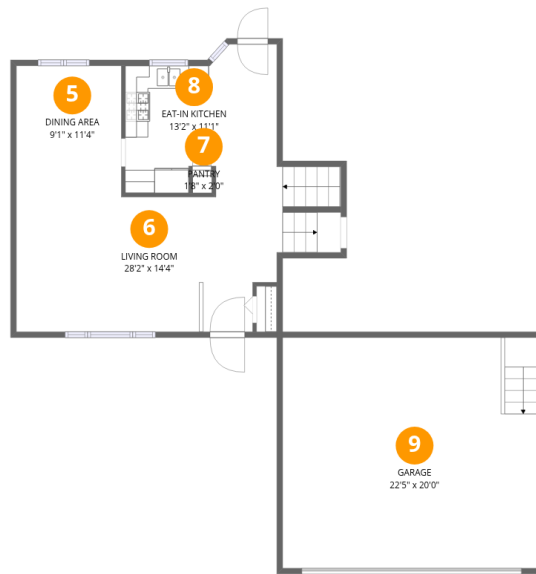
Floor 2

Total:534sqft Excluded: 0sqft

#		Dimensions	sqft	Counted as living area
2	Recreation Room	22'5" x 23'1"	517 sq. ft	Yes
3	Hall	3'2" x 2'8"	9 sq. ft	Yes
4	Bath	8'2" x 6'7"	53 sq. ft	Yes

# Home data report

2512 Leach Drive, Naperville, Will County, Illinois, United States, 60564



## Room dimensions

Floor 3

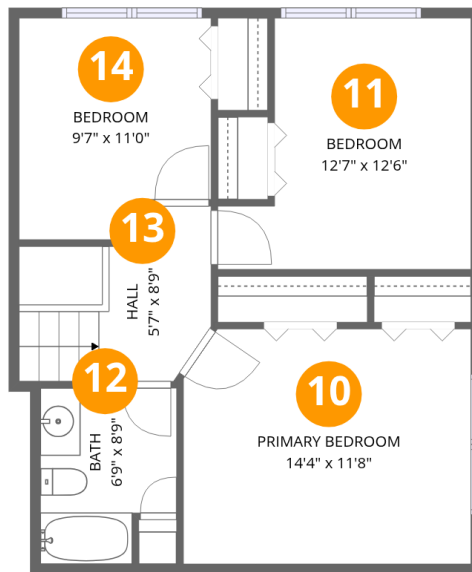
Total:572sqft

Excluded: 450sqft

#		Dimensions	sqft	Counted as living area
5	Dining Area	9'1" x 11'4"	103 sq. ft	Yes
6	Living Room	28'2" x 14'4"	403 sq. ft	Yes
7	Pantry	1'8" x 2'0"	3 sq. ft	Yes
8	Eat-in Kitchen	13'2" x 11'1"	145 sq. ft	Yes
9	Garage	22'5" x 20'0"	449 sq. ft	No

Home data report

2512 Leach Drive, Naperville, Will County, Illinois, United States, 60564



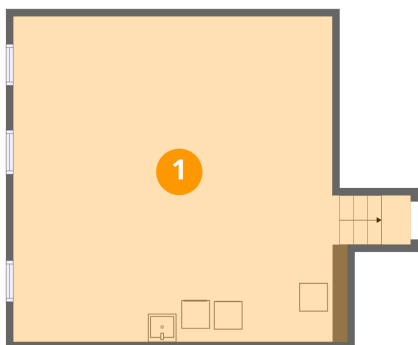
## Room dimensions

Floor 4

Total:601sqft Excluded: 0sqft

#		Dimensions	sqft	Counted as living area
10	Primary Bedroom	14'4" x 11'8"	167 sq. ft	Yes
11	Bedroom	12'7" x 12'6"	157 sq. ft	Yes
12	Bath	6'9" x 8'9"	59 sq. ft	Yes
13	Hall	5'7" x 8'9"	49 sq. ft	Yes
14	Bedroom	9'7" x 11'0"	105 sq. ft	Yes

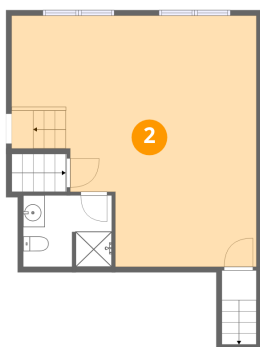
## 1 Floor 1 - Basement



Dimensions: 28'2" x 23'0"  
Area: 648 sq. ft  
Counted as living area: No

Heated: Yes  
Finished: No  
Enclosed: Yes  
Contiguous: Yes  
Permitted: Yes  
Wet space: No  
Addition: No  
Conversion: No

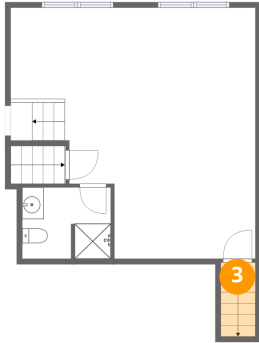
## 2 Floor 2 - Recreation Room



Dimensions: 22'5" x 23'1"  
Area: 517 sq. ft  
Counted as living area: Yes

Heated: Yes  
Finished: Yes  
Enclosed: Yes  
Contiguous: Yes  
Permitted: Yes  
Wet space: No  
Addition: No  
Conversion: No

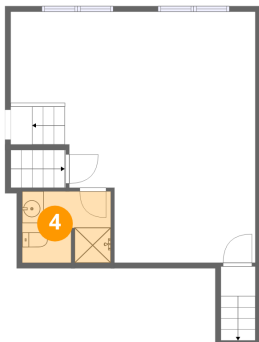
### 3 Floor 2 - Hall



Dimensions: 3'2" x 2'8"  
Area: 9 sq. ft  
Counted as living area: Yes

Heated: Yes  
Finished: Yes  
Enclosed: Yes  
Contiguous: Yes  
Permitted: Yes  
Wet space: No  
Addition: No  
Conversion: No

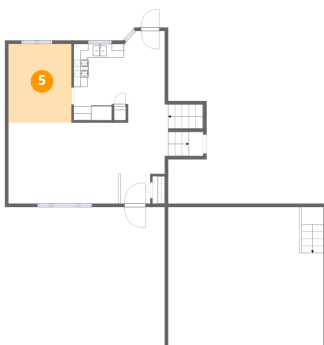
### 4 Floor 2 - Bath



Dimensions: 8'2" x 6'7"  
Area: 53 sq. ft  
Counted as living area: Yes

Heated: Yes  
Finished: Yes  
Enclosed: Yes  
Contiguous: Yes  
Permitted: Yes  
Wet space: Yes  
Addition: No  
Conversion: No

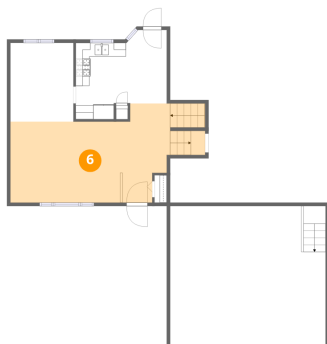
### 5 Floor 3 - Dining Area



Dimensions: 9'1" x 11'4"  
Area: 103 sq. ft  
Counted as living area: Yes

Heated: Yes  
Finished: Yes  
Enclosed: Yes  
Contiguous: Yes  
Permitted: Yes  
Wet space: No  
Addition: No  
Conversion: No

### 6 Floor 3 - Living Room



Dimensions: 28'2" x 14'4"  
Area: 403 sq. ft  
Counted as living area: Yes

Heated: Yes  
Finished: Yes  
Enclosed: Yes  
Contiguous: Yes  
Permitted: Yes  
Wet space: No  
Addition: No  
Conversion: No

### 7 Floor 3 - Pantry



Dimensions: 1'8" x 2'0"  
Area: 3 sq. ft  
Counted as living area: Yes

Heated: Yes  
Finished: Yes  
Enclosed: Yes  
Contiguous: Yes  
Permitted: Yes  
Wet space: No  
Addition: No  
Conversion: No

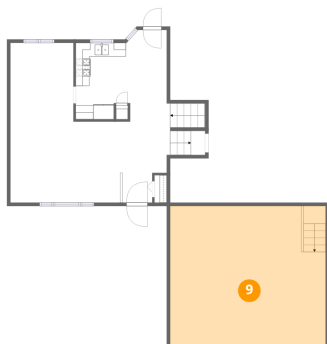
### 8 Floor 3 - Eat-in Kitchen



Dimensions: 13'2" x 11'1"  
Area: 145 sq. ft  
Counted as living area: Yes

Heated: Yes  
Finished: Yes  
Enclosed: Yes  
Contiguous: Yes  
Permitted: Yes  
Wet space: No  
Addition: No  
Conversion: No

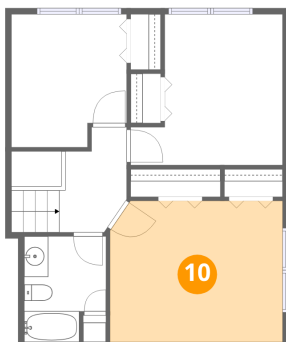
### 9 Floor 3 - Garage



Dimensions: 22'5" x 20'0"  
Area: 449 sq. ft  
Counted as living area: No

Heated: No  
Finished: No  
Enclosed: Yes  
Contiguous: Yes  
Permitted: Yes  
Wet space: No  
Addition: No  
Conversion: No

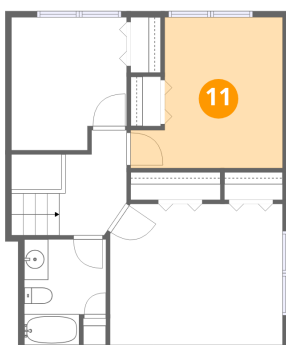
### 10 Floor 4 - Primary Bedroom



Dimensions: 14'4" x 11'8"  
Area: 167 sq. ft  
Counted as living area: Yes

Heated: Yes  
Finished: Yes  
Enclosed: Yes  
Contiguous: Yes  
Permitted: Yes  
Wet space: No  
Addition: No  
Conversion: No

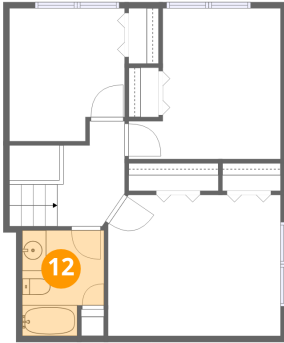
### 11 Floor 4 - Bedroom



Dimensions: 12'7" x 12'6"  
Area: 157 sq. ft  
Counted as living area: Yes

Heated: Yes  
Finished: Yes  
Enclosed: Yes  
Contiguous: Yes  
Permitted: Yes  
Wet space: No  
Addition: No  
Conversion: No

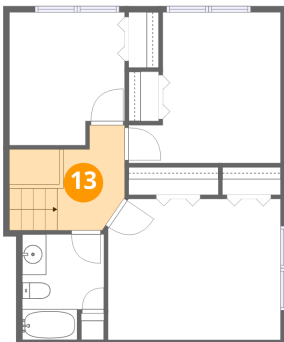
**12** Floor 4 - Bath



Dimensions: 6'9" x 8'9"  
Area: 59 sq. ft  
Counted as living area: Yes

Heated: Yes  
Finished: Yes  
Enclosed: Yes  
Contiguous: Yes  
Permitted: Yes  
Wet space: Yes  
Addition: No  
Conversion: No

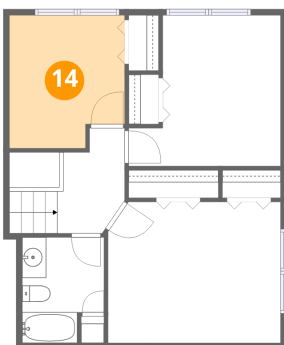
**13** Floor 4 - Hall



Dimensions: 5'7" x 8'9"  
Area: 49 sq. ft  
Counted as living area: Yes

Heated: Yes  
Finished: Yes  
Enclosed: Yes  
Contiguous: Yes  
Permitted: Yes  
Wet space: No  
Addition: No  
Conversion: No

**14** Floor 4 - Bedroom



Dimensions: 9'7" x 11'0"  
Area: 105 sq. ft  
Counted as living area: Yes

Heated: Yes  
Finished: Yes  
Enclosed: Yes  
Contiguous: Yes  
Permitted: Yes  
Wet space: No  
Addition: No  
Conversion: No