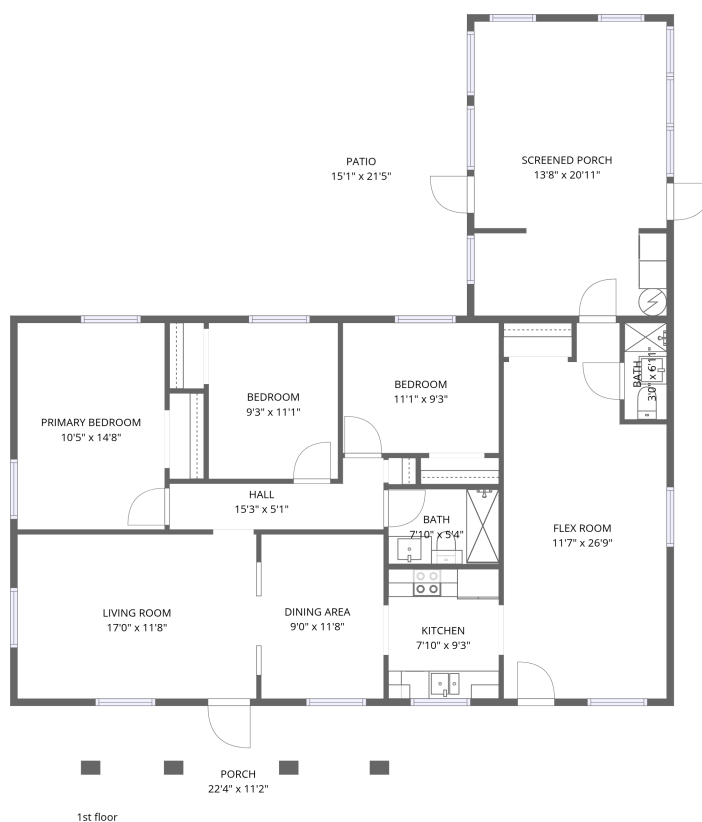


Home data report

1810 Green Ridge Road, Palm River-Clair Mel, Tampa, Hillsborough County, Florida, United States, 33619




Total Area: 1237 sq. ft

1st Floor: 1237 sq. ft

Excluded: Screened porch 287 sq. ft, Porch 201 sq. ft, Patio 324 sq. ft, Walls: 103 sq. ft

Property summary

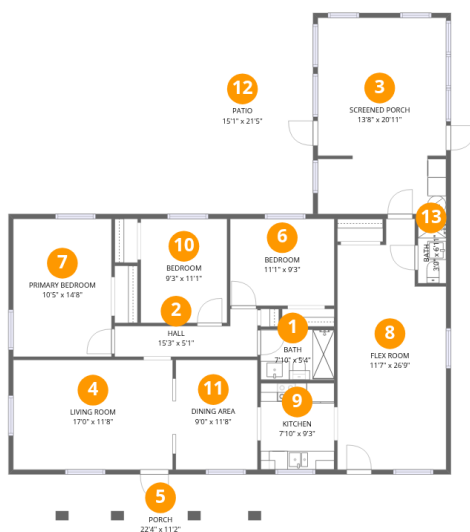
 **1** Floors

 **3** Bedrooms

 **2** Bathrooms

Home data report

1810 Green Ridge Road, Palm River-Clair Mel, Tampa, Hillsborough County, Florida, United States, 33619



Room dimensions

Floor 1

Total:1237sqft Excluded: 812sqft

#		Dimensions	sqft	Counted as living area
1	Bath	7'10" x 5'4"	42 sq. ft	Yes
2	Hall	15'3" x 5'1"	77 sq. ft	Yes
3	Screened Porch	13'8" x 20'11"	287 sq. ft	No
4	Living Room	17'0" x 11'8"	199 sq. ft	Yes
5	Porch	22'4" x 11'2"	250 sq. ft	No
6	Bedroom	11'1" x 9'3"	103 sq. ft	Yes
7	Primary Bedroom	10'5" x 14'8"	153 sq. ft	Yes
8	Flex Room	11'7" x 26'9"	311 sq. ft	Yes
9	Kitchen	7'10" x 9'3"	72 sq. ft	Yes
10	Bedroom	9'3" x 11'1"	102 sq. ft	Yes
11	Dining Area	9'0" x 11'8"	105 sq. ft	Yes

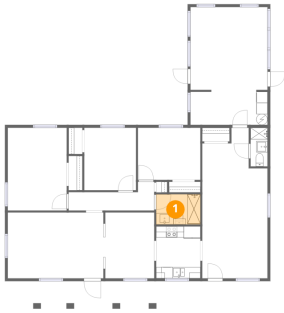
Home data report

**1810 Green Ridge Road, Palm River-Clair Mel, Tampa,
Hillsborough County, Florida, United States, 33619**

#		Dimensions	sqft	Counted as living area
12	Patio	15'1" x 21'5"	324 sq. ft	No
13	Bath	3'0" x 6'11"	21 sq. ft	Yes

1810 Green Ridge Road, Palm River-Clair Mel, Tampa,
Hillsborough County, Florida, United States, 33619

1 Floor 1 - Bath



Dimensions: 7'10" x 5'4"
Area: 42 sq. ft
Counted as living area: Yes

Heated: Yes
Finished: Yes
Enclosed: Yes
Contiguous: Yes
Permitted: Yes
Wet space: Yes
Addition: No
Conversion: No

2 Floor 1 - Hall

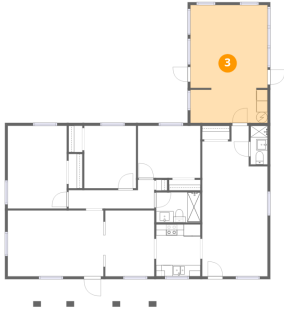


Dimensions: 15'3" x 5'1"
Area: 77 sq. ft
Counted as living area: Yes

Heated: Yes
Finished: Yes
Enclosed: Yes
Contiguous: Yes
Permitted: Yes
Wet space: No
Addition: No
Conversion: No

1810 Green Ridge Road, Palm River-Clair Mel, Tampa,
Hillsborough County, Florida, United States, 33619

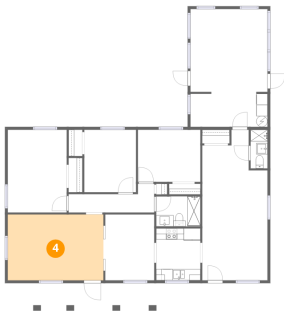
3 Floor 1 - Screened Porch



Dimensions: 13'8" x 20'11"
Area: 287 sq. ft
Counted as living area: No

Heated: No
Finished: No
Enclosed: No
Contiguous: Yes
Permitted: Yes
Wet space: No
Addition: No
Conversion: No

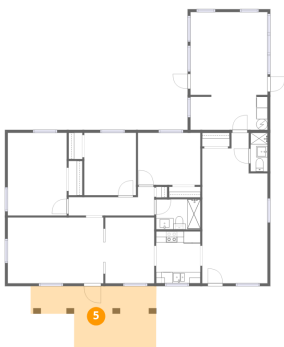
4 Floor 1 - Living Room



Dimensions: 17'0" x 11'8"
Area: 199 sq. ft
Counted as living area: Yes

Heated: Yes
Finished: Yes
Enclosed: Yes
Contiguous: Yes
Permitted: Yes
Wet space: No
Addition: No
Conversion: No

5 Floor 1 - Porch



Dimensions: 22'4" x 11'2"
Area: 250 sq. ft
Counted as living area: No

Heated: No
Finished: No
Enclosed: No
Contiguous: Yes
Permitted: Yes
Wet space: No
Addition: No
Conversion: No

1810 Green Ridge Road, Palm River-Clair Mel, Tampa,
Hillsborough County, Florida, United States, 33619

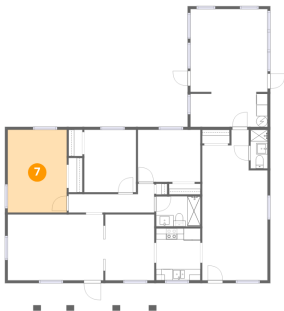
6 Floor 1 - Bedroom



Dimensions: 11'1" x 9'3"
Area: 103 sq. ft
Counted as living area: Yes

Heated: Yes
Finished: Yes
Enclosed: Yes
Contiguous: Yes
Permitted: Yes
Wet space: No
Addition: No
Conversion: No

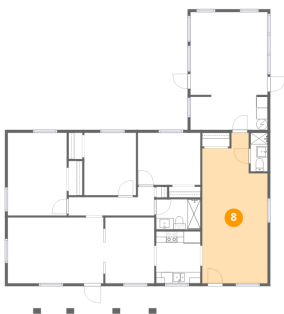
7 Floor 1 - Primary Bedroom



Dimensions: 10'5" x 14'8"
Area: 153 sq. ft
Counted as living area: Yes

Heated: Yes
Finished: Yes
Enclosed: Yes
Contiguous: Yes
Permitted: Yes
Wet space: No
Addition: No
Conversion: No

8 Floor 1 - Flex Room



Dimensions: 11'7" x 26'9"
Area: 311 sq. ft
Counted as living area: Yes

Heated: Yes
Finished: Yes
Enclosed: Yes
Contiguous: Yes
Permitted: Yes
Wet space: No
Addition: No
Conversion: No

1810 Green Ridge Road, Palm River-Clair Mel, Tampa,
Hillsborough County, Florida, United States, 33619

9 Floor 1 - Kitchen



Dimensions: 7'10" x 9'3"
Area: 72 sq. ft
Counted as living area: Yes

Heated: Yes
Finished: Yes
Enclosed: Yes
Contiguous: Yes
Permitted: Yes
Wet space: No
Addition: No
Conversion: No

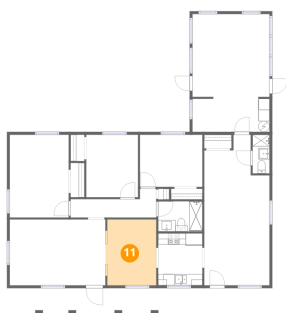
10 Floor 1 - Bedroom



Dimensions: 9'3" x 11'1"
Area: 102 sq. ft
Counted as living area: Yes

Heated: Yes
Finished: Yes
Enclosed: Yes
Contiguous: Yes
Permitted: Yes
Wet space: No
Addition: No
Conversion: No

11 Floor 1 - Dining Area

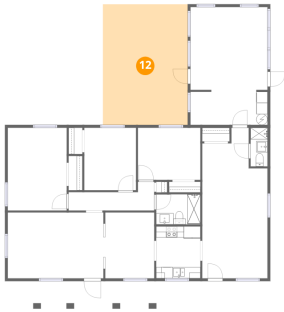


Dimensions: 9'0" x 11'8"
Area: 105 sq. ft
Counted as living area: Yes

Heated: Yes
Finished: Yes
Enclosed: Yes
Contiguous: Yes
Permitted: Yes
Wet space: No
Addition: No
Conversion: No

1810 Green Ridge Road, Palm River-Clair Mel, Tampa,
Hillsborough County, Florida, United States, 33619

12 Floor 1 - Patio



Dimensions: 15'1" x 21'5"
Area: 324 sq. ft
Counted as living area: No

Heated: No
Finished: No
Enclosed: No
Contiguous: Yes
Permitted: Yes
Wet space: No
Addition: No
Conversion: No

13 Floor 1 - Bath



Dimensions: 3'0" x 6'11"
Area: 21 sq. ft
Counted as living area: Yes

Heated: Yes
Finished: Yes
Enclosed: Yes
Contiguous: Yes
Permitted: Yes
Wet space: Yes
Addition: No
Conversion: No