

Home data report

705 Treys Dr, Winchester, VA, US



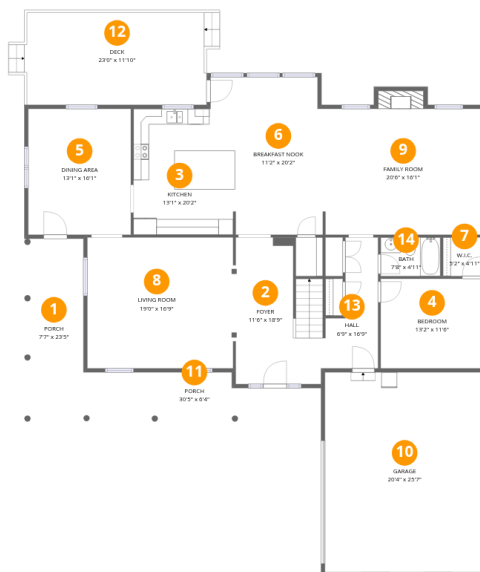
Total Area: 3994 sq. ft

1st Floor: 1885 sq. ft, 2nd Floor: 2109 sq. ft

Excluded: Garage 519 sq. ft, Porch 346 sq. ft, Deck 270 sq. ft, Fireplace 16 sq. ft, Low ceiling 69 sq. ft, Walls: 256 sq. ft

Property summary





Room dimensions

Floor 1

Total:1885sqft

Excluded: 1151sqft

#		Dimensions	sqft	Counted as living area
1	Porch	7'7" x 23'5"	177 sq. ft	No
2	Foyer	11'6" x 18'9"	215 sq. ft	Yes
3	Kitchen	13'1" x 20'2"	264 sq. ft	Yes
4	Bedroom	13'2" x 11'6"	151 sq. ft	Yes
5	Dining Area	13'1" x 16'1"	211 sq. ft	Yes
6	Breakfast Nook	11'2" x 20'2"	225 sq. ft	Yes
7	W.I.C.	5'2" x 4'11"	26 sq. ft	Yes
8	Living Room	19'0" x 16'9"	318 sq. ft	Yes
9	Family Room	20'6" x 16'1"	331 sq. ft	Yes
10	Garage	20'4" x 25'7"	519 sq. ft	No
11	Porch	30'5" x 6'4"	192 sq. ft	No

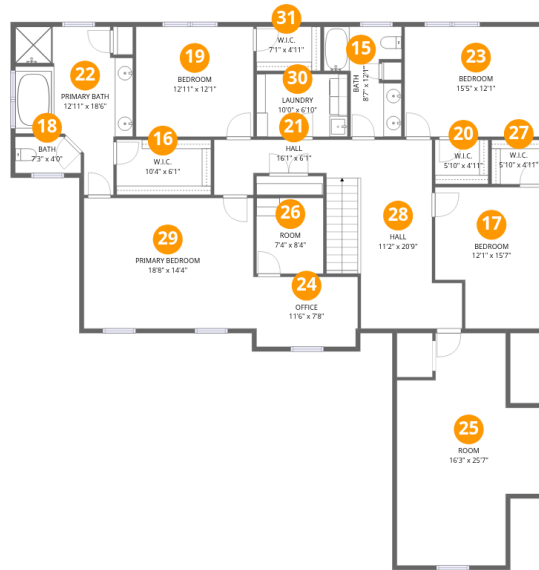
Home data report

705 Treys Dr, Winchester, VA, US

#		Dimensions	sqft	Counted as living area
12	Deck	23'0" x 11'10"	271 sq. ft	No
13	Hall	6'9" x 16'9"	113 sq. ft	Yes
14	Bath	7'8" x 4'11"	38 sq. ft	Yes

Home data report

705 Treys Dr, Winchester, VA, US



Room dimensions

Floor 2

Total: 2109 sqft

Excluded: 69 sqft

#		Dimensions	sqft	Counted as living area
15	Bath	8'7" x 12'1"	104 sq. ft	Yes
16	W.I.C.	10'4" x 6'1"	63 sq. ft	Yes
17	Bedroom	12'1" x 15'7"	188 sq. ft	Yes
18	Bath	7'3" x 4'0"	29 sq. ft	Yes
19	Bedroom	12'11" x 12'1"	156 sq. ft	Yes
20	W.I.C.	5'10" x 4'11"	29 sq. ft	Yes
21	Hall	16'1" x 6'1"	98 sq. ft	Yes
22	Primary Bath	12'11" x 18'6"	240 sq. ft	Yes
23	Bedroom	15'5" x 12'1"	187 sq. ft	Yes
24	Office	11'6" x 7'8"	88 sq. ft	Yes
25	Room	16'3" x 25'7"	416 sq. ft	Yes

Home data report

705 Treys Dr, Winchester, VA, US

#		Dimensions	sqft	Counted as living area
26	Room	7'4" x 8'4"	61 sq. ft	Yes
27	W.I.C.	5'10" x 4'11"	29 sq. ft	Yes
28	Hall	11'2" x 20'9"	231 sq. ft	Yes
29	Primary Bedroom	18'8" x 14'4"	268 sq. ft	Yes
30	Laundry	10'0" x 6'10"	69 sq. ft	Yes
31	W.I.C.	7'1" x 4'11"	34 sq. ft	Yes

1 Floor 1 - Porch



Dimensions: 7'7" x 23'5"
Area: 177 sq. ft
Counted as living area: No

Heated: No
Finished: No
Enclosed: No
Contiguous: Yes
Permitted: Yes
Wet space: No
Addition: No
Conversion: No

2 Floor 1 - Foyer



Dimensions: 11'6" x 18'9"
Area: 215 sq. ft
Counted as living area: Yes

Heated: Yes
Finished: Yes
Enclosed: Yes
Contiguous: Yes
Permitted: Yes
Wet space: No
Addition: No
Conversion: No

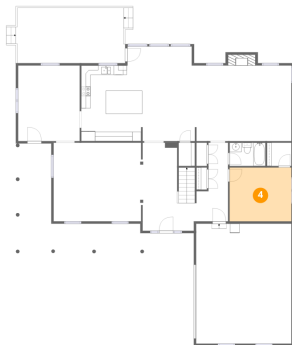
3 Floor 1 - Kitchen



Dimensions: 13'1" x 20'2"
Area: 264 sq. ft
Counted as living area: Yes

Heated: Yes
Finished: Yes
Enclosed: Yes
Contiguous: Yes
Permitted: Yes
Wet space: No
Addition: No
Conversion: No

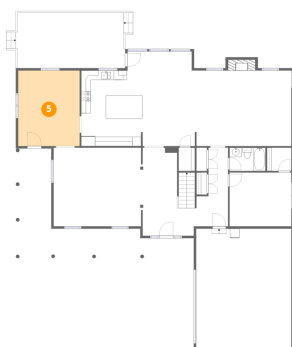
4 Floor 1 - Bedroom



Dimensions: 13'2" x 11'6"
Area: 151 sq. ft
Counted as living area: Yes

Heated: Yes
Finished: Yes
Enclosed: Yes
Contiguous: Yes
Permitted: Yes
Wet space: No
Addition: No
Conversion: No

5 Floor 1 - Dining Area



Dimensions: 13'1" x 16'1"
Area: 211 sq. ft
Counted as living area: Yes

Heated: Yes
Finished: Yes
Enclosed: Yes
Contiguous: Yes
Permitted: Yes
Wet space: No
Addition: No
Conversion: No

6 Floor 1 - Breakfast Nook



Dimensions: 11'2" x 20'2"
Area: 225 sq. ft
Counted as living area: Yes

Heated: Yes
Finished: Yes
Enclosed: Yes
Contiguous: Yes
Permitted: Yes
Wet space: No
Addition: No
Conversion: No

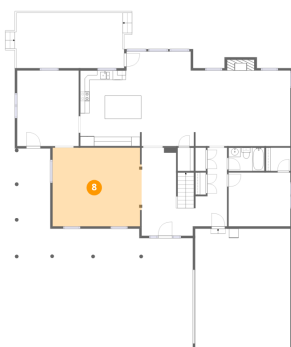
7 Floor 1 - W.I.C.



Dimensions: 5'2" x 4'11"
Area: 26 sq. ft
Counted as living area: Yes

Heated: Yes
Finished: Yes
Enclosed: Yes
Contiguous: Yes
Permitted: Yes
Wet space: No
Addition: No
Conversion: No

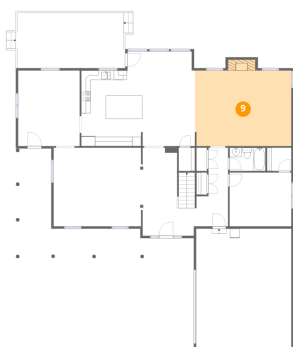
8 Floor 1 - Living Room



Dimensions: 19'0" x 16'9"
Area: 318 sq. ft
Counted as living area: Yes

Heated: Yes
Finished: Yes
Enclosed: Yes
Contiguous: Yes
Permitted: Yes
Wet space: No
Addition: No
Conversion: No

9 Floor 1 - Family Room



Dimensions: 20'6" x 16'1"
Area: 331 sq. ft
Counted as living area: Yes

Heated: Yes
Finished: Yes
Enclosed: Yes
Contiguous: Yes
Permitted: Yes
Wet space: No
Addition: No
Conversion: No

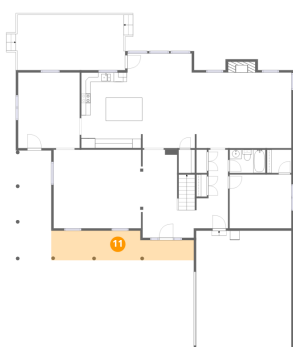
10 Floor 1 - Garage



Dimensions: 20'4" x 25'7"
Area: 519 sq. ft
Counted as living area: No

Heated: No
Finished: No
Enclosed: Yes
Contiguous: Yes
Permitted: Yes
Wet space: No
Addition: No
Conversion: No

11 Floor 1 - Porch



Dimensions: 30'5" x 6'4"
Area: 192 sq. ft
Counted as living area: No

Heated: No
Finished: No
Enclosed: No
Contiguous: Yes
Permitted: Yes
Wet space: No
Addition: No
Conversion: No

12 Floor 1 - Deck



Dimensions: 23'0" x 11'10"
Area: 271 sq. ft
Counted as living area: No

Heated: No
Finished: No
Enclosed: No
Contiguous: Yes
Permitted: Yes
Wet space: No
Addition: No
Conversion: No

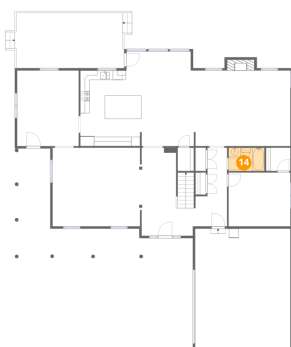
13 Floor 1 - Hall



Dimensions: 6'9" x 16'9"
Area: 113 sq. ft
Counted as living area: Yes

Heated: Yes
Finished: Yes
Enclosed: Yes
Contiguous: Yes
Permitted: Yes
Wet space: No
Addition: No
Conversion: No

14 Floor 1 - Bath



Dimensions: 7'8" x 4'11"
Area: 38 sq. ft
Counted as living area: Yes

Heated: Yes
Finished: Yes
Enclosed: Yes
Contiguous: Yes
Permitted: Yes
Wet space: Yes
Addition: No
Conversion: No

15 Floor 2 - Bath



Dimensions: 8'7" x 12'1"
Area: 104 sq. ft
Counted as living area: Yes

Heated: Yes
Finished: Yes
Enclosed: Yes
Contiguous: Yes
Permitted: Yes
Wet space: Yes
Addition: No
Conversion: No

16 Floor 2 - W.I.C.



Dimensions: 10'4" x 6'1"
Area: 63 sq. ft
Counted as living area: Yes

Heated: Yes
Finished: Yes
Enclosed: Yes
Contiguous: Yes
Permitted: Yes
Wet space: No
Addition: No
Conversion: No

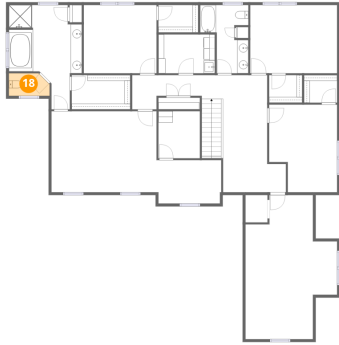
17 Floor 2 - Bedroom



Dimensions: 12'1" x 15'7"
Area: 188 sq. ft
Counted as living area: Yes

Heated: Yes
Finished: Yes
Enclosed: Yes
Contiguous: Yes
Permitted: Yes
Wet space: No
Addition: No
Conversion: No

18 Floor 2 - Bath



Dimensions: 7'3" x 4'0"
Area: 29 sq. ft
Counted as living area: Yes

Heated: Yes
Finished: Yes
Enclosed: Yes
Contiguous: Yes
Permitted: Yes
Wet space: Yes
Addition: No
Conversion: No

19 Floor 2 - Bedroom



Dimensions: 12'11" x 12'1"
Area: 156 sq. ft
Counted as living area: Yes

Heated: Yes
Finished: Yes
Enclosed: Yes
Contiguous: Yes
Permitted: Yes
Wet space: No
Addition: No
Conversion: No

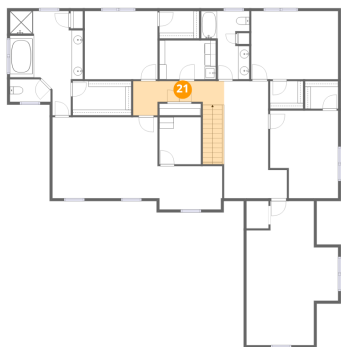
20 Floor 2 - W.I.C.



Dimensions: 5'10" x 4'11"
Area: 29 sq. ft
Counted as living area: Yes

Heated: Yes
Finished: Yes
Enclosed: Yes
Contiguous: Yes
Permitted: Yes
Wet space: No
Addition: No
Conversion: No

21 Floor 2 - Hall



Dimensions: 16'1" x 6'1"
Area: 98 sq. ft
Counted as living area: Yes

Heated: Yes
Finished: Yes
Enclosed: Yes
Contiguous: Yes
Permitted: Yes
Wet space: No
Addition: No
Conversion: No

22 Floor 2 - Primary Bath



Dimensions: 12'11" x 18'6"
Area: 240 sq. ft
Counted as living area: Yes

Heated: Yes
Finished: Yes
Enclosed: Yes
Contiguous: Yes
Permitted: Yes
Wet space: Yes
Addition: No
Conversion: No

23 Floor 2 - Bedroom



Dimensions: 15'5" x 12'1"
Area: 187 sq. ft
Counted as living area: Yes

Heated: Yes
Finished: Yes
Enclosed: Yes
Contiguous: Yes
Permitted: Yes
Wet space: No
Addition: No
Conversion: No

24 Floor 2 - Office



Dimensions: 11'6" x 7'8"
Area: 88 sq. ft
Counted as living area: Yes

Heated: Yes
Finished: Yes
Enclosed: Yes
Contiguous: Yes
Permitted: Yes
Wet space: No
Addition: No
Conversion: No

25 Floor 2 - Room



Dimensions: 16'3" x 25'7"
Area: 416 sq. ft
Counted as living area: Yes

Heated: Yes
Finished: Yes
Enclosed: Yes
Contiguous: Yes
Permitted: Yes
Wet space: No
Addition: No
Conversion: No

26 Floor 2 - Room



Dimensions: 7'4" x 8'4"
Area: 61 sq. ft
Counted as living area: Yes

Heated: Yes
Finished: Yes
Enclosed: Yes
Contiguous: Yes
Permitted: Yes
Wet space: No
Addition: No
Conversion: No

27 Floor 2 - W.I.C.



Dimensions: 5'10" x 4'11"
Area: 29 sq. ft
Counted as living area: Yes

Heated: Yes
Finished: Yes
Enclosed: Yes
Contiguous: Yes
Permitted: Yes
Wet space: No
Addition: No
Conversion: No

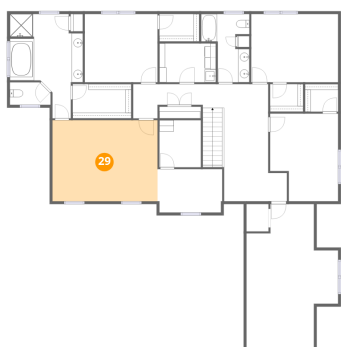
28 Floor 2 - Hall



Dimensions: 11'2" x 20'9"
Area: 231 sq. ft
Counted as living area: Yes

Heated: Yes
Finished: Yes
Enclosed: Yes
Contiguous: Yes
Permitted: Yes
Wet space: No
Addition: No
Conversion: No

29 Floor 2 - Primary Bedroom



Dimensions: 18'8" x 14'4"
Area: 268 sq. ft
Counted as living area: Yes

Heated: Yes
Finished: Yes
Enclosed: Yes
Contiguous: Yes
Permitted: Yes
Wet space: No
Addition: No
Conversion: No

30 Floor 2 - Laundry



Dimensions: 10'0" x 6'10"
Area: 69 sq. ft
Counted as living area: Yes

Heated: Yes
Finished: Yes
Enclosed: Yes
Contiguous: Yes
Permitted: Yes
Wet space: No
Addition: No
Conversion: No

31 Floor 2 - W.I.C.



Dimensions: 7'1" x 4'11"
Area: 34 sq. ft
Counted as living area: Yes

Heated: Yes
Finished: Yes
Enclosed: Yes
Contiguous: Yes
Permitted: Yes
Wet space: No
Addition: No
Conversion: No