

# 11901 Parkview Trace Dr,Louisville,KY,US

Gross Living Area: 2335 sq. ft

## Level 1



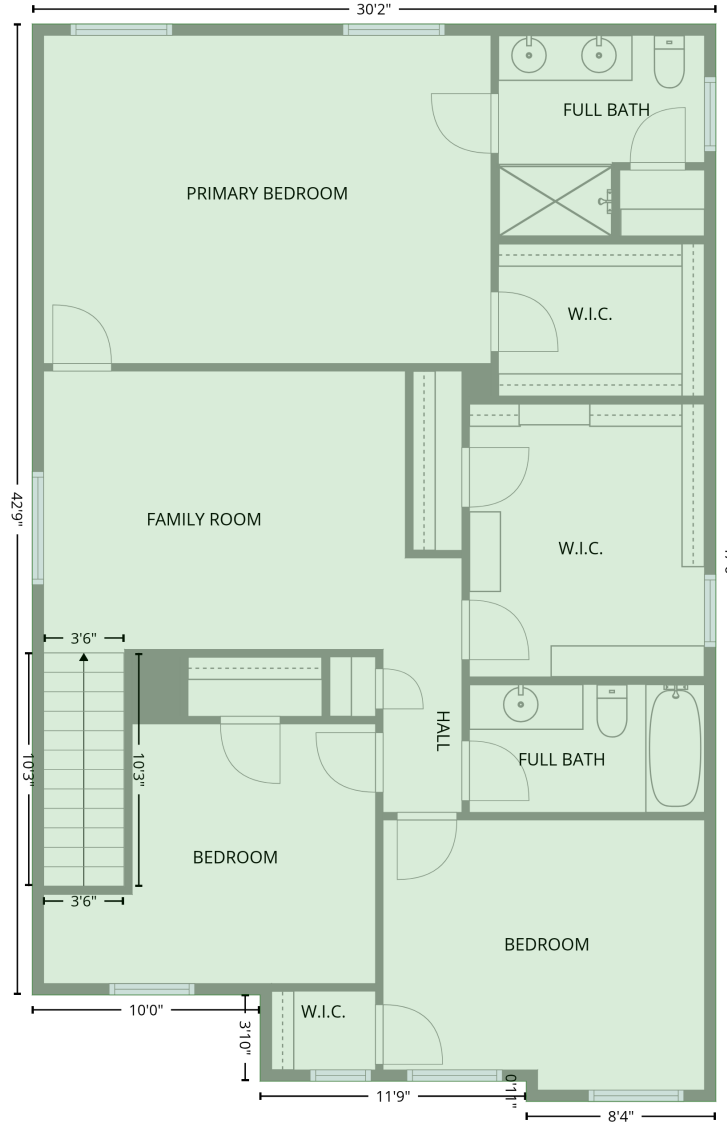
Space	Area (sq. ft)	Calculation <small>Coordinate Polygon Area Algorithm using inches</small>
1st floor (Living area)	962	$-((378.3 + 378.3) * (55.4 - 368.9) + (378.3 + 143.3) * (368.9 - 368.9) + (143.3 + 143.3) * (368.9 - 562.9) + (143.3 + 137.3) * (562.9 - 562.9) + (137.3 + 137.3) * (562.9 - 568.9) + (137.3 + 16.8) * (568.9 - 568.9) + (16.8 + 16.8) * (568.9 - 55.4) + (16.8 + 378.3) * (55.4 - 55.4)) * 0.5 * 0.00694$
GARAGE (Non-living area)	403	$-((378.3 + 378.3) * (368.9 - 614.6) + (378.3 + 137.3) * (614.6 - 614.6) + (137.3 + 137.3) * (614.6 - 562.9) + (137.3 + 143.3) * (562.9 - 562.9) + (143.3 + 143.3) * (562.9 - 368.9) + (143.3 + 378.3) * (368.9 - 368.9)) * 0.5 * 0.00694$

# 11901 Parkview Trace Dr, Louisville, KY, US

Gross Living Area: 2335 sq. ft

## Level 2

2nd floor  
[AREA: 1373]



Space	Area (sq. ft)	Calculation
2nd floor (Living area)	1373	Coordinate Polygon Area Algorithm using inches $-((378.3 + 378.3) * (55.4 - 625.2) + (378.3 + 278.1) * (625.2 - 625.2) + (278.1 + 278.1) * (625.2 - 614.6) + (278.1 + 137.3) * (614.6 - 614.6) + (137.3 + 137.3) * (614.6 - 568.9) + (137.3 + 16.8) * (568.9 - 568.9) + (16.8 + 16.8) * (568.9 - 55.4) + (16.8 + 378.3) * (55.4 - 55.4)) * 0.5 * 0.00694$