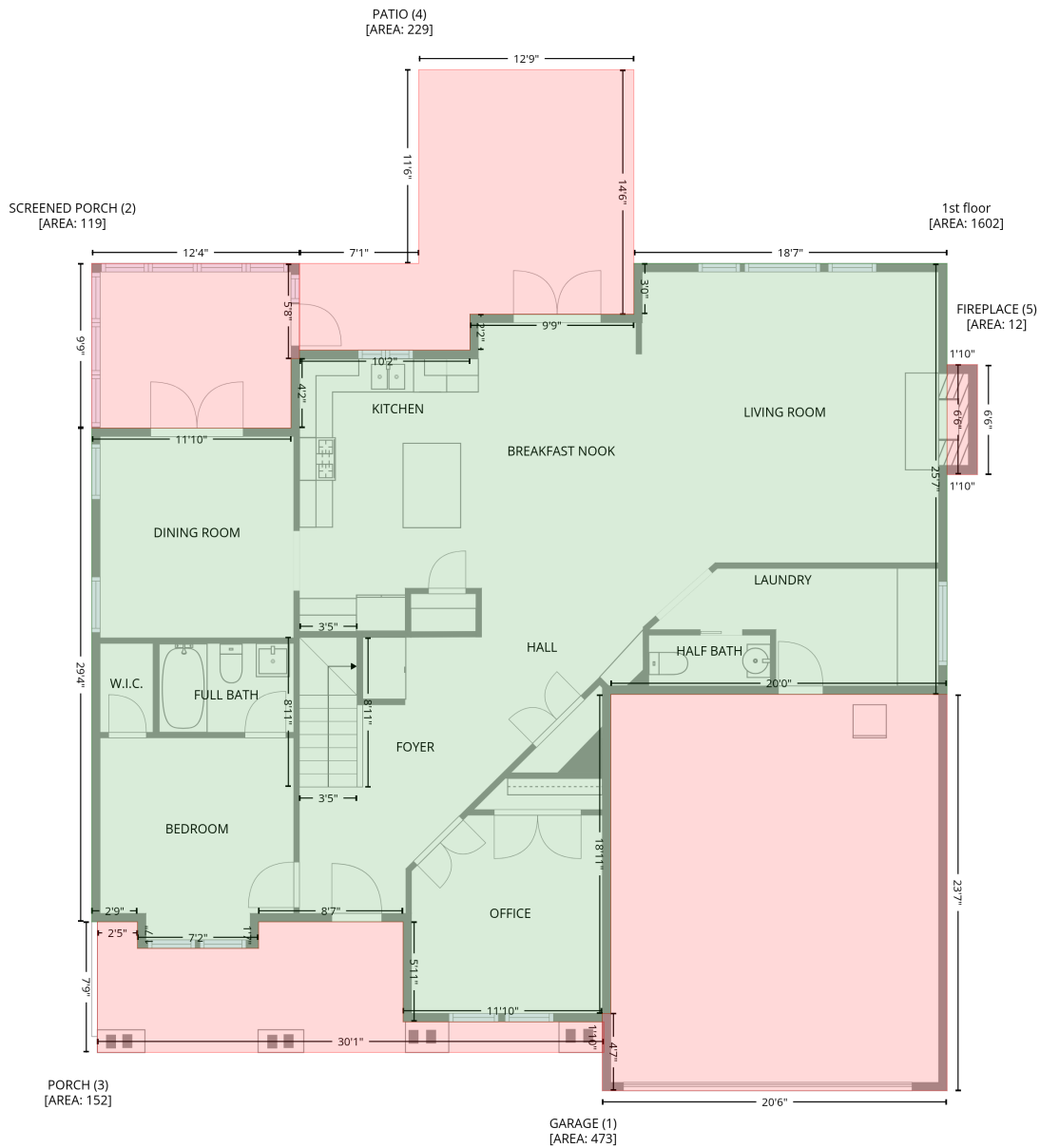


916 Essex Street, NoDa, Charlotte, Mecklenburg County, North Carolina, United States, 28205

Gross Living Area: 3519 sq. ft

Level 1



Space	Area (sq. ft)	Calculation
1st floor (Living area)	1602	Coordinate Polygon Area Algorithm using inches $-((614.1 + 614.1) * (48.8 - 356) + (614.1 + 374.4) * (356 - 356) + (374.4 + 374.4) * (356 - 583.4) + (374.4 + 368.4) * (583.4 - 583.4) + (368.4 + 368.4) * (583.4 - 589.4) + (368.4 + 226.2) * (589.4 - 589.4) + (226.2 + 226.2) * (589.4 - 518.2) + (226.2 + 123.2) * (518.2 - 518.2) + (123.2 + 123.2) * (518.2 - 537.1) + (123.2 + 36.9) * (537.1 - 537.1) + (36.9 + 36.9) * (537.1 - 518.2) + (36.9 + 4.2) * (518.2 - 518.2) + (4.2 + 4.2) * (518.2 - 166.1) + (4.2 + 146.3) * (166.1 - 166.1) + (146.3 + 146.3) * (166.1 - 116.6) + (146.3 + 152.3) * (116.6 - 116.6) + (152.3 + 152.3) * (116.6 - 110.6) + (152.3 + 273.9) * (110.6 - 110.6) + (273.9 + 273.9) * (110.6 - 85) + (273.9 + 390.8) * (85 - 85) + (390.8 + 390.8) * (85 - 48.8) + (390.8 + 614.1) * (48.8 - 48.8)) * 0.5 * 0.00694$

916 Essex Street, NoDa, Charlotte, Mecklenburg County, North Carolina, United States, 28205

Gross Living Area: 3519 sq. ft

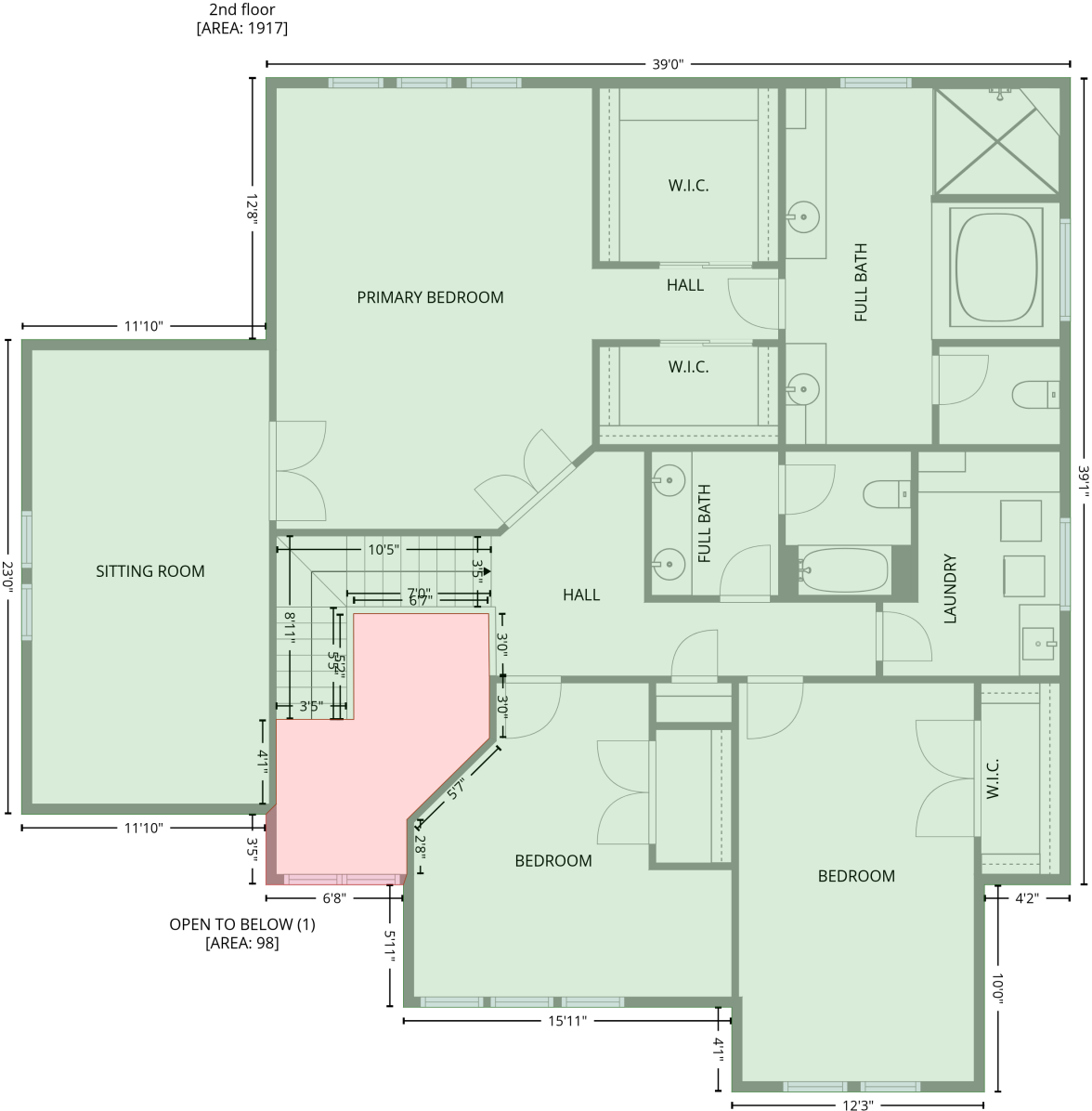
Level 1

Space	Area (sq. ft)	Calculation <small>Coordinate Polygon Area Algorithm using inches</small>
GARAGE (Non-living area)	473	$-((614.1 + 614.1) * (356 - 638.6) + (614.1 + 368.4) * (638.6 - 638.6) + (368.4 + 368.4) * (638.6 - 583.4) + (368.4 + 374.4) * (583.4 - 583.4) + (374.4 + 374.4) * (583.4 - 356) + (374.4 + 614.1) * (356 - 356)) * 0.5 * 0.00694$
SCREENED PORCH (Non-living area)	119	$-((4.2 + 152.3) * (48.8 - 48.8) + (152.3 + 152.3) * (48.8 - 116.6) + (152.3 + 146.3) * (116.6 - 116.6) + (146.3 + 146.3) * (116.6 - 166.1) + (146.3 + 4.2) * (166.1 - 166.1) + (4.2 + 4.2) * (166.1 - 48.8)) * 0.5 * 0.00694$
PORCH (Non-living area)	152	$-((36.9 + 36.9) * (518.2 - 537.1) + (36.9 + 123.2) * (537.1 - 537.1) + (123.2 + 123.2) * (537.1 - 518.2) + (123.2 + 226.2) * (518.2 - 518.2) + (226.2 + 226.2) * (518.2 - 589.4) + (226.2 + 369.4) * (589.4 - 589.4) + (369.4 + 369.4) * (589.4 - 611.3) + (369.4 + 8.2) * (611.3 - 611.3) + (8.2 + 8.2) * (611.3 - 518.2) + (8.2 + 36.9) * (518.2 - 518.2)) * 0.5 * 0.00694$
PATIO (Non-living area)	229	$-((390.8 + 390.8) * (-89.5 - 85) + (390.8 + 273.9) * (85 - 85) + (273.9 + 273.9) * (85 - 110.6) + (273.9 + 152.4) * (110.6 - 110.6) + (152.4 + 152.4) * (110.6 - 48.8) + (152.4 + 237.4) * (48.8 - 48.8) + (237.4 + 237.4) * (48.8 - -89.5) + (237.4 + 390.8) * (-89.5 - -89.5)) * 0.5 * 0.00694$
FIREPLACE (Non-living area)	12	$-((635.8 + 635.8) * (120.9 - 199.3) + (635.8 + 614.1) * (199.3 - 199.3) + (614.1 + 614.1) * (199.3 - 120.9) + (614.1 + 635.8) * (120.9 - 120.9)) * 0.5 * 0.00694$

916 Essex Street, NoDa, Charlotte, Mecklenburg County, North Carolina, United States, 28205

Gross Living Area: 3519 sq. ft

Level 2



916 Essex Street, NoDa, Charlotte, Mecklenburg County, North Carolina, United States, 28205

Gross Living Area: 3519 sq. ft

Level 2

Space	Area (sq. ft)	Calculation <small>Coordinate Polygon Area Algorithm using inches</small>
2nd floor (Living area)	1917	$ \begin{aligned} & -((616.1 + 616.1) * (48.8 - 518.2) + (616.1 + 566.1) * (518.2 - 518.2) + (566.1 + 566.1) * (518.2 - 638.6) + (566.1 + 419.1) * (638.6 - 638.6) + (419.1 + 419.1) * (638.6 - 589.4) + (419.1 + 228.2) * (589.4 - 589.4) + (228.2 + 228.2) * (589.4 - 518.2) + (228.2 + 230.2) * (518.2 - 512.2) + (230.2 + 230.2) * (512.2 - 480.3) + (230.2 + 278.2) * (480.3 - 432.9) + (278.2 + 278.2) * (432.9 - 396.8) + (278.2 + 277.8) * (396.8 - 360.5) + (277.8 + 199.2) * (360.5 - 360.5) + (199.2 + 199.3) * (360.5 - 422) + (199.3 + 154.2) * (422 - 422) + (154.2 + 154.2) * (422 - 471.2) + (154.2 + 154.3) * (471.2 - 471.2) + (154.3 + 148.3) * (471.2 - 477.2) + (148.3 + 6.1) * (477.2 - 477.2) + (6.1 + 6.1) * (477.2 - 201.1) + (6.1 + 148.3) * (201.1 - 201.1) + (148.3 + 148.3) * (201.1 - 48.8) + (148.3 + 616.1) * (48.8 - 48.8)) * 0.5 * 0.00694 \end{aligned} $
OPEN TO BELOW (Non-living area)	98	$ \begin{aligned} & -((277.8 + 278.2) * (360.5 - 396.8) + (278.2 + 278.2) * (396.8 - 432.9) + (278.2 + 230.2) * (432.9 - 480.3) + (230.2 + 230.2) * (480.3 - 512.2) + (230.2 + 228.2) * (512.2 - 518.2) + (228.2 + 148.3) * (518.2 - 518.2) + (148.3 + 148.3) * (518.2 - 477.2) + (148.3 + 154.3) * (477.2 - 471.2) + (154.3 + 154.2) * (471.2 - 422) + (154.2 + 199.3) * (422 - 422) + (199.3 + 199.2) * (422 - 360.5) + (199.2 + 277.8) * (360.5 - 360.5)) * 0.5 * 0.00694 \end{aligned} $