

Home data report

934 Commander Drive Northwest, Captains Grove, Hollins,
Roanoke, Roanoke County, Virginia, United States, 24012, Upper



Total Area: 3672 sq. ft

1st Floor: 2551 sq. ft, 2nd Floor: 1121 sq. ft

Excluded: Open to below 82 sq. ft, Stairwell 134 sq. ft, Primary bedroom 589 sq. ft, Fireplace 22 sq. ft, Low ceiling 71 sq. ft, Walls: 246 sq. ft

Property summary

 **2** Floors

 **4** Bedrooms

 **3** Bathrooms

 **1** Half baths

Home data report

934 Commander Drive Northwest, Captains Grove, Hollins,
Roanoke, Roanoke County, Virginia, United States, 24012, Upper



Room dimensions

Floor 1 Total:2551sqft Excluded: 779sqft

#		Dimensions	sqft	Counted as living area
1	W.I.C.	18'9" x 6'2"	115 sq. ft	Yes
2	Bath	13'2" x 8'5"	93 sq. ft	Yes
3	Bedroom	18'9" x 14'7"	274 sq. ft	Yes
4	Sitting Room	18'9" x 11'5"	221 sq. ft	Yes
5	Primary Bedroom	19'11" x 29'8"	593 sq. ft	No
6	Hall	11'6" x 11'10"	106 sq. ft	Yes
7	Bedroom	18'9" x 10'7"	198 sq. ft	Yes
8	Stairwell	4'4" x 0'0"	132 sq. ft	No
9	Hall	11'4" x 22'11"	242 sq. ft	Yes
10	Open To Below	3'9" x 9'4"	34 sq. ft	No
11	Hall	18'9" x 4'2"	78 sq. ft	Yes

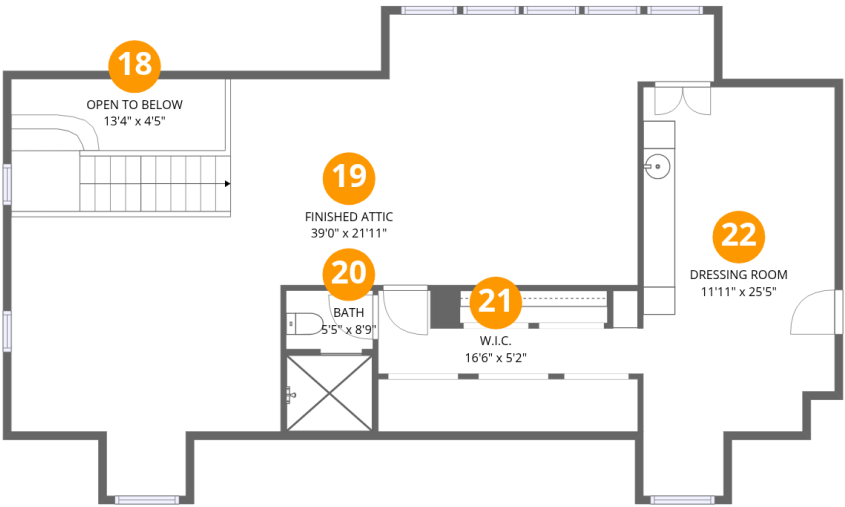
Home data report

**934 Commander Drive Northwest, Captains Grove, Hollins,
Roanoke, Roanoke County, Virginia, United States, 24012, Upper**

#		Dimensions	sqft	Counted as living area
12	W.I.C.	5'1" x 5'5"	27 sq. ft	Yes
13	Bath	8'11" x 7'1"	64 sq. ft	Yes
14	Bath	17'4" x 19'6"	284 sq. ft	Yes
15	Hall	18'9" x 4'2"	78 sq. ft	Yes
16	Bedroom	18'10" x 19'4"	376 sq. ft	Yes
17	Hall	13'2" x 13'1"	114 sq. ft	Yes

Home data report

934 Commander Drive Northwest, Captains Grove, Hollins,
Roanoke, Roanoke County, Virginia, United States, 24012, Upper



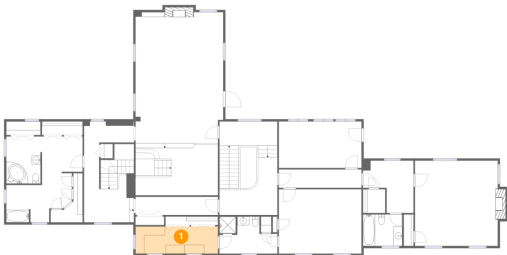
Room dimensions

Floor 2 Total:1121sqft Excluded: 119sqft

#		Dimensions	sqft	Counted as living area
18	Open To Below	13'4" x 4'5"	48 sq. ft	No
19	Finished Attic	39'0" x 21'11"	677 sq. ft	Yes
20	Bath	5'5" x 8'9"	40 sq. ft	Yes
21	W.I.C.	16'6" x 5'2"	58 sq. ft	Yes
22	Dressing Room	11'11" x 25'5"	257 sq. ft	Yes

934 Commander Drive Northwest, Captains Grove, Hollins,
Roanoke, Roanoke County, Virginia, United States, 24012, Upper

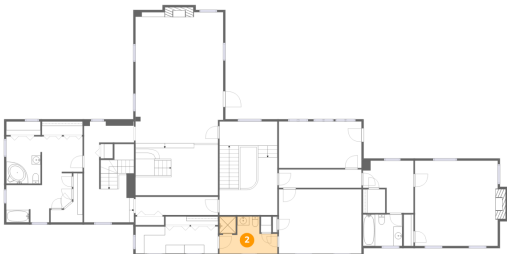
1 Floor 1 - W.I.C.



Dimensions: 18'9" x 6'2"
Area: 115 sq. ft
Counted as living area: Yes

Heated: Yes
Finished: Yes
Enclosed: Yes
Contiguous: Yes
Permitted: Yes
Wet space: No
Addition: No
Conversion: No

2 Floor 1 - Bath

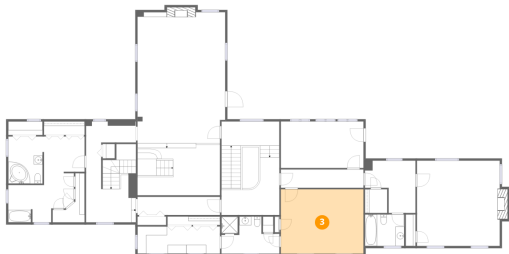


Dimensions: 13'2" x 8'5"
Area: 93 sq. ft
Counted as living area: Yes

Heated: Yes
Finished: Yes
Enclosed: Yes
Contiguous: Yes
Permitted: Yes
Wet space: Yes
Addition: No
Conversion: No

934 Commander Drive Northwest, Captains Grove, Hollins,
Roanoke, Roanoke County, Virginia, United States, 24012, Upper

3 Floor 1 - Bedroom



Dimensions: 18'9" x 14'7"
Area: 274 sq. ft
Counted as living area: Yes

Heated: Yes
Finished: Yes
Enclosed: Yes
Contiguous: Yes
Permitted: Yes
Wet space: No
Addition: No
Conversion: No

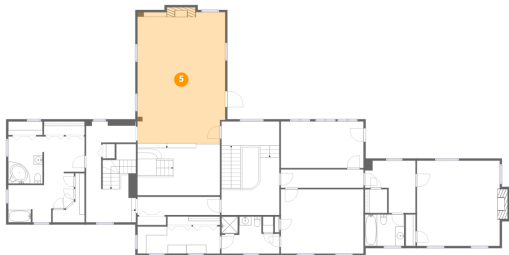
4 Floor 1 - Sitting Room



Dimensions: 18'9" x 11'5"
Area: 221 sq. ft
Counted as living area: Yes

Heated: Yes
Finished: Yes
Enclosed: Yes
Contiguous: Yes
Permitted: Yes
Wet space: No
Addition: No
Conversion: No

5 Floor 1 - Primary Bedroom



Dimensions: 19'11" x 29'8"
Area: 593 sq. ft
Counted as living area: No

Heated: Yes
Finished: No
Enclosed: Yes
Contiguous: Yes
Permitted: Yes
Wet space: No
Addition: No
Conversion: No

Home data report

**934 Commander Drive Northwest, Captains Grove, Hollins,
Roanoke, Roanoke County, Virginia, United States, 24012, Upper**

6 Floor 1 - Hall



Dimensions: 11'6" x 11'10"
Area: 106 sq. ft
Counted as living area: Yes

Heated: Yes
Finished: Yes
Enclosed: Yes
Contiguous: Yes
Permitted: Yes
Wet space: No
Addition: No
Conversion: No

7 Floor 1 - Bedroom



Dimensions: 18'9" x 10'7"
Area: 198 sq. ft
Counted as living area: Yes

Heated: Yes
Finished: Yes
Enclosed: Yes
Contiguous: Yes
Permitted: Yes
Wet space: No
Addition: No
Conversion: No

8 Floor 1 - Stairwell

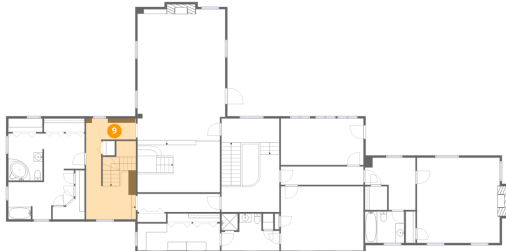


Dimensions: 4'4" x 0'0"
Area: 132 sq. ft
Counted as living area: No

Heated: No
Finished: No
Enclosed: No
Contiguous: Yes
Permitted: No
Wet space: No
Addition: No
Conversion: No

934 Commander Drive Northwest, Captains Grove, Hollins,
Roanoke, Roanoke County, Virginia, United States, 24012, Upper

9 Floor 1 - Hall



Dimensions: 11'4" x 22'11"
Area: 242 sq. ft
Counted as living area: Yes

Heated: Yes
Finished: Yes
Enclosed: Yes
Contiguous: Yes
Permitted: Yes
Wet space: No
Addition: No
Conversion: No

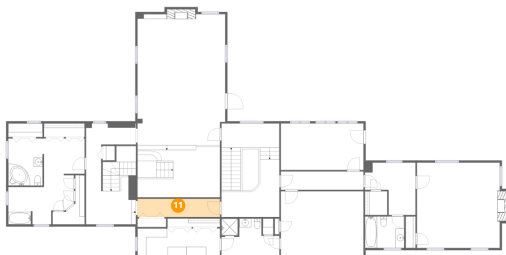
10 Floor 1 - Open To Below



Dimensions: 3'9" x 9'4"
Area: 34 sq. ft
Counted as living area: No

Heated: No
Finished: No
Enclosed: No
Contiguous: Yes
Permitted: No
Wet space: No
Addition: No
Conversion: No

11 Floor 1 - Hall



Dimensions: 18'9" x 4'2"
Area: 78 sq. ft
Counted as living area: Yes

Heated: Yes
Finished: Yes
Enclosed: Yes
Contiguous: Yes
Permitted: Yes
Wet space: No
Addition: No
Conversion: No

Home data report

**934 Commander Drive Northwest, Captains Grove, Hollins,
Roanoke, Roanoke County, Virginia, United States, 24012, Upper**

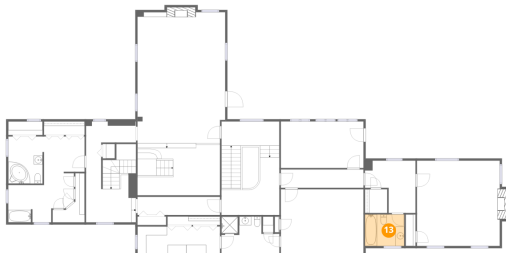
12 Floor 1 - W.I.C.



Dimensions: 5'1" x 5'5"
Area: 27 sq. ft
Counted as living area: Yes

Heated: Yes
Finished: Yes
Enclosed: Yes
Contiguous: Yes
Permitted: Yes
Wet space: No
Addition: No
Conversion: No

13 Floor 1 - Bath



Dimensions: 8'11" x 7'1"
Area: 64 sq. ft
Counted as living area: Yes

Heated: Yes
Finished: Yes
Enclosed: Yes
Contiguous: Yes
Permitted: Yes
Wet space: Yes
Addition: No
Conversion: No

14 Floor 1 - Bath



Dimensions: 17'4" x 19'6"
Area: 284 sq. ft
Counted as living area: Yes

Heated: Yes
Finished: Yes
Enclosed: Yes
Contiguous: Yes
Permitted: Yes
Wet space: Yes
Addition: No
Conversion: No

934 Commander Drive Northwest, Captains Grove, Hollins,
Roanoke, Roanoke County, Virginia, United States, 24012, Upper

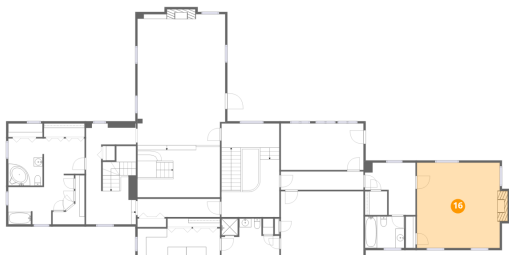
15 Floor 1 - Hall



Dimensions: 18'9" x 4'2"
Area: 78 sq. ft
Counted as living area: Yes

Heated: Yes
Finished: Yes
Enclosed: Yes
Contiguous: Yes
Permitted: Yes
Wet space: No
Addition: No
Conversion: No

16 Floor 1 - Bedroom



Dimensions: 18'10" x 19'4"
Area: 376 sq. ft
Counted as living area: Yes

Heated: Yes
Finished: Yes
Enclosed: Yes
Contiguous: Yes
Permitted: Yes
Wet space: No
Addition: No
Conversion: No

17 Floor 1 - Hall

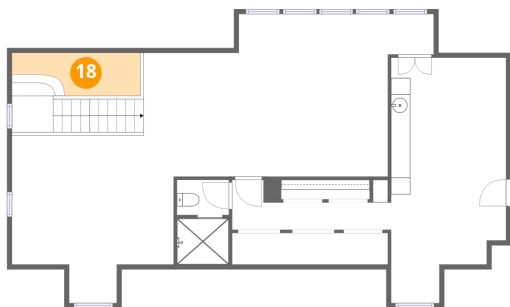


Dimensions: 13'2" x 13'1"
Area: 114 sq. ft
Counted as living area: Yes

Heated: Yes
Finished: Yes
Enclosed: Yes
Contiguous: Yes
Permitted: Yes
Wet space: No
Addition: No
Conversion: No

934 Commander Drive Northwest, Captains Grove, Hollins,
Roanoke, Roanoke County, Virginia, United States, 24012, Upper

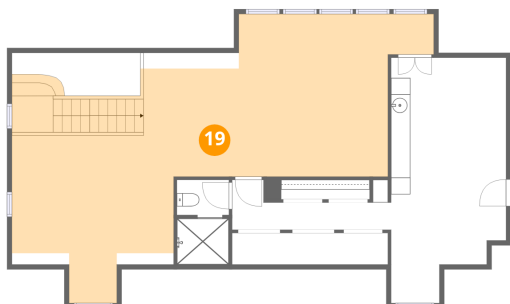
18 Floor 2 - Open To Below



Dimensions: 13'4" x 4'5"
Area: 48 sq. ft
Counted as living area: No

Heated: No
Finished: No
Enclosed: No
Contiguous: Yes
Permitted: No
Wet space: No
Addition: No
Conversion: No

19 Floor 2 - Finished Attic



Dimensions: 39'0" x 21'11"
Area: 677 sq. ft
Counted as living area: Yes

Heated: Yes
Finished: Yes
Enclosed: Yes
Contiguous: Yes
Permitted: Yes
Wet space: No
Addition: No
Conversion: No

20 Floor 2 - Bath



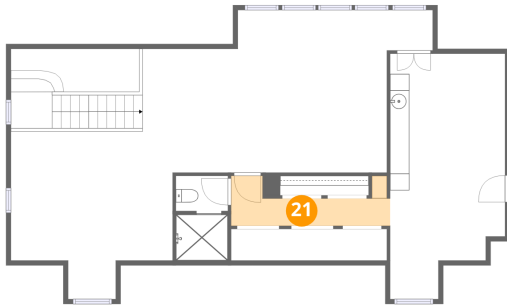
Dimensions: 5'5" x 8'9"
Area: 40 sq. ft
Counted as living area: Yes

Heated: Yes
Finished: Yes
Enclosed: Yes
Contiguous: Yes
Permitted: Yes
Wet space: Yes
Addition: No
Conversion: No

Home data report

934 Commander Drive Northwest, Captains Grove, Hollins,
Roanoke, Roanoke County, Virginia, United States, 24012, Upper

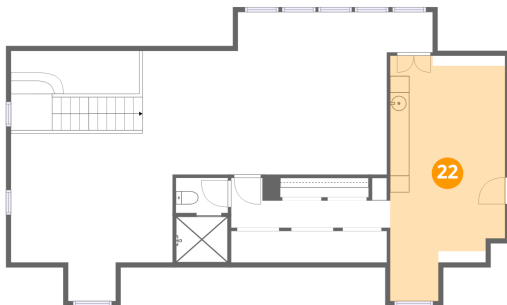
21 Floor 2 - W.I.C.



Dimensions: 16'6" x 5'2"
Area: 58 sq. ft
Counted as living area: Yes

Heated: Yes
Finished: Yes
Enclosed: Yes
Contiguous: Yes
Permitted: Yes
Wet space: No
Addition: No
Conversion: No

22 Floor 2 - Dressing Room



Dimensions: 11'11" x 25'5"
Area: 257 sq. ft
Counted as living area: Yes

Heated: Yes
Finished: Yes
Enclosed: Yes
Contiguous: Yes
Permitted: Yes
Wet space: No
Addition: No
Conversion: No