

Home data report

1612 Glenforest Blvd, Peterborough, ON, CA



Total Area: 2155 sq. ft

Basement: 944 sq. ft, 1st Floor: 1211 sq. ft

Excluded: Utility 89 sq. ft, Storage 178 sq. ft, Garage 345 sq. ft, Deck 154 sq. ft, Walls: 176 sq. ft

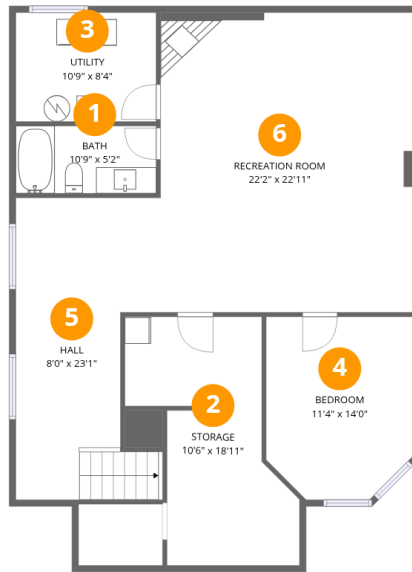
Property summary

 **2** Floors

 **4** Bedrooms

 **3** Bathrooms

 **1** Garages



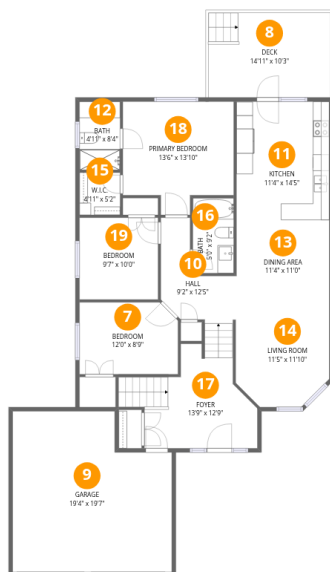
Room dimensions

Floor 1 Below grade

Total:944sqft

Excluded: 267sqft

#		Dimensions	sqft	Counted as living area
1	Bath	10'9" x 5'2"	55 sq. ft	Yes
2	Storage	10'6" x 18'11"	199 sq. ft	No
3	Utility	10'9" x 8'4"	89 sq. ft	No
4	Bedroom	11'4" x 14'0"	158 sq. ft	Yes
5	Hall	8'0" x 23'1"	184 sq. ft	Yes
6	Recreation Room	22'2" x 22'11"	508 sq. ft	Yes



Room dimensions

Floor 2

Total: 1211 sqft Excluded: 499 sqft

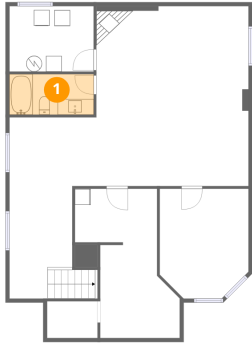
#		Dimensions	sqft	Counted as living area
7	Bedroom	12'0" x 8'9"	105 sq. ft	Yes
8	Deck	14'11" x 10'3"	153 sq. ft	No
9	Garage	19'4" x 19'7"	378 sq. ft	No
10	Hall	9'2" x 12'5"	114 sq. ft	Yes
11	Kitchen	11'4" x 14'5"	163 sq. ft	Yes
12	Bath	4'11" x 8'4"	41 sq. ft	Yes
13	Dining Area	11'4" x 11'0"	124 sq. ft	Yes
14	Living Room	11'5" x 11'10"	135 sq. ft	Yes
15	W.I.C.	4'11" x 5'2"	25 sq. ft	Yes
16	Bath	5'0" x 9'2"	46 sq. ft	Yes
17	Foyer	13'9" x 12'9"	175 sq. ft	Yes

Home data report

1612 Glenforest Blvd, Peterborough, ON, CA

#		Dimensions	sqft	Counted as living area
18	Primary Bedroom	13'6" x 13'10"	187 sq. ft	Yes
19	Bedroom	9'7" x 10'0"	95 sq. ft	Yes

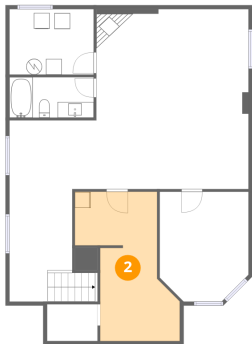
1 Floor 1 - Bath



Dimensions: 10'9" x 5'2"
Area: 55 sq. ft
Counted as living area: Yes

Heated: Yes
Finished: Yes
Enclosed: Yes
Contiguous: Yes
Permitted: Yes
Wet space: Yes
Addition: No
Conversion: No

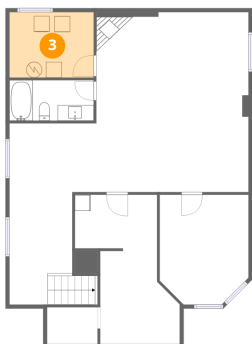
2 Floor 1 - Storage



Dimensions: 10'6" x 18'11"
Area: 199 sq. ft
Counted as living area: No

Heated: No
Finished: No
Enclosed: No
Contiguous: Yes
Permitted: Yes
Wet space: No
Addition: No
Conversion: No

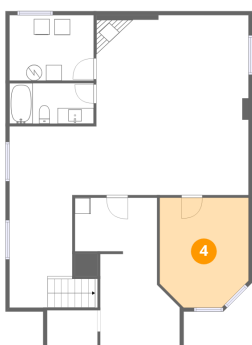
3 Floor 1 - Utility



Dimensions: 10'9" x 8'4"
Area: 89 sq. ft
Counted as living area: No

Heated: Yes
Finished: No
Enclosed: Yes
Contiguous: Yes
Permitted: Yes
Wet space: No
Addition: No
Conversion: No

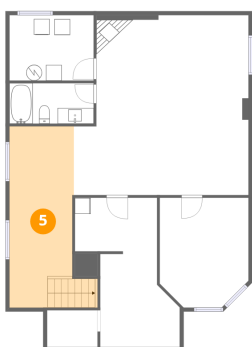
4 Floor 1 - Bedroom



Dimensions: 11'4" x 14'0"
Area: 158 sq. ft
Counted as living area: Yes

Heated: Yes
Finished: Yes
Enclosed: Yes
Contiguous: Yes
Permitted: Yes
Wet space: No
Addition: No
Conversion: No

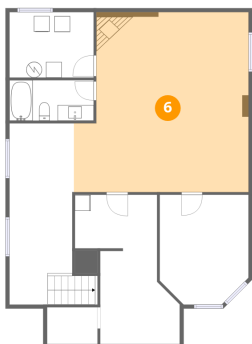
5 Floor 1 - Hall



Dimensions: 8'0" x 23'1"
Area: 184 sq. ft
Counted as living area: Yes

Heated: Yes
Finished: Yes
Enclosed: Yes
Contiguous: Yes
Permitted: Yes
Wet space: No
Addition: No
Conversion: No

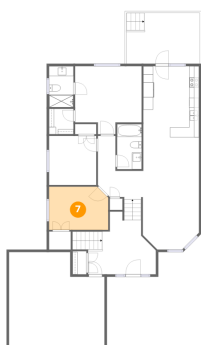
6 Floor 1 - Recreation Room



Dimensions: 22'2" x 22'11"
Area: 508 sq. ft
Counted as living area: Yes

Heated: Yes
Finished: Yes
Enclosed: Yes
Contiguous: Yes
Permitted: Yes
Wet space: No
Addition: No
Conversion: No

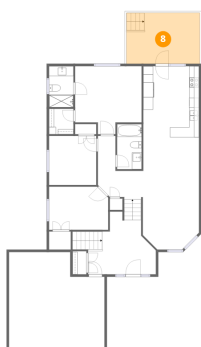
7 Floor 2 - Bedroom



Dimensions: 12'0" x 8'9"
Area: 105 sq. ft
Counted as living area: Yes

Heated: Yes
Finished: Yes
Enclosed: Yes
Contiguous: Yes
Permitted: Yes
Wet space: No
Addition: No
Conversion: No

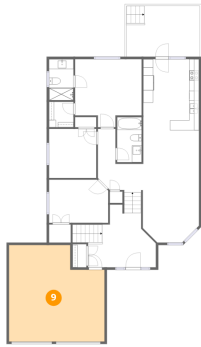
8 Floor 2 - Deck



Dimensions: 14'11" x 10'3"
Area: 153 sq. ft
Counted as living area: No

Heated: No
Finished: No
Enclosed: No
Contiguous: Yes
Permitted: Yes
Wet space: No
Addition: No
Conversion: No

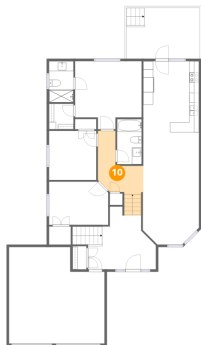
9 Floor 2 - Garage



Dimensions: 19'4" x 19'7"
Area: 378 sq. ft
Counted as living area: No

Heated: No
Finished: No
Enclosed: Yes
Contiguous: Yes
Permitted: Yes
Wet space: No
Addition: No
Conversion: No

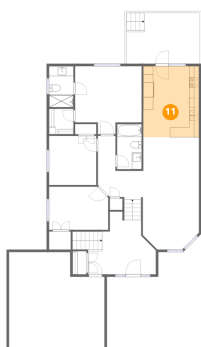
10 Floor 2 - Hall



Dimensions: 9'2" x 12'5"
Area: 114 sq. ft
Counted as living area: Yes

Heated: Yes
Finished: Yes
Enclosed: Yes
Contiguous: Yes
Permitted: Yes
Wet space: No
Addition: No
Conversion: No

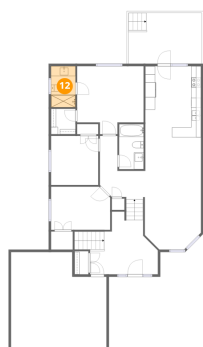
11 Floor 2 - Kitchen



Dimensions: 11'4" x 14'5"
Area: 163 sq. ft
Counted as living area: Yes

Heated: Yes
Finished: Yes
Enclosed: Yes
Contiguous: Yes
Permitted: Yes
Wet space: No
Addition: No
Conversion: No

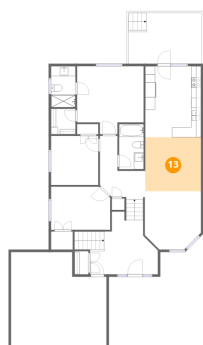
12 Floor 2 - Bath



Dimensions: 4'11" x 8'4"
Area: 41 sq. ft
Counted as living area: Yes

Heated: Yes
Finished: Yes
Enclosed: Yes
Contiguous: Yes
Permitted: Yes
Wet space: Yes
Addition: No
Conversion: No

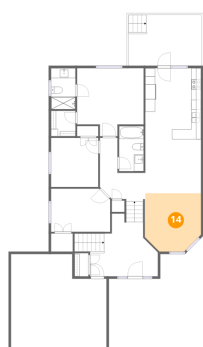
13 Floor 2 - Dining Area



Dimensions: 11'4" x 11'0"
Area: 124 sq. ft
Counted as living area: Yes

Heated: Yes
Finished: Yes
Enclosed: Yes
Contiguous: Yes
Permitted: Yes
Wet space: No
Addition: No
Conversion: No

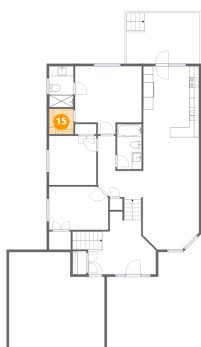
14 Floor 2 - Living Room



Dimensions: 11'5" x 11'10"
Area: 135 sq. ft
Counted as living area: Yes

Heated: Yes
Finished: Yes
Enclosed: Yes
Contiguous: Yes
Permitted: Yes
Wet space: No
Addition: No
Conversion: No

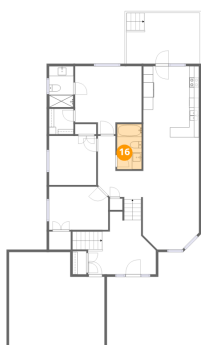
15 Floor 2 - W.I.C.



Dimensions: 4'11" x 5'2"
Area: 25 sq. ft
Counted as living area: Yes

Heated: Yes
Finished: Yes
Enclosed: Yes
Contiguous: Yes
Permitted: Yes
Wet space: No
Addition: No
Conversion: No

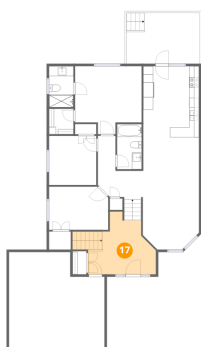
16 Floor 2 - Bath



Dimensions: 5'0" x 9'2"
Area: 46 sq. ft
Counted as living area: Yes

Heated: Yes
Finished: Yes
Enclosed: Yes
Contiguous: Yes
Permitted: Yes
Wet space: Yes
Addition: No
Conversion: No

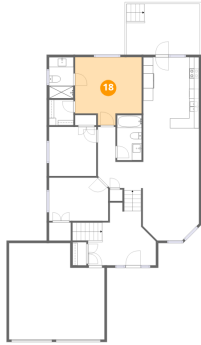
17 Floor 2 - Foyer



Dimensions: 13'9" x 12'9"
Area: 175 sq. ft
Counted as living area: Yes

Heated: Yes
Finished: Yes
Enclosed: Yes
Contiguous: Yes
Permitted: Yes
Wet space: No
Addition: No
Conversion: No

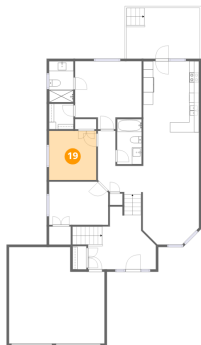
18 Floor 2 - Primary Bedroom



Dimensions: 13'6" x 13'10"
Area: 187 sq. ft
Counted as living area: Yes

Heated: Yes
Finished: Yes
Enclosed: Yes
Contiguous: Yes
Permitted: Yes
Wet space: No
Addition: No
Conversion: No

19 Floor 2 - Bedroom



Dimensions: 9'7" x 10'0"
Area: 95 sq. ft
Counted as living area: Yes

Heated: Yes
Finished: Yes
Enclosed: Yes
Contiguous: Yes
Permitted: Yes
Wet space: No
Addition: No
Conversion: No