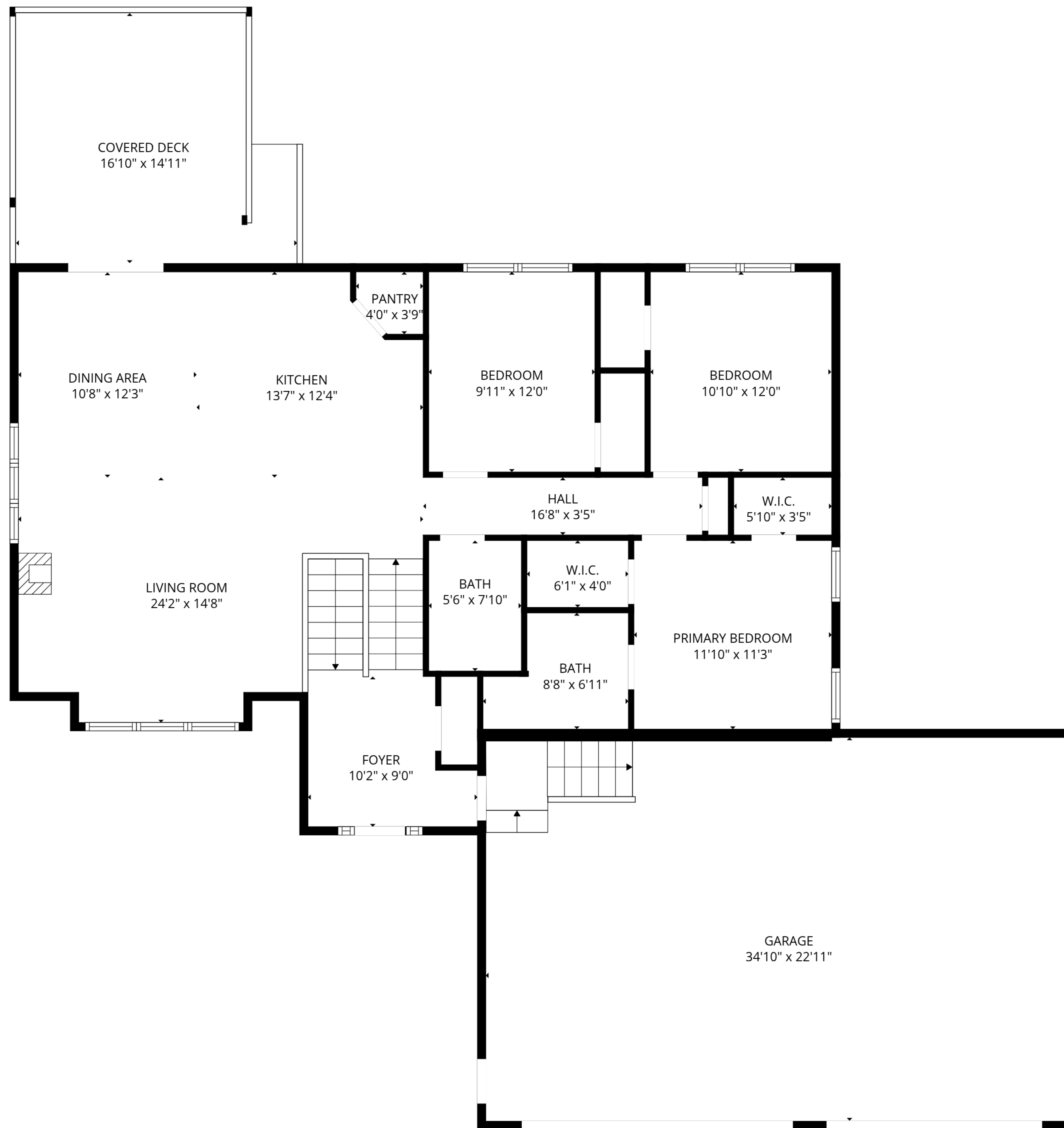


TOTAL: 2579 sq. ft

Basement: 1150 sq. ft, 1st floor: 1369 sq. ft, 2nd floor: 60 sq. ft
 EXCLUDED AREAS: UTILITY: 90 sq. ft, COVERED DECK: 570 sq. ft, STORAGE: 52 sq. ft,
 GARAGE: 800 sq. ft, ATTIC: 434 sq. ft, WALLS: 258 sq. ft

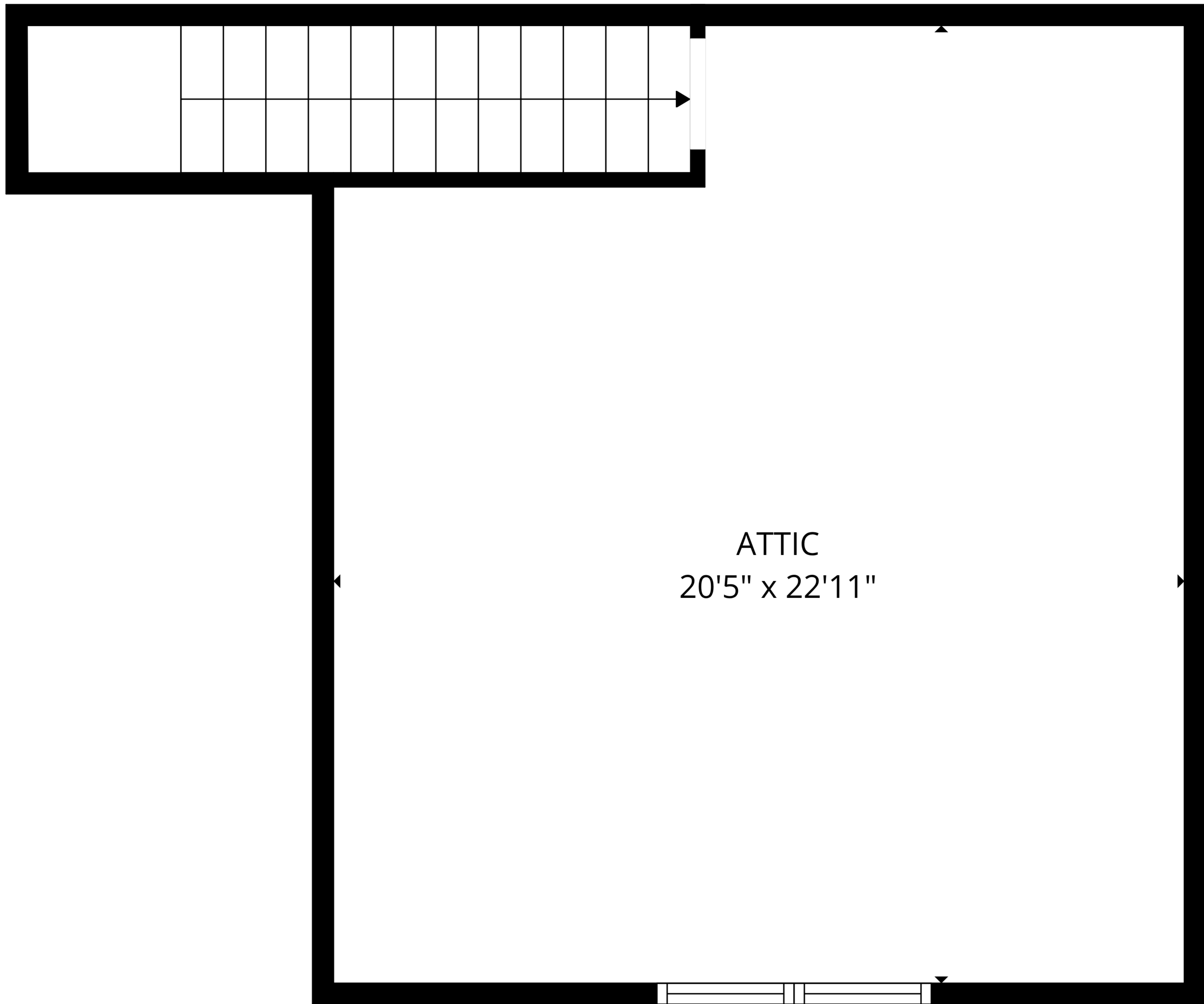
SIZES AND DIMENSIONS ARE APPROXIMATE, ACTUAL MAY VARY.



TOTAL: 2579 sq. ft

Basement: 1150 sq. ft, 1st floor: 1369 sq. ft, 2nd floor: 60 sq. ft
 EXCLUDED AREAS: UTILITY: 90 sq. ft, COVERED DECK: 570 sq. ft, STORAGE: 52 sq. ft,
 GARAGE: 800 sq. ft, ATTIC: 434 sq. ft, WALLS: 258 sq. ft

SIZES AND DIMENSIONS ARE APPROXIMATE, ACTUAL MAY VARY.

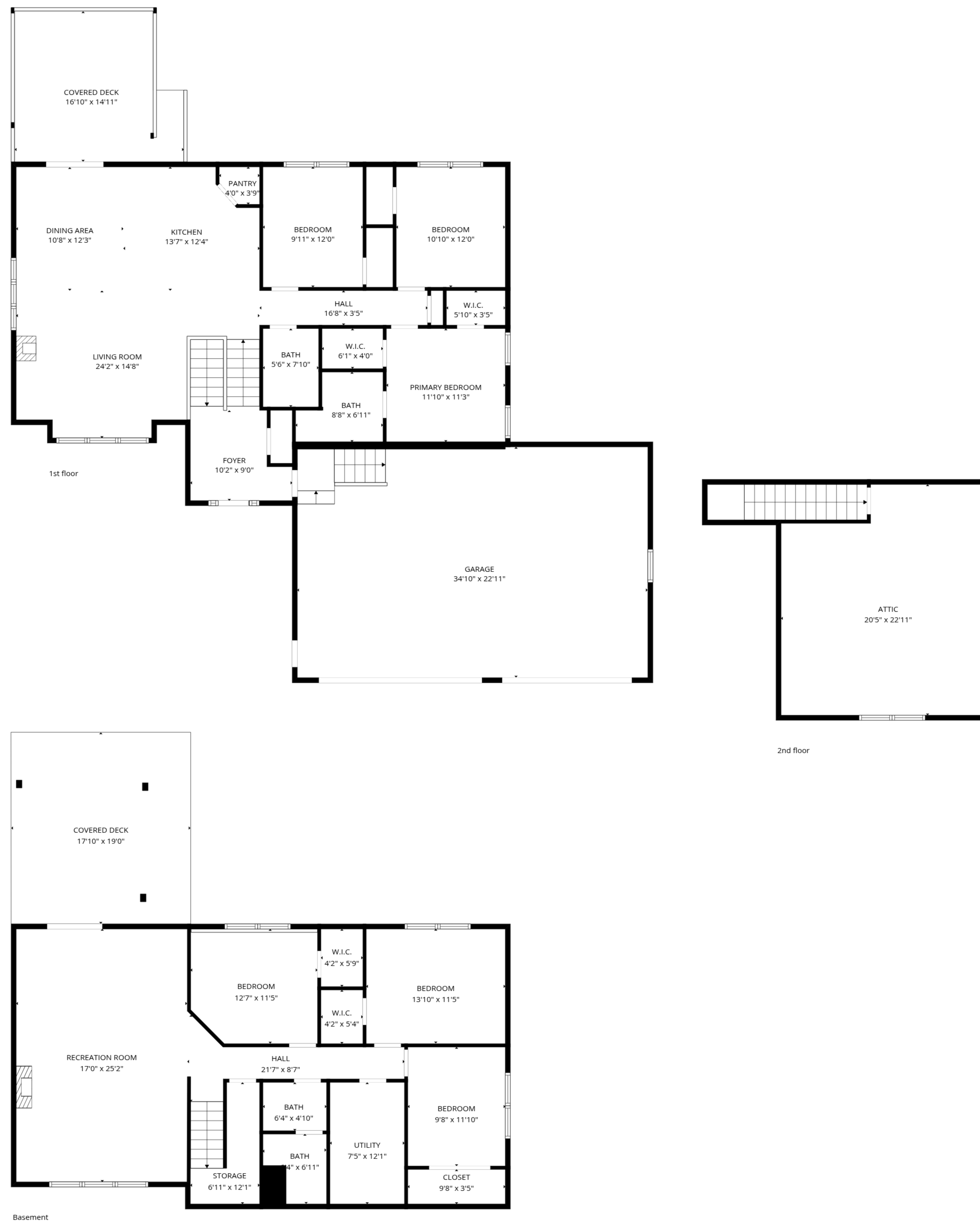


ATTIC
20'5" x 22'11"

TOTAL: 2579 sq. ft

Basement: 1150 sq. ft, 1st floor: 1369 sq. ft, 2nd floor: 60 sq. ft
EXCLUDED AREAS: UTILITY: 90 sq. ft, COVERED DECK: 570 sq. ft, STORAGE: 52 sq. ft,
GARAGE: 800 sq. ft, ATTIC: 434 sq. ft, WALLS: 258 sq. ft

SIZES AND DIMENSIONS ARE APPROXIMATE, ACTUAL MAY VARY.



TOTAL: 2579 sq. ft

Basement: 1150 sq. ft, 1st floor: 1369 sq. ft, 2nd floor: 60 sq. ft

EXCLUDED AREAS: UTILITY: 90 sq. ft, COVERED DECK: 570 sq. ft, STORAGE: 52 sq. ft,

GARAGE: 800 sq. ft, ATTIC: 434 sq. ft, WALLS: 258 sq. ft

SIZES AND DIMENSIONS ARE APPROXIMATE, ACTUAL MAY VARY.