

Home data report

2214 Valterra Vista Way, Arista, Valrico, Hillsborough County, Florida, United States, 33594



Total Area: 3117 sq. ft

1st Floor: 1377 sq. ft, 2nd Floor: 1740 sq. ft

Excluded: Garage 613 sq. ft, Undefined 14 sq. ft, Screened porch 421 sq. ft, Porch 153 sq. ft, Open to below 291 sq. ft, Walls: 250 sq. ft

Property summary

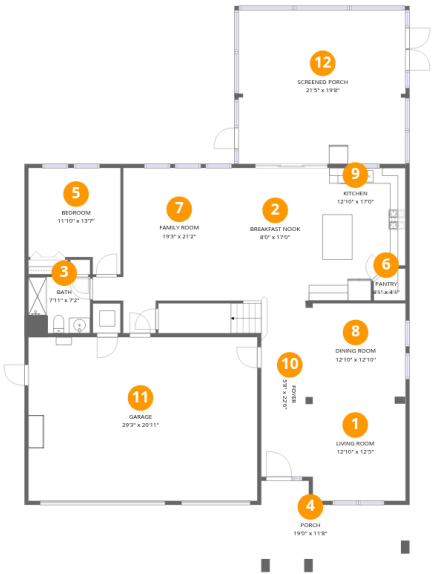
2 Floors

5 Bedrooms

4 Bathrooms

1 Garages

2214 Valterra Vista Way, Arista, Valrico, Hillsborough County, Florida, United States, 33594



Room dimensions

Floor 1 Total:1377sqft Excluded: 1201sqft

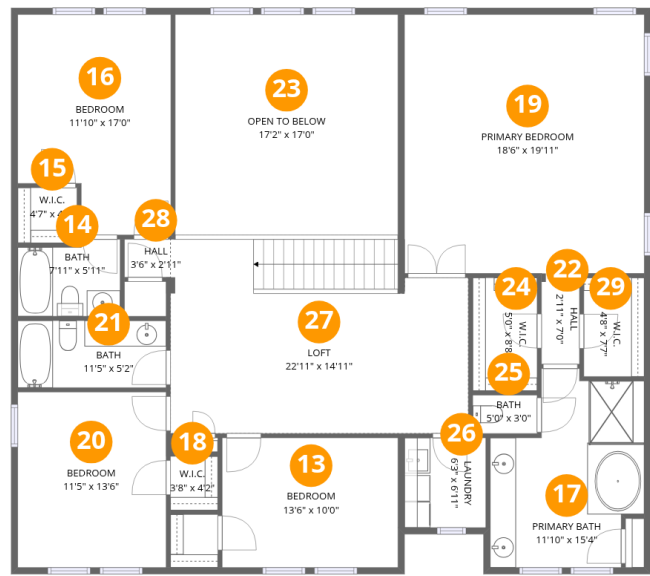
#		Dimensions	sqft	Counted as living area
1	Living Room	12'10" x 12'5"	159 sq. ft	Yes
2	Breakfast Nook	8'0" x 17'0"	136 sq. ft	Yes
3	Bath	7'11" x 7'2"	57 sq. ft	Yes
4	Porch	19'0" x 11'8"	221 sq. ft	No
5	Bedroom	11'10" x 13'7"	160 sq. ft	Yes
6	Pantry	4'1" x 4'1"	17 sq. ft	Yes
7	Family Room	19'3" x 21'2"	407 sq. ft	Yes
8	Dining Room	12'10" x 12'10"	164 sq. ft	Yes
9	Kitchen	12'10" x 17'0"	217 sq. ft	Yes
10	Foyer	5'8" x 22'6"	128 sq. ft	Yes
11	Garage	29'3" x 20'11"	613 sq. ft	No

Home data report

2214 Valterra Vista Way, Arista, Valrico, Hillsborough County,
Florida, United States, 33594

#		Dimensions	sqft	Counted as living area
12	Screened Porch	21'5" x 19'8"	421 sq. ft	No

2214 Valterra Vista Way, Arista, Valrico, Hillsborough County, Florida, United States, 33594



Room dimensions

Floor 2 Total:1740sqft Excluded: 291sqft

#		Dimensions	sqft	Counted as living area
13	Bedroom	13'6" x 10'0"	135 sq. ft	Yes
14	Bath	7'11" x 5'11"	47 sq. ft	Yes
15	W.I.C.	4'7" x 4'3"	19 sq. ft	Yes
16	Bedroom	11'10" x 17'0"	200 sq. ft	Yes
17	Primary Bath	11'10" x 15'4"	182 sq. ft	Yes
18	W.I.C.	3'8" x 4'2"	15 sq. ft	Yes
19	Primary Bedroom	18'6" x 19'11"	368 sq. ft	Yes
20	Bedroom	11'5" x 13'6"	154 sq. ft	Yes
21	Bath	11'5" x 5'2"	59 sq. ft	Yes
22	Hall	2'11" x 7'0"	20 sq. ft	Yes
23	Open To Below	17'2" x 17'0"	291 sq. ft	No

Home data report

**2214 Valterra Vista Way, Arista, Valrico, Hillsborough County,
Florida, United States, 33594**

#		Dimensions	sqft	Counted as living area
24	W.I.C.	5'0" x 8'8"	43 sq. ft	Yes
25	Bath	5'0" x 3'0"	15 sq. ft	Yes
26	Laundry	6'3" x 6'11"	43 sq. ft	Yes
27	Loft	22'11" x 14'11"	343 sq. ft	Yes
28	Hall	3'6" x 2'11"	10 sq. ft	Yes
29	W.I.C.	4'8" x 7'7"	35 sq. ft	Yes

2214 Valterra Vista Way, Arista, Valrico, Hillsborough County,
Florida, United States, 33594

1 Floor 1 - Living Room



Dimensions: 12'10" x 12'5"
Area: 159 sq. ft
Counted as living area: Yes

Heated: Yes
Finished: Yes
Enclosed: Yes
Contiguous: Yes
Permitted: Yes
Wet space: No
Addition: No
Conversion: No

2 Floor 1 - Breakfast Nook



Dimensions: 8'0" x 17'0"
Area: 136 sq. ft
Counted as living area: Yes

Heated: Yes
Finished: Yes
Enclosed: Yes
Contiguous: Yes
Permitted: Yes
Wet space: No
Addition: No
Conversion: No

2214 Valterra Vista Way, Arista, Valrico, Hillsborough County,
Florida, United States, 33594

3 Floor 1 - Bath



Dimensions: 7'11" x 7'2"
Area: 57 sq. ft
Counted as living area: Yes

Heated: Yes
Finished: Yes
Enclosed: Yes
Contiguous: Yes
Permitted: Yes
Wet space: Yes
Addition: No
Conversion: No

4 Floor 1 - Porch



Dimensions: 19'0" x 11'8"
Area: 221 sq. ft
Counted as living area: No

Heated: No
Finished: No
Enclosed: No
Contiguous: Yes
Permitted: Yes
Wet space: No
Addition: No
Conversion: No

5 Floor 1 - Bedroom



Dimensions: 11'10" x 13'7"
Area: 160 sq. ft
Counted as living area: Yes

Heated: Yes
Finished: Yes
Enclosed: Yes
Contiguous: Yes
Permitted: Yes
Wet space: No
Addition: No
Conversion: No

2214 Valterra Vista Way, Arista, Valrico, Hillsborough County,
Florida, United States, 33594

6 Floor 1 - Pantry



Dimensions: 4'1" x 4'1"
Area: 17 sq. ft
Counted as living area: Yes

Heated: Yes
Finished: Yes
Enclosed: Yes
Contiguous: Yes
Permitted: Yes
Wet space: No
Addition: No
Conversion: No

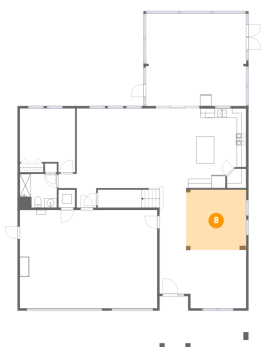
7 Floor 1 - Family Room



Dimensions: 19'3" x 21'2"
Area: 407 sq. ft
Counted as living area: Yes

Heated: Yes
Finished: Yes
Enclosed: Yes
Contiguous: Yes
Permitted: Yes
Wet space: No
Addition: No
Conversion: No

8 Floor 1 - Dining Room



Dimensions: 12'10" x 12'10"
Area: 164 sq. ft
Counted as living area: Yes

Heated: Yes
Finished: Yes
Enclosed: Yes
Contiguous: Yes
Permitted: Yes
Wet space: No
Addition: No
Conversion: No

2214 Valterra Vista Way, Arista, Valrico, Hillsborough County,
Florida, United States, 33594

9 Floor 1 - Kitchen



Dimensions: 12'10" x 17'0"
Area: 217 sq. ft
Counted as living area: Yes

Heated: Yes
Finished: Yes
Enclosed: Yes
Contiguous: Yes
Permitted: Yes
Wet space: No
Addition: No
Conversion: No

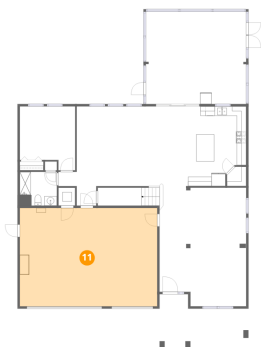
10 Floor 1 - Foyer



Dimensions: 5'8" x 22'6"
Area: 128 sq. ft
Counted as living area: Yes

Heated: Yes
Finished: Yes
Enclosed: Yes
Contiguous: Yes
Permitted: Yes
Wet space: No
Addition: No
Conversion: No

11 Floor 1 - Garage



Dimensions: 29'3" x 20'11"
Area: 613 sq. ft
Counted as living area: No

Heated: No
Finished: No
Enclosed: Yes
Contiguous: Yes
Permitted: Yes
Wet space: No
Addition: No
Conversion: No

2214 Valterra Vista Way, Arista, Valrico, Hillsborough County,
Florida, United States, 33594

12 Floor 1 - Screened Porch



Dimensions: 21'5" x 19'8"
Area: 421 sq. ft
Counted as living area: No

Heated: No
Finished: No
Enclosed: No
Contiguous: Yes
Permitted: Yes
Wet space: No
Addition: No
Conversion: No

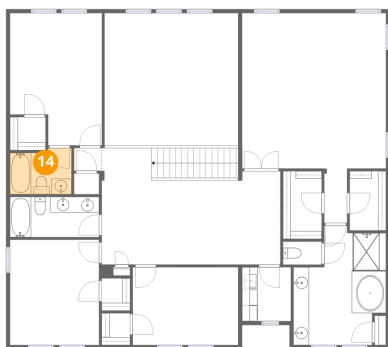
13 Floor 2 - Bedroom



Dimensions: 13'6" x 10'0"
Area: 135 sq. ft
Counted as living area: Yes

Heated: Yes
Finished: Yes
Enclosed: Yes
Contiguous: Yes
Permitted: Yes
Wet space: No
Addition: No
Conversion: No

14 Floor 2 - Bath

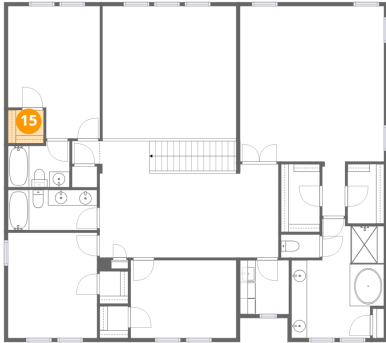


Dimensions: 7'11" x 5'11"
Area: 47 sq. ft
Counted as living area: Yes

Heated: Yes
Finished: Yes
Enclosed: Yes
Contiguous: Yes
Permitted: Yes
Wet space: Yes
Addition: No
Conversion: No

2214 Valterra Vista Way, Arista, Valrico, Hillsborough County,
Florida, United States, 33594

15 Floor 2 - W.I.C.



Dimensions: 4'7" x 4'3"
Area: 19 sq. ft
Counted as living area: Yes

Heated: Yes
Finished: Yes
Enclosed: Yes
Contiguous: Yes
Permitted: Yes
Wet space: No
Addition: No
Conversion: No

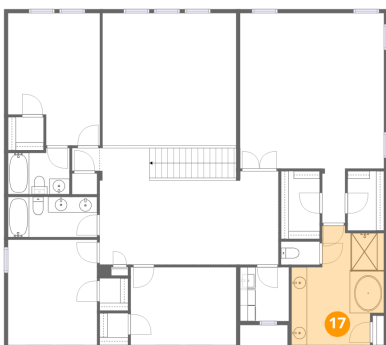
16 Floor 2 - Bedroom



Dimensions: 11'10" x 17'0"
Area: 200 sq. ft
Counted as living area: Yes

Heated: Yes
Finished: Yes
Enclosed: Yes
Contiguous: Yes
Permitted: Yes
Wet space: No
Addition: No
Conversion: No

17 Floor 2 - Primary Bath



Dimensions: 11'10" x 15'4"
Area: 182 sq. ft
Counted as living area: Yes

Heated: Yes
Finished: Yes
Enclosed: Yes
Contiguous: Yes
Permitted: Yes
Wet space: Yes
Addition: No
Conversion: No

2214 Valterra Vista Way, Arista, Valrico, Hillsborough County,
Florida, United States, 33594

18 Floor 2 - W.I.C.



Dimensions: 3'8" x 4'2"
Area: 15 sq. ft
Counted as living area: Yes

Heated: Yes
Finished: Yes
Enclosed: Yes
Contiguous: Yes
Permitted: Yes
Wet space: No
Addition: No
Conversion: No

19 Floor 2 - Primary Bedroom



Dimensions: 18'6" x 19'11"
Area: 368 sq. ft
Counted as living area: Yes

Heated: Yes
Finished: Yes
Enclosed: Yes
Contiguous: Yes
Permitted: Yes
Wet space: No
Addition: No
Conversion: No

20 Floor 2 - Bedroom

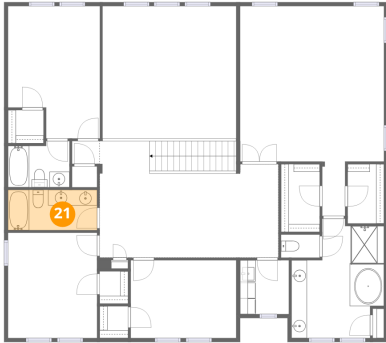


Dimensions: 11'5" x 13'6"
Area: 154 sq. ft
Counted as living area: Yes

Heated: Yes
Finished: Yes
Enclosed: Yes
Contiguous: Yes
Permitted: Yes
Wet space: No
Addition: No
Conversion: No

2214 Valterra Vista Way, Arista, Valrico, Hillsborough County,
Florida, United States, 33594

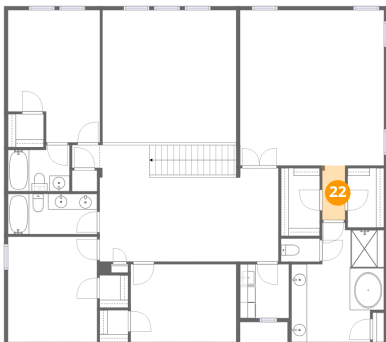
21 Floor 2 - Bath



Dimensions: 11'5" x 5'2"
Area: 59 sq. ft
Counted as living area: Yes

Heated: Yes
Finished: Yes
Enclosed: Yes
Contiguous: Yes
Permitted: Yes
Wet space: Yes
Addition: No
Conversion: No

22 Floor 2 - Hall



Dimensions: 2'11" x 7'0"
Area: 20 sq. ft
Counted as living area: Yes

Heated: Yes
Finished: Yes
Enclosed: Yes
Contiguous: Yes
Permitted: Yes
Wet space: No
Addition: No
Conversion: No

23 Floor 2 - Open To Below



Dimensions: 17'2" x 17'0"
Area: 291 sq. ft
Counted as living area: No

Heated: No
Finished: No
Enclosed: No
Contiguous: Yes
Permitted: No
Wet space: No
Addition: No
Conversion: No

2214 Valterra Vista Way, Arista, Valrico, Hillsborough County,
Florida, United States, 33594

24 Floor 2 - W.I.C.



Dimensions: 5'0" x 8'8"
Area: 43 sq. ft
Counted as living area: Yes

Heated: Yes
Finished: Yes
Enclosed: Yes
Contiguous: Yes
Permitted: Yes
Wet space: No
Addition: No
Conversion: No

25 Floor 2 - Bath



Dimensions: 5'0" x 3'0"
Area: 15 sq. ft
Counted as living area: Yes

Heated: Yes
Finished: Yes
Enclosed: Yes
Contiguous: Yes
Permitted: Yes
Wet space: Yes
Addition: No
Conversion: No

26 Floor 2 - Laundry

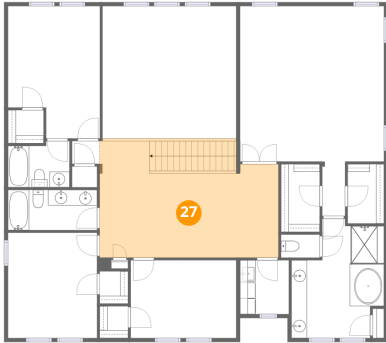


Dimensions: 6'3" x 6'11"
Area: 43 sq. ft
Counted as living area: Yes

Heated: Yes
Finished: Yes
Enclosed: Yes
Contiguous: Yes
Permitted: Yes
Wet space: No
Addition: No
Conversion: No

2214 Valterra Vista Way, Arista, Valrico, Hillsborough County,
Florida, United States, 33594

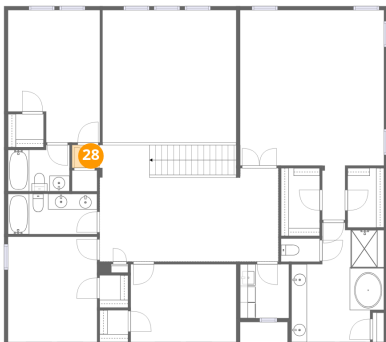
27 Floor 2 - Loft



Dimensions: 22'11" x 14'11"
Area: 343 sq. ft
Counted as living area: Yes

Heated: Yes
Finished: Yes
Enclosed: Yes
Contiguous: Yes
Permitted: Yes
Wet space: No
Addition: No
Conversion: No

28 Floor 2 - Hall



Dimensions: 3'6" x 2'11"
Area: 10 sq. ft
Counted as living area: Yes

Heated: Yes
Finished: Yes
Enclosed: Yes
Contiguous: Yes
Permitted: Yes
Wet space: No
Addition: No
Conversion: No

29 Floor 2 - W.I.C.



Dimensions: 4'8" x 7'7"
Area: 35 sq. ft
Counted as living area: Yes

Heated: Yes
Finished: Yes
Enclosed: Yes
Contiguous: Yes
Permitted: Yes
Wet space: No
Addition: No
Conversion: No