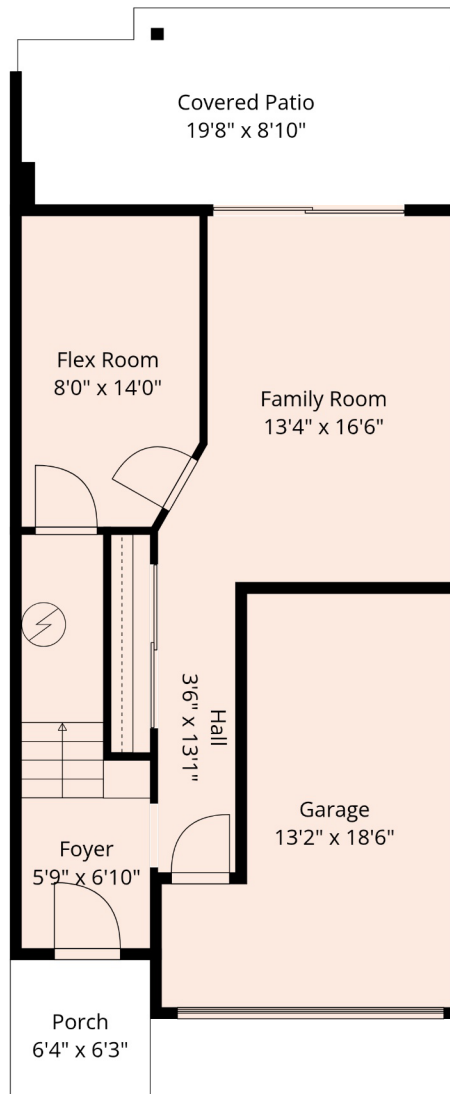


#2 - 520 HOT SPRINGS ROAD



Estimated Areas:

Below Main: 507 sq. ft

Main Floor: 732 sq. ft

Above Main: 770 sq. ft

Total Sq. Ft: 2009

Additional Areas:

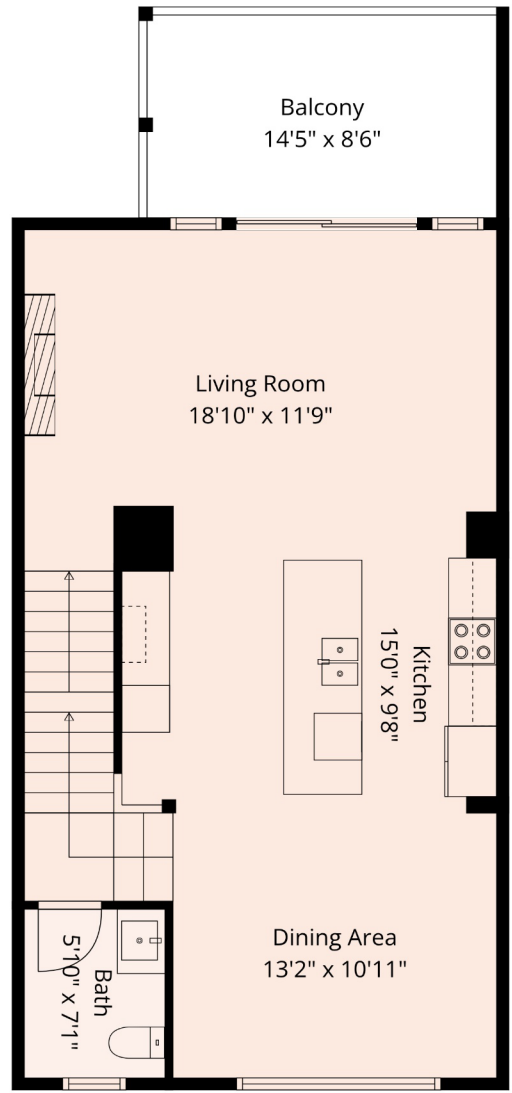
Covered Patio: 165 sq. ft

Balcony: 123 sq. ft

Garage: 208 sq. ft

Porch: 39 sq. ft

#2 - 520 HOT SPRINGS ROAD



Estimated Areas:

Below Main: 507 sq. ft

Main Floor: 732 sq. ft

Above Main: 770 sq. ft

Total Sq. Ft: 2009

Additional Areas:

Covered Patio: 165 sq. ft

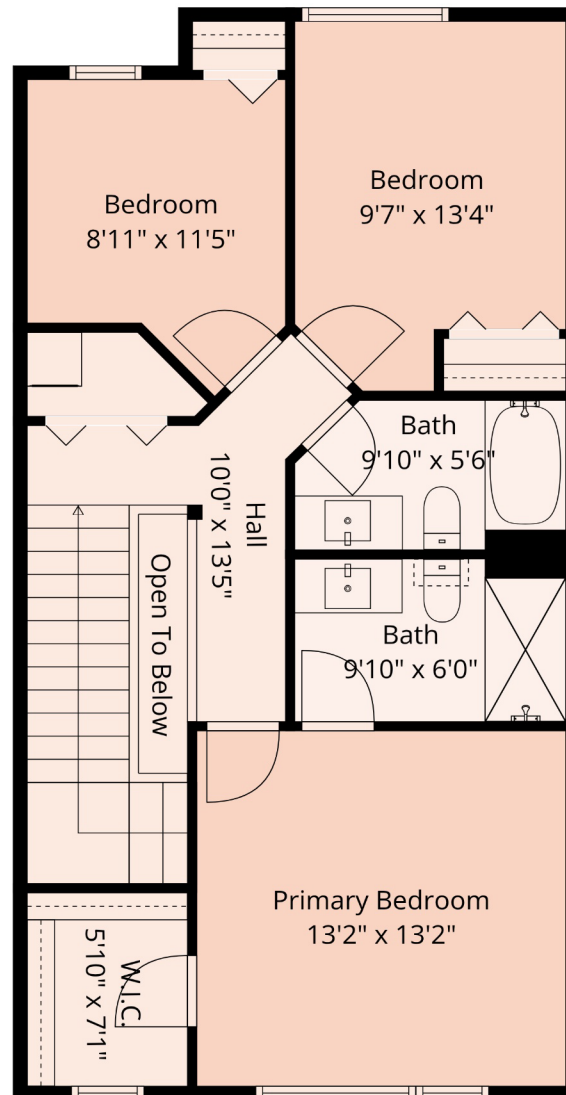
Balcony: 123 sq. ft

Garage: 208 sq. ft

Porch: 39 sq. ft

*** E&O Insured. For advertising purposes only. Not intended for architectural or construction use. Floorplan and measurements are approximate within +/- 2% tolerance

#2 - 520 HOT SPRINGS ROAD



Estimated Areas:

Below Main: 507 sq. ft

Main Floor: 732 sq. ft

Above Main: 770 sq. ft

Total Sq. Ft: 2009

Additional Areas:

Covered Patio: 165 sq. ft

Balcony: 123 sq. ft

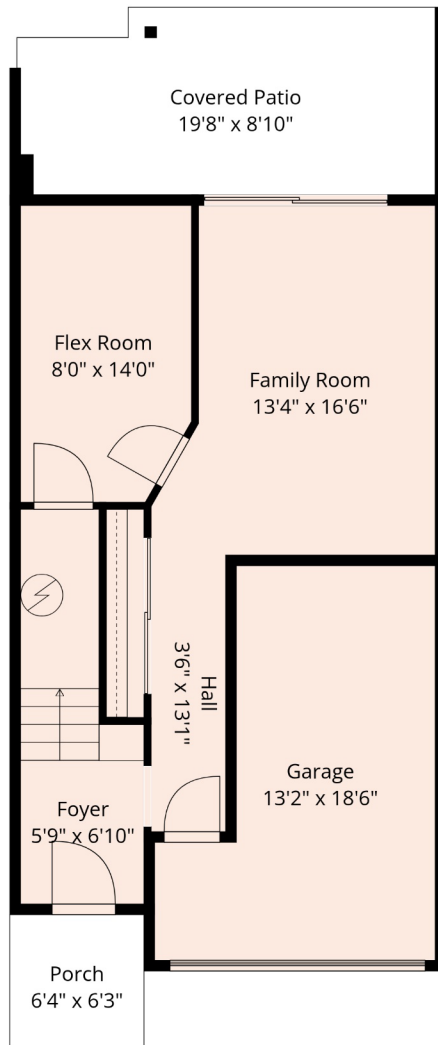
Garage: 208 sq. ft

Porch: 39 sq. ft

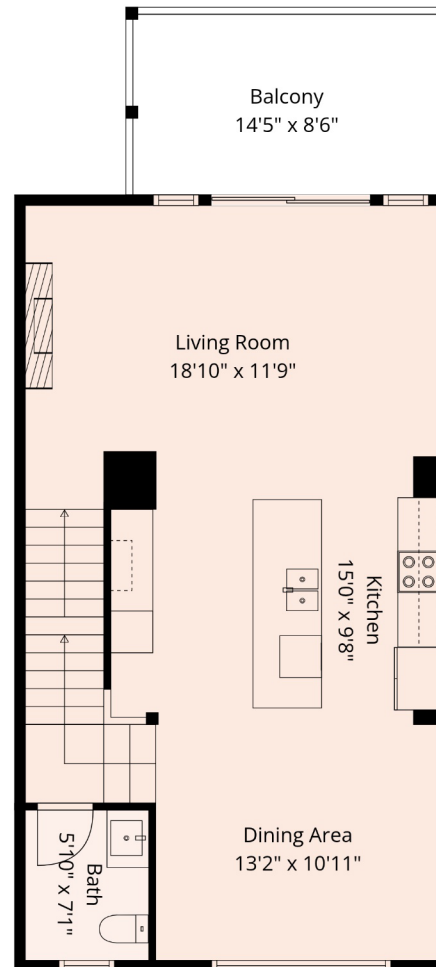
#2 - 520 HOT SPRINGS ROAD



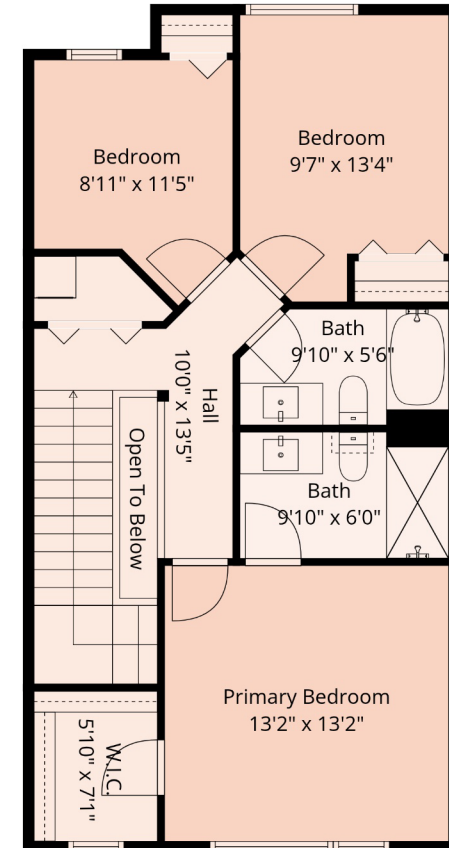
HARDYTEAM.CA | INFO@HARDYTEAM.CA



Below Main



Main Floor



Above Main

Estimated Areas:

Below Main: 507 sq. ft

Main Floor: 732 sq. ft

Above Main: 770 sq. ft

Total Sq. Ft: 2009

Additional Areas:

Covered Patio: 165 sq. ft

Balcony: 123 sq. ft

Garage: 208 sq. ft

Porch: 39 sq. ft