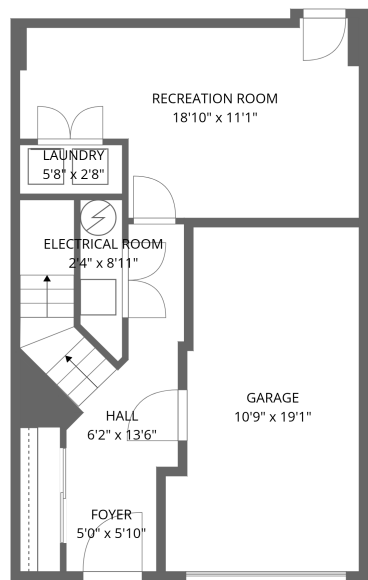
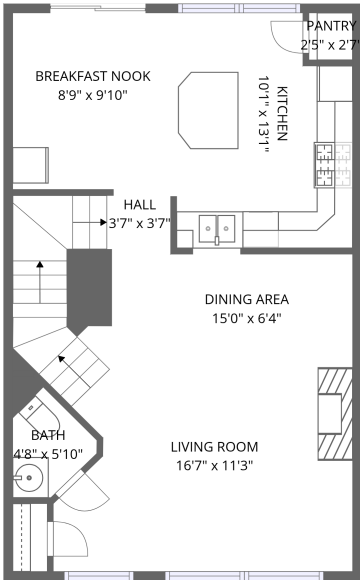


Home data report

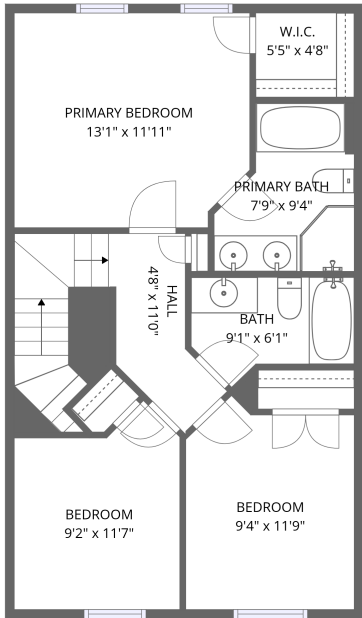
278 Scarboro Drive, Bunker Hill, Berkeley County, West Virginia,
United States, 25413



Basement 1



1st floor




2nd floor


Total Area: 1562 sq. ft

Basement 1: 351 sq. ft, 1st Floor: 586 sq. ft, 2nd Floor: 625 sq. ft
Excluded: Electrical room 19 sq. ft, Garage 187 sq. ft, Walls: 168 sq. ft

Property summary

 **3** Floors

 **3** Bedrooms

 **2** Bathrooms

Home data report

**278 Scarboro Drive, Bunker Hill, Berkeley County, West Virginia,
United States, 25413**



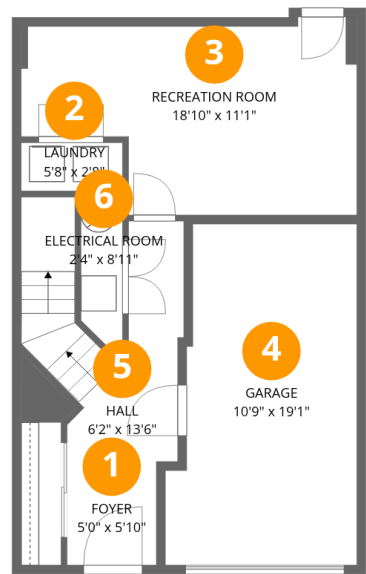
1
Half baths



1
Garages

Home data report

278 Scarboro Drive, Bunker Hill, Berkeley County, West Virginia,
United States, 25413



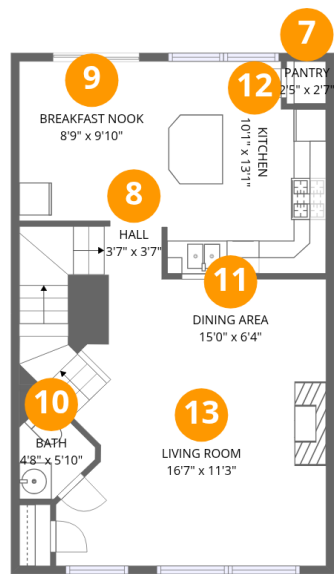
Room dimensions

Floor 1 Below grade Total:351sqft Excluded: 206sqft

#		Dimensions	sqft	Counted as living area
1	Foyer	5'0" x 5'10"	29 sq. ft	Yes
2	Laundry	5'8" x 2'8"	15 sq. ft	Yes
3	Recreation Room	18'10" x 11'1"	209 sq. ft	Yes
4	Garage	10'9" x 19'1"	205 sq. ft	No
5	Hall	6'2" x 13'6"	84 sq. ft	Yes
6	Electrical Room	2'4" x 8'11"	21 sq. ft	No

Home data report

278 Scarboro Drive, Bunker Hill, Berkeley County, West Virginia,
United States, 25413



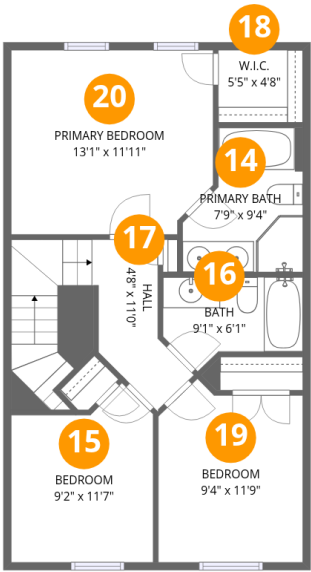
Room dimensions

Floor 2 Total:586sqft Excluded: 0sqft

#		Dimensions	sqft	Counted as living area
7	Pantry	2'5" x 2'7"	6 sq. ft	Yes
8	Hall	3'7" x 3'7"	13 sq. ft	Yes
9	Breakfast Nook	8'9" x 9'10"	86 sq. ft	Yes
10	Bath	4'8" x 5'10"	27 sq. ft	Yes
11	Dining Area	15'0" x 6'4"	95 sq. ft	Yes
12	Kitchen	10'1" x 13'1"	132 sq. ft	Yes
13	Living Room	16'7" x 11'3"	187 sq. ft	Yes

Home data report

278 Scarboro Drive, Bunker Hill, Berkeley County, West Virginia,
United States, 25413

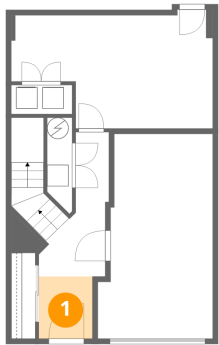


Room dimensions

Floor 3 Total:625sqft Excluded: 0sqft

#		Dimensions	sqft	Counted as living area
14	Primary Bath	7'9" x 9'4"	73 sq. ft	Yes
15	Bedroom	9'2" x 11'7"	106 sq. ft	Yes
16	Bath	9'1" x 6'1"	55 sq. ft	Yes
17	Hall	4'8" x 11'0"	52 sq. ft	Yes
18	W.I.C.	5'5" x 4'8"	25 sq. ft	Yes
19	Bedroom	9'4" x 11'9"	110 sq. ft	Yes
20	Primary Bedroom	13'1" x 11'11"	155 sq. ft	Yes

1 Floor 1 - Foyer



Dimensions: 5'0" x 5'10"
Area: 29 sq. ft
Counted as living area: Yes

Heated: Yes
Finished: Yes
Enclosed: Yes
Contiguous: Yes
Permitted: Yes
Wet space: No
Addition: No
Conversion: No

2 Floor 1 - Laundry



Dimensions: 5'8" x 2'8"
Area: 15 sq. ft
Counted as living area: Yes

Heated: Yes
Finished: Yes
Enclosed: Yes
Contiguous: Yes
Permitted: Yes
Wet space: No
Addition: No
Conversion: No

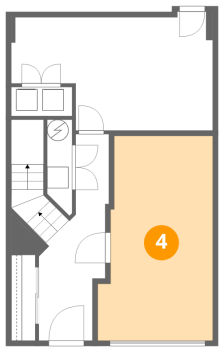
3 Floor 1 - Recreation Room



Dimensions: 18'10" x 11'1"
Area: 209 sq. ft
Counted as living area: Yes

Heated: Yes
Finished: Yes
Enclosed: Yes
Contiguous: Yes
Permitted: Yes
Wet space: No
Addition: No
Conversion: No

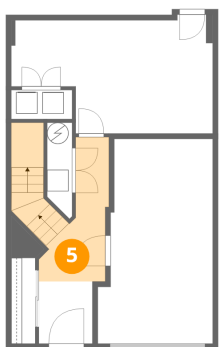
4 Floor 1 - Garage



Dimensions: 10'9" x 19'1"
Area: 205 sq. ft
Counted as living area: No

Heated: No
Finished: No
Enclosed: Yes
Contiguous: Yes
Permitted: Yes
Wet space: No
Addition: No
Conversion: No

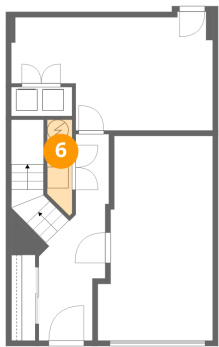
5 Floor 1 - Hall



Dimensions: 6'2" x 13'6"
Area: 84 sq. ft
Counted as living area: Yes

Heated: Yes
Finished: Yes
Enclosed: Yes
Contiguous: Yes
Permitted: Yes
Wet space: No
Addition: No
Conversion: No

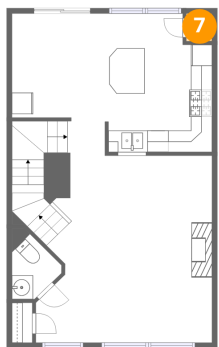
6 Floor 1 - Electrical Room



Dimensions: 2'4" x 8'11"
Area: 21 sq. ft
Counted as living area: No

Heated: No
Finished: No
Enclosed: Yes
Contiguous: Yes
Permitted: Yes
Wet space: No
Addition: No
Conversion: No

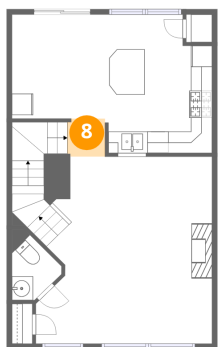
7 Floor 2 - Pantry



Dimensions: 2'5" x 2'7"
Area: 6 sq. ft
Counted as living area: Yes

Heated: Yes
Finished: Yes
Enclosed: Yes
Contiguous: Yes
Permitted: Yes
Wet space: No
Addition: No
Conversion: No

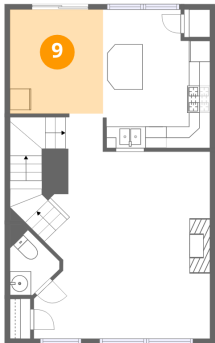
8 Floor 2 - Hall



Dimensions: 3'7" x 3'7"
Area: 13 sq. ft
Counted as living area: Yes

Heated: Yes
Finished: Yes
Enclosed: Yes
Contiguous: Yes
Permitted: Yes
Wet space: No
Addition: No
Conversion: No

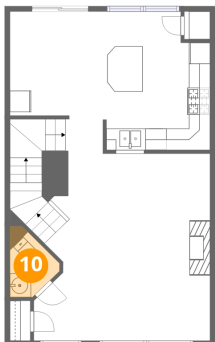
9 Floor 2 - Breakfast Nook



Dimensions: 8'9" x 9'10"
Area: 86 sq. ft
Counted as living area: Yes

Heated: Yes
Finished: Yes
Enclosed: Yes
Contiguous: Yes
Permitted: Yes
Wet space: No
Addition: No
Conversion: No

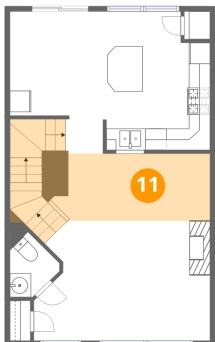
10 Floor 2 - Bath



Dimensions: 4'8" x 5'10"
Area: 27 sq. ft
Counted as living area: Yes

Heated: Yes
Finished: Yes
Enclosed: Yes
Contiguous: Yes
Permitted: Yes
Wet space: Yes
Addition: No
Conversion: No

11 Floor 2 - Dining Area



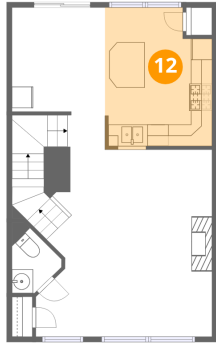
Dimensions: 15'0" x 6'4"
Area: 95 sq. ft
Counted as living area: Yes

Heated: Yes
Finished: Yes
Enclosed: Yes
Contiguous: Yes
Permitted: Yes
Wet space: No
Addition: No
Conversion: No

Home data report

278 Scarboro Drive, Bunker Hill, Berkeley County, West Virginia,
United States, 25413

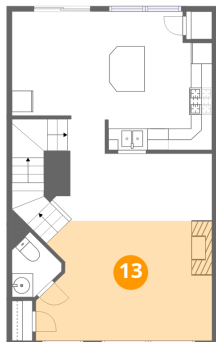
12 Floor 2 - Kitchen



Dimensions: 10'1" x 13'1"
Area: 132 sq. ft
Counted as living area: Yes

Heated: Yes
Finished: Yes
Enclosed: Yes
Contiguous: Yes
Permitted: Yes
Wet space: No
Addition: No
Conversion: No

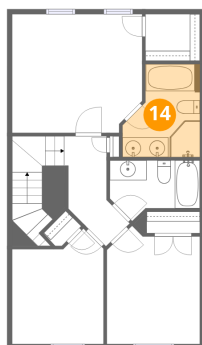
13 Floor 2 - Living Room



Dimensions: 16'7" x 11'3"
Area: 187 sq. ft
Counted as living area: Yes

Heated: Yes
Finished: Yes
Enclosed: Yes
Contiguous: Yes
Permitted: Yes
Wet space: No
Addition: No
Conversion: No

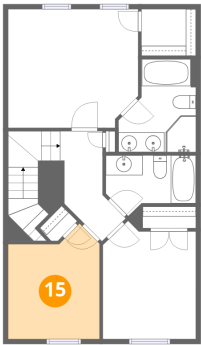
14 Floor 3 - Primary Bath



Dimensions: 7'9" x 9'4"
Area: 73 sq. ft
Counted as living area: Yes

Heated: Yes
Finished: Yes
Enclosed: Yes
Contiguous: Yes
Permitted: Yes
Wet space: Yes
Addition: No
Conversion: No

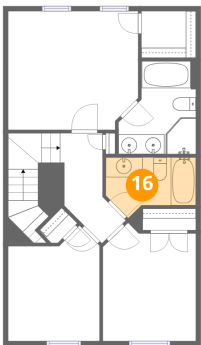
15 Floor 3 - Bedroom



Dimensions: 9'2" x 11'7"
Area: 106 sq. ft
Counted as living area: Yes

Heated: Yes
Finished: Yes
Enclosed: Yes
Contiguous: Yes
Permitted: Yes
Wet space: No
Addition: No
Conversion: No

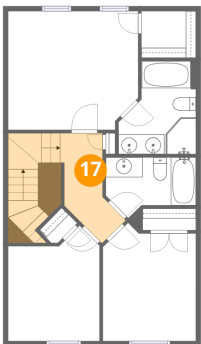
16 Floor 3 - Bath



Dimensions: 9'1" x 6'1"
Area: 55 sq. ft
Counted as living area: Yes

Heated: Yes
Finished: Yes
Enclosed: Yes
Contiguous: Yes
Permitted: Yes
Wet space: Yes
Addition: No
Conversion: No

17 Floor 3 - Hall



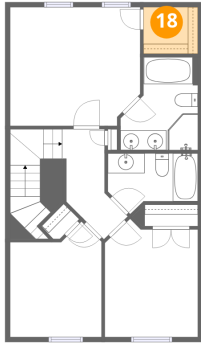
Dimensions: 4'8" x 11'0"
Area: 52 sq. ft
Counted as living area: Yes

Heated: Yes
Finished: Yes
Enclosed: Yes
Contiguous: Yes
Permitted: Yes
Wet space: No
Addition: No
Conversion: No

Home data report

278 Scarboro Drive, Bunker Hill, Berkeley County, West Virginia,
United States, 25413

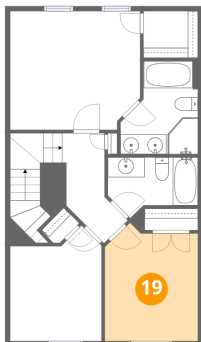
18 Floor 3 - W.I.C.



Dimensions: 5'5" x 4'8"
Area: 25 sq. ft
Counted as living area: Yes

Heated: Yes
Finished: Yes
Enclosed: Yes
Contiguous: Yes
Permitted: Yes
Wet space: No
Addition: No
Conversion: No

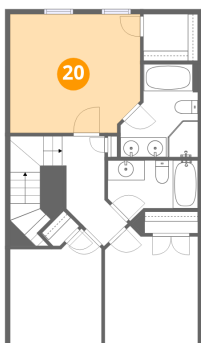
19 Floor 3 - Bedroom



Dimensions: 9'4" x 11'9"
Area: 110 sq. ft
Counted as living area: Yes

Heated: Yes
Finished: Yes
Enclosed: Yes
Contiguous: Yes
Permitted: Yes
Wet space: No
Addition: No
Conversion: No

20 Floor 3 - Primary Bedroom



Dimensions: 13'1" x 11'11"
Area: 155 sq. ft
Counted as living area: Yes

Heated: Yes
Finished: Yes
Enclosed: Yes
Contiguous: Yes
Permitted: Yes
Wet space: No
Addition: No
Conversion: No