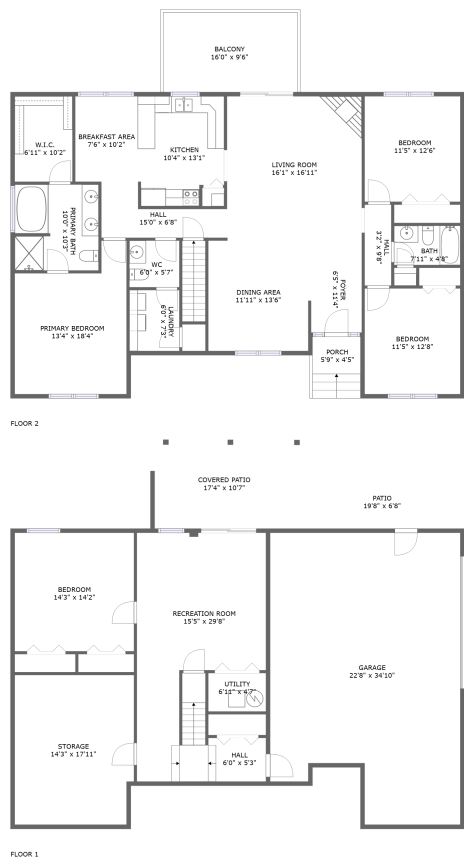


Home report

114 Aftons Meadow Road, Vinton, Bedford County, Virginia,
United States, 24179



Total Area: 2408 sq. ft

Below Ground: 678 sq. ft, Floor 2: 1730 sq. ft

Excluded: Garage 718 sq. ft, Storage 250 sq. ft, Utility 32 sq. ft, Covered patio 184 sq. ft, Patio 132 sq. ft, Balcony 153 sq. ft, Porch 25 sq. ft, Walls: 212 sq. ft

Property summary

 **2** Floors

 **4** Bedrooms

 **2** Bathrooms

Home report

**114 Aftons Meadow Road, Vinton, Bedford County, Virginia,
United States, 24179**



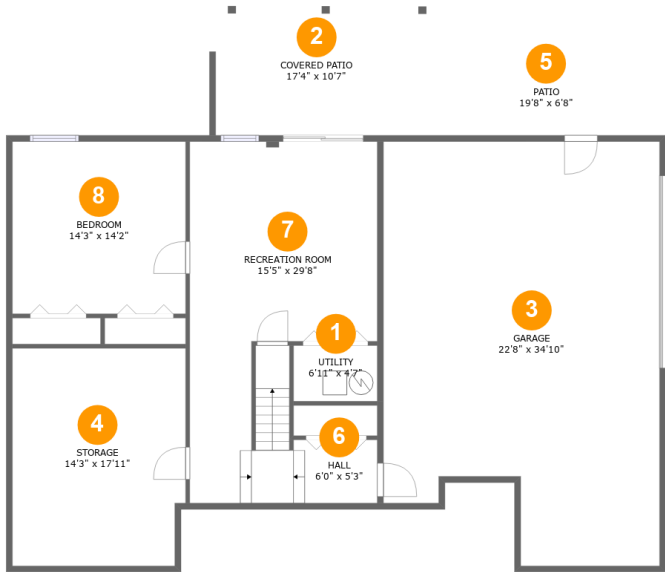
1
Half baths



1
Garages

Home report

114 Aftons Meadow Road, Vinton, Bedford County, Virginia,
United States, 24179



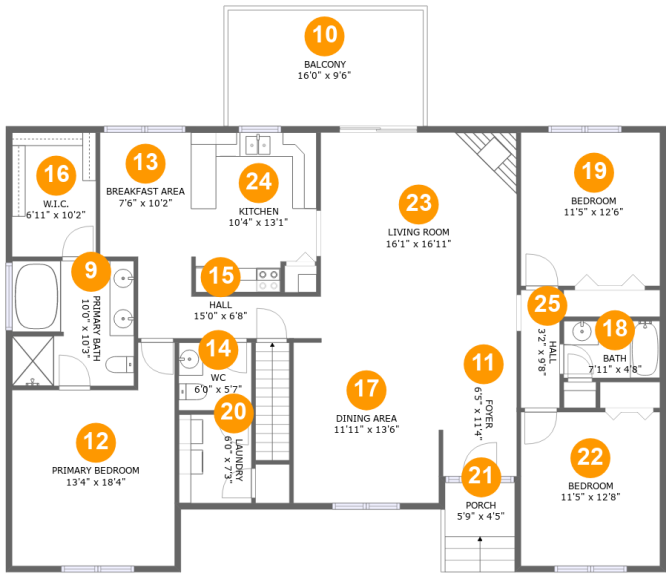
Room dimensions

Floor 1 Below ground Total:678sqft Excluded: 1316sqft

#		Max Dimensions	sqft	Included
1	Utility	6'11" x 4'7"	32 sq. ft	No
2	Covered Patio	17'4" x 10'7"	184 sq. ft	No
3	Garage	22'8" x 34'10"	718 sq. ft	No
4	Storage	14'3" x 17'11"	250 sq. ft	No
5	Patio	19'8" x 6'8"	132 sq. ft	No
6	Hall	6'0" x 5'3"	37 sq. ft	Yes
7	Recreation Room	15'5" x 29'8"	358 sq. ft	Yes
8	Bedroom	14'3" x 14'2"	201 sq. ft	Yes

Home report

114 Aftons Meadow Road, Vinton, Bedford County, Virginia,
United States, 24179



Room dimensions

Floor 2 Total:1730sqft Excluded: 178sqft

#		Max Dimensions	sqft	Included
9	Primary Bath	10'0" x 10'3"	101 sq. ft	Yes
10	Balcony	16'0" x 9'6"	153 sq. ft	No
11	Foyer	6'5" x 11'4"	71 sq. ft	Yes
12	Primary Bedroom	13'4" x 18'4"	204 sq. ft	Yes
13	Breakfast Area	7'6" x 10'2"	76 sq. ft	Yes
14	WC	6'0" x 5'7"	33 sq. ft	Yes
15	Hall	15'0" x 6'8"	66 sq. ft	Yes
16	W.I.C.	6'11" x 10'2"	70 sq. ft	Yes
17	Dining Area	11'11" x 13'6"	161 sq. ft	Yes
18	Bath	7'11" x 4'8"	37 sq. ft	Yes
19	Bedroom	11'5" x 12'6"	144 sq. ft	Yes

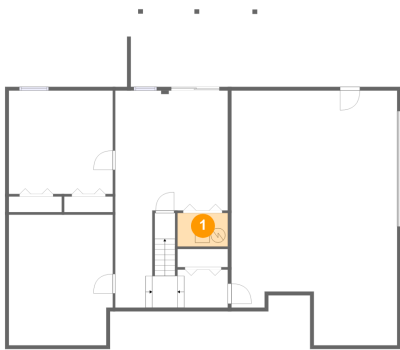
Home report

**114 Aftons Meadow Road, Vinton, Bedford County, Virginia,
United States, 24179**

#		Max Dimensions	sqft	Included
20	Laundry	6'0" x 7'3"	43 sq. ft	Yes
21	Porch	5'9" x 4'5"	25 sq. ft	No
22	Bedroom	11'5" x 12'8"	144 sq. ft	Yes
23	Living Room	16'1" x 16'11"	272 sq. ft	Yes
24	Kitchen	10'4" x 13'1"	127 sq. ft	Yes
25	Hall	3'2" x 9'8"	31 sq. ft	Yes

114 Aftons Meadow Road, Vinton, Bedford County, Virginia,
United States, 24179

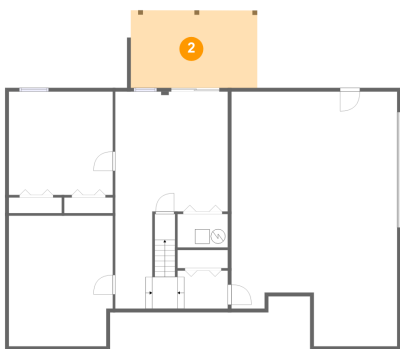
1 Floor 1 - Utility



Max Dimensions: 6'11" x 4'7"
Calculated Area: 32 sq. ft
Included: No

Heated: Yes
Finished: No
Enclosed: Yes
Contiguous: Yes
Permitted: Yes
Wet space: No
Addition: No
Conversion: No

2 Floor 1 - Covered Patio

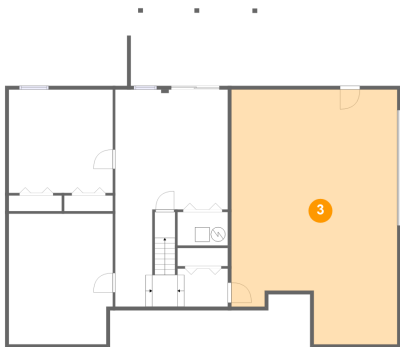


Max Dimensions: 17'4" x 10'7"
Calculated Area: 184 sq. ft
Included: No

Heated: No
Finished: Yes
Enclosed: No
Contiguous: Yes
Permitted: Yes
Wet space: No
Addition: No
Conversion: No

114 Aftons Meadow Road, Vinton, Bedford County, Virginia,
United States, 24179

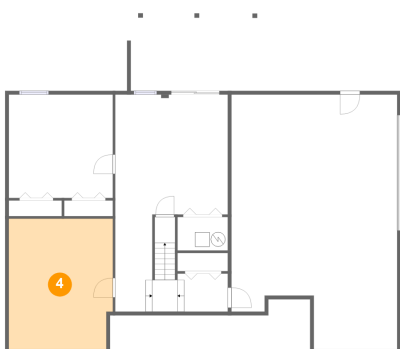
3 Floor 1 - Garage



Max Dimensions: 22'8" x 34'10"
Calculated Area: 718 sq. ft
Included: No

Heated: No
Finished: No
Enclosed: Yes
Contiguous: Yes
Permitted: Yes
Wet space: No
Addition: No
Conversion: No

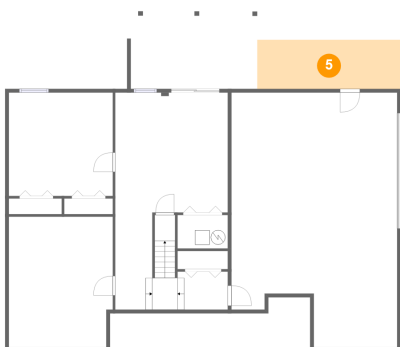
4 Floor 1 - Storage



Max Dimensions: 14'3" x 17'11"
Calculated Area: 250 sq. ft
Included: No

Heated: No
Finished: No
Enclosed: No
Contiguous: Yes
Permitted: Yes
Wet space: No
Addition: No
Conversion: No

5 Floor 1 - Patio

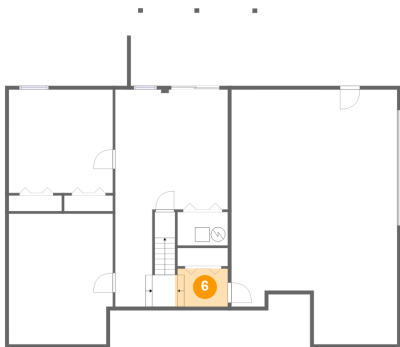


Max Dimensions: 19'8" x 6'8"
Calculated Area: 132 sq. ft
Included: No

Heated: No
Finished: Yes
Enclosed: No
Contiguous: Yes
Permitted: Yes
Wet space: No
Addition: No
Conversion: No

114 Aftons Meadow Road, Vinton, Bedford County, Virginia,
United States, 24179

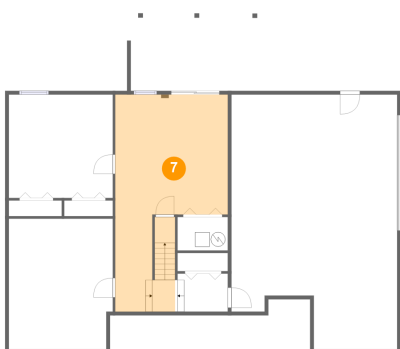
6 Floor 1 - Hall



Max Dimensions: 6'0" x 5'3"
Calculated Area: 37 sq. ft
Included: Yes

Heated: Yes
Finished: Yes
Enclosed: Yes
Contiguous: Yes
Permitted: Yes
Wet space: No
Addition: No
Conversion: No

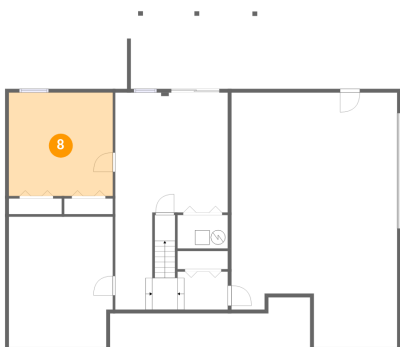
7 Floor 1 - Recreation Room



Max Dimensions: 15'5" x 29'8"
Calculated Area: 358 sq. ft
Included: Yes

Heated: Yes
Finished: Yes
Enclosed: Yes
Contiguous: Yes
Permitted: Yes
Wet space: No
Addition: No
Conversion: No

8 Floor 1 - Bedroom



Max Dimensions: 14'3" x 14'2"
Calculated Area: 201 sq. ft
Included: Yes

Heated: Yes
Finished: Yes
Enclosed: Yes
Contiguous: Yes
Permitted: Yes
Wet space: No
Addition: No
Conversion: No

114 Aftons Meadow Road, Vinton, Bedford County, Virginia,
United States, 24179

9 Floor 2 - Primary Bath



Max Dimensions: 10'0" x 10'3"
Calculated Area: 101 sq. ft
Included: Yes

Heated: Yes
Finished: Yes
Enclosed: Yes
Contiguous: Yes
Permitted: Yes
Wet space: Yes
Addition: No
Conversion: No

10 Floor 2 - Balcony



Max Dimensions: 16'0" x 9'6"
Calculated Area: 153 sq. ft
Included: No

Heated: No
Finished: Yes
Enclosed: No
Contiguous: Yes
Permitted: Yes
Wet space: No
Addition: No
Conversion: No

11 Floor 2 - Foyer

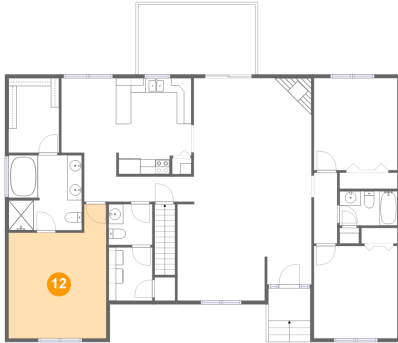


Max Dimensions: 6'5" x 11'4"
Calculated Area: 71 sq. ft
Included: Yes

Heated: Yes
Finished: Yes
Enclosed: Yes
Contiguous: Yes
Permitted: Yes
Wet space: No
Addition: No
Conversion: No

114 Aftons Meadow Road, Vinton, Bedford County, Virginia,
United States, 24179

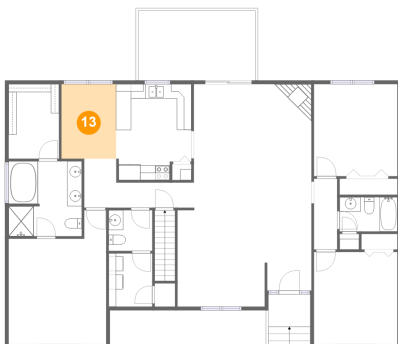
12 Floor 2 - Primary Bedroom



Max Dimensions: 13'4" x 18'4"
Calculated Area: 204 sq. ft
Included: Yes

Heated: Yes
Finished: Yes
Enclosed: Yes
Contiguous: Yes
Permitted: Yes
Wet space: No
Addition: No
Conversion: No

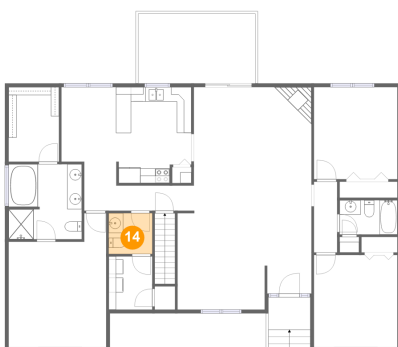
13 Floor 2 - Breakfast Area



Max Dimensions: 7'6" x 10'2"
Calculated Area: 76 sq. ft
Included: Yes

Heated: Yes
Finished: Yes
Enclosed: Yes
Contiguous: Yes
Permitted: Yes
Wet space: No
Addition: No
Conversion: No

14 Floor 2 - WC



Max Dimensions: 6'0" x 5'7"
Calculated Area: 33 sq. ft
Included: Yes

Heated: Yes
Finished: Yes
Enclosed: Yes
Contiguous: Yes
Permitted: Yes
Wet space: Yes
Addition: No
Conversion: No

114 Aftons Meadow Road, Vinton, Bedford County, Virginia,
United States, 24179

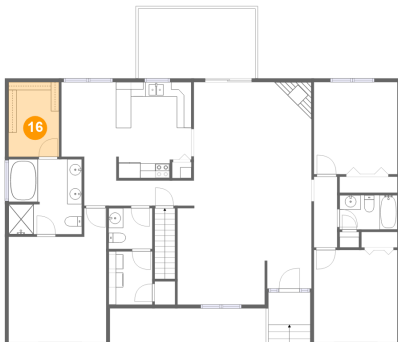
15 Floor 2 - Hall



Max Dimensions: 15'0" x 6'8"
Calculated Area: 66 sq. ft
Included: Yes

Heated: Yes
Finished: Yes
Enclosed: Yes
Contiguous: Yes
Permitted: Yes
Wet space: No
Addition: No
Conversion: No

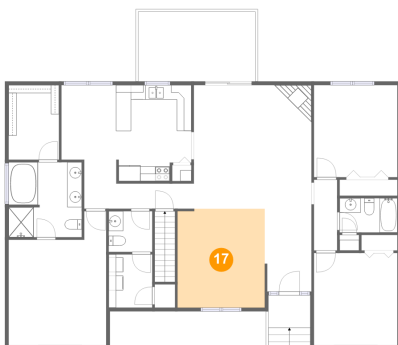
16 Floor 2 - W.I.C.



Max Dimensions: 6'11" x 10'2"
Calculated Area: 70 sq. ft
Included: Yes

Heated: Yes
Finished: Yes
Enclosed: Yes
Contiguous: Yes
Permitted: Yes
Wet space: No
Addition: No
Conversion: No

17 Floor 2 - Dining Area



Max Dimensions: 11'11" x 13'6"
Calculated Area: 161 sq. ft
Included: Yes

Heated: Yes
Finished: Yes
Enclosed: Yes
Contiguous: Yes
Permitted: Yes
Wet space: No
Addition: No
Conversion: No

114 Aftons Meadow Road, Vinton, Bedford County, Virginia,
United States, 24179

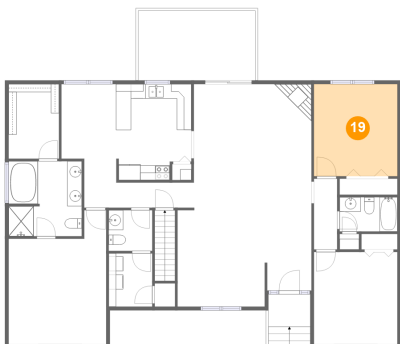
18 Floor 2 - Bath



Max Dimensions: 7'11" x 4'8"
Calculated Area: 37 sq. ft
Included: Yes

Heated: Yes
Finished: Yes
Enclosed: Yes
Contiguous: Yes
Permitted: Yes
Wet space: Yes
Addition: No
Conversion: No

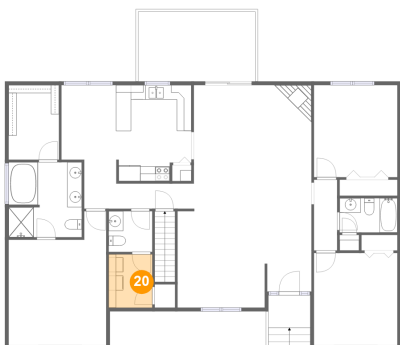
19 Floor 2 - Bedroom



Max Dimensions: 11'5" x 12'6"
Calculated Area: 144 sq. ft
Included: Yes

Heated: Yes
Finished: Yes
Enclosed: Yes
Contiguous: Yes
Permitted: Yes
Wet space: No
Addition: No
Conversion: No

20 Floor 2 - Laundry



Max Dimensions: 6'0" x 7'3"
Calculated Area: 43 sq. ft
Included: Yes

Heated: Yes
Finished: Yes
Enclosed: Yes
Contiguous: Yes
Permitted: Yes
Wet space: No
Addition: No
Conversion: No

114 Aftons Meadow Road, Vinton, Bedford County, Virginia,
United States, 24179

21 Floor 2 - Porch



Max Dimensions: 5'9" x 4'5"
Calculated Area: 25 sq. ft
Included: No

Heated: No
Finished: Yes
Enclosed: No
Contiguous: Yes
Permitted: Yes
Wet space: No
Addition: No
Conversion: No

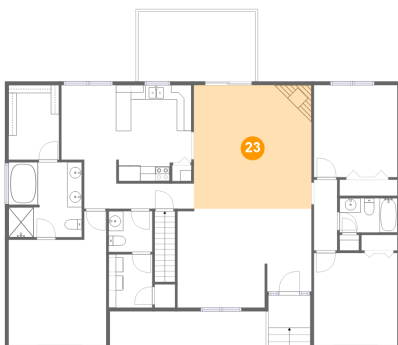
22 Floor 2 - Bedroom



Max Dimensions: 11'5" x 12'8"
Calculated Area: 144 sq. ft
Included: Yes

Heated: Yes
Finished: Yes
Enclosed: Yes
Contiguous: Yes
Permitted: Yes
Wet space: No
Addition: No
Conversion: No

23 Floor 2 - Living Room



Max Dimensions: 16'1" x 16'11"
Calculated Area: 272 sq. ft
Included: Yes

Heated: Yes
Finished: Yes
Enclosed: Yes
Contiguous: Yes
Permitted: Yes
Wet space: No
Addition: No
Conversion: No

114 Aftons Meadow Road, Vinton, Bedford County, Virginia,
United States, 24179

24 Floor 2 - Kitchen



Max Dimensions: 10'4" x 13'1"
Calculated Area: 127 sq. ft
Included: Yes

Heated: Yes
Finished: Yes
Enclosed: Yes
Contiguous: Yes
Permitted: Yes
Wet space: No
Addition: No
Conversion: No

25 Floor 2 - Hall



Max Dimensions: 3'2" x 9'8"
Calculated Area: 31 sq. ft
Included: Yes

Heated: Yes
Finished: Yes
Enclosed: Yes
Contiguous: Yes
Permitted: Yes
Wet space: No
Addition: No
Conversion: No