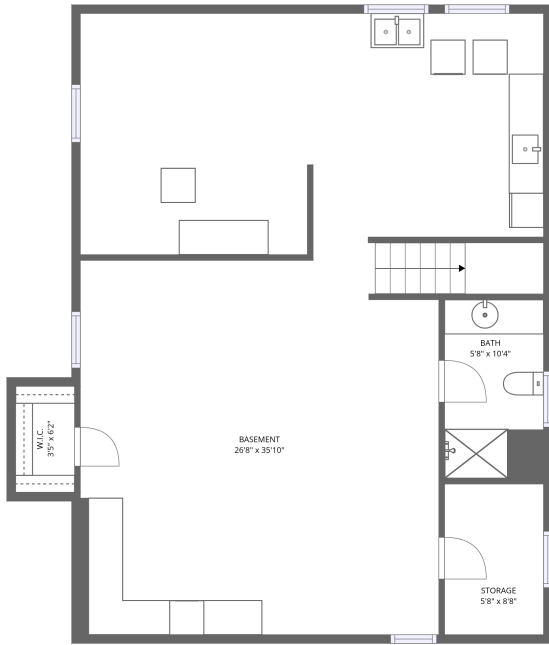
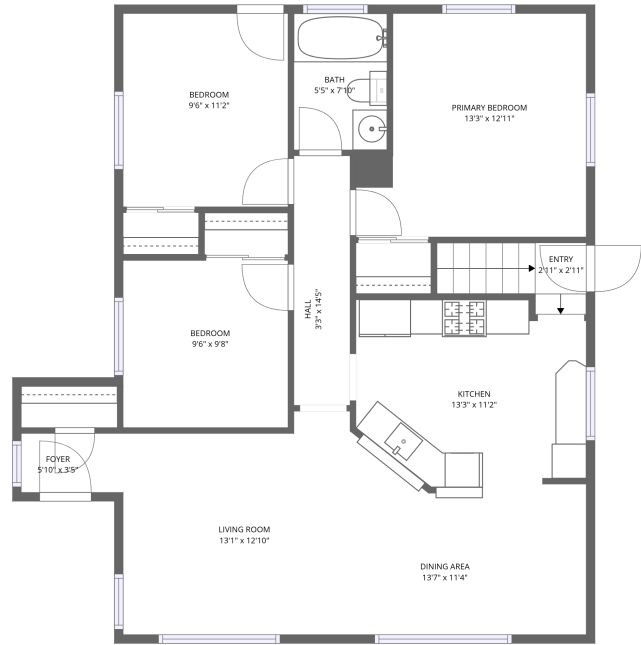


Home data report

805 Butternut Ave, Royal Oak, MI, US



1st floor



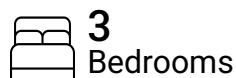
2nd floor

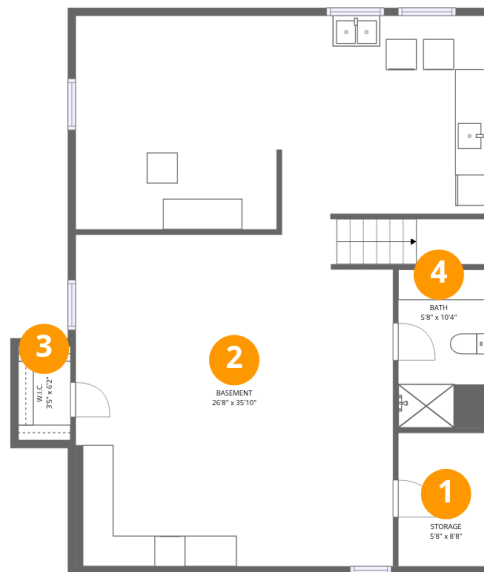
Total Area: 1081 sq. ft

1st Floor: 89 sq. ft, 2nd Floor: 992 sq. ft

Excluded: Storage 52 sq. ft, Basement 838 sq. ft, Walls: 137 sq. ft

Property summary





Room dimensions

Floor 1

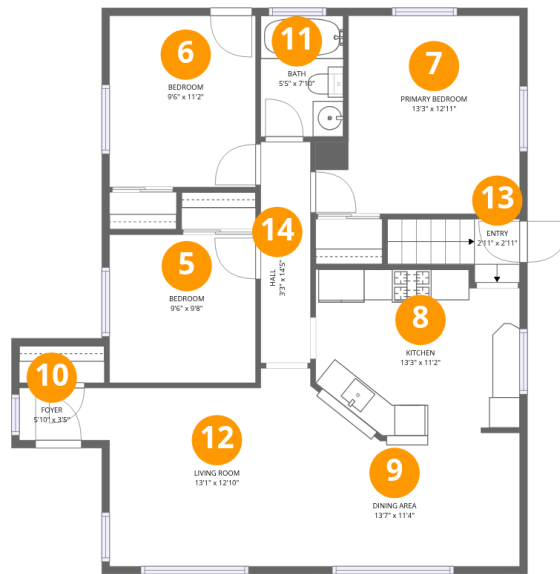
Total:89sqft

Excluded: 890sqft

#		Dimensions	sqft	Counted as living area
1	Storage	5'8" x 8'8"	50 sq. ft	No
2	Basement	26'8" x 35'10"	956 sq. ft	No
3	W.I.C.	3'5" x 6'2"	21 sq. ft	Yes
4	Bath	5'8" x 10'4"	59 sq. ft	Yes

Home data report

805 Butternut Ave, Royal Oak, MI, US



Room dimensions

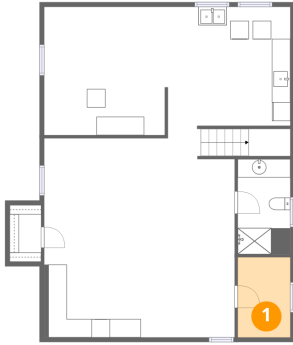
Floor 2

Total:992sqft

Excluded: 0sqft

#		Dimensions	sqft	Counted as living area
5	Bedroom	9'6" x 9'8"	91 sq. ft	Yes
6	Bedroom	9'6" x 11'2"	106 sq. ft	Yes
7	Primary Bedroom	13'3" x 12'11"	171 sq. ft	Yes
8	Kitchen	13'3" x 11'2"	148 sq. ft	Yes
9	Dining Area	13'7" x 11'4"	154 sq. ft	Yes
10	Foyer	5'10" x 3'5"	20 sq. ft	Yes
11	Bath	5'5" x 7'10"	42 sq. ft	Yes
12	Living Room	13'1" x 12'10"	168 sq. ft	Yes
13	Entry	2'11" x 2'11"	9 sq. ft	Yes
14	Hall	3'3" x 14'5"	47 sq. ft	Yes

1 Floor 1 - Storage



Dimensions: 5'8" x 8'8"
Area: 50 sq. ft
Counted as living area: No

Heated: No
Finished: No
Enclosed: No
Contiguous: Yes
Permitted: Yes
Wet space: No
Addition: No
Conversion: No

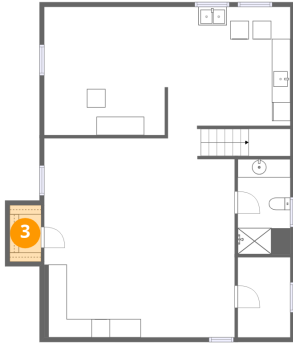
2 Floor 1 - Basement



Dimensions: 26'8" x 35'10"
Area: 956 sq. ft
Counted as living area: No

Heated: Yes
Finished: No
Enclosed: Yes
Contiguous: Yes
Permitted: Yes
Wet space: No
Addition: No
Conversion: No

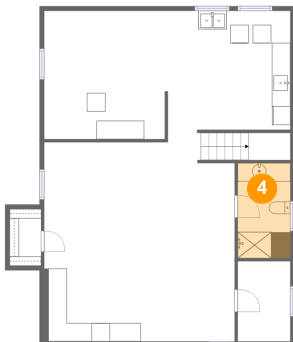
3 Floor 1 - W.I.C.



Dimensions: 3'5" x 6'2"
Area: 21 sq. ft
Counted as living area: No

Heated: Yes
Finished: Yes
Enclosed: Yes
Contiguous: No
Permitted: Yes
Wet space: No
Addition: No
Conversion: No

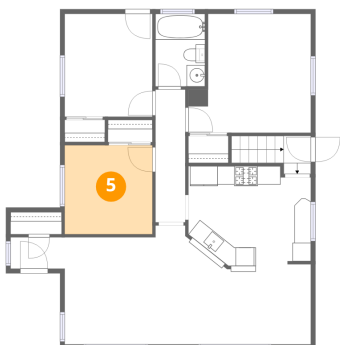
4 Floor 1 - Bath



Dimensions: 5'8" x 10'4"
Area: 59 sq. ft
Counted as living area: No

Heated: Yes
Finished: Yes
Enclosed: Yes
Contiguous: No
Permitted: Yes
Wet space: Yes
Addition: No
Conversion: No

5 Floor 2 - Bedroom



Dimensions: 9'6" x 9'8"
Area: 91 sq. ft
Counted as living area: Yes

Heated: Yes
Finished: Yes
Enclosed: Yes
Contiguous: Yes
Permitted: Yes
Wet space: No
Addition: No
Conversion: No

6 Floor 2 - Bedroom



Dimensions: 9'6" x 11'2"
Area: 106 sq. ft
Counted as living area: Yes

Heated: Yes
Finished: Yes
Enclosed: Yes
Contiguous: Yes
Permitted: Yes
Wet space: No
Addition: No
Conversion: No

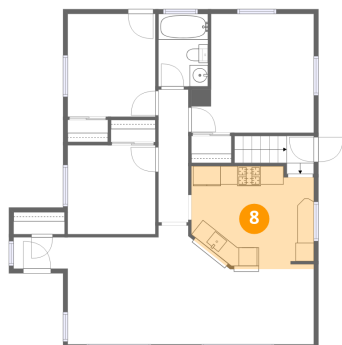
7 Floor 2 - Primary Bedroom



Dimensions: 13'3" x 12'11"
Area: 171 sq. ft
Counted as living area: Yes

Heated: Yes
Finished: Yes
Enclosed: Yes
Contiguous: Yes
Permitted: Yes
Wet space: No
Addition: No
Conversion: No

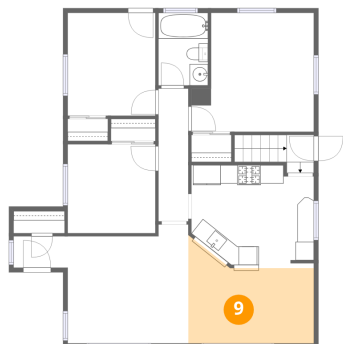
8 Floor 2 - Kitchen



Dimensions: 13'3" x 11'2"
Area: 148 sq. ft
Counted as living area: Yes

Heated: Yes
Finished: Yes
Enclosed: Yes
Contiguous: Yes
Permitted: Yes
Wet space: No
Addition: No
Conversion: No

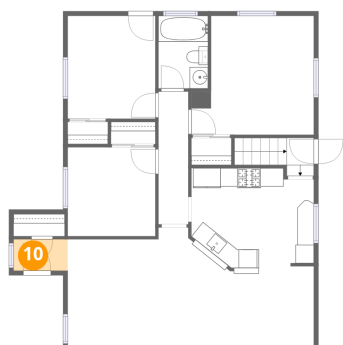
9 Floor 2 - Dining Area



Dimensions: 13'7" x 11'4"
Area: 154 sq. ft
Counted as living area: Yes

Heated: Yes
Finished: Yes
Enclosed: Yes
Contiguous: Yes
Permitted: Yes
Wet space: No
Addition: No
Conversion: No

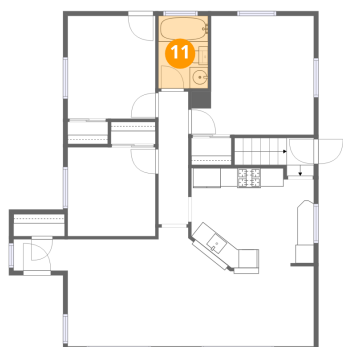
10 Floor 2 - Foyer



Dimensions: 5'10" x 3'5"
Area: 20 sq. ft
Counted as living area: Yes

Heated: Yes
Finished: Yes
Enclosed: Yes
Contiguous: Yes
Permitted: Yes
Wet space: No
Addition: No
Conversion: No

11 Floor 2 - Bath



Dimensions: 5'5" x 7'10"
Area: 42 sq. ft
Counted as living area: Yes

Heated: Yes
Finished: Yes
Enclosed: Yes
Contiguous: Yes
Permitted: Yes
Wet space: Yes
Addition: No
Conversion: No

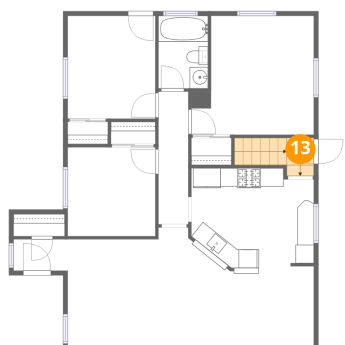
12 Floor 2 - Living Room



Dimensions: 13'1" x 12'10"
Area: 168 sq. ft
Counted as living area: Yes

Heated: Yes
Finished: Yes
Enclosed: Yes
Contiguous: Yes
Permitted: Yes
Wet space: No
Addition: No
Conversion: No

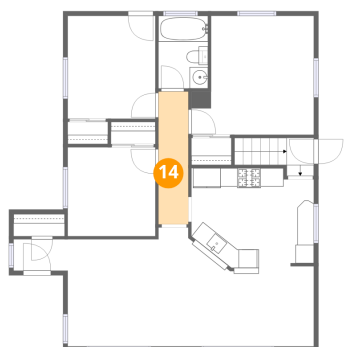
13 Floor 2 - Entry



Dimensions: 2'11" x 2'11"
Area: 9 sq. ft
Counted as living area: Yes

Heated: Yes
Finished: Yes
Enclosed: Yes
Contiguous: Yes
Permitted: Yes
Wet space: No
Addition: No
Conversion: No

14 Floor 2 - Hall



Dimensions: 3'3" x 14'5"
Area: 47 sq. ft
Counted as living area: Yes

Heated: Yes
Finished: Yes
Enclosed: Yes
Contiguous: Yes
Permitted: Yes
Wet space: No
Addition: No
Conversion: No