

Home data report

1508 River Road, North End, Manchester, Hillsborough County,  
New Hampshire, United States, 03104



**Total Area: 1738 sq. ft**  
Basement 1: 0 sq. ft, 1st Floor: 1133 sq. ft, 2nd Floor: 605 sq. ft  
Excluded: Basement 830 sq. ft, Deck 53 sq. ft, Walls: 190 sq. ft

Property summary

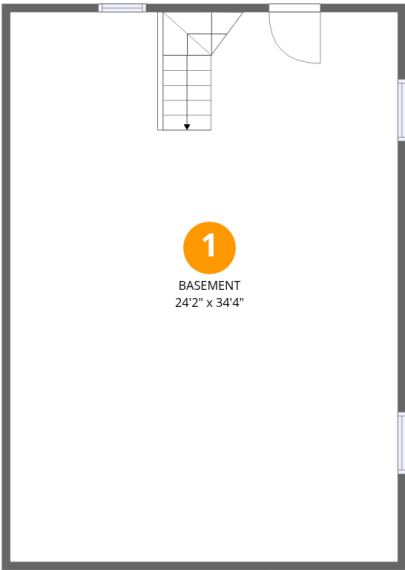
 **3** Floors

 **2** Bedrooms

 **2** Bathrooms

Home data report

1508 River Road, North End, Manchester, Hillsborough County,  
New Hampshire, United States, 03104



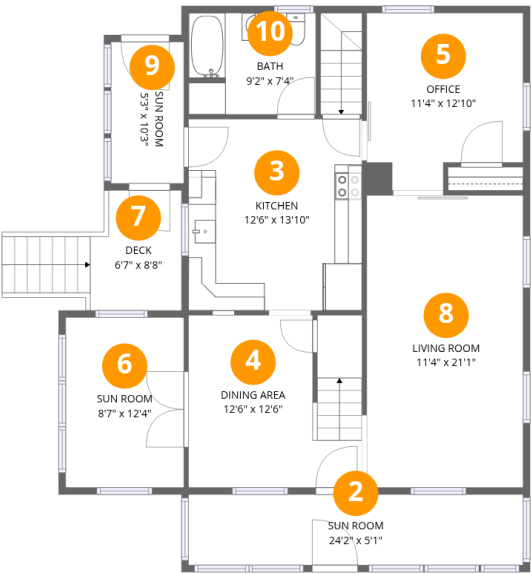
Room dimensions

Floor 1 Below grade Total:0sqft    Excluded: 830sqft

#		Dimensions	sqft	Counted as living area
1	Basement	24'2" x 34'4"	829 sq. ft	No

Home data report

1508 River Road, North End, Manchester, Hillsborough County,  
New Hampshire, United States, 03104



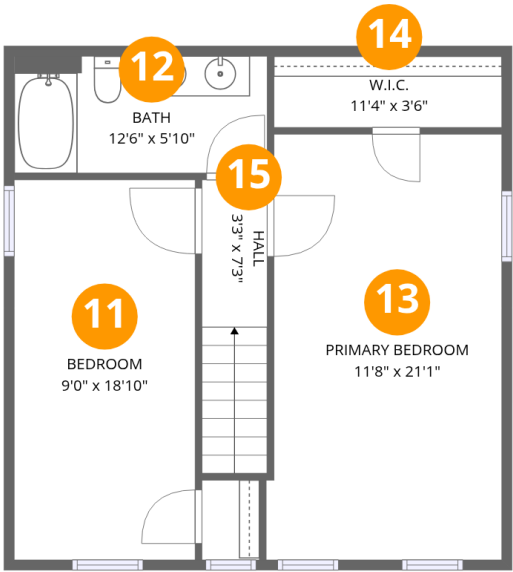
Room dimensions

Floor 2 Total:1133sqft    Excluded: 53sqft

#		Dimensions	sqft	Counted as living area
2	Sun Room	24'2" x 5'1"	124 sq. ft	Yes
3	Kitchen	12'6" x 13'10"	173 sq. ft	Yes
4	Dining Area	12'6" x 12'6"	156 sq. ft	Yes
5	Office	11'4" x 12'10"	145 sq. ft	Yes
6	Sun Room	8'7" x 12'4"	105 sq. ft	Yes
7	Deck	6'7" x 8'8"	57 sq. ft	No
8	Living Room	11'4" x 21'1"	239 sq. ft	Yes
9	Sun Room	5'3" x 10'3"	54 sq. ft	Yes
10	Bath	9'2" x 7'4"	68 sq. ft	Yes

Home data report

1508 River Road, North End, Manchester, Hillsborough County,  
New Hampshire, United States, 03104

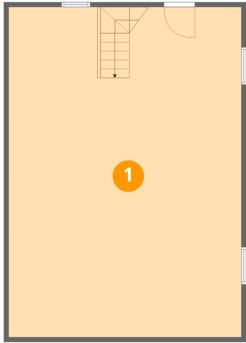


Room dimensions

Floor 3 Total:605sqft   Excluded: 0sqft

#		Dimensions	sqft	Counted as living area
11	Bedroom	9'0" x 18'10"	169 sq. ft	Yes
12	Bath	12'6" x 5'10"	73 sq. ft	Yes
13	Primary Bedroom	11'8" x 21'1"	247 sq. ft	Yes
14	W.I.C.	11'4" x 3'6"	40 sq. ft	Yes
15	Hall	3'3" x 7'3"	24 sq. ft	Yes

1 Floor 1 - Basement



Dimensions: 24'2" x 34'4"  
Area: 829 sq. ft  
Counted as living area: No

Heated: Yes  
Finished: No  
Enclosed: Yes  
Contiguous: Yes  
Permitted: Yes  
Wet space: No  
Addition: No  
Conversion: No

2 Floor 2 - Sun Room

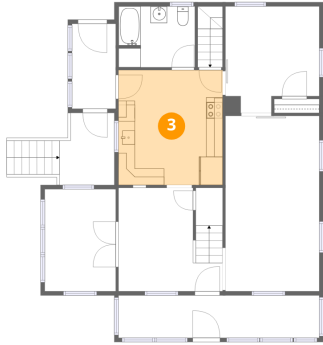


Dimensions: 24'2" x 5'1"  
Area: 124 sq. ft  
Counted as living area: Yes

Heated: Yes  
Finished: Yes  
Enclosed: Yes  
Contiguous: Yes  
Permitted: Yes  
Wet space: No  
Addition: No  
Conversion: No

1508 River Road, North End, Manchester, Hillsborough County,  
New Hampshire, United States, 03104

### 3 Floor 2 - Kitchen



Dimensions: 12'6" x 13'10"  
Area: 173 sq. ft  
Counted as living area: Yes

Heated: Yes  
Finished: Yes  
Enclosed: Yes  
Contiguous: Yes  
Permitted: Yes  
Wet space: No  
Addition: No  
Conversion: No

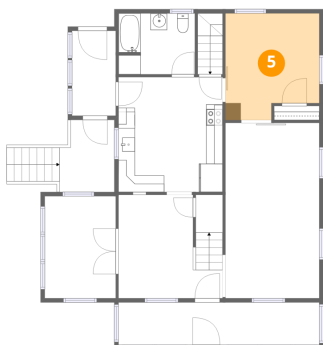
### 4 Floor 2 - Dining Area



Dimensions: 12'6" x 12'6"  
Area: 156 sq. ft  
Counted as living area: Yes

Heated: Yes  
Finished: Yes  
Enclosed: Yes  
Contiguous: Yes  
Permitted: Yes  
Wet space: No  
Addition: No  
Conversion: No

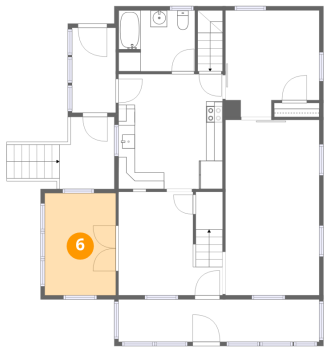
### 5 Floor 2 - Office



Dimensions: 11'4" x 12'10"  
Area: 145 sq. ft  
Counted as living area: Yes

Heated: Yes  
Finished: Yes  
Enclosed: Yes  
Contiguous: Yes  
Permitted: Yes  
Wet space: No  
Addition: No  
Conversion: No

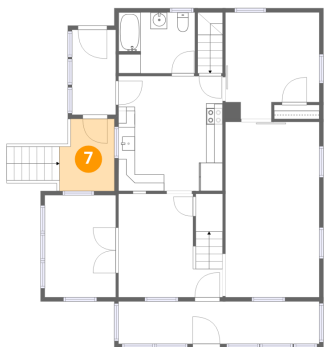
6 Floor 2 - Sun Room



Dimensions: 8'7" x 12'4"  
Area: 105 sq. ft  
Counted as living area: Yes

Heated: Yes  
Finished: Yes  
Enclosed: Yes  
Contiguous: Yes  
Permitted: Yes  
Wet space: No  
Addition: No  
Conversion: No

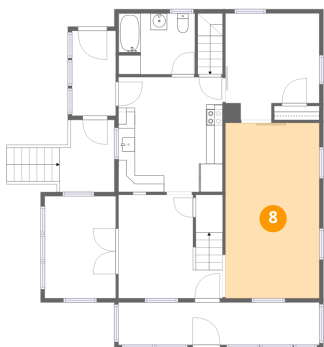
7 Floor 2 - Deck



Dimensions: 6'7" x 8'8"  
Area: 57 sq. ft  
Counted as living area: No

Heated: No  
Finished: No  
Enclosed: No  
Contiguous: Yes  
Permitted: Yes  
Wet space: No  
Addition: No  
Conversion: No

8 Floor 2 - Living Room



Dimensions: 11'4" x 21'1"  
Area: 239 sq. ft  
Counted as living area: Yes

Heated: Yes  
Finished: Yes  
Enclosed: Yes  
Contiguous: Yes  
Permitted: Yes  
Wet space: No  
Addition: No  
Conversion: No

1508 River Road, North End, Manchester, Hillsborough County,  
New Hampshire, United States, 03104

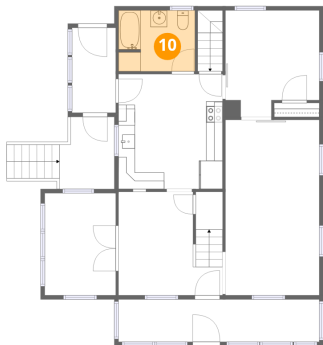
## 9 Floor 2 - Sun Room



Dimensions: 5'3" x 10'3"  
Area: 54 sq. ft  
Counted as living area: Yes

Heated: Yes  
Finished: Yes  
Enclosed: Yes  
Contiguous: Yes  
Permitted: Yes  
Wet space: No  
Addition: No  
Conversion: No

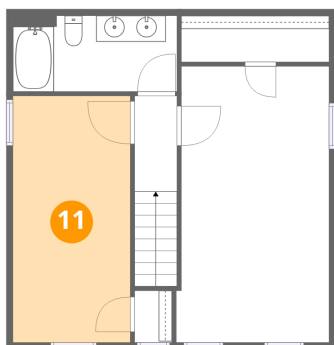
## 10 Floor 2 - Bath



Dimensions: 9'2" x 7'4"  
Area: 68 sq. ft  
Counted as living area: Yes

Heated: Yes  
Finished: Yes  
Enclosed: Yes  
Contiguous: Yes  
Permitted: Yes  
Wet space: Yes  
Addition: No  
Conversion: No

## 11 Floor 3 - Bedroom

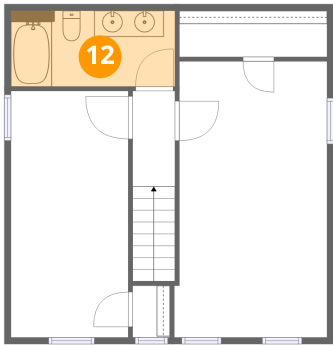


Dimensions: 9'0" x 18'10"  
Area: 169 sq. ft  
Counted as living area: Yes

Heated: Yes  
Finished: Yes  
Enclosed: Yes  
Contiguous: Yes  
Permitted: Yes  
Wet space: No  
Addition: No  
Conversion: No



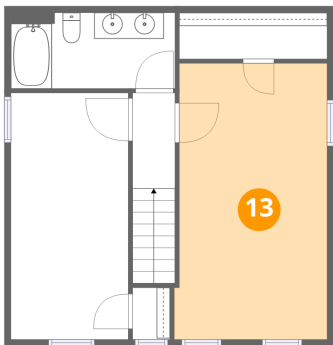
12 Floor 3 - Bath



Dimensions: 12'6" x 5'10"  
Area: 73 sq. ft  
Counted as living area: Yes

Heated: Yes  
Finished: Yes  
Enclosed: Yes  
Contiguous: Yes  
Permitted: Yes  
Wet space: Yes  
Addition: No  
Conversion: No

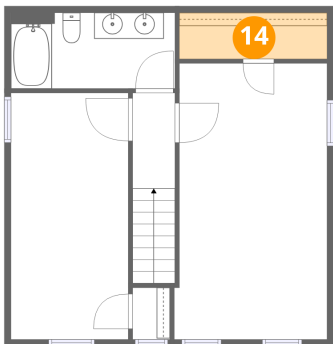
13 Floor 3 - Primary Bedroom



Dimensions: 11'8" x 21'1"  
Area: 247 sq. ft  
Counted as living area: Yes

Heated: Yes  
Finished: Yes  
Enclosed: Yes  
Contiguous: Yes  
Permitted: Yes  
Wet space: No  
Addition: No  
Conversion: No

14 Floor 3 - W.I.C.

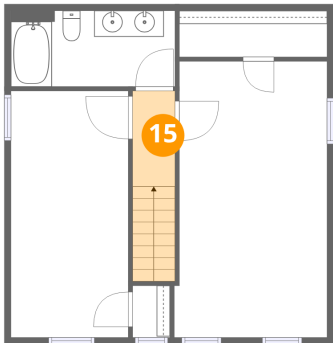


Dimensions: 11'4" x 3'6"  
Area: 40 sq. ft  
Counted as living area: Yes

Heated: Yes  
Finished: Yes  
Enclosed: Yes  
Contiguous: Yes  
Permitted: Yes  
Wet space: No  
Addition: No  
Conversion: No

1508 River Road, North End, Manchester, Hillsborough County,  
New Hampshire, United States, 03104

15 Floor 3 - Hall



Dimensions: 3'3" x 7'3"  
Area: 24 sq. ft  
Counted as living area: Yes

Heated: Yes  
Finished: Yes  
Enclosed: Yes  
Contiguous: Yes  
Permitted: Yes  
Wet space: No  
Addition: No  
Conversion: No