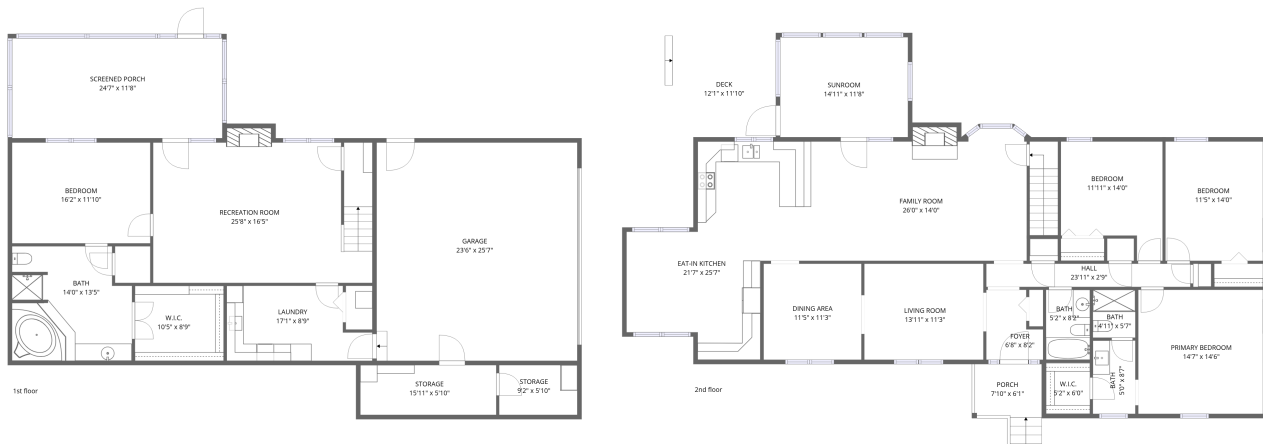


Home data report

4189 Toddsbury Drive, Vinton, Virginia 24179, United States



Total Area: 3019 sq. ft

1st Floor: 1065 sq. ft, 2nd Floor: 1954 sq. ft

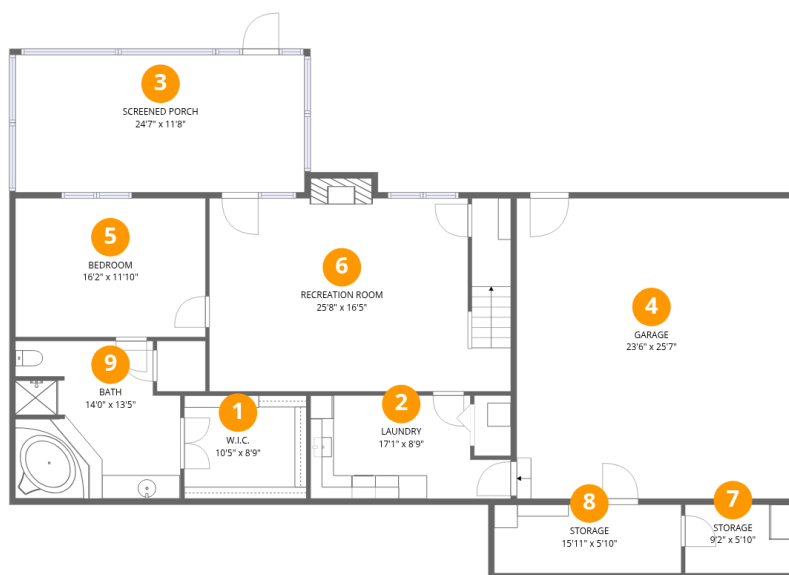
Excluded: Storage 148 sq. ft, Garage 600 sq. ft, Undefined 16 sq. ft, Screened porch 289 sq. ft, Fireplace 17 sq. ft, Sunroom 175 sq. ft, Porch 59 sq. ft, Deck 149 sq. ft, Embedded window 10 sq. ft, Walls: 269 sq. ft

Property summary



Home data report

4189 Toddsbury Drive, Vinton, Virginia 24179, United States

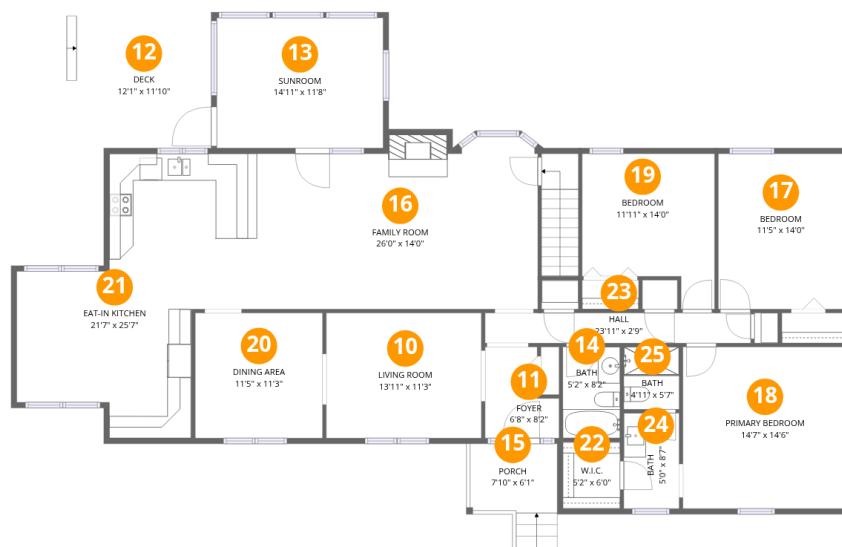


Room dimensions

Floor 1

Total:1065sqft Excluded: 1063sqft

#		Dimensions	sqft	Counted as living area
1	W.I.C.	10'5" x 8'9"	91 sq. ft	Yes
2	Laundry	17'1" x 8'9"	149 sq. ft	Yes
3	Screened Porch	24'7" x 11'8"	287 sq. ft	No
4	Garage	23'6" x 25'7"	600 sq. ft	No
5	Bedroom	16'2" x 11'10"	191 sq. ft	Yes
6	Recreation Room	25'8" x 16'5"	421 sq. ft	Yes
7	Storage	9'2" x 5'10"	53 sq. ft	No
8	Storage	15'11" x 5'10"	93 sq. ft	No
9	Bath	14'0" x 13'5"	188 sq. ft	Yes



Room dimensions

Floor 2

Total:1954sqft Excluded: 400sqft

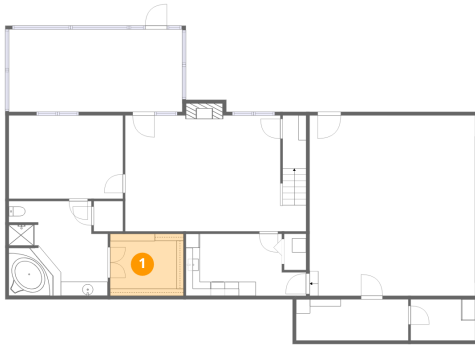
#		Dimensions	sqft	Counted as living area
10	Living Room	13'11" x 11'3"	157 sq. ft	Yes
11	Foyer	6'8" x 8'2"	55 sq. ft	Yes
12	Deck	12'1" x 11'10"	142 sq. ft	No
13	Sunroom	14'11" x 11'8"	175 sq. ft	No
14	Bath	5'2" x 8'2"	42 sq. ft	Yes
15	Porch	7'10" x 6'1"	48 sq. ft	No
16	Family Room	26'0" x 14'0"	364 sq. ft	Yes
17	Bedroom	11'5" x 14'0"	159 sq. ft	Yes
18	Primary Bedroom	14'7" x 14'6"	212 sq. ft	Yes
19	Bedroom	11'11" x 14'0"	166 sq. ft	Yes
20	Dining Area	11'5" x 11'3"	129 sq. ft	Yes

Home data report

4189 Toddsbury Drive, Vinton, Virginia 24179, United States

#		Dimensions	sqft	Counted as living area
21	Eat-in Kitchen	21'7" x 25'7"	551 sq. ft	Yes
22	W.I.C.	5'2" x 6'0"	31 sq. ft	Yes
23	Hall	23'11" x 2'9"	65 sq. ft	Yes
24	Bath	5'0" x 8'7"	43 sq. ft	Yes
25	Bath	4'11" x 5'7"	28 sq. ft	Yes

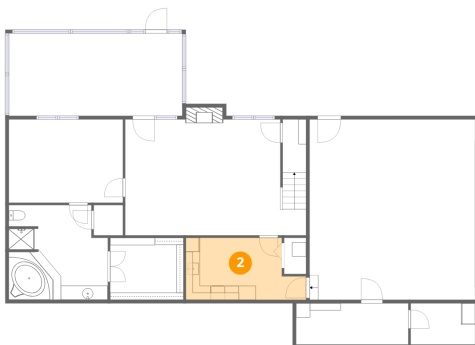
1 Floor 1 - W.I.C.



Dimensions: 10'5" x 8'9"
Area: 91 sq. ft
Counted as living area: Yes

Heated: Yes
Finished: Yes
Enclosed: Yes
Contiguous: Yes
Permitted: Yes
Wet space: No
Addition: No
Conversion: No

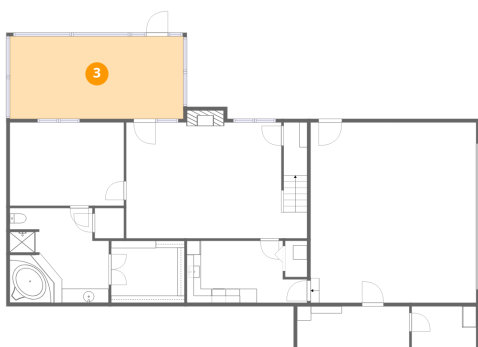
2 Floor 1 - Laundry



Dimensions: 17'1" x 8'9"
Area: 149 sq. ft
Counted as living area: Yes

Heated: Yes
Finished: Yes
Enclosed: Yes
Contiguous: Yes
Permitted: Yes
Wet space: No
Addition: No
Conversion: No

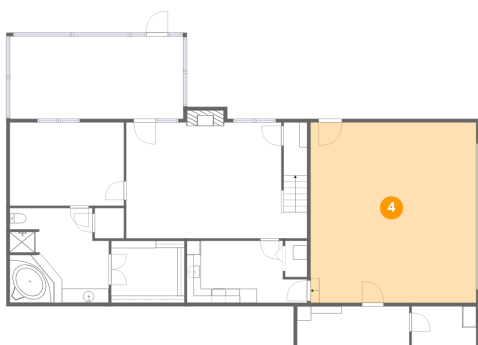
3 Floor 1 - Screened Porch



Dimensions: 24'7" x 11'8"
Area: 287 sq. ft
Counted as living area: No

Heated: No
Finished: No
Enclosed: No
Contiguous: Yes
Permitted: Yes
Wet space: No
Addition: No
Conversion: No

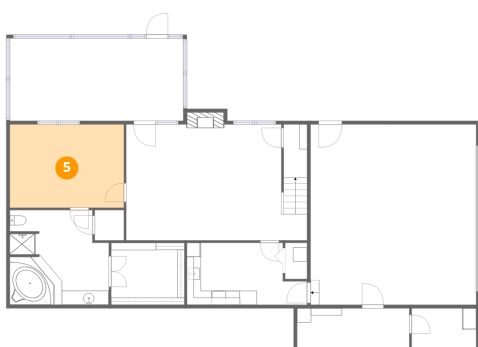
4 Floor 1 - Garage



Dimensions: 23'6" x 25'7"
Area: 600 sq. ft
Counted as living area: No

Heated: No
Finished: No
Enclosed: Yes
Contiguous: Yes
Permitted: Yes
Wet space: No
Addition: No
Conversion: No

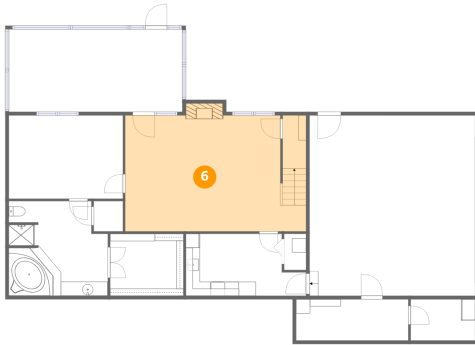
5 Floor 1 - Bedroom



Dimensions: 16'2" x 11'10"
Area: 191 sq. ft
Counted as living area: Yes

Heated: Yes
Finished: Yes
Enclosed: Yes
Contiguous: Yes
Permitted: Yes
Wet space: No
Addition: No
Conversion: No

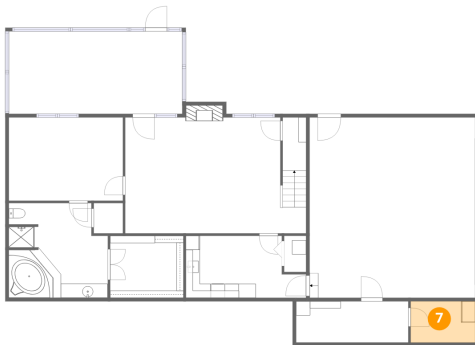
6 Floor 1 - Recreation Room



Dimensions: 25'8" x 16'5"
Area: 421 sq. ft
Counted as living area: Yes

Heated: Yes
Finished: Yes
Enclosed: Yes
Contiguous: Yes
Permitted: Yes
Wet space: No
Addition: No
Conversion: No

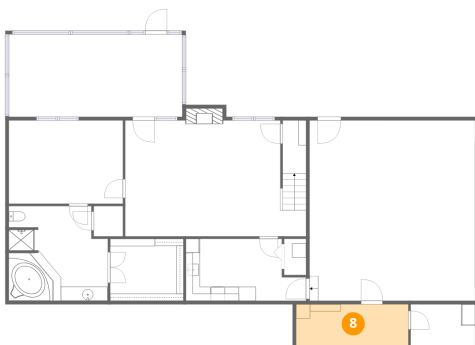
7 Floor 1 - Storage



Dimensions: 9'2" x 5'10"
Area: 53 sq. ft
Counted as living area: No

Heated: No
Finished: No
Enclosed: No
Contiguous: Yes
Permitted: Yes
Wet space: No
Addition: No
Conversion: No

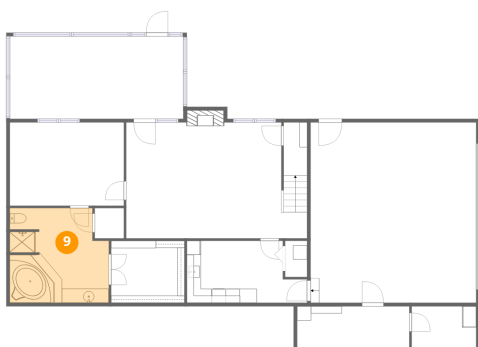
8 Floor 1 - Storage



Dimensions: 15'11" x 5'10"
Area: 93 sq. ft
Counted as living area: No

Heated: No
Finished: No
Enclosed: No
Contiguous: Yes
Permitted: Yes
Wet space: No
Addition: No
Conversion: No

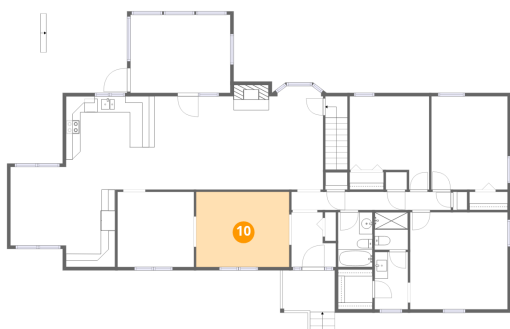
9 Floor 1 - Bath



Dimensions: 14'0" x 13'5"
Area: 188 sq. ft
Counted as living area: Yes

Heated: Yes
Finished: Yes
Enclosed: Yes
Contiguous: Yes
Permitted: Yes
Wet space: Yes
Addition: No
Conversion: No

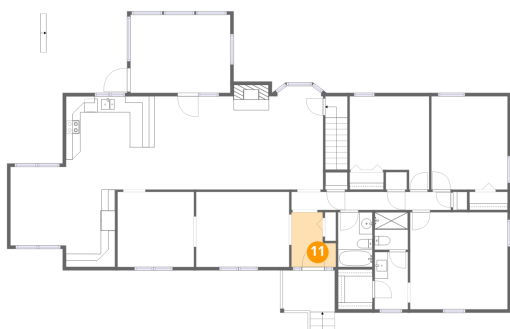
10 Floor 2 - Living Room



Dimensions: 13'11" x 11'3"
Area: 157 sq. ft
Counted as living area: Yes

Heated: Yes
Finished: Yes
Enclosed: Yes
Contiguous: Yes
Permitted: Yes
Wet space: No
Addition: No
Conversion: No

11 Floor 2 - Foyer



Dimensions: 6'8" x 8'2"
Area: 55 sq. ft
Counted as living area: Yes

Heated: Yes
Finished: Yes
Enclosed: Yes
Contiguous: Yes
Permitted: Yes
Wet space: No
Addition: No
Conversion: No

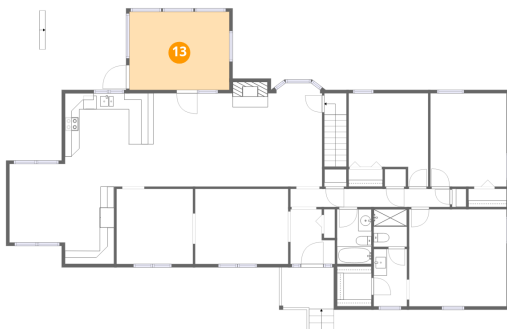
12 Floor 2 - Deck



Dimensions: 12'1" x 11'10"
Area: 142 sq. ft
Counted as living area: No

Heated: No
Finished: No
Enclosed: No
Contiguous: Yes
Permitted: Yes
Wet space: No
Addition: No
Conversion: No

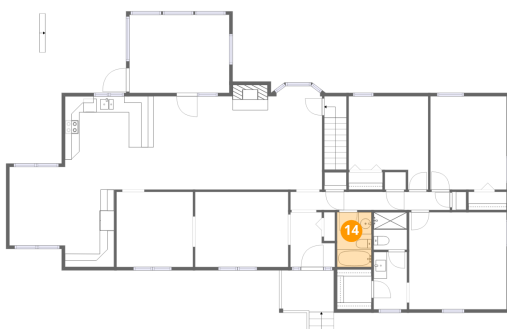
13 Floor 2 - Sunroom



Dimensions: 14'11" x 11'8"
Area: 175 sq. ft
Counted as living area: No

Heated: No
Finished: No
Enclosed: No
Contiguous: Yes
Permitted: Yes
Wet space: No
Addition: No
Conversion: No

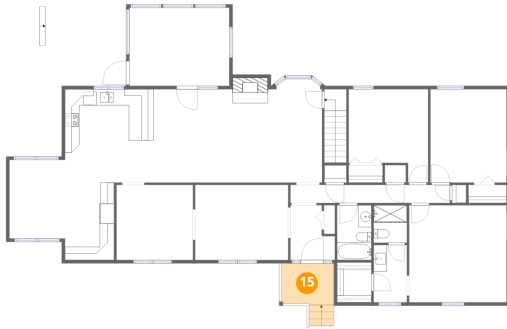
14 Floor 2 - Bath



Dimensions: 5'2" x 8'2"
Area: 42 sq. ft
Counted as living area: Yes

Heated: Yes
Finished: Yes
Enclosed: Yes
Contiguous: Yes
Permitted: Yes
Wet space: Yes
Addition: No
Conversion: No

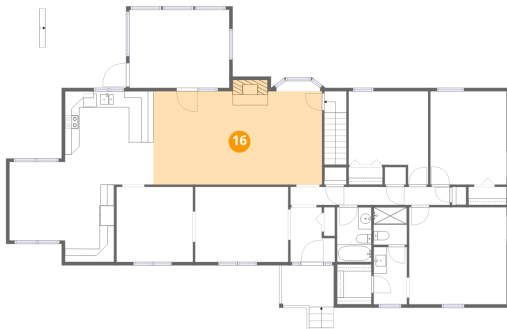
15 Floor 2 - Porch



Dimensions: 7'10" x 6'1"
Area: 48 sq. ft
Counted as living area: No

Heated: No
Finished: No
Enclosed: No
Contiguous: Yes
Permitted: Yes
Wet space: No
Addition: No
Conversion: No

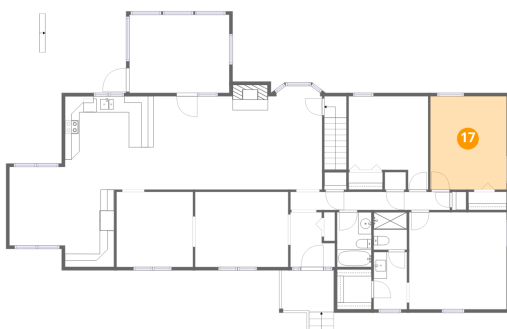
16 Floor 2 - Family Room



Dimensions: 26'0" x 14'0"
Area: 364 sq. ft
Counted as living area: Yes

Heated: Yes
Finished: Yes
Enclosed: Yes
Contiguous: Yes
Permitted: Yes
Wet space: No
Addition: No
Conversion: No

17 Floor 2 - Bedroom



Dimensions: 11'5" x 14'0"
Area: 159 sq. ft
Counted as living area: Yes

Heated: Yes
Finished: Yes
Enclosed: Yes
Contiguous: Yes
Permitted: Yes
Wet space: No
Addition: No
Conversion: No

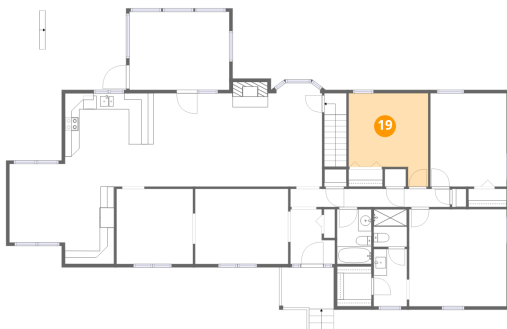
18 Floor 2 - Primary Bedroom



Dimensions: 14'7" x 14'6"
Area: 212 sq. ft
Counted as living area: Yes

Heated: Yes
Finished: Yes
Enclosed: Yes
Contiguous: Yes
Permitted: Yes
Wet space: No
Addition: No
Conversion: No

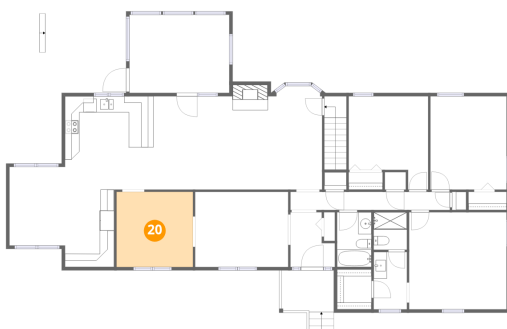
19 Floor 2 - Bedroom



Dimensions: 11'11" x 14'0"
Area: 166 sq. ft
Counted as living area: Yes

Heated: Yes
Finished: Yes
Enclosed: Yes
Contiguous: Yes
Permitted: Yes
Wet space: No
Addition: No
Conversion: No

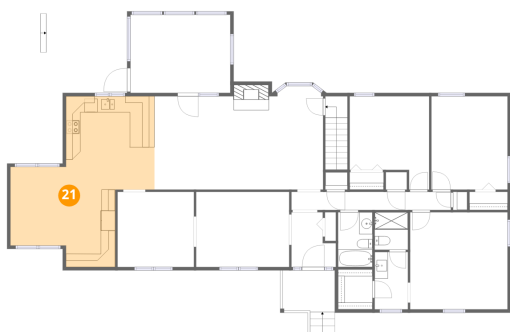
20 Floor 2 - Dining Area



Dimensions: 11'5" x 11'3"
Area: 129 sq. ft
Counted as living area: Yes

Heated: Yes
Finished: Yes
Enclosed: Yes
Contiguous: Yes
Permitted: Yes
Wet space: No
Addition: No
Conversion: No

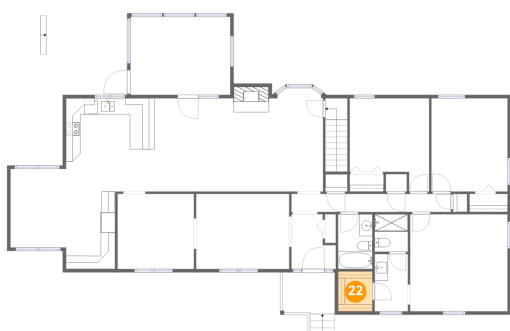
21 Floor 2 - Eat-in Kitchen



Dimensions: 21'7" x 25'7"
Area: 551 sq. ft
Counted as living area: Yes

Heated: Yes
Finished: Yes
Enclosed: Yes
Contiguous: Yes
Permitted: Yes
Wet space: No
Addition: No
Conversion: No

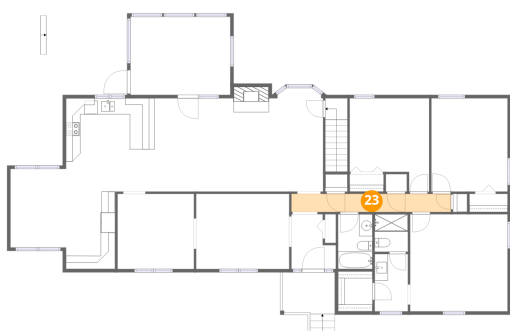
22 Floor 2 - W.I.C.



Dimensions: 5'2" x 6'0"
Area: 31 sq. ft
Counted as living area: Yes

Heated: Yes
Finished: Yes
Enclosed: Yes
Contiguous: Yes
Permitted: Yes
Wet space: No
Addition: No
Conversion: No

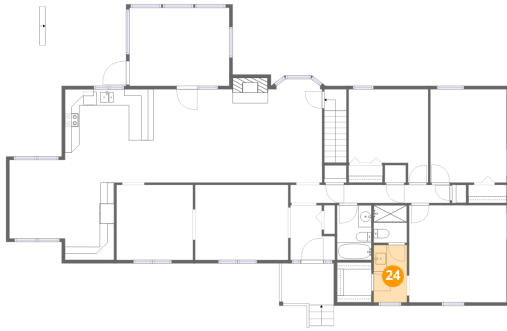
23 Floor 2 - Hall



Dimensions: 23'11" x 2'9"
Area: 65 sq. ft
Counted as living area: Yes

Heated: Yes
Finished: Yes
Enclosed: Yes
Contiguous: Yes
Permitted: Yes
Wet space: No
Addition: No
Conversion: No

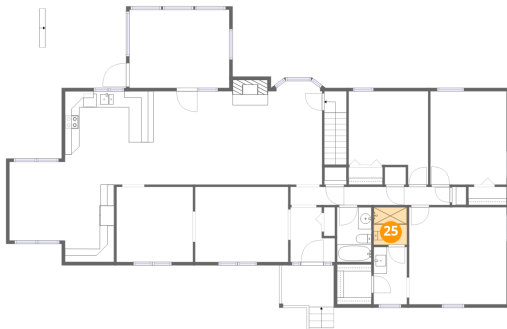
24 Floor 2 - Bath



Dimensions: 5'0" x 8'7"
Area: 43 sq. ft
Counted as living area: Yes

Heated: Yes
Finished: Yes
Enclosed: Yes
Contiguous: Yes
Permitted: Yes
Wet space: Yes
Addition: No
Conversion: No

25 Floor 2 - Bath



Dimensions: 4'11" x 5'7"
Area: 28 sq. ft
Counted as living area: Yes

Heated: Yes
Finished: Yes
Enclosed: Yes
Contiguous: Yes
Permitted: Yes
Wet space: Yes
Addition: No
Conversion: No