

Home data report

6567 Fairway Estates Drive, Fairway Forest, Roanoke, Roanoke County, Virginia, United States, 24018



**Total Area: 2377 sq. ft**

1st Floor: 1744 sq. ft, 2nd Floor: 633 sq. ft

Excluded: Porch 42 sq. ft, Garage 467 sq. ft, Open to below 68 sq. ft, Low ceiling 575 sq. ft, Attic 324 sq. ft, Walls: 238 sq. ft

Property summary

**2**  
Floors

**3**  
Bedrooms

**2**  
Bathrooms

Home data report

**6567 Fairway Estates Drive, Fairway Forest, Roanoke, Roanoke County, Virginia, United States, 24018**

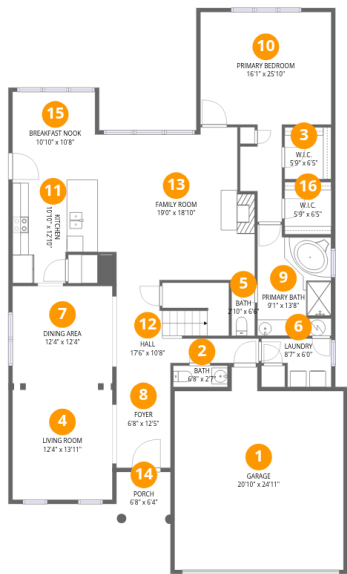


**1**  
Half baths



**1**  
Garages

6567 Fairway Estates Drive, Fairway Forest, Roanoke, Roanoke County, Virginia, United States, 24018



Room dimensions

Floor 1 Total:1744sqft    Excluded: 509sqft

#		Dimensions	sqft	Counted as living area
1	Garage	20'10" x 24'11"	519 sq. ft	No
2	Bath	6'8" x 2'7"	18 sq. ft	Yes
3	W.I.C.	5'9" x 6'5"	37 sq. ft	Yes
4	Living Room	12'4" x 13'11"	171 sq. ft	Yes
5	Bath	2'10" x 6'6"	19 sq. ft	Yes
6	Laundry	8'7" x 6'0"	51 sq. ft	Yes
7	Dining Area	12'4" x 12'4"	152 sq. ft	Yes
8	Foyer	6'8" x 12'5"	83 sq. ft	Yes
9	Primary Bath	9'1" x 13'8"	124 sq. ft	Yes
10	Primary Bedroom	16'1" x 25'10"	416 sq. ft	Yes
11	Kitchen	10'10" x 12'10"	139 sq. ft	Yes

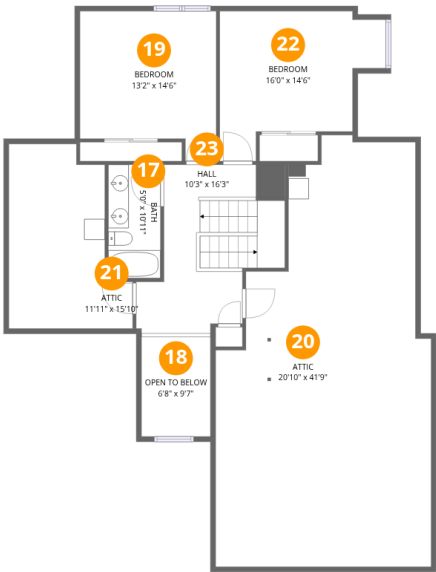
## Home data report

**6567 Fairway Estates Drive, Fairway Forest, Roanoke, Roanoke County, Virginia, United States, 24018**

#		Dimensions	sqft	Counted as living area
12	Hall	17'6" x 10'8"	187 sq. ft	Yes
13	Family Room	19'0" x 18'10"	357 sq. ft	Yes
14	Porch	6'8" x 6'4"	42 sq. ft	No
15	Breakfast Nook	10'10" x 10'8"	116 sq. ft	Yes
16	W.I.C.	5'9" x 6'5"	37 sq. ft	Yes

Home data report

6567 Fairway Estates Drive, Fairway Forest, Roanoke, Roanoke County, Virginia, United States, 24018



Room dimensions

Floor 2 Total:633sqft Excluded: 967sqft

#		Dimensions	sqft	Counted as living area
17	Bath	5'0" x 10'11"	55 sq. ft	Yes
18	Open To Below	6'8" x 9'7"	64 sq. ft	No
19	Bedroom	13'2" x 14'6"	190 sq. ft	Yes
20	Attic	20'10" x 41'9"	868 sq. ft	No
21	Attic	11'11" x 15'10"	189 sq. ft	No
22	Bedroom	16'0" x 14'6"	232 sq. ft	Yes
23	Hall	10'3" x 16'3"	167 sq. ft	Yes

1 Floor 1 - Garage



Dimensions: 20'10" x 24'11"  
Area: 519 sq. ft  
Counted as living area: No

Heated: No  
Finished: No  
Enclosed: Yes  
Contiguous: Yes  
Permitted: Yes  
Wet space: No  
Addition: No  
Conversion: No

2 Floor 1 - Bath



Dimensions: 6'8" x 2'7"  
Area: 18 sq. ft  
Counted as living area: Yes

Heated: Yes  
Finished: Yes  
Enclosed: Yes  
Contiguous: Yes  
Permitted: Yes  
Wet space: Yes  
Addition: No  
Conversion: No

## Home data report

6567 Fairway Estates Drive, Fairway Forest, Roanoke, Roanoke County, Virginia, United States, 24018

### 3 Floor 1 - W.I.C.



Dimensions: 5'9" x 6'5"  
Area: 37 sq. ft  
Counted as living area: Yes

Heated: Yes  
Finished: Yes  
Enclosed: Yes  
Contiguous: Yes  
Permitted: Yes  
Wet space: No  
Addition: No  
Conversion: No

### 4 Floor 1 - Living Room



Dimensions: 12'4" x 13'11"  
Area: 171 sq. ft  
Counted as living area: Yes

Heated: Yes  
Finished: Yes  
Enclosed: Yes  
Contiguous: Yes  
Permitted: Yes  
Wet space: No  
Addition: No  
Conversion: No

### 5 Floor 1 - Bath



Dimensions: 2'10" x 6'6"  
Area: 19 sq. ft  
Counted as living area: Yes

Heated: Yes  
Finished: Yes  
Enclosed: Yes  
Contiguous: Yes  
Permitted: Yes  
Wet space: Yes  
Addition: No  
Conversion: No

6567 Fairway Estates Drive, Fairway Forest, Roanoke, Roanoke County, Virginia, United States, 24018

## 6 Floor 1 - Laundry



Dimensions: 8'7" x 6'0"  
Area: 51 sq. ft  
Counted as living area: Yes

Heated: Yes  
Finished: Yes  
Enclosed: Yes  
Contiguous: Yes  
Permitted: Yes  
Wet space: No  
Addition: No  
Conversion: No

## 7 Floor 1 - Dining Area



Dimensions: 12'4" x 12'4"  
Area: 152 sq. ft  
Counted as living area: Yes

Heated: Yes  
Finished: Yes  
Enclosed: Yes  
Contiguous: Yes  
Permitted: Yes  
Wet space: No  
Addition: No  
Conversion: No

## 8 Floor 1 - Foyer



Dimensions: 6'8" x 12'5"  
Area: 83 sq. ft  
Counted as living area: Yes

Heated: Yes  
Finished: Yes  
Enclosed: Yes  
Contiguous: Yes  
Permitted: Yes  
Wet space: No  
Addition: No  
Conversion: No



6567 Fairway Estates Drive, Fairway Forest, Roanoke, Roanoke County, Virginia, United States, 24018

## 9 Floor 1 - Primary Bath



Dimensions: 9'1" x 13'8"  
Area: 124 sq. ft  
Counted as living area: Yes

Heated: Yes  
Finished: Yes  
Enclosed: Yes  
Contiguous: Yes  
Permitted: Yes  
Wet space: Yes  
Addition: No  
Conversion: No

## 10 Floor 1 - Primary Bedroom



Dimensions: 16'1" x 25'10"  
Area: 416 sq. ft  
Counted as living area: Yes

Heated: Yes  
Finished: Yes  
Enclosed: Yes  
Contiguous: Yes  
Permitted: Yes  
Wet space: No  
Addition: No  
Conversion: No

## 11 Floor 1 - Kitchen



Dimensions: 10'10" x 12'10"  
Area: 139 sq. ft  
Counted as living area: Yes

Heated: Yes  
Finished: Yes  
Enclosed: Yes  
Contiguous: Yes  
Permitted: Yes  
Wet space: No  
Addition: No  
Conversion: No

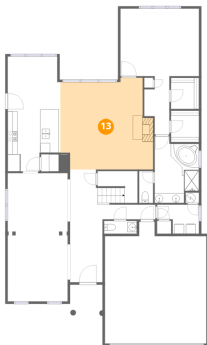
12 Floor 1 - Hall



Dimensions: 17'6" x 10'8"  
Area: 187 sq. ft  
Counted as living area: Yes

Heated: Yes  
Finished: Yes  
Enclosed: Yes  
Contiguous: Yes  
Permitted: Yes  
Wet space: No  
Addition: No  
Conversion: No

13 Floor 1 - Family Room



Dimensions: 19'0" x 18'10"  
Area: 357 sq. ft  
Counted as living area: Yes

Heated: Yes  
Finished: Yes  
Enclosed: Yes  
Contiguous: Yes  
Permitted: Yes  
Wet space: No  
Addition: No  
Conversion: No

14 Floor 1 - Porch

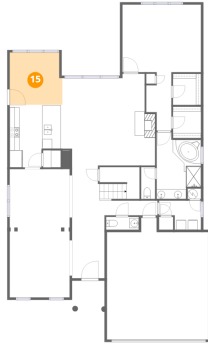


Dimensions: 6'8" x 6'4"  
Area: 42 sq. ft  
Counted as living area: No

Heated: No  
Finished: No  
Enclosed: No  
Contiguous: Yes  
Permitted: Yes  
Wet space: No  
Addition: No  
Conversion: No

6567 Fairway Estates Drive, Fairway Forest, Roanoke, Roanoke County, Virginia, United States, 24018

### 15 Floor 1 - Breakfast Nook



Dimensions: 10'10" x 10'8"  
Area: 116 sq. ft  
Counted as living area: Yes

Heated: Yes  
Finished: Yes  
Enclosed: Yes  
Contiguous: Yes  
Permitted: Yes  
Wet space: No  
Addition: No  
Conversion: No

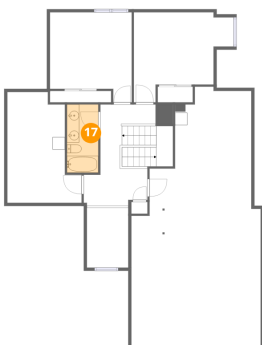
### 16 Floor 1 - W.I.C.



Dimensions: 5'9" x 6'5"  
Area: 37 sq. ft  
Counted as living area: Yes

Heated: Yes  
Finished: Yes  
Enclosed: Yes  
Contiguous: Yes  
Permitted: Yes  
Wet space: No  
Addition: No  
Conversion: No

### 17 Floor 2 - Bath

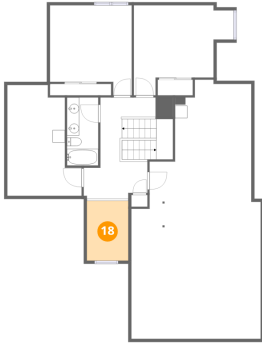


Dimensions: 5'0" x 10'11"  
Area: 55 sq. ft  
Counted as living area: Yes

Heated: Yes  
Finished: Yes  
Enclosed: Yes  
Contiguous: Yes  
Permitted: Yes  
Wet space: Yes  
Addition: No  
Conversion: No

6567 Fairway Estates Drive, Fairway Forest, Roanoke, Roanoke County, Virginia, United States, 24018

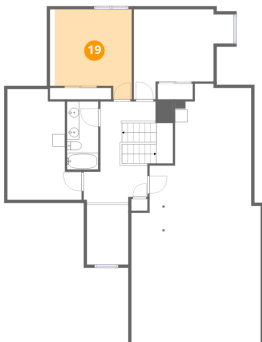
### 18 Floor 2 - Open To Below



Dimensions: 6'8" x 9'7"  
Area: 64 sq. ft  
Counted as living area: No

Heated: No  
Finished: No  
Enclosed: No  
Contiguous: Yes  
Permitted: No  
Wet space: No  
Addition: No  
Conversion: No

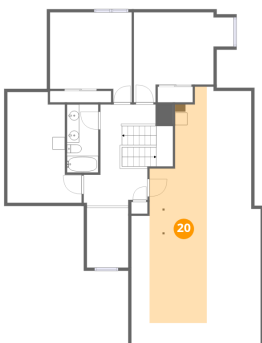
### 19 Floor 2 - Bedroom



Dimensions: 13'2" x 14'6"  
Area: 190 sq. ft  
Counted as living area: Yes

Heated: Yes  
Finished: Yes  
Enclosed: Yes  
Contiguous: Yes  
Permitted: Yes  
Wet space: No  
Addition: No  
Conversion: No

### 20 Floor 2 - Attic

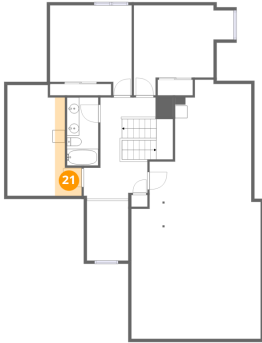


Dimensions: 20'10" x 41'9"  
Area: 868 sq. ft  
Counted as living area: No

Heated: No  
Finished: No  
Enclosed: Yes  
Contiguous: Yes  
Permitted: Yes  
Wet space: No  
Addition: No  
Conversion: No

6567 Fairway Estates Drive, Fairway Forest, Roanoke, Roanoke County, Virginia, United States, 24018

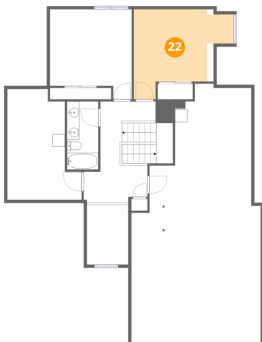
## 21 Floor 2 - Attic



Dimensions: 11'11" x 15'10"  
Area: 189 sq. ft  
Counted as living area: No

Heated: No  
Finished: No  
Enclosed: Yes  
Contiguous: Yes  
Permitted: Yes  
Wet space: No  
Addition: No  
Conversion: No

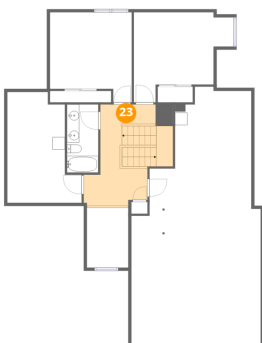
## 22 Floor 2 - Bedroom



Dimensions: 16'0" x 14'6"  
Area: 232 sq. ft  
Counted as living area: Yes

Heated: Yes  
Finished: Yes  
Enclosed: Yes  
Contiguous: Yes  
Permitted: Yes  
Wet space: No  
Addition: No  
Conversion: No

## 23 Floor 2 - Hall



Dimensions: 10'3" x 16'3"  
Area: 167 sq. ft  
Counted as living area: Yes

Heated: Yes  
Finished: Yes  
Enclosed: Yes  
Contiguous: Yes  
Permitted: Yes  
Wet space: No  
Addition: No  
Conversion: No