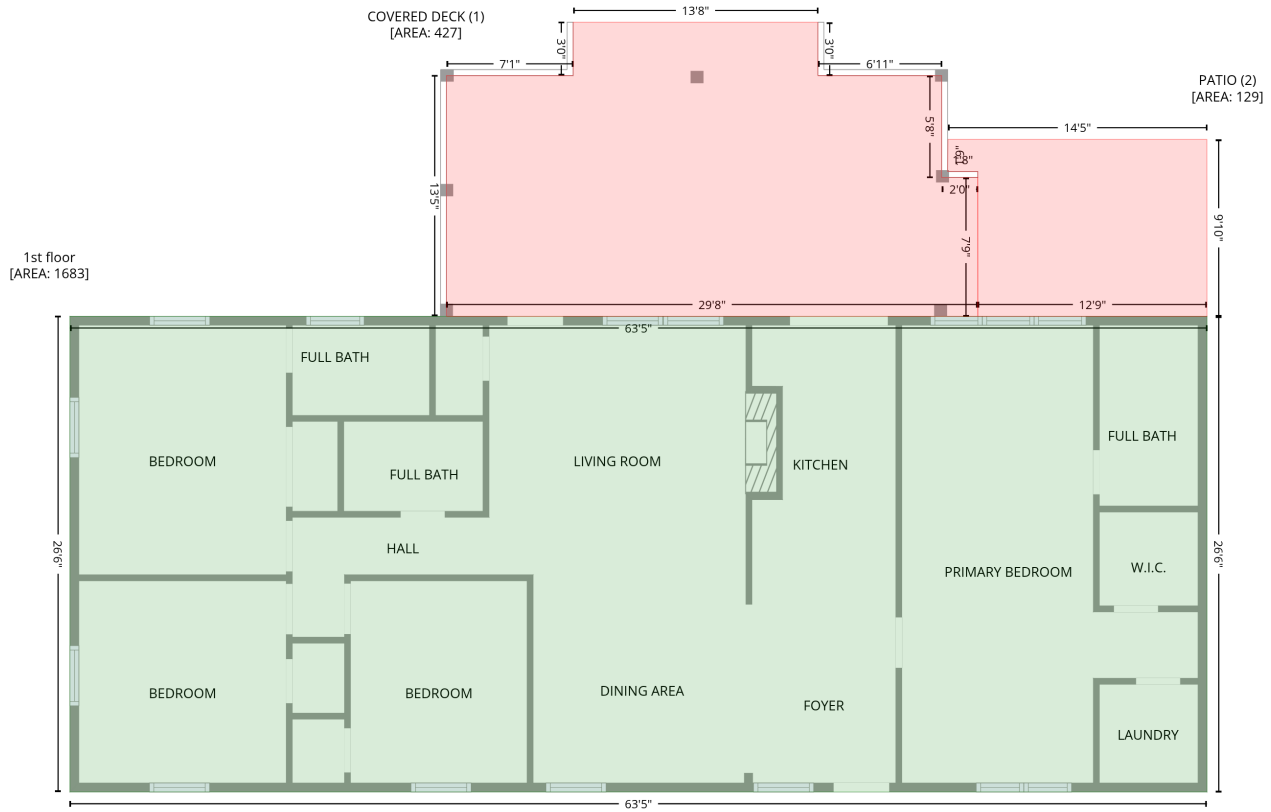


# 254 Lonsdale Dr, Littleton, NC, US

Gross Living Area: 1683 sq. ft

## Level 1



Space	Area (sq. ft)	Calculation <small>Coordinate Polygon Area Algorithm using inches</small>
1st floor (Living area)	1683	$-\left((627.4 + 627.4) * (301.8 - 620.3) + (627.4 + -133.9) * (620.3 - 620.3) + (-133.9 + -133.9) * (620.3 - 301.8) + (-133.9 + 627.4) * (301.8 - 301.8)\right) * 0.5 * 0.00694$
COVERED DECK (Non-living area)	427	$-\left((366.9 + 366.9) * (105 - 140.7) + (366.9 + 449.7) * (140.7 - 140.7) + (449.7 + 449.7) * (140.7 - 208.9) + (449.7 + 473.9) * (208.9 - 208.9) + (473.9 + 473.9) * (208.9 - 301.8) + (473.9 + 118.2) * (301.8 - 301.8) + (118.2 + 118.2) * (301.8 - 140.7) + (118.2 + 203) * (140.7 - 140.7) + (203 + 203) * (140.7 - 105) + (203 + 366.9) * (105 - 105)\right) * 0.5 * 0.00694$
PATIO (Non-living area)	129	$-\left((627.3 + 627.4) * (183.5 - 301.8) + (627.4 + 474.1) * (301.8 - 301.8) + (474.1 + 473.9) * (301.8 - 204.9) + (473.9 + 453.7) * (204.9 - 204.9) + (453.7 + 453.9) * (204.9 - 183.5) + (453.9 + 627.3) * (183.5 - 183.5)\right) * 0.5 * 0.00694$